

# Operation and maintenance manual for **Low Headroom Trolley Hoist LHT**

Installation - Operation - Maintenance



## **IMPORTANT - READ BEFORE USE!**

PLANETA-Hebetechnik GmbH • Resser Str. 17 & 23 • D-44653 Herne  
Tel. +49 2325 9580-0 • Fax +49 2325 77077 • [info@planeta-herne.de](mailto:info@planeta-herne.de) • [www.planeta-hebetechnik.de](http://www.planeta-hebetechnik.de)

© Reprint, also in extracts, only with written permission of PLANETA-Hebetechnik GmbH  
01-06-01-0000-0315-00-BA-EN-PLA



## **Index**

## **Page**














1. General safety	4
2. Introduction	5
3. Important instructions	6
4. Special safety	6
5. Mounting hints before use	7
6. Operation	7
7. Maintenance and Checking of Chain Hoist	7
8. Overload protection device	8
9. Technical data	9
10. Spare parts drawing for chain hoist PLS-PREMIUM 0.5 t - 5 t in LHT	11
11. Spare parts list for chain hoist PLS-PREMIUM 0.5 t - 5 t in LHT	12
12. Spare parts drawing for chain hoist PLS-PREMIUM (7.5)10 t - 15 t in LHT	18
13. Spare parts list for chain hoist PLS- PREMIUM (7.5)10 t - 15 t in LHT	19
14. Spare parts drawing for chain hoist PLS-PREMIUM 20 t in LHT	21
15. Spare parts list for chain hoist PLS-PREMIUM 20 t in LHT	22
16. Description of trolleys	23
17. Safety instructions	23
18. Special hints for trolley types LHT	23
19. Maintenance and Checking of LHT	24
20. Spare parts drawing for push trolley LHT-H	24
21. Spare parts list for push trolley LHT-H	25
22. Spare parts drawing for geared trolley LHT-G	30
23. Spare parts list for geared trolley LHT-G	31

Annual UVV-Inspections

CE-Declaration of Conformity

Notes

# 1. General Safety

				
<p>1. Read before use!</p>	<p>2. Do not overload</p>	<p>3. Do not work under a load!</p>	<p>4. Never pull the chain from the side!</p>	<p>5. Never work with a damaged hoist!</p>
				
<p>6. Never lift human with this hoist!</p>	<p>7. Never throw the hoist</p>	<p>8. Do not wrap the load chain around the load</p>	<p>9. Never work up to the end of chain</p>	<p>10. Never attach the load on the tip of the hook!</p>
				
<p>11. Never work with a twisted or broken chain!</p>	<p>12. Never work without a safety latch!</p>	<p>13. Never remove the warning notice</p>		

## **2. Introduction**

Chain hoists are only to be used for lifting and lowering of material, also when top hooked or incorporated in combination with a trolley. The Low Headroom Trolley Hoists LHT-H & LHT-G are built as an inseparable combination out of trolley type L87 and a manual chain hoists PREMIUM-PRO. This makes a CRANE!

### **Intellectual property**

Hoist models, drawings and engineering are of our exclusive property. It is expressly forbidden to copy, use or hand over to third parties such information without a specific written permission.

### **Warranty**

PLANETA warrants to the original user its hoists to be free of defects in material and workmanship for a period of one year from the date of purchase. PLANETA will repair, without cost, any product found to be defective, including parts and labor charges, or at its option, will replace such products or refund the purchase price less a reasonable allowance for depreciation, in exchange for the product.

If any product proves defective within its original one year warranty period, it should be returned to any authorized PLANETA dealer, transportation prepaid with proof of purchase or hoist data sheet / test certificate.

This warranty does not apply to products which PLANETA has determined to have been misused or abused, improperly maintained by the purchaser; or where the malfunction or defect can be attributed to the use of no genuine PLANETA parts. PLANETA makes no other warranty, and all implied warranties including any warranty of merchantability or fitness for a particular purpose are limited to the duration of the expressed warranty period as set forth above. PLANETA's maximum liability is limited to the purchase price of the product and in no event shall PLANETA be liable for any consequential, indirect, incidental, or special damages of any nature arising from the sale or use of the product, whether based on contract, tort, or otherwise.

### **3. Important instructions**

- Read instruction and make it available to operators on the device before using it.
- Operator must be instructed properly with the device. Never leave the device under load unattended!
- Never exceed carrying capacity indicated on the name plate. Do not draw any pull and lifting ropes or chains respectively over angles.
- Do not transport persons or loads with the product over areas below which persons could be staying.
- Device must be checked once a year by a technical expert, in case of harder operating conditions more often. Ask your retailer or PLANETA. The enterpriser is liable in case of damages and has to provide test certificates.
- Check the device regarding damages, unfastened screws or twists before using it and eliminate failures.
- Repair works on PLANETA hoisting devices shall only be carried out by the manufacturer or an instructed repair shop respectively by using PLANETA spare parts.
- Check load carrying constructions, load securing devices, mountings, cross beams etc. regarding load carrying capacity and condition of the required loads by a technical expert.
- Non-observance of the instruction, improper use, and corrosion by insufficient protection or product alterations without authority result in the expiry of the warranty.
- Risk of corrosion in case of continuous contact with unfavorable atmospheric conditions as for example high humidity or harmful environmental influences as for example atmospheres with acid vapours, corrosive gases or high dust concentration cause early wear. This effectuates no claim under warranty.
- Further information or spare part lists will kindly be provided by us or your specialist dealer.

### **4. Special safety**

- Read before use.
- Do not overload
- Do not work under a load
- Never pull the chain from the side
- Never work with a damaged hoist
- Never lift persons with this hoist
- Never throw the hoist
- Do not wrap the load chain around the load
- Never work up to the end of chain
- Never attach the load on the tip of the hook.
- Never work with a twisted or broken chain
- Never work without a safety latch
- Never remove the warning notice

## 5. Mounting hints before use

### A. Before initiation

In the Federal Republic of Germany there are following important: The BGV D8, D6, BGR 258, BGR A1 and "BetrSichV", The German Law For Equipment And Production (GPSG), The Ordinance On Industrial Safety And Health and The Directive 2006/42/EC Of The European Parliament And Of The Council 2006/42/EG (EG Machinery Directive). Before the first initiation a quality inspection by a technical expert for cranes has to be carried out. Please contact PLANETA for it. We will kindly advise you! Please look to your health and safety rules of your country as well.

Never apply the chain hoist or crane under -20 degree and above +60 degree Celsius.

### B. Installation and testing prior to each use

- Hand chain and load chain must hang free and be without breaks or twists.
- PLS chain block: Pull through hand chain one time completely load-free.
- Inspection of load brake: Lift up lightly the load and hold it. If load is safe, go on lifting. When lowering, the load shall not slide after hand chain.
- If everything is performed properly, operation can be started.
- Important for devices of multiple lines: Lower block shall not be snapped through the chain loop. This can be recognised by a twisted chain. Each second chain link is in one row not steadily in alignment. If the welded seams of the chain links are not in same direction the lower block must be struck back through the chain loop.
- The last chain link must be fastened on the cabinet.

## 6. Operation

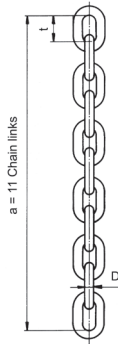
- Brake closes independently when hanging on the minimal load (approx. 10% of nominal load).
- Chain block is only suitable for vertical lifting and lowering.
- To move the load the hand chain is pulled up or down respectively.

## 7. Maintenance and inspection

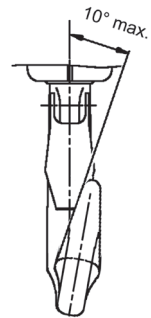
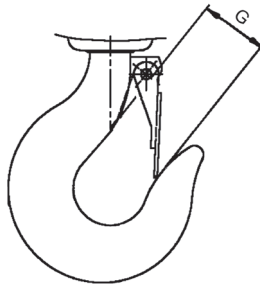
### Chains and Hooks

- The chains and clamps have to be inspected continuously! Clean chain before inspection. Lubricate load chain from time to time! Never lubricate or grease the brake!
- Retracted chain shall not click under load.
- Check chain for tension! The internal length (**t**) of a worn chain link, smallest diameter of wire (**D**) and length of 11 chain links (**a**) are measured by a slide gauge where the chain must be tightened firmly.
- Dimensions: If the deviations of measurement exceed the values (**a**) in the following table substitute chain immediately. Measure of diameter (**D**) shall not be under-run and the pitch (**t**) of the single link not be exceeded.

Capacity	Max. measurement of		Min. chain link diameter (D)
	1 chain link (t)	11 chain links (a)	
0,25t	12,6mm	134,9mm	3,6mm
0,5t	15,8mm	170,0mm	4,5mm
1t	20mm	215,2mm	5,7mm
1,5t	22,1mm	237,9mm	6,4mm
2t	25,2mm	271,9mm	7,2mm
3t, 5t & 10t	29,4mm	317,2mm	9,0mm
15t & 20t	29,4mm	317,2mm	9,0mm

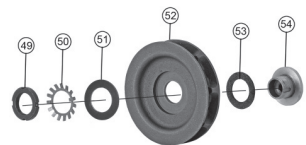
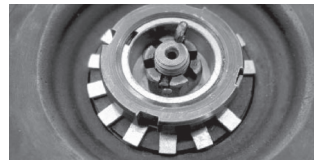


Capacity	Clamp mouth opening "G" normal – max.
0,25t	25 – 28mm
0,5t	26 – 29mm
1t	30 – 33mm
1,5t	36 – 40mm
2t	38 – 42mm
3t	45 – 50mm
5t	51 – 56mm
10t	54,9 – 60,9mm
15t	95 – 101mm



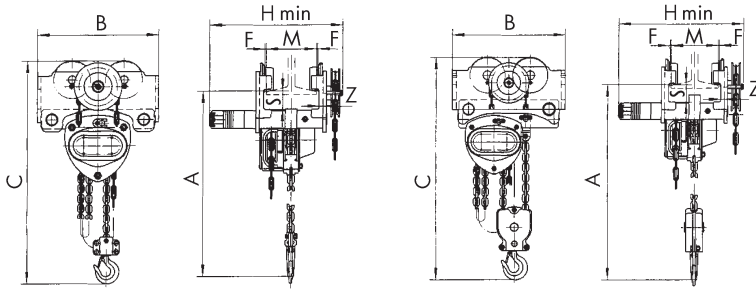
## 8. Overload safety device

All spur gear chain hoists PLS PREMIUM-PRO have a standard adjustable overload safety device. This protects the hoist by prohibiting lifting more than the preset friction connection in the hand wheel permits. The factory made settings restrict the overload safety device to approx. 125 % nominal load. By fastening or loosening the press nut Itm. 76, the pressure on the friction disc is increased or lowered. If the desired value is reached, the nut Itm. 76 is secured by bending one or two teeth of the tooth wheel Itm. 28-5 into the corresponding gap in the nut.





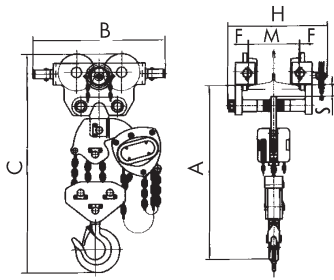
## 9. Specifications



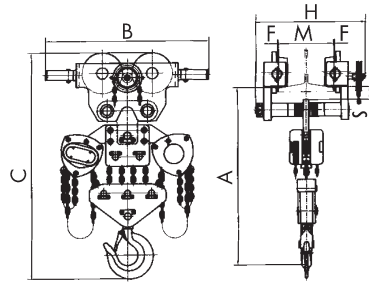
**0,5 - 3 t**

**5 t**

TYPE	LHT...-H/-G	005L	010L	015L	020L	030L
Capacity	t	0.5	1	1.5	2	3
Standard lift	m	3	3	3	3	3
Number of chain falls		1	1	1	1	1
Chain size	mm	5 x 15	6.3 x 19	8 x 24	8 x 24	10 x 28
Min. headroom (A)	mm	299	331	424	424	486
Flange width M min.-max. (M)	mm	50 - 152	64 - 203	88 - 203	88 - 203	100 - 203
Min. curve radius	m	0.85	1	1.1	1.1	1.3
Dimension H min. LHT-H	mm	236	303	317	317	333
Dimension H min. LHT-G	mm	272	334	343	343	356
B	mm	258	292	358	358	434
C	mm	385	451	551	551	633
S	mm	30	37	38	38	40
Z	mm	7.5	10.5	12	12	14
H	mm	3	3	3	3	3
Weight with 3 m lift LHT-H	kg	15	24	46	46	61
Weight with 3 m lift LHT-G	kg	19	28	44	44	65



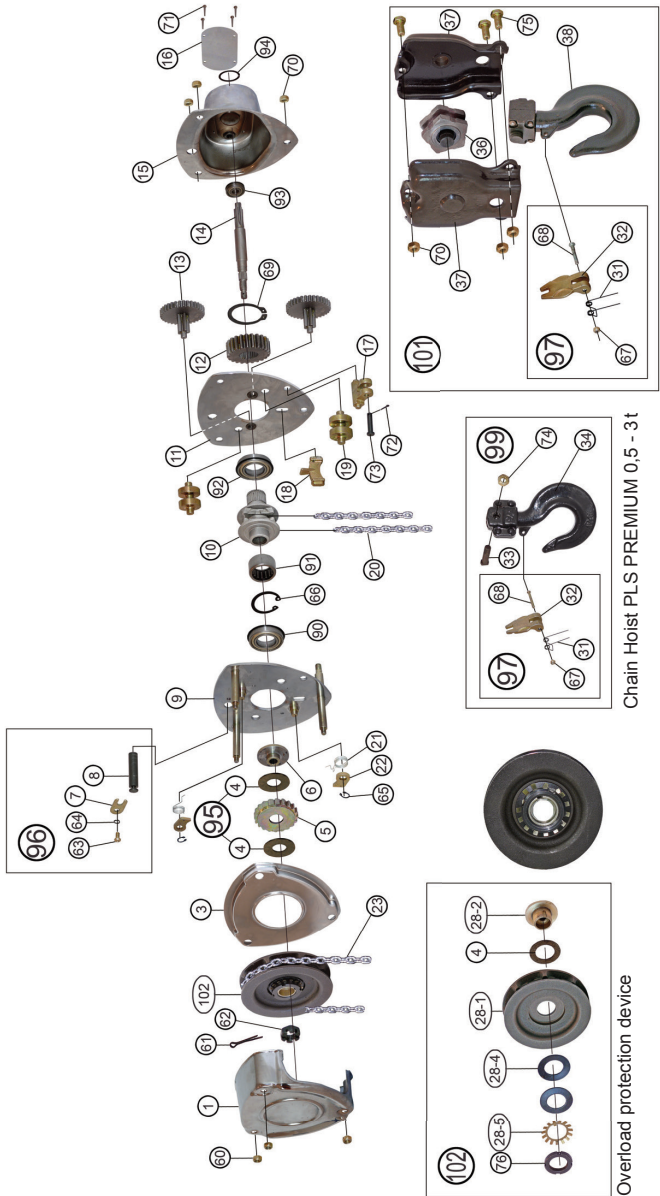
**10 t**



**15 t**

TYPE	LHT...-H/-G	050L	075L	100L	150L	200L
Capacity	t	5	7.5	10	15	20
Standard lift	m	3	3	3	3	3
Number of chain falls		2	3	4	6	8
Chain size	mm	9 x 27	9 x 27	9 x 27	9 x 27	9 x 27
Min. headroom (A)	mm	636	760	780	930	965
Flange width M min.-max. (M)	mm	114 - 203	124 - 203	124 - 203	136 - 203	136 - 203
Min. curve radius	m	1.4	2	2	3.5	3.5
Dimension H min. LHT-H	mm	355	372	378	449	449
Dimension H min. LHT-G	mm	373	416	423	498	498
B	mm	448	628	636	757	891
C	mm	808	965	990	1130	1165
S	mm	42	45	45	56	58
Z	mm	15	16	17	20	25
H	mm	3	3	3	3	3
Weight with 3 m lift LHT-H	kg	86	130	147	278	331
Weight with 3 m lift LHT-G	kg	91	135	153	286	353

# 10. Spare parts for Chain Hoist PLS-PREMIUM 0,5t - 5 t in LHT



Chain Hoist PLS PREMIUM 5t

Chain Hoist PLS PREMIUM 0,5 - 3t

Overload protection device

## 11. Spare Parts List for Chain Hoist PLS-PREMIUM 0,5t - 5t in LHT

### Component parts PLS-PREMIUM 0,5t

Item	Qty.	Description	Part-No.	
1	1	Hand wheel cover	PLS.P050.001	Piece
3	1	Brake cover	PLS.P050.003	Piece
5	1	Ratchet disc	PLS.P050.005	Piece
6	1	Brake seat	PLS.P050.006	Piece
9	1	Left side plate	PLS.P050.009	Piece
10	1	Load chain sprocket	PLS.P050.010	Piece
11	1	Right side plate	PLS.P050.011	Piece
12	1	Spline gaer	PLS.P050.012	Piece
13	2	Disc gear	PLS.P050.013	Piece
14	1	Teeth shaft	PLS.P050.014	Piece
15	1	Outer side plate	PLS.P050.015	Piece
16	1	Nameplate	PLS.P050.016	Piece
17	1	End anchor	PLS.P050.017	Piece
18	1	Chain stripper	PLS.P050.018	Piece
19	2	Guide roller	PLS.P050.019	Piece
20	3	Load chain	5 x 15-8verz	m
21	2	Pawl spring	PLS.P050.021	Piece
22	2	Pawl	PLS.P050.022	Piece
23	5	Hand chain	HNK 5 x 24verz	m
60	3	Locking nut	PLS.P050.060	Piece
61	1	Split pin	PLS.P050.061	Piece
62	1	Nut	PLS.P050.062	Piece
65	2	Spring washer	PLS.P050.065	Piece
66	1	Spring washer	PLS.P050.066	Piece
69	1	Spring washer	PLS.P050.069	Piece
70	3	Locking nut	PLS.P050.070	Piece
71	4	Nameplate rivet	PLS.P050.071	Piece
72	1	Split pin	PLS.P050.072	Piece
73	1	Shaft	PLS.P050.073	Piece
90	1	Left bearing	PLS.P050.090	Piece
91	1	Rolling bearing	PLS.P050.091	Piece
92	1	Right bearing	PLS.P050.092	Piece
93	1	Bearing	PLS.P050.093	Piece
94	1	Snap ring	PLS.P050.094	Piece

**Non-listed items are available only in the Assembly!**

### Complete parts PLS-PREMIUM 0,5t

Item	Qty.	Description	Part-No.	
95	1	Friction disk assembly, Item 4 (2 x)	PLS.P050.095	Set
96	1	Top suspension, Item 7, 8, 63, 64	PLS.P050.096	Set
97	1	Safety latch assembly, Item 31, 32, 67, 68	PLS.P050.097	Set
99	1	Bottom hook assembly, Item 33, 34, 74, 97	PLS.P050.099	Set
102	1	Overload protection, Item 4, 28-1, 28-2, 28-4 (2x), 28-5, 76	PLS.P050.102	Set

## Component parts PLS-PREMIUM 1 t

Item	Qty.	Description	Part-No.	
1	1	Hand wheel cover	PLS.P100.001	Piece
3	1	Brake cover	PLS.P100.003	Piece
5	1	Ratchet disc	PLS.P100.005	Piece
6	1	Brake seat	PLS.P100.006	Piece
9	1	Left side plate	PLS.P100.009	Piece
10	1	Load chain sprocket	PLS.P100.010	Piece
11	1	Right side plate	PLS.P100.011	Piece
12	1	Spline gaer	PLS.P100.012	Piece
13	2	Disc gear	PLS.P100.013	Piece
14	1	Teeth shaft	PLS.P100.014	Piece
15	1	Outer side plate	PLS.P100.015	Piece
16	1	Nameplate	PLS.P100.016	Piece
17	1	End anchor	PLS.P100.017	Piece
18	1	Chain stripper	PLS.P100.018	Piece
19	2	Guide roller	PLS.P100.019	Piece
20	3	Load chain	6,3 x 19-8verz	m
21	2	Pawl spring	PLS.P100.021	Piece
22	2	Pawl	PLS.P100.022	Piece
23	5	Hand chain	HNK 5 x 24verz	m
60	3	Locking nut	PLS.P100.060	Piece
61	1	Split pin	PLS.P100.061	Piece
62	1	Nut	PLS.P100.062	Piece
65	2	Spring washer	PLS.P100.065	Piece
66	1	Spring washer	PLS.P100.066	Piece
69	1	Spring washer	PLS.P100.069	Piece
70	3	Locking nut	PLS.P100.070	Piece
71	4	Nameplate rivet	PLS.P100.071	Piece
72	1	Split pin	PLS.P100.072	Piece
73	1	Shaft	PLS.P100.073	Piece
90	1	Left bearing	PLS.P100.090	Piece
91	1	Rolling bearing	PLS.P100.091	Piece
92	1	Right bearing	PLS.P100.092	Piece
93	1	Bearing	PLS.P100.093	Piece
94	1	Snap ring	PLS.P100.094	Piece

**Non-listed items are available only in the Assembly!**

## Complete parts PLS-PREMIUM 1 t

Item	Qty.	Description	Part-No.	
95	1	Friction disk assembly, Item 4 (2 x)	PLS.P100.095	Set
96	1	Top suspension, Item 7, 8, 63, 64	PLS.P100.096	Set
97	1	Safety latch assembly, Item 31, 32, 67, 68	PLS.P100.097	Set
99	1	Bottom hook assembly, Item 33, 34, 74, 97	PLS.P100.099	Set
102	1	Overload protection, Item 4, 28-1, 28-2, 28-4 (2x), 28-5, 76	PLS.P100.102	Set

## Component parts PLS-PREMIUM 1,5t

Item	Qty.	Description	Part-No.	
1	1	Hand wheel cover	PLS.P150.001	Piece
3	1	Brake cover	PLS.P150.003	Piece
5	1	Ratchet disc	PLS.P150.005	Piece
6	1	Brake seat	PLS.P150.006	Piece
9	1	Left side plate	PLS.P150.009	Piece
10	1	Load chain sprocket	PLS.P150.010	Piece
11	1	Right side plate	PLS.P150.011	Piece
12	1	Spline gaer	PLS.P150.012	Piece
13	2	Disc gear	PLS.P150.013	Piece
14	1	Teeth shaft	PLS.P150.014	Piece
15	1	Outer side plate	PLS.P150.015	Piece
16	1	Nameplate	PLS.P150.016	Piece
17	1	End anchor	PLS.P150.017	Piece
18	1	Chain stripper	PLS.P150.018	Piece
19	2	Guide roller	PLS.P150.019	Piece
20	3	Load chain	7,1 x 21-8verz	m
21	2	Pawl spring	PLS.P150.021	Piece
22	2	Pawl	PLS.P150.022	Piece
23	5	Hand chain	HNK 5 x 24verz	m
60	3	Locking nut	PLS.P150.060	Piece
61	1	Split pin	PLS.P150.061	Piece
62	1	Nut	PLS.P150.062	Piece
65	2	Spring washer	PLS.P150.065	Piece
66	1	Spring washer	PLS.P150.066	Piece
69	1	Spring washer	PLS.P150.069	Piece
70	3	Locking nut	PLS.P150.070	Piece
71	4	Nameplate rivet	PLS.P150.071	Piece
72	1	Split pin	PLS.P150.072	Piece
73	1	Shaft	PLS.P150.073	Piece
90	1	Left bearing	PLS.P150.090	Piece
91	1	Rolling bearing	PLS.P150.091	Piece
92	1	Right bearing	PLS.P150.092	Piece
93	1	Bearing	PLS.P150.093	Piece
94	1	Snap ring	PLS.P150.094	Piece

**Non-listed items are available only in the Assembly!**

## Complete parts PLS-PREMIUM 1,5t

Item	Qty.	Description	Part-No.	
95	1	Friction disk assembly, Item 4 (2 x)	PLS.P150.095	Set
96	1	Top suspension, Item 7, 8, 63, 64	PLS.P150.096	Set
97	1	Safety latch assembly, Item 31, 32, 67, 68	PLS.P150.097	Set
99	1	Bottom hook assembly, Item 33, 34, 74, 97	PLS.P150.099	Set
102	1	Overload protection, Item 4, 28-1, 28-2, 28-4 (2x), 28-5, 76	PLS.P150.102	Set

## Component parts PLS-PREMIUM 2t

Item	Qty.	Description	Part-No.	
1	1	Hand wheel cover	PLS.P200.001	Piece
3	1	Brake cover	PLS.P200.003	Piece
5	1	Ratchet disc	PLS.P200.005	Piece
6	1	Brake seat	PLS.P200.006	Piece
9	1	Left side plate	PLS.P200.009	Piece
10	1	Load chain sprocket	PLS.P200.010	Piece
11	1	Right side plate	PLS.P200.011	Piece
12	1	Spline gaer	PLS.P200.012	Piece
13	2	Disc gear	PLS.P200.013	Piece
14	1	Teeth shaft	PLS.P200.014	Piece
15	1	Outer side plate	PLS.P200.015	Piece
16	1	Nameplate	PLS.P200.016	Piece
17	1	End anchor	PLS.P200.017	Piece
18	1	Chain stripper	PLS.P200.018	Piece
19	2	Guide roller	PLS.P200.019	Piece
20	3	Load chain	8 x 24-8verz	m
21	2	Pawl spring	PLS.P200.021	Piece
22	2	Pawl	PLS.P200.022	Piece
23	5	Hand chain	HNK 5 x 24verz	m
60	3	Locking nut	PLS.P200.060	Piece
61	1	Split pin	PLS.P200.061	Piece
62	1	Nut	PLS.P200.062	Piece
65	2	Spring washer	PLS.P200.065	Piece
66	1	Spring washer	PLS.P200.066	Piece
69	1	Spring washer	PLS.P200.069	Piece
70	3	Locking nut	PLS.P200.070	Piece
71	4	Nameplate rivet	PLS.P200.071	Piece
72	1	Split pin	PLS.P200.072	Piece
73	1	Shaft	PLS.P200.073	Piece
90	1	Left bearing	PLS.P200.090	Piece
91	1	Rolling bearing	PLS.P200.091	Piece
92	1	Right bearing	PLS.P200.092	Piece
93	1	Bearing	PLS.P200.093	Piece
94	1	Snap ring	PLS.P200.094	Piece

**Non-listed items are available only in the Assembly!**

## Complete parts PLS-PREMIUM 2t

Item	Qty.	Description	Part-No.	
95	1	Friction disk assembly, Item 4 (2 x)	PLS.P200.095	Set
96	1	Top suspension, Item 7, 8, 63, 64	PLS.P200.096	Set
97	1	Safety latch assembly, Item 31, 32, 67, 68	PLS.P200.097	Set
99	1	Bottom hook assembly, Item 33, 34, 74, 97	PLS.P200.099	Set
102	1	Overload protection, Item 4, 28-1, 28-2, 28-4 (2x), 28-5, 76	PLS.P200.102	Set

## Component parts PLS-PREMIUM 3t

Item	Qty.	Description	Part-No.	
1	1	Hand wheel cover	PLS.P300.001	Piece
3	1	Brake cover	PLS.P300.003	Piece
5	1	Ratchet disc	PLS.P300.005	Piece
6	1	Brake seat	PLS.P300.006	Piece
9	1	Left side plate	PLS.P300.009	Piece
10	1	Load chain sprocket	PLS.P300.010	Piece
11	1	Right side plate	PLS.P300.011	Piece
12	1	Spline gaer	PLS.P300.012	Piece
13	2	Disc gear	PLS.P300.013	Piece
14	1	Teeth shaft	PLS.P300.014	Piece
15	1	Outer side plate	PLS.P300.015	Piece
16	1	Nameplate	PLS.P300.016	Piece
17	1	End anchor	PLS.P300.017	Piece
18	1	Chain stripper	PLS.P300.018	Piece
19	2	Guide roller	PLS.P300.019	Piece
20	3	Load chain	10 x 28-8verz	m
21	2	Pawl spring	PLS.P300.021	Piece
22	2	Pawl	PLS.P300.022	Piece
23	5	Hand chain	HNK 5 x 24verz	m
60	3	Locking nut	PLS.P300.060	Piece
61	1	Split pin	PLS.P300.061	Piece
62	1	Nut	PLS.P300.062	Piece
65	2	Spring washer	PLS.P300.065	Piece
66	1	Spring washer	PLS.P300.066	Piece
69	1	Spring washer	PLS.P300.069	Piece
70	3	Locking nut	PLS.P300.070	Piece
71	4	Nameplate rivet	PLS.P300.071	Piece
72	1	Split pin	PLS.P300.072	Piece
73	1	Shaft	PLS.P300.073	Piece
90	1	Left bearing	PLS.P300.090	Piece
91	1	Rolling bearing	PLS.P300.091	Piece
92	1	Right bearing	PLS.P300.092	Piece
93	1	Bearing	PLS.P300.093	Piece
94	1	Snap ring	PLS.P300.094	Piece

**Non-listed items are available only in the Assembly!**

## Complete parts PLS-PREMIUM 3t

Item	Qty.	Description	Part-No.	
95	1	Friction disk assembly, Item 4 (2 x)	PLS.P300.095	Set
96	1	Top suspension, Item 7, 8, 63, 64	PLS.P300.096	Set
97	1	Safety latch assembly, Item 31, 32, 67, 68	PLS.P300.097	Set
99	1	Bottom hook assembly, Item 33, 34, 74, 97	PLS.P300.099	Set
102	1	Overload protection, Item 4, 28-1, 28-2, 28-4 (2x), 28-5, 76	PLS.P300.102	Set



## Component parts PLS-PREMIUM 5t

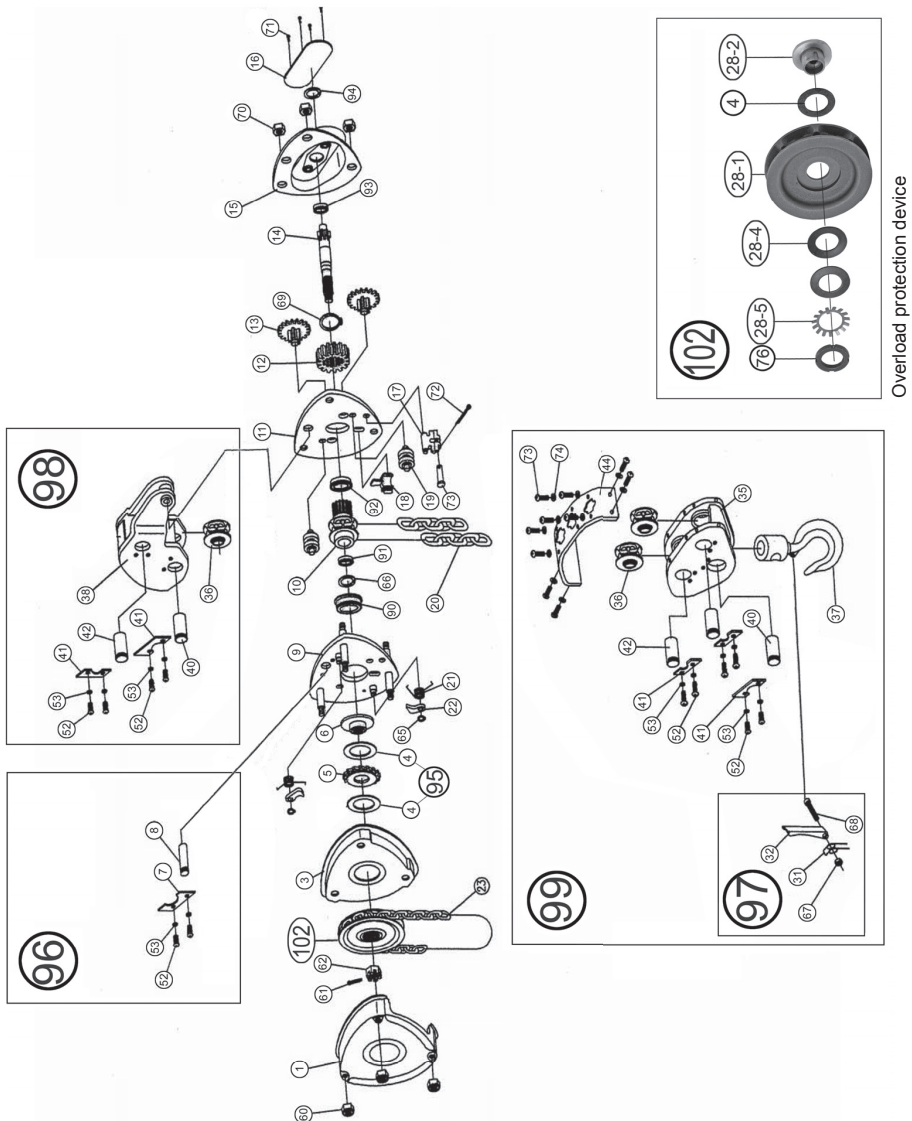
Item	Qty.	Description	Part-No.	
1	1	Hand wheel cover	PLS.P500.001	Piece
3	1	Brake cover	PLS.P500.003	Piece
5	1	Ratchet disc	PLS.P500.005	Piece
6	1	Brake seat	PLS.P500.006	Piece
9	1	Left side plate	PLS.P500.009	Piece
10	1	Load chain sprocket	PLS.P500.010	Piece
11	1	Right side plate	PLS.P500.011	Piece
12	1	Spline gaer	PLS.P500.012	Piece
13	2	Disc gear	PLS.P500.013	Piece
14	1	Teeth shaft	PLS.P500.014	Piece
15	1	Outer side plate	PLS.P500.015	Piece
16	1	Nameplate	PLS.P500.016	Piece
17	1	End anchor	PLS.P500.017	Piece
18	1	Chain stripper	PLS.P500.018	Piece
19	2	Guide roller	PLS.P500.019	Piece
20	6	Load chain	9 x 27-8verz	m
21	2	Pawl spring	PLS.P500.021	Piece
22	2	Pawl	PLS.P500.022	Piece
23	5	Hand chain	HNK 5 x 24verz	m
60	3	Locking nut	PLS.P500.060	Piece
61	1	Split pin	PLS.P500.061	Piece
62	1	Nut	PLS.P500.062	Piece
65	2	Spring washer	PLS.P500.065	Piece
66	1	Spring washer	PLS.P500.066	Piece
69	1	Spring washer	PLS.P500.069	Piece
70	3	Locking nut	PLS.P500.070	Piece
71	4	Nameplate rivet	PLS.P500.071	Piece
72	1	Split pin	PLS.P500.072	Piece
73	1	Shaft	PLS.P500.073	Piece
90	1	Left bearing	PLS.P500.090	Piece
91	1	Rolling bearing	PLS.P500.091	Piece
92	1	Right bearing	PLS.P500.092	Piece
93	1	Bearing	PLS.P500.093	Piece
94	1	Snap ring	PLS.P500.094	Piece

**Non-listed items are available only in the Assembly!**

## Complete parts PLS-PREMIUM 5t

Item	Qty.	Description	Part-No.	
95	1	Friction disk assembly, Item 4 (2 x)	PLS.P500.095	Set
96	1	Top suspension, Item 7, 8, 63, 64	PLS.P500.096	Set
97	1	Safety latch assembly, Item 31, 32, 67, 68	PLS.P500.097	Set
99	1	Bottom hook assembly, Item 33, 34, 74, 97	PLS.P500.099	Set
102	1	Overload protection, Item 4, 28-1, 28-2, 28-4 (2x), 28-5, 76	PLS.P500.102	Set

## 12. Spare parts drawing for chain hoist PLS-PREMIUM (7.5) 10 t - 15 t in LHT



Special version of 7.5 t is similar, but only with 3 chain falls

### 13. Spare parts list for chain hoist PLS- PREMIUM (7.5) 10 t - 15 t in LHT

#### Component parts PLS-PREMIUM 10t

Item	Qty.	Description	Part-No.	
1	1	Hand wheel cover	PLS.P1000.001	Piece
3	1	Brake cover	PLS.P1000.003	Piece
5	1	Ratchet disc	PLS.P1000.005	Piece
6	1	Brake seat	PLS.P1000.006	Piece
9	1	Left side plate	PLS.P1000.009	Piece
10	1	Load chain sprocket	PLS.P1000.010	Piece
11	1	Right side plate	PLS.P1000.011	Piece
12	1	Spline gaer	PLS.P1000.012	Piece
13	2	Disc gear	PLS.P1000.013	Piece
14	1	Teeth shaft	PLS.P1000.014	Piece
15	1	Outer side plate	PLS.P1000.015	Piece
16	1	Nameplate	PLS.P1000.016	Piece
17	1	End anchor	PLS.P1000.017	Piece
18	1	Chain stripper	PLS.P1000.018	Piece
19	2	Guide roller	PLS.P1000.019	Piece
20	12	Load chain	9 x 27-8verz	m
21	2	Pawl spring	PLS.P1000.021	Piece
22	2	Pawl	PLS.P1000.022	Piece
23	5	Hand chain	HNK 5 x 24verz	m
60	3	Locking nut	PLS.P1000.060	Piece
61	1	Split pin	PLS.P1000.061	Piece
62	1	Nut	PLS.P1000.062	Piece
65	2	Spring washer	PLS.P1000.065	Piece
66	1	Spring washer	PLS.P1000.066	Piece
69	1	Spring washer	PLS.P1000.069	Piece
70	3	Locking nut	PLS.P1000.070	Piece
71	4	Nameplate rivet	PLS.P1000.071	Piece
72	1	Split pin	PLS.P1000.072	Piece
73	1	Shaft	PLS.P1000.073	Piece
90	1	Left bearing	PLS.P1000.090	Piece
91	1	Rolling bearing	PLS.P1000.091	Piece
92	1	Right bearing	PLS.P1000.092	Piece
93	1	Bearing	PLS.P1000.093	Piece
94	1	Snap ring	PLS.P1000.094	Piece

**Non-listed items are available only in the Assembly!**

#### Complete parts PLS-PREMIUM 10t

Item	Qty.	Description	Part-No.	
95	1	Friction disk assembly, Item 4 (2 x)	PLS.P1000.095	Set
96	1	Top suspension, Item 7, 8, 63, 64	PLS.P1000.096	Set
97	1	Safety latch assembly, Item 31, 32, 67, 68	PLS.P1000.097	Set
98	1	Top assembly Item 36, 38, 40, 41 (2x), 42, 52 (4x), 53 (4x)	PLS.P1000.098	Set
99	1	Bottom hook assembly, Item 33, 34, 74, 97	PLS.P1000.099	Set
102	1	Overload protection, Item 4, 28-1, 28-2, 28-4 (2x), 28-5, 76	PLS.P1000.102	Set

## Component parts PLS-PREMIUM 15t

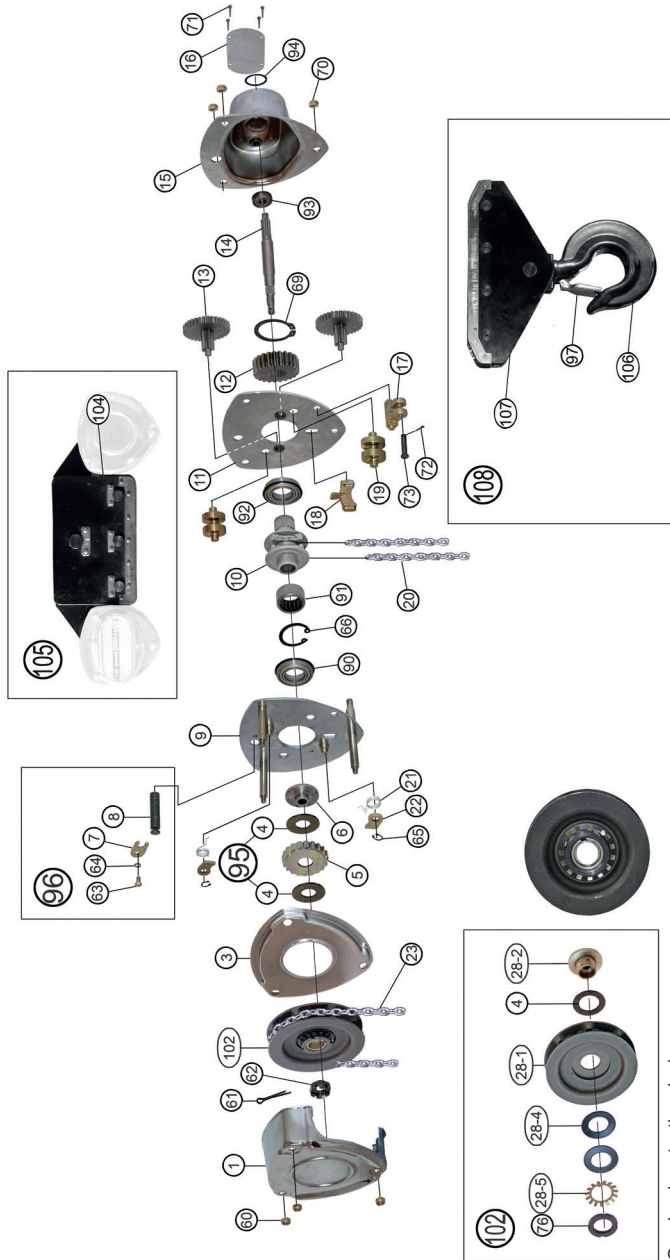
Item	Qty.	Description	Part-No.	
1	1	Hand wheel cover	PLS.P1500.001	Piece
3	1	Brake cover	PLS.P1500.003	Piece
5	1	Ratchet disc	PLS.P1500.005	Piece
6	1	Brake seat	PLS.P1500.006	Piece
9	1	Left side plate	PLS.P1500.009	Piece
10	1	Load chain sprocket	PLS.P1500.010	Piece
11	1	Right side plate	PLS.P1500.011	Piece
12	1	Spline gaer	PLS.P1500.012	Piece
13	2	Disc gear	PLS.P1500.013	Piece
14	1	Teeth shaft	PLS.P1500.014	Piece
15	1	Outer side plate	PLS.P1500.015	Piece
16	1	Nameplate	PLS.P1500.016	Piece
17	1	End anchor	PLS.P1500.017	Piece
18	1	Chain stripper	PLS.P1500.018	Piece
19	2	Guide roller	PLS.P1500.019	Piece
20	12	Load chain	9 x 27-8verz	m
21	2	Pawl spring	PLS.P1500.021	Piece
22	2	Pawl	PLS.P1500.022	Piece
23	5	Hand chain	HNK 5 x 54verz	m
60	3	Locking nut	PLS.P1500.060	Piece
61	1	Split pin	PLS.P1500.061	Piece
62	1	Nut	PLS.P1500.062	Piece
65	2	Spring washer	PLS.P1500.065	Piece
66	1	Spring washer	PLS.P1500.066	Piece
69	1	Spring washer	PLS.P1500.069	Piece
70	3	Locking nut	PLS.P1500.070	Piece
71	4	Nameplate rivet	PLS.P1500.071	Piece
72	1	Split pin	PLS.P1500.072	Piece
73	1	Shaft	PLS.P1500.073	Piece
90	1	Left bearing	PLS.P1500.090	Piece
91	1	Rolling bearing	PLS.P1500.091	Piece
92	1	Right bearing	PLS.P1500.092	Piece
93	1	Bearing	PLS.P1500.093	Piece
94	1	Snap ring	PLS.P1500.094	Piece

**Non-listed items are available only in the Assembly!**

## Complete parts PLS-PREMIUM 15t

Item	Qty.	Description	Part-No.	
95	1	Friction disk assembly, Item 4 (2 x)	PLS.P1500.095	Set
96	1	Top suspension, Item 7, 8, 63, 64	PLS.P1500.096	Set
97	1	Safety latch assembly, Item 31, 32, 67, 68	PLS.P1500.097	Set
98	1	Top assembly Item 36, 38, 40, 41 (2x), 42, 52 (4x), 53 (4x)	PLS.P1500.098	Set
99	1	Bottom hook assembly, Item 33, 34, 74, 97	PLS.P1500.099	Set
102	1	Overload protection, Item 4, 28-1, 28-2, 28-4 (2x), 28-5, 76	PLS.P1500.102	Set

# 14. Spare parts drawing for chain hoist PLS-PREMIUM 20 t in LHT



Overload protection device

## 15. Spare parts list for chain hoist PLS-PREMIUM 20 t in LHT

### Component parts PLS-PREMIUM 20 t

Item	Qty.	Description	Part-No.	
1	1	Hand wheel cover	PLS.P2000.001	Piece
3	1	Brake cover	PLS.P2000.003	Piece
5	1	Ratchet disc	PLS.P2000.005	Piece
6	1	Brake seat	PLS.P2000.006	Piece
9	1	Left side plate	PLS.P2000.009	Piece
10	1	Load chain sprocket	PLS.P2000.010	Piece
11	1	Right side plate	PLS.P2000.011	Piece
12	1	Spline gaer	PLS.P2000.012	Piece
13	2	Disc gear	PLS.P2000.013	Piece
14	1	Teeth shaft	PLS.P2000.014	Piece
15	1	Outer side plate	PLS.P2000.015	Piece
16	1	Nameplate	PLS.P2000.016	Piece
17	1	End anchor	PLS.P2000.017	Piece
18	1	Chain stripper	PLS.P2000.018	Piece
19	2	Guide roller	PLS.P2000.019	Piece
20	12	Load chain	9 x 27-8verz	m
21	2	Pawl spring	PLS.P2000.021	Piece
22	2	Pawl	PLS.P2000.022	Piece
23	5	Hand chain	HNK 5 x 54verz	m
60	3	Locking nut	PLS.P2000.060	Piece
61	1	Split pin	PLS.P2000.061	Piece
62	1	Nut	PLS.P2000.062	Piece
65	2	Spring washer	PLS.P2000.065	Piece
66	1	Spring washer	PLS.P2000.066	Piece
69	1	Spring washer	PLS.P2000.069	Piece
70	3	Locking nut	PLS.P2000.070	Piece
71	4	Nameplate rivet	PLS.P2000.071	Piece
72	1	Split pin	PLS.P2000.072	Piece
73	1	Shaft	PLS.P2000.073	Piece
90	1	Left bearing	PLS.P2000.090	Piece
91	1	Rolling bearing	PLS.P2000.091	Piece
92	1	Right bearing	PLS.P2000.092	Piece
93	1	Bearing	PLS.P2000.093	Piece
94	1	Snap ring	PLS.P2000.094	Piece

**Non-listed items are available only in the Assembly!**

### Complete parts PLS-PREMIUM 20 t

Item	Qty.	Description	Part-No.	
95	1	Friction disk assembly, Item 4 (2 x)	PLS.P2000.095	Set
96	1	Top suspension, Item 7, 8, 63, 64	PLS.P2000.096	Set
97	1	Safety latch assembly, Item 31, 32, 67, 68	PLS.P2000.097	Set
102	1	Overload protection, Item 4, 28-1, 28-2, 28-4 (2x), 28-5, 76	PLS.P2000.102	Set
105	1	Top bottle assembly, Item 104	PLS.P2000.105	Set
108	1	Hook block assembly, Item 97, 106, 107	PLS.P2000.108	Set

## 16. Description of trolleys

- The PLANETA trolleys are deliverable from 500 kg to 20 t. They are intended to be used as cranes to run on I-beams or similar beams.
- The push travel trolley LHT-H comprises 2 side plates, where the wheels with bearings are fitted, two threaded carrying bolts with nuts, a hanger plate with suspension eye for the hoist, as well as spacers/ washers for the adjustable span.
- The gear travel trolley LHT-G has one side plate fitted with a hand chain-wheel, two geared wheels and a pinion for mechanical movement of the trolley, whilst all other parts are as for push trolley LHT-H.

## 17. Safety instructions

- Trolley shall be installed correctly; all nuts are tight and secured by a splint.
- The wheels have to be properly on the track and lay reliable on the beam surface.
- Remove welding seeds or hindrances from the beam runway.
- Protect the trolley from falling down by end stoppers at beam's ends.
- No side pull allowed. Lift and use only vertical!

## 18. Special hints for trolley types LHT

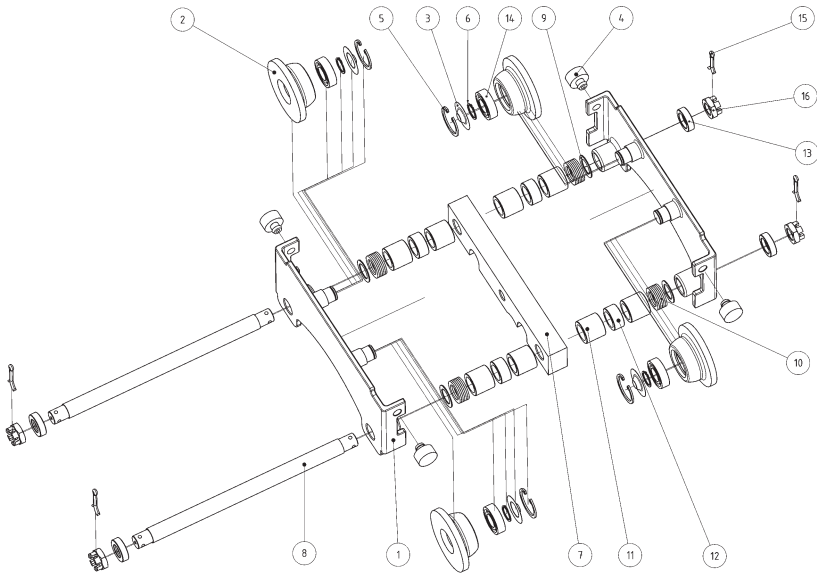
- Each trolley is tested in all functions before leaving the factory if it is delivered in an assembled state. The length of the hand chain is customised to the order. The carrier flange width specified by you is considered as factory provided by us and the trolley is set accordingly. If no flange width is specified then it is assumed that it should be used for different carriers within the scope of its adjustability and the trolley is delivered unmounted.
- Before starting operation of the trolley please consider the following points: The actual flange width should be determined before setting up the carriage on the trolley. This is:  
Runway beam bottom flange width + approx. 2 mm = track width in mm. Leveling washers and pipes are available on both carrier bolts of the carriage. By setting down or adding such distance elements the two side panels of the carriage can be pressed together or drawn apart on the bolt until the desired track width is reached. Proceed symmetrically so that the load-bearing tab can be located exactly in the centre under the carrier. Surplus washers should be mounted externally!  
The washers and self locking nuts are superimposed on the suspension bolts and the side frames are twisted after attaining the track width.
- After the track adjustment has been carried out, the carriage can be pushed onto the end of the carriers. If this is not possible due to lack of space or fixed end stoppers then the carriage can be mounted as aforesaid on the carrier. Please consider the firm seating of the crown nuts.
- The reel trolley is moved by pulling the endless hand chain to the right or left. This is not applicable in case of a push trolley.
- Drive the reel trolley always manually! Do not install fast, power driven movement mechanisms or tow the trolleys using them!

- Always keep an eye on the load if it is moved!
- If multiple trolleys are required for carrying the load due to long or bulky load then every trolley should select the total carrying capacity of the attached load. This prevents damage in case the load hangs improperly on only one trolley.

## 19. Maintenance and inspection

The trolley is maintenance free.

## 20. Spare parts drawing for push trolley LHT-H





## 21. Spare parts list for push trolley LHT-H

### Parts for LHT-H 0,5 t

<b>Itm.</b>	<b>Qty.</b>	<b>Description</b>	<b>Part-No.</b>	<b>Unity</b>
1	2	Side plate	LHT.H050.001	Piece
2	4	Wheel	LHT.H050.002	Piece
3	4	Cover for bearing	LHT.H050.003	Piece
4	4	Buffer	LHT.H050.004	Piece
5	4	Snap ring	LHT.H050.005	Piece
6	4	Snap ring for shaft	LHT.H050.006	Piece
7	1	Traverse	LHT.H050.007	Piece
8	2	Axle sets	LHT.H050.008	Piece
9	4	Washer 1 mm	LHT.H050.009	Piece
10	24	Washer 2 mm	LHT.H050.010	Piece
11	8	Distance sleeve 25 mm	LHT.H050.011	Piece
12	4	Distance sleeve 13 mm	LHT.H050.012	Piece
13	4	Washer for nut	LHT.H050.013	Piece
14	4	Ball bearing	LHT.H050.014	Piece
15	4	Splint	LHT.H050.015	Piece
16	4	Castle nut	LHT.H050.016	Piece

### Parts for LHT-H 1 t

<b>Itm.</b>	<b>Qty.</b>	<b>Description</b>	<b>Part-No.</b>	<b>Unity</b>
1	2	Side plate	LHT.H100.001	Piece
2	4	Wheel	LHT.H100.002	Piece
3	4	Cover for bearing	LHT.H100.003	Piece
4	4	Buffer	LHT.H100.004	Piece
5	4	Snap ring	LHT.H100.005	Piece
6	4	Snap ring for shaft	LHT.H100.006	Piece
7	1	Traverse	LHT.H100.007	Piece
8	2	Axle sets	LHT.H100.008	Piece
9	4	Washer 1 mm	LHT.H100.009	Piece
10	24	Washer 2 mm	LHT.H100.010	Piece
11	8	Distance sleeve 25 mm	LHT.H100.011	Piece
12	4	Distance sleeve 13 mm	LHT.H100.012	Piece
13	4	Washer for nut	LHT.H100.013	Piece
14	4	Ball bearing	LHT.H100.014	Piece
15	4	Splint	LHT.H100.015	Piece
16	4	Castle nut	LHT.H100.016	Piece

## Parts for LHT-H 1,5t

<b>Itm.</b>	<b>Qty.</b>	<b>Description</b>	<b>Part-No.</b>	<b>Unity</b>
1	2	Side plate	LHT.H150.001	Piece
2	4	Wheel	LHT.H150.002	Piece
3	4	Cover for bearing	LHT.H150.003	Piece
4	4	Buffer	LHT.H150.004	Piece
5	4	Snap ring	LHT.H150.005	Piece
6	4	Snap ring for shaft	LHT.H150.006	Piece
7	1	Traverse	LHT.H150.007	Piece
8	2	Axle sets	LHT.H150.008	Piece
9	4	Washer 1 mm	LHT.H150.009	Piece
10	24	Washer 2 mm	LHT.H150.010	Piece
11	8	Distance sleeve 25 mm	LHT.H150.011	Piece
12	4	Distance sleeve 13 mm	LHT.H150.012	Piece
13	4	Washer for nut	LHT.H150.013	Piece
14	4	Ball bearing	LHT.H150.014	Piece
15	4	Splint	LHT.H150.015	Piece
16	4	Castle nut	LHT.H150.016	Piece

## Parts for LHT-H 2t

<b>Itm.</b>	<b>Qty.</b>	<b>Description</b>	<b>Part-No.</b>	<b>Unity</b>
1	2	Side plate	LHT.H200.001	Piece
2	4	Wheel	LHT.H200.002	Piece
3	4	Cover for bearing	LHT.H200.003	Piece
4	4	Buffer	LHT.H200.004	Piece
5	4	Snap ring	LHT.H200.005	Piece
6	4	Snap ring for shaft	LHT.H200.006	Piece
7	1	Traverse	LHT.H200.007	Piece
8	2	Axle sets	LHT.H200.008	Piece
9	4	Washer 1 mm	LHT.H200.009	Piece
10	24	Washer 2 mm	LHT.H200.010	Piece
11	8	Distance sleeve 25 mm	LHT.H200.011	Piece
12	4	Distance sleeve 13 mm	LHT.H200.012	Piece
13	4	Washer for nut	LHT.H200.013	Piece
14	4	Ball bearing	LHT.H200.014	Piece
15	4	Splint	LHT.H200.015	Piece
16	4	Castle nut	LHT.H200.016	Piece

### Parts for LHT-H 3 t

<b>Itm.</b>	<b>Qty.</b>	<b>Description</b>	<b>Part-No.</b>	<b>Unity</b>
1	2	Side plate	LHT.H300.001	Piece
2	4	Wheel	LHT.H300.002	Piece
3	4	Cover for bearing	LHT.H300.003	Piece
4	4	Buffer	LHT.H300.004	Piece
5	4	Snap ring	LHT.H300.005	Piece
6	4	Snap ring for shaft	LHT.H300.006	Piece
7	1	Traverse	LHT.H300.007	Piece
8	2	Axle sets	LHT.H300.008	Piece
9	4	Washer 1 mm	LHT.H300.009	Piece
10	24	Washer 2 mm	LHT.H300.010	Piece
11	8	Distance sleeve 25 mm	LHT.H300.011	Piece
12	4	Distance sleeve 13 mm	LHT.H300.012	Piece
13	4	Washer for nut	LHT.H300.013	Piece
14	4	Ball bearing	LHT.H300.014	Piece
15	4	Splint	LHT.H300.015	Piece
16	4	Castle nut	LHT.H300.016	Piece

### Parts for LHT-H 5 t

<b>Itm.</b>	<b>Qty.</b>	<b>Description</b>	<b>Part-No.</b>	<b>Unity</b>
1	2	Side plate	LHT.H500.001	Piece
2	4	Wheel	LHT.H500.002	Piece
3	4	Cover for bearing	LHT.H500.003	Piece
4	4	Buffer	LHT.H500.004	Piece
5	4	Snap ring	LHT.H500.005	Piece
6	4	Snap ring for shaft	LHT.H500.006	Piece
7	1	Traverse	LHT.H500.007	Piece
8	2	Axle sets	LHT.H500.008	Piece
9	4	Washer 1 mm	LHT.H500.009	Piece
10	24	Washer 2 mm	LHT.H500.010	Piece
11	8	Distance sleeve 25 mm	LHT.H500.011	Piece
12	4	Distance sleeve 13 mm	LHT.H500.012	Piece
13	4	Washer for nut	LHT.H500.013	Piece
14	4	Ball bearing	LHT.H500.014	Piece
15	4	Splint	LHT.H500.015	Piece
16	4	Castle nut	LHT.H500.016	Piece

## Parts for LHT-H 7,5t

<b>Itm.</b>	<b>Qty.</b>	<b>Description</b>	<b>Part-No.</b>	<b>Unity</b>
1	2	Side plate	LHT.H750.001	Piece
2	4	Wheel	LHT.H750.002	Piece
3	4	Cover for bearing	LHT.H750.003	Piece
4	4	Buffer	LHT.H750.004	Piece
5	4	Snap ring	LHT.H750.005	Piece
6	4	Snap ring for shaft	LHT.H750.006	Piece
7	1	Traverse	LHT.H750.007	Piece
8	2	Axle sets	LHT.H750.008	Piece
9	4	Washer 1 mm	LHT.H750.009	Piece
10	24	Washer 2 mm	LHT.H750.010	Piece
11	8	Distance sleeve 25 mm	LHT.H750.011	Piece
12	4	Distance sleeve 13 mm	LHT.H750.012	Piece
13	4	Washer for nut	LHT.H750.013	Piece
14	4	Ball bearing	LHT.H750.014	Piece
15	4	Splint	LHT.H750.015	Piece
16	4	Castle nut	LHT.H750.016	Piece

## Parts for LHT-H 10t

<b>Itm.</b>	<b>Qty.</b>	<b>Description</b>	<b>Part-No.</b>	<b>Unity</b>
1	2	Side plate	LHT.H1000.001	Piece
2	4	Wheel	LHT.H1000.002	Piece
3	4	Cover for bearing	LHT.H1000.003	Piece
4	4	Buffer	LHT.H1000.004	Piece
5	4	Snap ring	LHT.H1000.005	Piece
6	4	Snap ring for shaft	LHT.H1000.006	Piece
7	1	Traverse	LHT.H1000.007	Piece
8	2	Axle sets	LHT.H1000.008	Piece
9	4	Washer 1 mm	LHT.H1000.009	Piece
10	24	Washer 2 mm	LHT.H1000.010	Piece
11	8	Distance sleeve 25 mm	LHT.H1000.011	Piece
12	4	Distance sleeve 13 mm	LHT.H1000.012	Piece
13	4	Washer for nut	LHT.H1000.013	Piece
14	4	Ball bearing	LHT.H1000.014	Piece
15	4	Splint	LHT.H1000.015	Piece
16	4	Castle nut	LHT.H1000.016	Piece

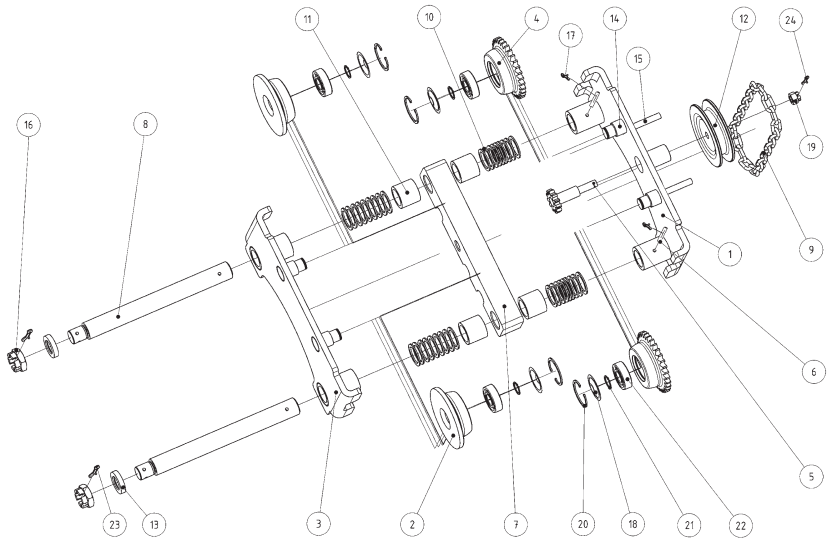
## Parts for LHT-H 15t

Itm.	Qty.	Description	Part-No.	Unity
1	2	Side plate	LHT.H1500.001	Piece
2	4	Wheel	LHT.H1500.002	Piece
3	4	Cover for bearing	LHT.H1500.003	Piece
4	4	Buffer	LHT.H1500.004	Piece
5	4	Snap ring	LHT.H1500.005	Piece
6	4	Snap ring for shaft	LHT.H1500.006	Piece
7	1	Traverse	LHT.H1500.007	Piece
8	2	Axle sets	LHT.H1500.008	Piece
9	4	Washer 1 mm	LHT.H1500.009	Piece
10	24	Washer 2 mm	LHT.H1500.010	Piece
11	8	Distance sleeve 25 mm	LHT.H1500.011	Piece
12	4	Distance sleeve 13 mm	LHT.H1500.012	Piece
13	4	Washer for nut	LHT.H1500.013	Piece
14	4	Ball bearing	LHT.H1500.014	Piece
15	4	Splint	LHT.H1500.015	Piece
16	4	Castle nut	LHT.H1500.016	Piece

## Parts for LHT-H 20t

Itm.	Qty.	Description	Part-No.	Unity
1	2	Side plate	LHT.H2000.001	Piece
2	4	Wheel	LHT.H2000.002	Piece
3	4	Cover for bearing	LHT.H2000.003	Piece
4	4	Buffer	LHT.H2000.004	Piece
5	4	Snap ring	LHT.H2000.005	Piece
6	4	Snap ring for shaft	LHT.H2000.006	Piece
7	1	Traverse	LHT.H2000.007	Piece
8	2	Axle sets	LHT.H2000.008	Piece
9	4	Washer 1 mm	LHT.H2000.009	Piece
10	24	Washer 2 mm	LHT.H2000.010	Piece
11	8	Distance sleeve 25 mm	LHT.H2000.011	Piece
12	4	Distance sleeve 13 mm	LHT.H2000.012	Piece
13	4	Washer for nut	LHT.H2000.013	Piece
14	4	Ball bearing	LHT.H2000.014	Piece
15	4	Splint	LHT.H2000.015	Piece
16	4	Castle nut	LHT.H2000.016	Piece

## 22. Spare parts drawing for geared trolley LHT-G



## 23. Spare parts list for geared trolley LHT-G

### Parts for LHT-G 0,5 t

Itm.	Qty.	Description	Part-No.	Unity
1	1	Front Side plate	LHT.G050.001	Piece
2	2	Wheel	LHT.G050.002	Piece
3	1	Rear side plate	LHT.G050.003	Piece
4	2	Geared wheel	LHT.G050.004	Piece
5	1	Pinion	LHT.G050.005	Piece
6	4	Pin	LHT.G050.006	Piece
7	1	Traverse	LHT.G050.007	Piece
8	2	Carryin bolt set	LHT.G050.008	Piece
9	1	Reel chain	LHT.G050.009	Piece
10	36	Washer 2 mm	LHT.G050.010	Piece
11	4	Distance sleeve 25 mm	LHT.G050.011	Piece
12	1	Reel wheel	LHT.G050.012	Piece
13	2	Washer for nut	LHT.G050.013	Piece
14	4	Wheel axle	LHT.G050.014	Piece
15	2	Chain side bars	LHT.G050.015	Piece
16	2	Castle nut	LHT.G050.016	Piece
17	1	Splint	LHT.G050.017	Piece
18	4	Cover for bearing	LHT.G050.018	Piece
19	1	Castle nut	LHT.G050.019	Piece
20	4	Snap ring	LHT.G050.020	Piece
21	4	Snap ring for bearing	LHT.G050.021	Piece
22	4	Ball bearing	LHT.G050.022	Piece
23	2	Splint	LHT.G050.023	Piece
24	1	Splint	LHT.G050.024	Piece

## Parts for LHT-G 1,5t

<b>Itm.</b>	<b>Qty.</b>	<b>Description</b>	<b>Part-No.</b>	<b>Unity</b>
1	1	Front Side plate	LHT.G150.001	Piece
2	2	Wheel	LHT.G150.002	Piece
3	1	Rear side plate	LHT.G150.003	Piece
4	2	Geared wheel	LHT.G150.004	Piece
5	1	Pinion	LHT.G150.005	Piece
6	4	Pin	LHT.G150.006	Piece
7	1	Traverse	LHT.G150.007	Piece
8	2	Carryin bolt set	LHT.G150.008	Piece
9	1	Reel chain	LHT.G150.009	Piece
10	36	Washer 2 mm	LHT.G150.010	Piece
11	4	Distance sleeve 25 mm	LHT.G150.011	Piece
12	1	Reel wheel	LHT.G150.012	Piece
13	2	Washer for nut	LHT.G150.013	Piece
14	4	Wheel axle	LHT.G150.014	Piece
15	2	Chain side bars	LHT.G150.015	Piece
16	2	Castle nut	LHT.G150.016	Piece
17	1	Splint	LHT.G150.017	Piece
18	4	Cover for bearing	LHT.G150.018	Piece
19	1	Castle nut	LHT.G150.019	Piece
20	4	Snap ring	LHT.G150.020	Piece
21	4	Snap ring for bearing	LHT.G150.021	Piece
22	4	Ball bearing	LHT.G150.022	Piece
23	2	Splint	LHT.G150.023	Piece
24	1	Splint	LHT.G150.024	Piece



## Parts for LHT-G 2t

<b>Itm.</b>	<b>Qty.</b>	<b>Description</b>	<b>Part-No.</b>	<b>Unity</b>
1	1	Front Side plate	LHT.G200.001	Piece
2	2	Wheel	LHT.G200.002	Piece
3	1	Rear side plate	LHT.G200.003	Piece
4	2	Geared wheel	LHT.G200.004	Piece
5	1	Pinion	LHT.G200.005	Piece
6	4	Pin	LHT.G200.006	Piece
7	1	Traverse	LHT.G200.007	Piece
8	2	Carryin bolt set	LHT.G200.008	Piece
9	1	Reel chain	LHT.G200.009	Piece
10	36	Washer 2 mm	LHT.G200.010	Piece
11	4	Distance sleeve 25 mm	LHT.G200.011	Piece
12	1	Reel wheel	LHT.G200.012	Piece
13	2	Washer for nut	LHT.G200.013	Piece
14	4	Wheel axle	LHT.G200.014	Piece
15	2	Chain side bars	LHT.G200.015	Piece
16	2	Castle nut	LHT.G200.016	Piece
17	1	Splint	LHT.G200.017	Piece
18	4	Cover for bearing	LHT.G200.018	Piece
19	1	Castle nut	LHT.G200.019	Piece
20	4	Snap ring	LHT.G200.020	Piece
21	4	Snap ring for bearing	LHT.G200.021	Piece
22	4	Ball bearing	LHT.G200.022	Piece
23	2	Splint	LHT.G200.023	Piece
24	1	Splint	LHT.G200.024	Piece

## Parts for LHT-G 3 t

<b>Itm.</b>	<b>Qty.</b>	<b>Description</b>	<b>Part-No.</b>	<b>Unity</b>
1	1	Front Side plate	LHT.G300.001	Piece
2	2	Wheel	LHT.G300.002	Piece
3	1	Rear side plate	LHT.G300.003	Piece
4	2	Geared wheel	LHT.G300.004	Piece
5	1	Pinion	LHT.G300.005	Piece
6	4	Pin	LHT.G300.006	Piece
7	1	Traverse	LHT.G300.007	Piece
8	2	Carryin bolt set	LHT.G300.008	Piece
9	1	Reel chain	LHT.G300.009	Piece
10	36	Washer 2 mm	LHT.G300.010	Piece
11	4	Distance sleeve 25 mm	LHT.G300.011	Piece
12	1	Reel wheel	LHT.G300.012	Piece
13	2	Washer for nut	LHT.G300.013	Piece
14	4	Wheel axle	LHT.G300.014	Piece
15	2	Chain side bars	LHT.G300.015	Piece
16	2	Castle nut	LHT.G300.016	Piece
17	1	Splint	LHT.G300.017	Piece
18	4	Cover for bearing	LHT.G300.018	Piece
19	1	Castle nut	LHT.G300.019	Piece
20	4	Snap ring	LHT.G300.020	Piece
21	4	Snap ring for bearing	LHT.G300.021	Piece
22	4	Ball bearing	LHT.G300.022	Piece
23	2	Splint	LHT.G300.023	Piece
24	1	Splint	LHT.G300.024	Piece

## Parts for LHT-G 5 t

<b>Itm.</b>	<b>Qty.</b>	<b>Description</b>	<b>Part-No.</b>	<b>Unity</b>
1	1	Front Side plate	LHT.G500.001	Piece
2	2	Wheel	LHT.G500.002	Piece
3	1	Rear side plate	LHT.G500.003	Piece
4	2	Geared wheel	LHT.G500.004	Piece
5	1	Pinion	LHT.G500.005	Piece
6	4	Pin	LHT.G500.006	Piece
7	1	Traverse	LHT.G500.007	Piece
8	2	Carryin bolt set	LHT.G500.008	Piece
9	1	Reel chain	LHT.G500.009	Piece
10	36	Washer 2 mm	LHT.G500.010	Piece
11	4	Distance sleeve 25 mm	LHT.G500.011	Piece
12	1	Reel wheel	LHT.G500.012	Piece
13	2	Washer for nut	LHT.G500.013	Piece
14	4	Wheel axle	LHT.G500.014	Piece
15	2	Chain side bars	LHT.G500.015	Piece
16	2	Castle nut	LHT.G500.016	Piece
17	1	Splint	LHT.G500.017	Piece
18	4	Cover for bearing	LHT.G500.018	Piece
19	1	Castle nut	LHT.G500.019	Piece
20	4	Snap ring	LHT.G500.020	Piece
21	4	Snap ring for bearing	LHT.G500.021	Piece
22	4	Ball bearing	LHT.G500.022	Piece
23	2	Splint	LHT.G500.023	Piece
24	1	Splint	LHT.G500.024	Piece

## Parts for LHT-G 7,5t

<b>Itm.</b>	<b>Qty.</b>	<b>Description</b>	<b>Part-No.</b>	<b>Unity</b>
1	1	Front Side plate	LHT.G750.001	Piece
2	2	Wheel	LHT.G750.002	Piece
3	1	Rear side plate	LHT.G750.003	Piece
4	2	Geared wheel	LHT.G750.004	Piece
5	1	Pinion	LHT.G750.005	Piece
6	4	Pin	LHT.G750.006	Piece
7	1	Traverse	LHT.G750.007	Piece
8	2	Carryin bolt set	LHT.G750.008	Piece
9	1	Reel chain	LHT.G750.009	Piece
10	36	Washer 2 mm	LHT.G750.010	Piece
11	4	Distance sleeve 25 mm	LHT.G750.011	Piece
12	1	Reel wheel	LHT.G750.012	Piece
13	2	Washer for nut	LHT.G750.013	Piece
14	4	Wheel axle	LHT.G750.014	Piece
15	2	Chain side bars	LHT.G750.015	Piece
16	2	Castle nut	LHT.G750.016	Piece
17	1	Splint	LHT.G750.017	Piece
18	4	Cover for bearing	LHT.G750.018	Piece
19	1	Castle nut	LHT.G750.019	Piece
20	4	Snap ring	LHT.G750.020	Piece
21	4	Snap ring for bearing	LHT.G750.021	Piece
22	4	Ball bearing	LHT.G750.022	Piece
23	2	Splint	LHT.G750.023	Piece
24	1	Splint	LHT.G750.024	Piece

## Parts for LHT-G 10t

<b>Itm.</b>	<b>Qty.</b>	<b>Description</b>	<b>Part-No.</b>	<b>Unity</b>
1	1	Front Side plate	LHT.G1000.001	Piece
2	2	Wheel	LHT.G1000.002	Piece
3	1	Rear side plate	LHT.G1000.003	Piece
4	2	Geared wheel	LHT.G1000.004	Piece
5	1	Pinion	LHT.G1000.005	Piece
6	4	Pin	LHT.G1000.006	Piece
7	1	Traverse	LHT.G1000.007	Piece
8	2	Carryin bolt set	LHT.G1000.008	Piece
9	1	Reel chain	LHT.G1000.009	Piece
10	36	Washer 2 mm	LHT.G1000.010	Piece
11	4	Distance sleeve 25 mm	LHT.G1000.011	Piece
12	1	Reel wheel	LHT.G1000.012	Piece
13	2	Washer for nut	LHT.G1000.013	Piece
14	4	Wheel axle	LHT.G1000.014	Piece
15	2	Chain side bars	LHT.G1000.015	Piece
16	2	Castle nut	LHT.G1000.016	Piece
17	1	Splint	LHT.G1000.017	Piece
18	4	Cover for bearing	LHT.G1000.018	Piece
19	1	Castle nut	LHT.G1000.019	Piece
20	4	Snap ring	LHT.G1000.020	Piece
21	4	Snap ring for bearing	LHT.G1000.021	Piece
22	4	Ball bearing	LHT.G1000.022	Piece
23	2	Splint	LHT.G1000.023	Piece
24	1	Splint	LHT.G1000.024	Piece

## Parts for LHT-G 15t

<b>Itm.</b>	<b>Qty.</b>	<b>Description</b>	<b>Part-No.</b>	<b>Unity</b>
1	1	Front Side plate	LHT.G1500.001	Piece
2	2	Wheel	LHT.G1500.002	Piece
3	1	Rear side plate	LHT.G1500.003	Piece
4	2	Geared wheel	LHT.G1500.004	Piece
5	1	Pinion	LHT.G1500.005	Piece
6	4	Pin	LHT.G1500.006	Piece
7	1	Traverse	LHT.G1500.007	Piece
8	2	Carryin bolt set	LHT.G1500.008	Piece
9	1	Reel chain	LHT.G1500.009	Piece
10	36	Washer 2 mm	LHT.G1500.010	Piece
11	4	Distance sleeve 25 mm	LHT.G1500.011	Piece
12	1	Reel wheel	LHT.G1500.012	Piece
13	2	Washer for nut	LHT.G1500.013	Piece
14	4	Wheel axle	LHT.G1500.014	Piece
15	2	Chain side bars	LHT.G1500.015	Piece
16	2	Castle nut	LHT.G1500.016	Piece
17	1	Splint	LHT.G1500.017	Piece
18	4	Cover for bearing	LHT.G1500.018	Piece
19	1	Castle nut	LHT.G1500.019	Piece
20	4	Snap ring	LHT.G1500.020	Piece
21	4	Snap ring for bearing	LHT.G1500.021	Piece
22	4	Ball bearing	LHT.G1500.022	Piece
23	2	Splint	LHT.G1500.023	Piece
24	1	Splint	LHT.G1500.024	Piece

## Parts for LHT-G 20t

<b>Itm.</b>	<b>Qty.</b>	<b>Description</b>	<b>Part-No.</b>	<b>Unity</b>
1	1	Front Side plate	LHT.G2000.001	Piece
2	2	Wheel	LHT.G2000.002	Piece
3	1	Rear side plate	LHT.G2000.003	Piece
4	2	Geared wheel	LHT.G2000.004	Piece
5	1	Pinion	LHT.G2000.005	Piece
6	4	Pin	LHT.G2000.006	Piece
7	1	Traverse	LHT.G2000.007	Piece
8	2	Carryin bolt set	LHT.G2000.008	Piece
9	1	Reel chain	LHT.G2000.009	Piece
10	36	Washer 2 mm	LHT.G2000.010	Piece
11	4	Distance sleeve 25 mm	LHT.G2000.011	Piece
12	1	Reel wheel	LHT.G2000.012	Piece
13	2	Washer for nut	LHT.G2000.013	Piece
14	4	Wheel axle	LHT.G2000.014	Piece
15	2	Chain side bars	LHT.G2000.015	Piece
16	2	Castle nut	LHT.G2000.016	Piece
17	1	Splint	LHT.G2000.017	Piece
18	4	Cover for bearing	LHT.G2000.018	Piece
19	1	Castle nut	LHT.G2000.019	Piece
20	4	Snap ring	LHT.G2000.020	Piece
21	4	Snap ring for bearing	LHT.G2000.021	Piece
22	4	Ball bearing	LHT.G2000.022	Piece
23	2	Splint	LHT.G2000.023	Piece
24	1	Splint	LHT.G2000.024	Piece







CE-Declaration of Conformity  
in the sense of 2006/42/EC Guidelines, Appendix II A, 2004/108/EG,  
Appendix I and 2006/95/EG, Appendix III

We herewith declare that the

**PLANETA-Hebetechnik GmbH, Resser Straße 17, 44653 Herne**

that the partly completed machinery

**Low Headroom Trolley Hoist  
in payload range**

**Model LHT-H & LHT-G  
500 kg – 20.000 kg**

which was developed for lifting and lowering of loads, in the standard version, including load capacity control and meets the basic requirements for the following EC directives, as applicable for the delivered scope:

**EG-Machine-Directive 2006/42/EG**

Authorized for the compilation of the relevant technical documentation

**Dipl.-Ing. Matthias B. Klawitter, CE-Koordinator,  
PLANETA-Hebetechnik GmbH, Resser Straße 17, 44653 Herne**

Herne, 13.03.2015

PLANETA-Hebetechnik GmbH



Dipl.-Ing. Paul H. Klawitter  
(General Manager)

For the completion, installation and commissioning according to the operating instructions is responsible

Location .....

Date .....

Person in charge .....

Company .....

**Your responsible supplier**