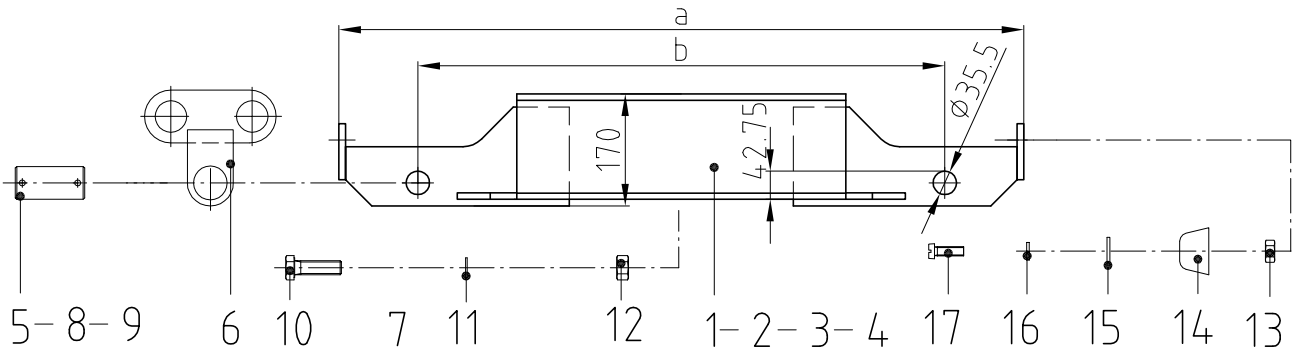
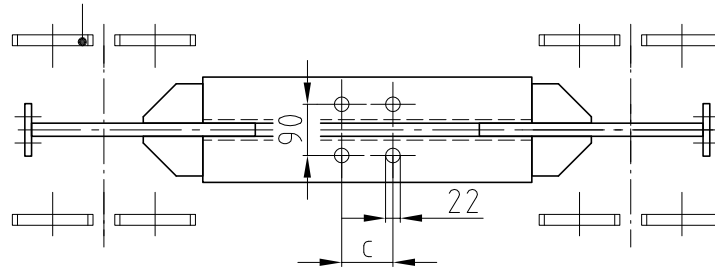


Type	a	b	max. span width	c	
ERK 300/ 800	1040	800	5000	- dependent on size of cross beam - Recommendation to DIN 997	- Lifting capacity max. 4000kg - Drilling for cross beam on site - Colour: grey primed
ERK 300/ 1200	1440	1200	7500		
ERK 300/ 1600	1840	1600	10000		
ERK 300/ 2000	2240	2000	12500		



Stückzahl Quantity			
VI	III	II	I
ERK 300/ 2000	ERK 300/ 1600	ERK 300/ 1200	ERK 300/ 800



8	8	8	8	Slotted cheese head screw M8x25	St 4.8, vz	17	0030.3505
8	8	8	8	Spring washer M8	FSt, vz	16	9031.3904
8	8	8	8	Washer 8.4/17x1.6	St, vz	15	0031.0578
8	8	8	8	Buffer $\phi 40 \times 25$	SBR	14	9038.4500
8	8	8	8	Hexagon nut M8, 0.8d	St 8, vz	13	0031.0008
8	8	8	8	Hexagon nut M20, 0.8d	St 8, vz	12	0031.0043
8	8	8	8	Washer HV M20	St, vz	11	9031.3230
8	8	8	8	Hexagon screw M20x50	St 8.8, vz	10	9030.5305
8	8	8	8	Washer 60/36x5	St vz	9	9031.3009
8	8	8	8	Splint pin $\phi 8 \times 71$	St vz	8	0031.5080
8	8	8	8	Pipe R55/3.5x7.5	E235	7	9249.1501.4
4	4	4	4	Pivot unit	S235JR	6	9249.1500.3
4	4	4	4	Bolt	C35E	5	9249.1502.4
2				Basic side frame l=2000	S235JR	4	9244.3010.3
	2			Basic side frame l=1600	S235JR	3	9244.3009.3
		2		Basic side frame l=1200	S235JR	2	9244.3008.3
			2	Basic side frame l=800	S235JR	1	9244.3007.3

Bezeichnung / Dimension			Werkstoff	Pos.	Artikel-Nr.
Norm freigeben			Klasse:	Ersetzt durch	Ersatz für
REV.	DATUM	USER	Basic side frame set		
-					
Gezeichnet		J.SUPPIGER	ERK300 Technical datasheet		
			Masstab 1:5		1 /

			swiss lifting solutions		9248.9222.1	Revision -
--	--	--	-------------------------	--	-------------	---------------