



swiss lifting solutions

ERSATZTEILE | STROMLAUFPLÄNE GPR 1000

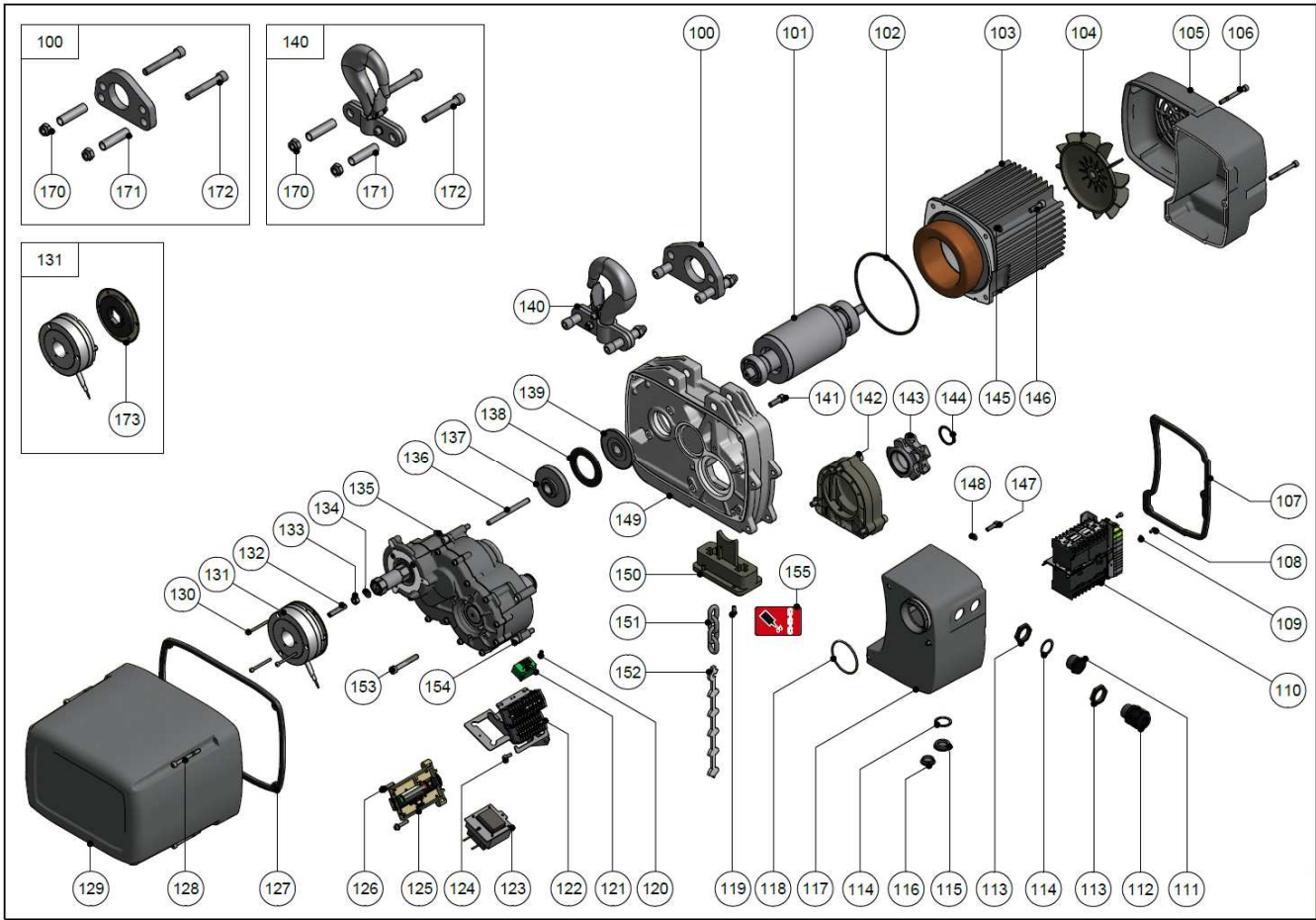
Spare parts | Pièces de rechange | Onderdelen | Reservedele | Varaosat |
Pezzi di ricambio | Reservedelen | Peças | Reservdelar | Piezas de recambio

Circuit diagrams | Schéma de connexions | Stroomschema | Kredslobsdiagrammer |
Kytkentäkaavio | Aansluitschema | Schema elettrico | Koplingskjema |
Esquema electrico | Elschema | Esquema eléctrico

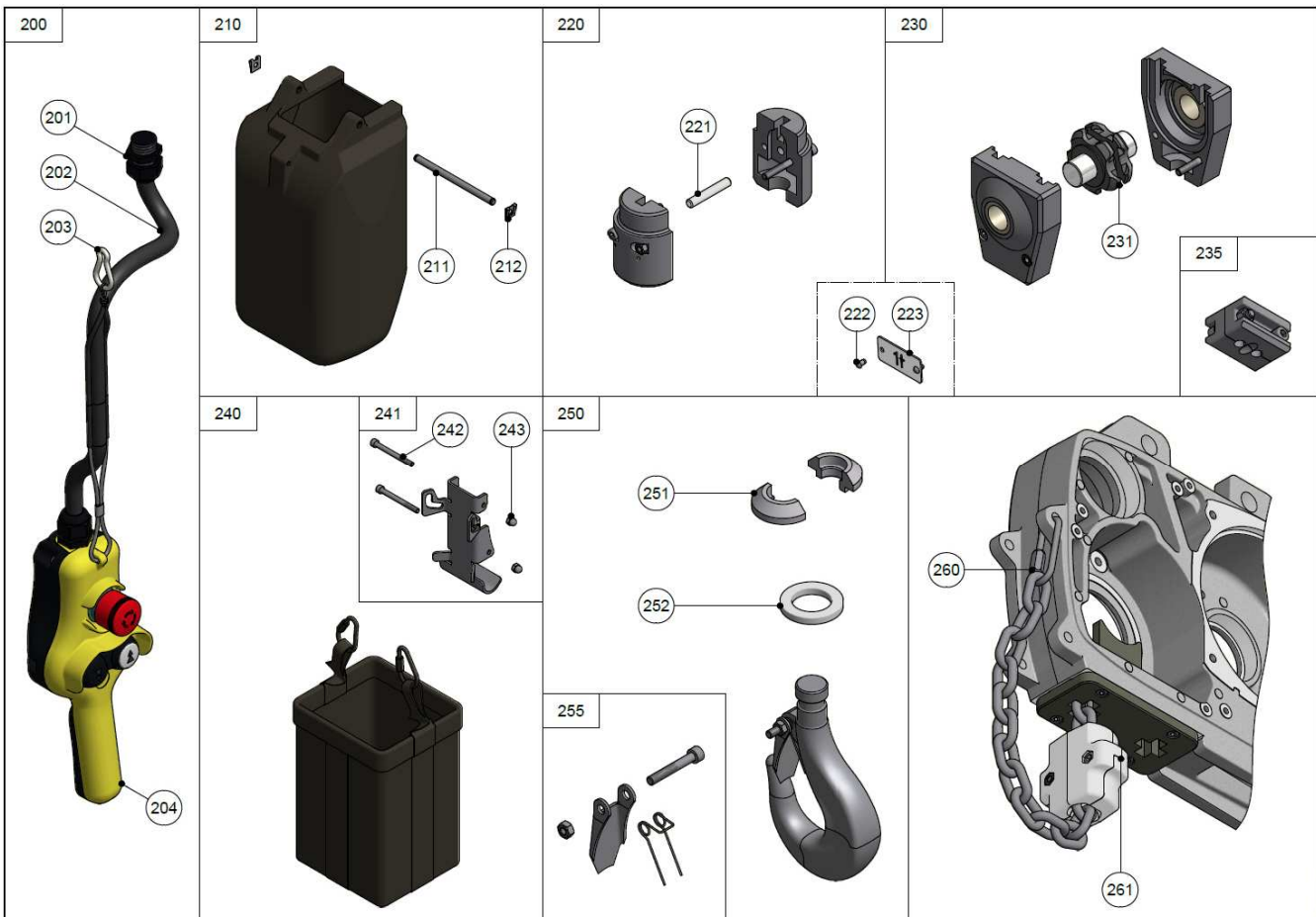


www.gis-ag.ch





955924.5



955925.5

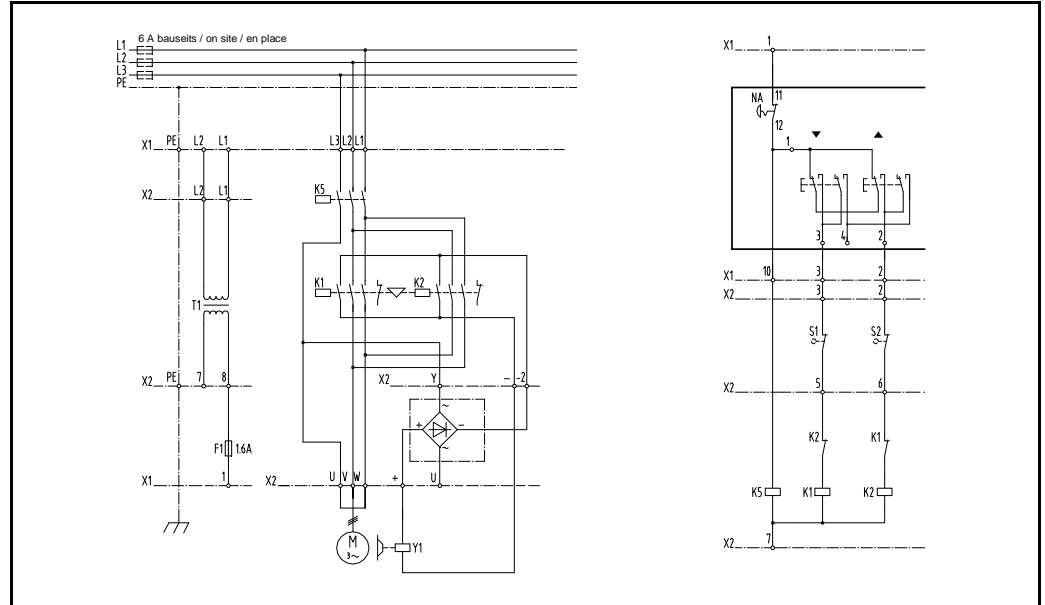
Pos.		GPR 1000
100	141 x 96	9405.4505.4
101	2t L=120	9515.3027.3
	1t L=90	9515.3028.3
102	ø156/ø149 x 2.5	9515.3054.4
103	2/8p 3 x 400V 50Hz	9517.0350.3
	2/8p 3 x 230V 50Hz	9517.0351.3
	2/8p 3 x 460V 60Hz	9517.0350.3
	2p 3x230/400V 50Hz	9517.0250.3
	2p 3x460V 60Hz	9517.0250.3
104	ø166/ø14 x 43	9515.3075.3
105	217 x 108 x 310	9515.3011.2
106	M6 x 60/24 N	9030.0533
107	143 x 219 x 6	9515.3033.3
108	M4 x 8	9030.0325
109	M4	9031.3901
110	2t + NA 42V	9517.1100.2
	1t + NA 42V	9517.1000.2
111	M25 x 1.5	9055.3517
112	M25 x 1.5	9055.3103
113	M25	9055.4013
114	ø29.5/ø23.2 x 1	9040.2511
115	M25 x 1.5	9055.3513
116	M20 x 1.5	9055.3512
117	141 x 217 x 134	9515.3006.3
118	ø59 x 2.5 NBR 70	9035.0034
119	M5 x 12	0030.0282
120	M3 x 8	9030.8030
121	PMEA 500	9050.4023
122	1t, 2t, 480V	9512.1200.3
	DC	9512.1201.3
	1t, 2t, 500V-690V	9512.1202.3
123	400/42V	9056.4701.4
	230/42V	9056.4741.4
	460/42V	9056.4741.4
124	M5 x 10	9030.0027
125	103 x 84 x 41	9500.3069.3
126	M5 x 25	9030.0022
127	305 x 212 x 6	9515.3034.3
128	M6 x 60/24 N	9030.0533
129	303 x 251 x 210	9515.3086.3
130	M5 x 50/22	9030.0270
131	12Nm 100-125VAC 50/60Hz	9050.4100
	12Nm 200-240VAC 50/60Hz	9050.4101
	12Nm 360-420VAC 50/60Hz	9050.4102
	12Nm 440-480VAC 50/60Hz	9050.4103
	12Nm 500-575VAC 50/60Hz	9050.4104
132	M8 x 40	9030.2018
133	M8	0031.0008
134	ø8.4/ø16 x 1.6	0031.0578
135	258 x 176 x 254 N	9515.4505.2
136	ø8 x 100	9031.5863
137	ø76 x 18	9515.3062.3
138	ø75/ø51 x 4	9515.3061.4
139	ø77 x 9	9515.3063.3
140	185 x 140 x 92	9405.4509.3
141	M8 x 25	9030.0287
142	136 x 63 x 133	9515.4504.4
143	ø82 x 41.5	9515.4500.2
144	DIN 471 32 x 1.5	9031.2102
145	M8	9031.4004
146	M8 x 25	0030.0317
147	M6 x 20	0030.9230
148	ø10.5/ø6.5 x 3	9040.2508
149	256 x 65 x 327	9515.3000.0
150	120 x 60 x 72	9515.4501.2
151	7 x 22	9039.0008
152	236 x 23 x 5 (7 mm)	9041.6022
153	M8 x 55/28 T	9030.0343
154	M8 x 40/28 T	9030.0344
155	0.25l	9041.0008

Pos.		GPR 1000
170	M12	9031.1255
171	ø16/ø13 x 60	9405.4506.4
172	M12 x 80/36	9030.0532
173	ø104.5 x 9.5	9515.3113.4
200	2K NA 3m	9290.1086.3
	2K NA 4m	9290.1087.3
	2K NA 5m	9290.1088.3
	2K NA 6m	9290.1089.3
	2K NA 7m	9290.2014.3
	2K NA 8m	9290.1090.3
	2K NA 10m	9290.1091.3
	2K NA 12m	9290.1092.3
	2K NA 15m	9290.1093.3
	2K NA 20m	9290.1094.3
201	M20x1.5	9055.3102
202	5 x 0.75mm ²	9055.0110
203	ø5 x 50	9031.8004
204	2K NA	9290.2000.3
210	260 x 120 x 155	9515.3016.0
211	ø8 x 130	9500.3086.4
212	15 x 17 x 3.5	9031.2400
220	ø59 x 77	9225.4505.3
221	ø8 x 49	9225.4514.4
222	ø3 x 5	9031.6605
223	0.4t	9220.3470.4
	0.5t	9220.3471.4
	0.63 t	9220.3472.4
	0.8 t	9220.3473.4
	1 t	9220.3474.4
	1.25 t	9220.3475.4
230	110 x 86 130	9225.4504.3
231	ø78 x 85.6	9225.4502.4
235	27 x 36 x 66	9515.4508.4
240	192 x 212 x 320 XS 8m	9515.3108.3
	192 x 212 x 420 S 10m	9515.3109.3
	192 x 212 x 590 M 20m	9515.3110.3
	192 x 212 x 880 L 33m	9515.3111.3
	192 x 212 x 940 XL 38m	9515.3112.3
241	193 x 139 x 63	9515.3098.2
242	M8 x 85/28	9030.0342
243	M8	9031.1052
250	182 x 120 x 40	9225.4521.4
251	23.5 x 47 x 18	9225.4519.4
252	ø47 x ø30 x 6	9225.4520.4
255	69 x 40	9225.4516.4
260	ø5x62	9039.0412
261	55 x 46	9225.4507.4

Elektrokettenzüge | Electric chain hoists | Palans électriques à chaîne

Schützensteuerung Contactor control Commande par contacteurs		1 Geschwindigkeit mit Not-Aus 1 speed with emergency stop 1 vitesse avec marche-arrêt	3 Ph	9510.9500.4
		2 Geschwindigkeiten mit Not-Aus 2 speeds with emergency stop 2 vitesses avec marche-arrêt	3 Ph	9510.9501.4
F	Steuersicherung	Control fuse	Fusible de commande	
K	Schütz	Contacteur	Contacteur	
L	Zuleitung	Power supply	Alimentation électrique	
N	Nullleiter	Neutral	Neutre	
NA	Not-Aus	Emergency stop	Marche-arrêt	
PE	Erdung	Earth	Mise à la terre	
S	Schalter	Switch	Interrupteur	
T	Transformator	Transformer	Transformateur	
U, V, W	Motor	Motor	Moteur	
X	Klemmenleiste	Terminal strip	Bornier de raccordement	
Y	Bremse	Brake	Frein	

9510.9500.4 / 3 Ph



9500.9508.4 / 1 Ph



9510.9501.4 / 3 Ph

