

# KaňcŸ

## Smart Wi-Fi Wall Switch



EU-UK



US

**nest** works with  
Google Nest

 works with  
**IFTTT**

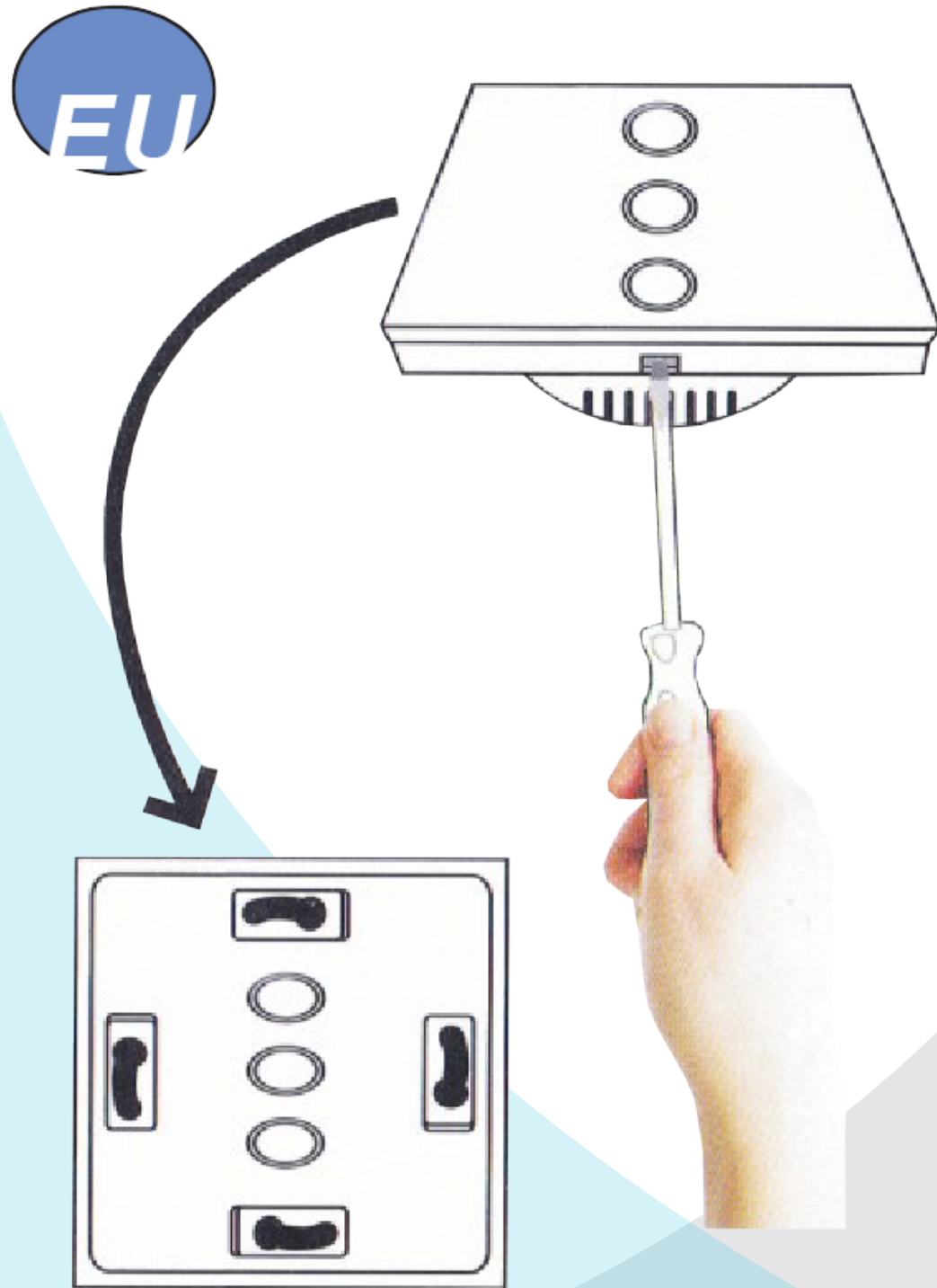
 works with the  
Google Assistant

 WORKS WITH  
amazon alexa

Simplified steps to install the  
Kancy app on your smart device  
and how to pair Amazon Alexa  
and Google Home.

## Installation Wiring Diagram

1. Remove the panel with a screwdriver.



(Noted: Install without electricity power on)

2. Prepare to install wiring

A: Live wire connects "L" terminal

B: Lamp wire connects "L1,L2,L3" terminal

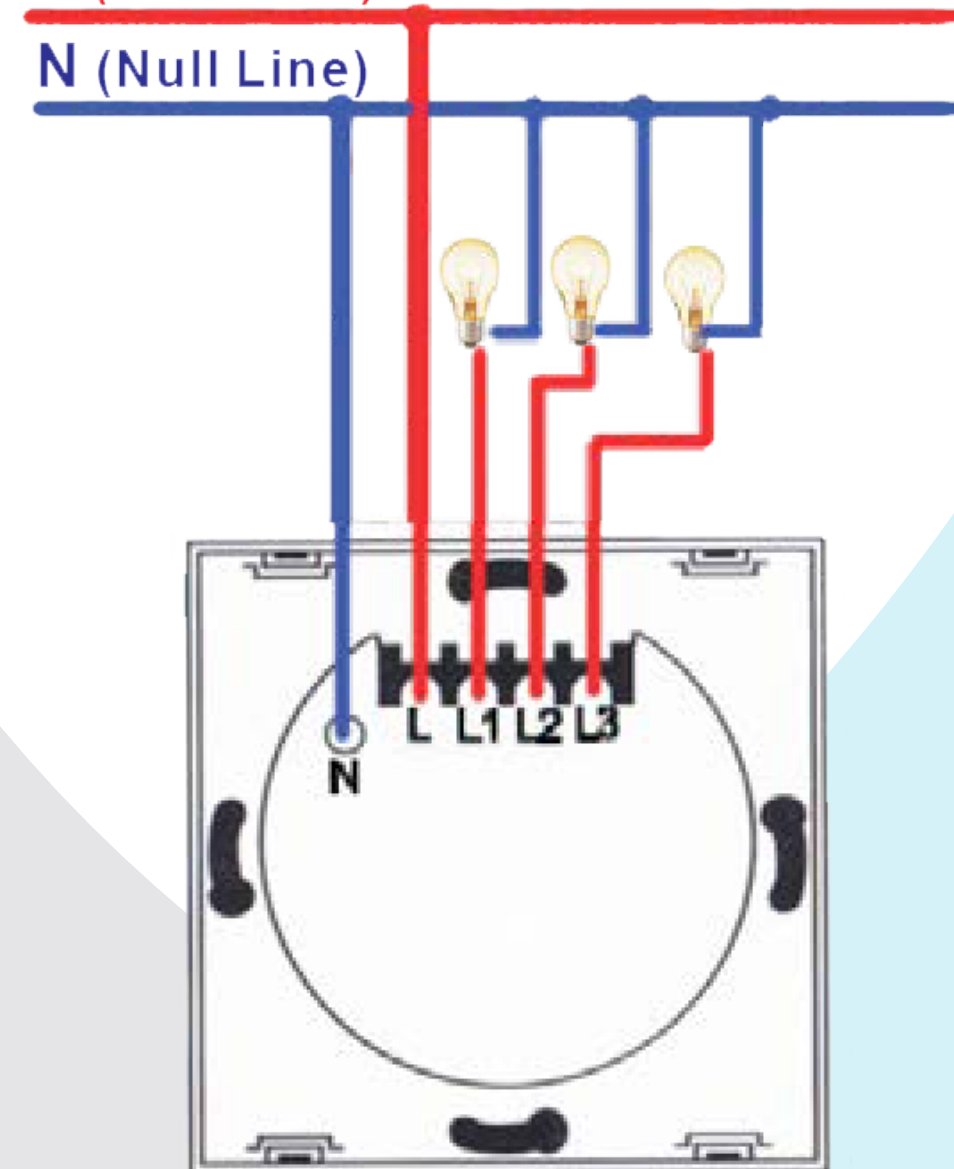
1 gang connects "L1" terminal

2 gang connects "L1,L2" terminal

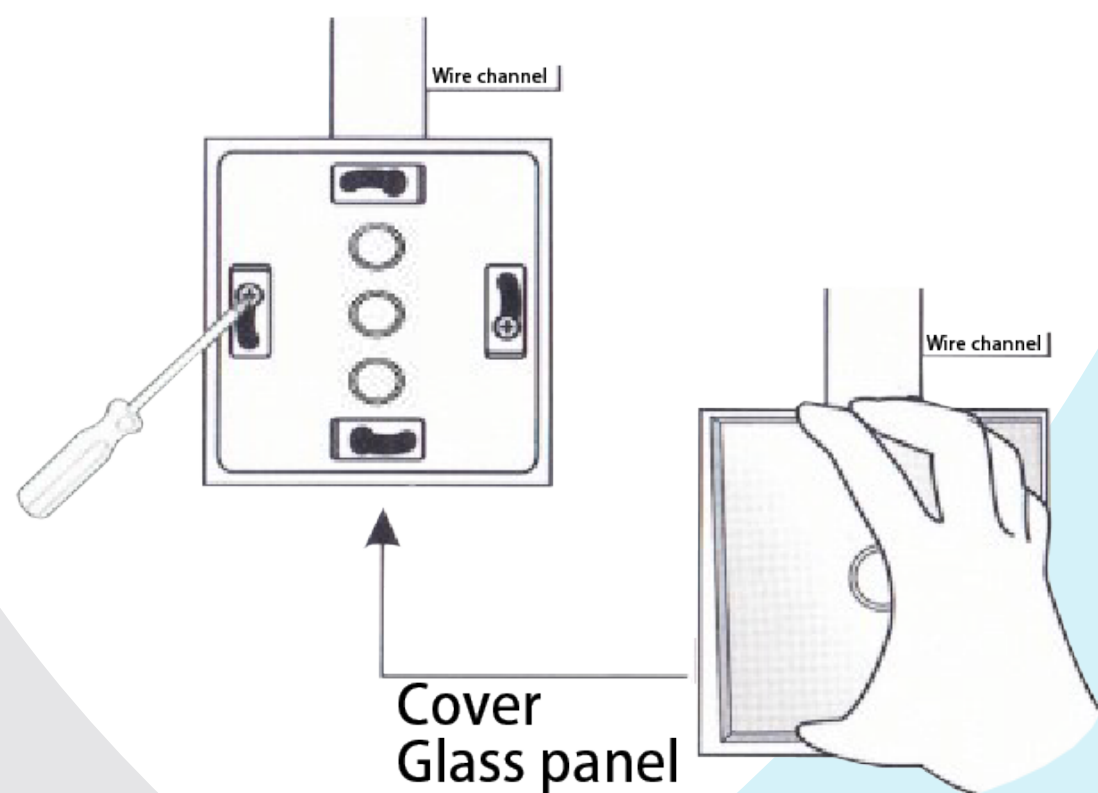
3 gang connects "L1,L2,L3" terminal

L (Live Wire)

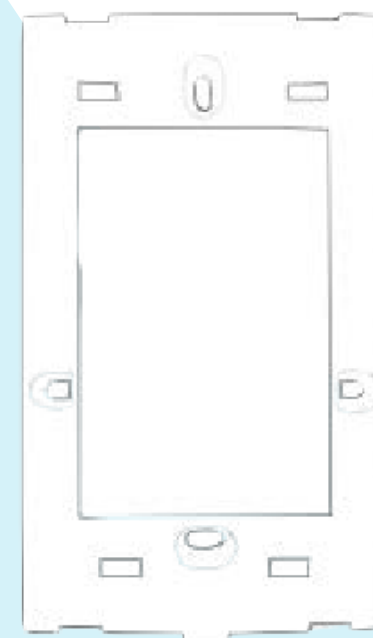
N (Null Line)



3. Attach the switch onto the wall
  - a. Attach the switch to the box on the wall.
  - b. Mount the two side screws.
  - c. Install the glass panel.
  - d. Finish the installation. When turning on the electricity, LED light will flash quickly before entering standby mode.



4. Separate the holder from the switch



**WARNING! Turn off the power during Installation!**

## 5. Prepare to install wiring

A: live wire connects "L" terminal

B: Lamp wire connects "L1,L2,L3" terminal

1 gang connects "L1" terminal

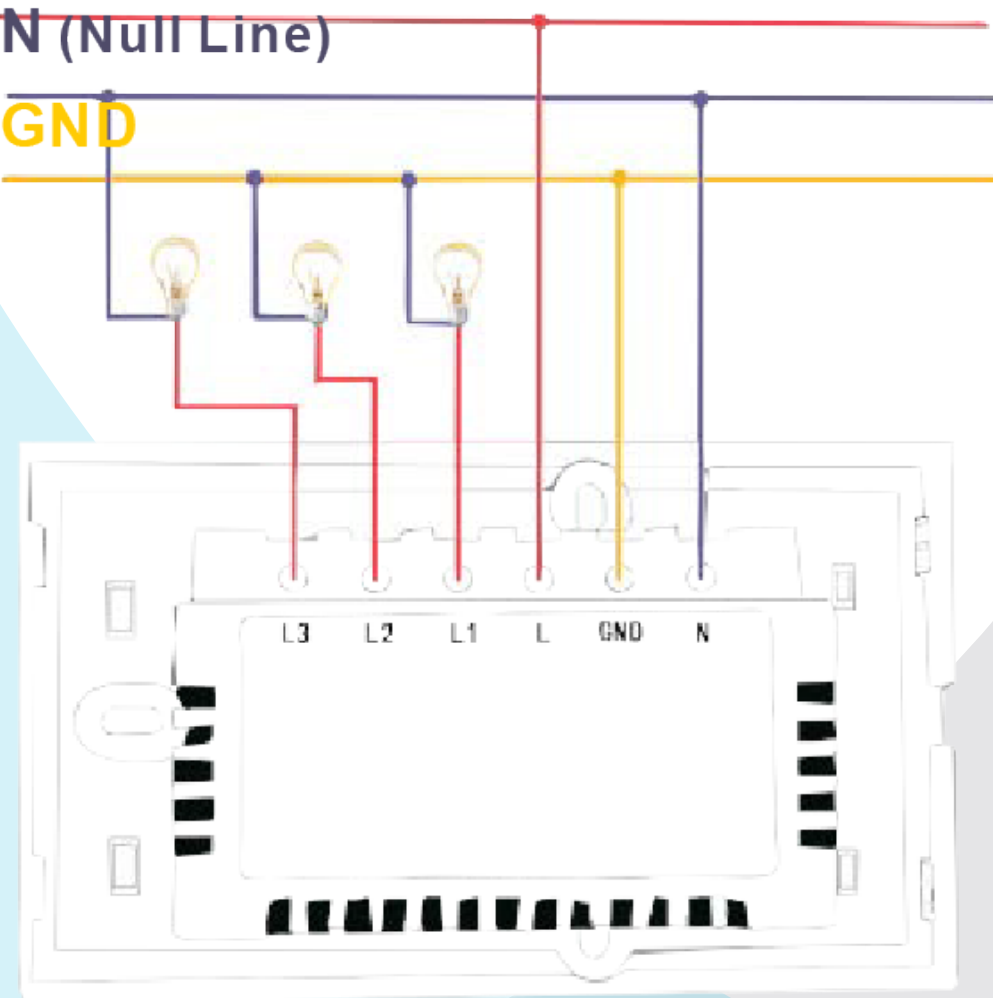
2 gang connects "L1,L2" terminal

3 gang connects "L1,L2,L3 terminal

**L (Live Wire)**

**N (Null Line)**

**GND**



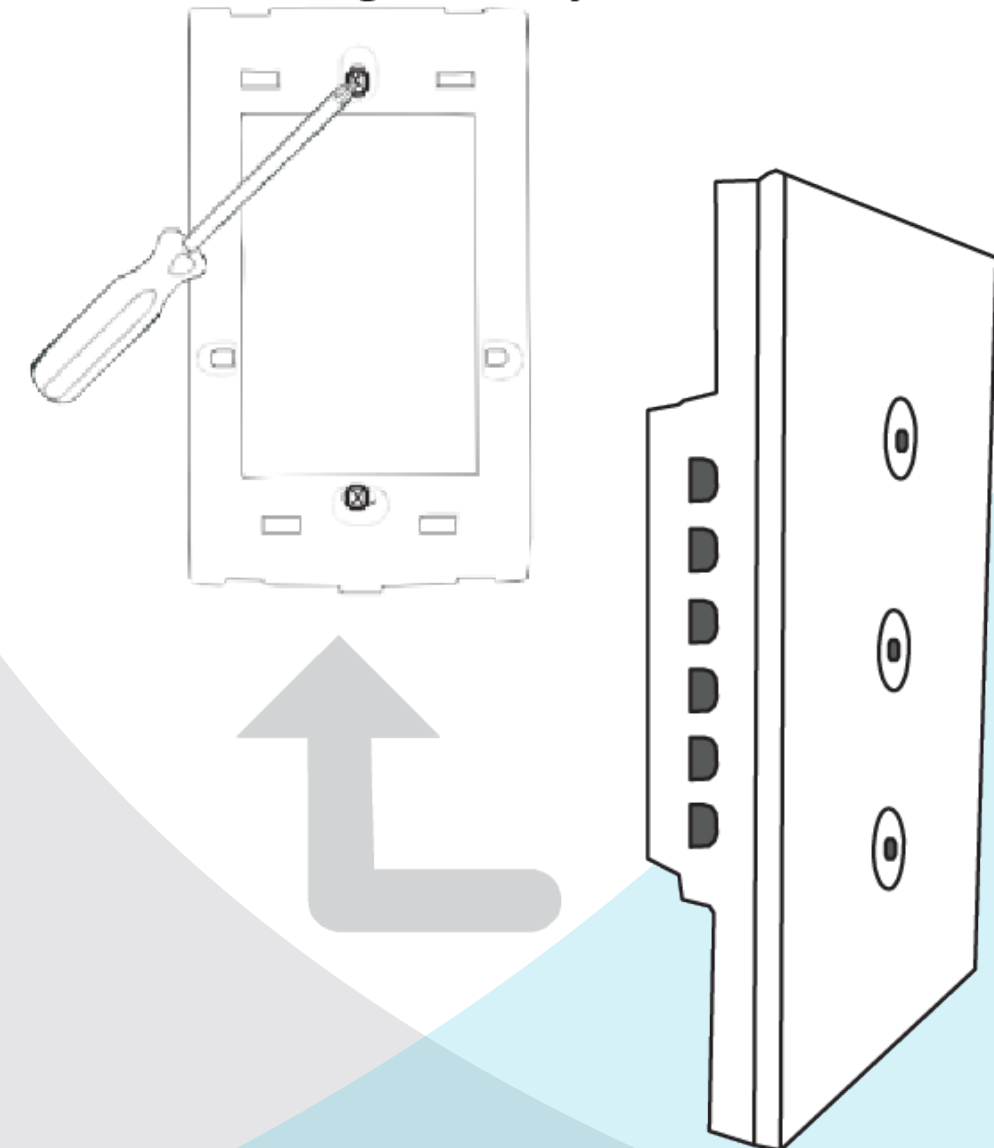
## 6. Fix the switch onto wall

a. Attach the holder on the mount box using a screwdriver.

b. Mount the two side screws.

c. Put the switch into the mount box.

d. Finish the installation. When turning on the electricity, LED light will flash quickly before entering standby mode.



---

# Installation Notes

1. You should get a professional electrician to perform the installation.
2. Turn off the electricity before installation.
3. The switch must be connected to null line, live wire, and live wire of controlled light. Ground line is optional.
4. To distinguish between null line, live wire, live wire of controlled light and GND line, use the test pen to test. If the light of the test pen lights up, it is live wire. Otherwise, it is a null line. In your original wall switch, use test pen to test. If the light is off, it is live wire of controlled light (L, L2, L3), otherwise it is live wire.
5. Since the panel is glass, please handle it with care.

**Note: If there is no null line in your house, you should add a null line.**

