



PRODUCT SHEET

Hashira Pendant
by Norm Architects



Hashira Pendant

BY NORM ARCHITECTS

Translucent, cylindrical fabric shade with metal frame, textile cord and dimmer switch.

PRODUCT OPTIONS

Ø18



White
1502059



Raw
1502699

Ø30



White
1503059



Raw
1503699



Hashira Pendant

BY NORM ARCHITECTS

TECHNICAL SPECIFICATIONS

PRODUCT TYPE
Pendant

COLLI
2

ENVIRONMENT
Indoor

DIMENSIONS

Ø18
H: 60 cm / 23,6"
Ø: 18 cm / 7,1"

Ø30
H: 90 cm / 35,4"
Ø: 30 cm / 11,8"

PRODUCTION PROCESS
Welded steel frame with a hand-made shade.

COLOURS
White, bronzed brass
Raw, bronzed brass

MATERIALS
Steel, linen, PS plastic.
Thickness of line may vary giving a slightly different light.

WEIGHT
Ø18: 1,15 kg / 2,54 lb
Ø30: 2,00 kg / 4,41 lb

VOLTAGE
CE: 220-230 V
US: 110-130 V

LIGHT SOURCE
E27 (CE) - 1 pcs / Small, 2 pcs / Large
E26 (US) - 1 pcs / Small, 2 pcs / Large

Max 40 Watt

LIGHT SPECIFICATION
Bulbs not included

DIMMER
No. The lamp can be connected to a dimmer system

CANOPY
Yes, ABS, black
Ø: 11,5 cm / 4,5"
H: 3,8 cm / 1,5"

CORD MATERIAL AND COLOUR
Textile, black, with safe wire (only the large pendant)

CORD LENGTH
500 cm / 197"

CLASSIFICATION
IP20

CERTIFICATIONS
CE and ETL certified, tests can be obtained upon request.

PACKAGING TYPE
Ø18: Gift box
Ø30: Brown box

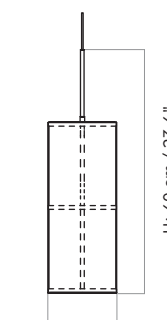
PACKAGING MEASUREMENTS (H x W x D)

Ø18
24 cm x 24 cm x 50 cm / 9,4" x 9,4" x 19,7"

Ø30
37 cm x 37 cm x 80 cm
14,6" x 14,6" x 31,5"

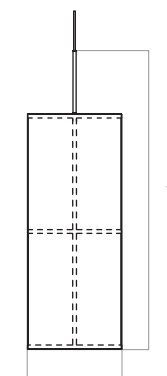
MATERIALS & MAINTENANCE
Please visit menuspace.com for materials and care and maintenance instructions.

Ø18



Ø: 18 cm / 7,1"

Ø30



Ø: 30 cm / 11,8"

Translucent, cylindrical fabric shade with metal frame, textile cord and dimmer switch.

PRODUCT OPTIONS

CLUSTER, Ø32



White
1504059

Raw
1504699

CLUSTER, Ø60



White
1505059



Raw
1505699

TECHNICAL SPECIFICATIONS

PRODUCT TYPE
Pendant

COLLI
1

ENVIRONMENT
Indoor

DIMENSIONS

Ø32
H: 60 cm / 23,6"
Ø: 37 cm / 14,6"

Ø60
H: 90 cm / 35,4"
Ø: 61,5 cm / 24,2"

PRODUCTION PROCESS
Welded steel frame with a hand-made shade.

COLOUR
White, bronzed brass
Raw, bronzed brass

MATERIALS
Steel, linen, PS plastic.
Thickness of line may vary giving a slightly different light.

WEIGHT
Ø32: 3,13 kg / 6,90 lb
Ø60: 5,85 kg / 12,90 lb

VOLTAGE
CE: 220-230 V
US: 110-130 V

LIGHT SOURCE
E27 (CE) - 3 pcs / Small, 6 pcs / Large
E26 (US) - 3 pcs / Small, 6 pcs / Large

Max 40 Watt

LIGHT SPECIFICATION
Bulbs not included

DIMMER
No. The lamp can be connected to a dimmer system

CANOPY
Yes, ABS, black
Ø: 11,5 cm / 4,5"
H: 3,8 cm / 1,5"

CORD MATERIAL AND COLOUR
Textile, black, with safe wire

CORD LENGTH
500 cm / 197"

CLASSIFICATION
IP20

CERTIFICATIONS
CE and ETL certified, tests can be obtained upon request.

PACKAGING TYPE
Brown box

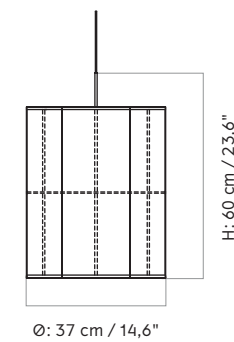
PACKAGING MEASUREMENTS (H x W x D)

Ø32
43,5 cm x 43,5 cm x 49 cm / 9,4" x 9,4" x 19,3"

Ø60
67,5 cm x 67,5 cm x 78 cm / 26,6" x 26,6" x 30,7"

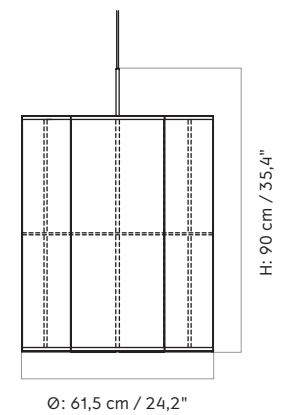
MATERIALS & MAINTENANCE
Please visit menuspace.com for materials and care and maintenance instructions.

CLUSTER, Ø32



Ø: 37 cm / 14,6"

CLUSTER, Ø60



Ø: 61,5 cm / 24,2"



Hashira Table Lamp

BY NORM ARCHITECTS

Translucent, cylindrical fabric shade with metal frame, textile cord and dimmer switch.

PRODUCT OPTIONS



White
1500059



Raw
1500699



Hashira Table Lamp

BY NORM ARCHITECTS

TECHNICAL SPECIFICATIONS

PRODUCT TYPE
Table lamp

COLLI
2

ENVIRONMENT
Indoor

DIMENSIONS
H: 49,5 cm / 19,5"
Ø: 18 cm / 7,1"

PRODUCTION PROCESS
Welded steel frame with a hand-made shade and sandblasted wood base.

COLOUR
White, ash
Raw, stained oak

MATERIALS
Steel, linen, PS plastic, ash.
Thickness of line may vary giving a slightly different light.

WEIGHT
1,48 kg / 3,26 lb

VOLTAGE
CE: 220-230 V
US: 110-130 V

LIGHT SOURCE & ENERGY EFFICIENCY CLASS
E27 (CE) - 1 pcs
E26 (US) - 1 pcs

Max 40 Watt

LIGHT SPECIFICATION
Bulbs not included.

DIMMER
Yes, on cord.

CANOPY
N / A

CORD MATERIAL AND COLOUR
Black textile, black plug.

CORD LENGTH
200 cm / 78,7"

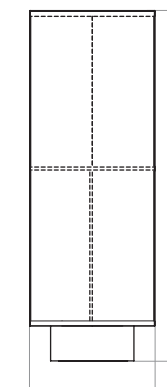
CLASSIFICATION
IP20

CERTIFICATIONS
CE and ETL certified, tests can be obtained upon request.

PACKAGING TYPE
Gift box

PACKAGING MEASUREMENTS (H x W x D)
53,5 cm x 24 cm x 24 cm / 21,1" x 9,4" x 9,4"

MATERIALS & MAINTENANCE
Please visit menospace.com for materials and care and maintenance instructions.



H: 49,5 cm / 19,5"

Ø: 18 cm / 7,1"



Hashira Wall Lamp

BY NORM ARCHITECTS

Taking its design cues from traditional Japanese lanterns, the Hashira Wall Lamp has a translucent textile shade that softly diffuses the light. Conceived for MENU by Norm Architects, it looks equally elegant mounted alone as it does in pairs above a bed or sofa.

PRODUCT OPTIONS



White
1506059



Raw
1506699



Hashira Wall Lamp

BY NORM ARCHITECTS

TECHNICAL SPECIFICATIONS

PRODUCT TYPE
Wall lamp

COLLI
2

ENVIRONMENT
Indoor

DIMENSIONS
H: 30 cm / 11,81"
W: 12,7 cm / 5"
D: 11,6 cm / 4,57"
Ø: 10 cm / 3,94"

PRODUCTION PROCESS
Laser cut and welded steel frame with a hand-made shade.

COLOUR
Raw, stained oak
Black (RAL 9005)

MATERIALS
Powder coated steel, linen, PS plastic

WEIGHT
N / A

VOLTAGE
CE: 220-230 V
US: 110-130 V

LIGHT SOURCE
Replaceable LED
4 W

LIGHT SPECIFICATION
4 W
380 lm
2700K
Ra > 80
Energy class: G

DIMMER
N / A

CANOPY
N / A

CORD MATERIAL AND COLOUR
Black PVC cord with matte rubber coating and black plug.

CORD LENGTH
200 cm / 78,7"

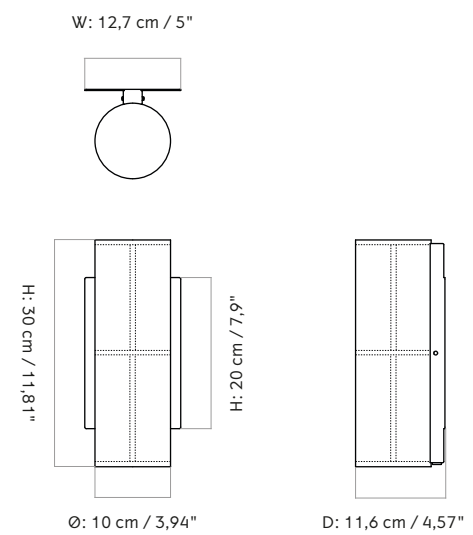
CLASSIFICATION
IP20, Class II

CERTIFICATIONS
CE and ETL certified, tests can be obtained upon request.

PACKAGING TYPE
Gift box

PACKAGING MEASUREMENTS (H x W x D)
N / A

MATERIALS & MAINTENANCE
Please visit [menuspace.com](https://www.menuspace.com) for materials and care and maintenance instructions.





Hashira Floor Lamp

BY NORM ARCHITECTS

Translucent, cylindrical fabric shade with metal frame, textile cord and dimmer switch.

PRODUCT OPTIONS



White
1501059



Raw
1501699



Hashira Floor Lamp

BY NORM ARCHITECTS

TECHNICAL SPECIFICATIONS

PRODUCT TYPE
Floor lamp

COLLI
1

ENVIRONMENT
Indoor

DIMENSIONS
H: 83 cm / 32,7"
Ø: 30 cm / 11,8"

PRODUCTION PROCESS
Welded steel frame with a hand-made shade and sandblasted wood base.

COLOUR
White, ash
Raw, stained oak

MATERIALS
Steel, linen, PS plastic, ash
Thickness of line may vary giving a slightly different light.

WEIGHT
6,51 kg / 14,35 lb

VOLTAGE
CE: 220-230 V
US: 110-130 V

LIGHT SOURCE & ENERGY EFFICIENCY CLASS
E27 (CE) - 2 pcs
E26 (US) - 2 pcs
Max 40 Watt

LIGHT SPECIFICATION
Bulbs not included.

DIMMER
Yes, on cord.

CANOPY
N / A

CORD MATERIAL AND COLOUR
Black textile, black plug.

CORD LENGTH
300 cm / 118"

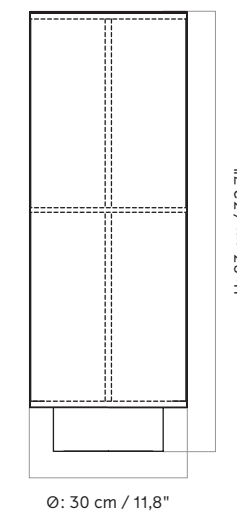
CLASSIFICATION
IP20, Class II

CERTIFICATIONS
CE and ETL certified, tests can be obtained upon request.

PACKAGING TYPE
Brown box

PACKAGING MEASUREMENTS (H x W x D)
37 cm x 37 cm x 88 cm / 14,6" x 14,6" x 34,6"

MATERIALS & MAINTENANCE
Please visit menuspace.com for materials and care and maintenance instructions.





Hashira Floor Lamp, High

BY NORM ARCHITECTS

Set on an elegant powder-coated steel foot for an elevated and airy expression, the Japanese-inspired Hashira High Floor Lamp by Norm Architects illuminates spaces with soft light, elegantly diffused through its tactile fabric shade.

PRODUCT OPTIONS



White
1507059



Raw
1507699



Hashira Floor Lamp, High

BY NORM ARCHITECTS

TECHNICAL SPECIFICATIONS

PRODUCT TYPE
Floor lamp

WEIGHT
N / A

CANOPY
N / A

COLLI
1

VOLTAGE
CE: 220-230 V
US: 110-130 V

CORD MATERIAL AND COLOUR
Black textile, black plug.

ENVIRONMENT
Indoor

LIGHT SOURCE & ENERGY EFFICIENCY CLASS
E27 (CE) - 2 pcs
E26 (US) - 2 pcs

CORD LENGTH
220 cm / 86"

DIMENSIONS
H: 130 cm / 51,1"
Ø: 30 cm / 11,8"

Max 40 Watt

CLASSIFICATION
IP20, Class II

PRODUCTION PROCESS
Laser cut and welded steel frame with a hand-made shade.

LIGHT SPECIFICATION
Bulbs not included.

CERTIFICATIONS
CE and ETL certified, tests can be obtained upon request.

COLOUR
Raw, stained oak
Black (RAL 9005)

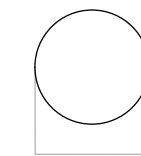
DIMMER
N / A

PACKAGING TYPE
Brown box

MATERIALS
Powder coated steel, linen, PS plastic.

PACKAGING MEASUREMENTS (H x W x D)
N / A

MATERIALS & MAINTENANCE
Please visit [menuspace.com](https://www.menuspace.com) for materials and care and maintenance instructions.



Ø: 30 cm / 11,81"

