

# HD Wireless Presentation System

Model: WHD-PRO2T-K



1080P Wireless HDMI Transmission

## INTRODUCTION

Thank you for purchasing Trans WHD-PRO2T-K Wireless Presentation System. WHD-PRO2T-K is an ideal solution for Bring Your Own Device (BYOD) meeting.

It supports multiple platforms including iOS, Android, Mac, and Windows operating systems for productive and flexible presentations and collaboration from individual devices.

It also enables powerful 2 way split-screen sharing, making it useful and for ideas sharing and on-screen comparisons.

A wireless connection to a shared display from participants' seats will also remove the need for complex configuring and cabling.

You can share BYOD content effortlessly with just one click in huddle rooms and many other types of meeting spaces

## FEATURES AND CONTENTS

### Features:

- Supports wireless transmission of HDMI up to 1080p
- 2-to-1 split-screen display at same time.
- Plug and Play-No App required, quick click to cast wirelessly
- Supports iOS \ Android \ MAC \ Windows system for notebooks, tablets and smart phones.
- Wifi display support
- Wireless connectivity in up to 100ft (30 meters) (L.O.S)
- Up to 32 wireless transmitters with one receiver ( Additional TX required)
- Latency : 200ms max.

### Package Contents:

- 2 x WHD-PRO2T-K Transmitter main unit
- 1 x WHD-PRO2T-K Receiver main unit
- 2x HDMI A-A cable
- 1x DC 5V/2A power adaptor
- User Manual

## CONNECTION & OPERATION

### Transmitter Box

Top	I/O Descriptions	LED Indication
		<p>Main Button / LED</p> <p>Side Button / LED</p>

### Receiver Box

Top	I/O Descriptions	LED Indication
		<p>POWER LAN USB 5G</p>

## Transmitter LED Status

	Activate Host Standby w/o source input		Activate Guest Standby w/o source input
	Activate Host & in projecting		Host received request of projection
	Guest standby w/o projecting		Host standby w/o projecting
	Guest send request of projection and wait for allow		1. Under connection 2. Pairing/TX OTA 3. Fail to connection (blinking over 1minutes)
	Activate Guest & in projecting		Pairing done
	Transmitter OTA Completed		Transmitter OTA Fail

## Installation

### Transmitter connection

**Step1:** Use the HDMI A-A cable connect with WHD-PRO2T-K Transmitter and Source device (Laptop, Notebook)

**Step2:** Connect the USB power cable of WHD-PRO2T-K Transmitter to the USB port of Notebook.

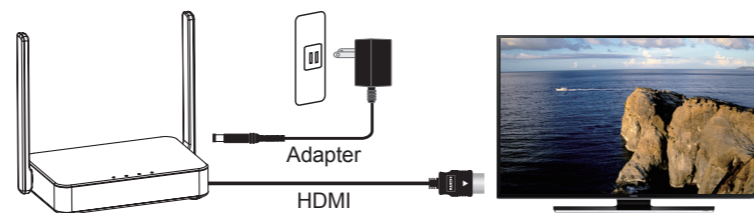
### PC / Laptop



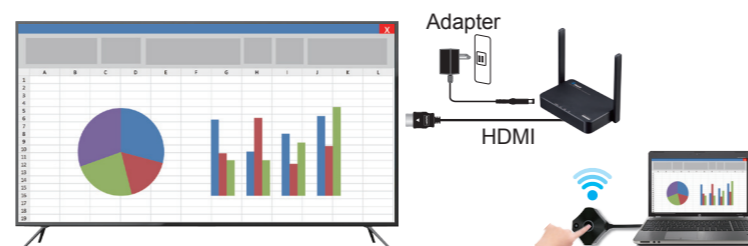
### Receiver connection

**Step3:** Use HDMI cable to connect the HDMI OUT of WHD-PRO2T-K receiver to a display device (HDTV, Projector).

**Step4:** Connect DC 5V/2A power adaptor to the Power Jack of WHD-PRO2T-K Receiver.



**Step5:** Connection completed .When the receiver and transmitter are ready simply press the main button on the transmitter to mirror your device. Single click for mirror or disconnect.



**Note :** The receiver and transmitters have finished the pairing setup before delivery. If no video signal on your display,. Please do the pairing Setup again by Plugging in transmitter's USB cable to receiver USB port. (Follow the pairing instructions described in Pairing of TX and RX )

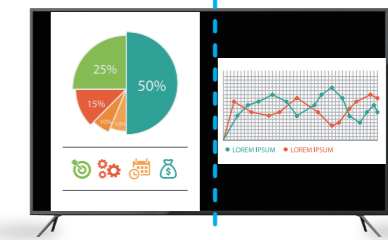
## Additional Transmitter connection

For second transmitter (optional) connection, please follow step 1 & 2.

- For 2-to-1 split-screen display at same time.



- Supports iOS \ Android \ MAC \ Windows system for pc, notebooks, tablets and smart phones.



**Notice:** If the HDMI cable is not long enough, please use extension cable to ensure the connection.

## Transmitter Operation

Main Button (Mirror button)	Host	Guest
Single click	Mirror/Disconnect	Send mirror request
Hold for 3 seconds	Full screen mirror	Send full screen mirror request

Side button (control button )	Host	Guest
Single click	Allow guest to mirror	—
Double click	Deny request	—
Hold for 3 seconds	Quit all display	—

## Main Screen of RX

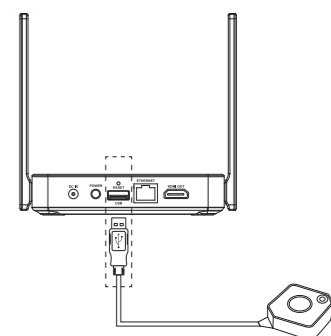
When WHD-PRO2T-K RX is successfully turned on, the screen will be shown on display



\*Outbound link can select only one of Wi-Fi and RJ45 wire line (LAN).

## PAIRING of TX & RX

1. When WHD-PRO2T-K RX is successfully turned on, the screen will be shown on display
2. Connect the end of the Transmitter USB-A cable to the USB port on the back of the Receiver, and it will automatically enter the Pairing mode
3. At this time, the display screen will display "Pairing..." Enter the automatic pairing connection, Sometime later display "Pairing OK".



## Setup screen mirroring with mobile devices for receiver

The receiver is connected to a screen or projector via HDMI for a wireless presentation. You can also cast your content via wifi display.

Use your device's own built-in screen mirroring function. You do not require the WHD-PRO2T-K transmitter. Connect with WHD-PRO2T-K RX with SSID & Password directly.

1. SSID: Selecting the SSID **WHD-PRO2T-K** in the device's Wi-Fi list
2. Password: Entering the password **12345678** to connect your device with WHD-PRO2T-K Receiver.



## Web Setting

\***WHD-PRO2T-K RX IP**- when Devices (either laptops or mobile phones) connect with WHD-PRO2T-K RX with SSID & Password first, applying the IP in web browser can enter Admin setting page for more advance setting.

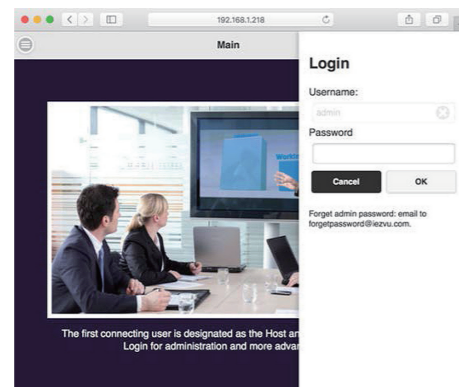
1. Preparation-  
To access the setting page, you have to choose either way to connect the devices.
  - 1.1 Direct link- you can apply notebook or mobile phone to search WHD-PRO2T-K by wifi and key in relative SSID and Password. Turn on web browser and enter "192.168.168.1" in the address bar.
  - 1.2 Through Wifi AP or Routers- if your WHD-PRO2T-K RX has been connected to a certain networking device, you can apply notebook or mobile phone to connect the same device. Turn on web browser and enter the address show in mainpage in the WHD-PRO2T-K IP shown below.



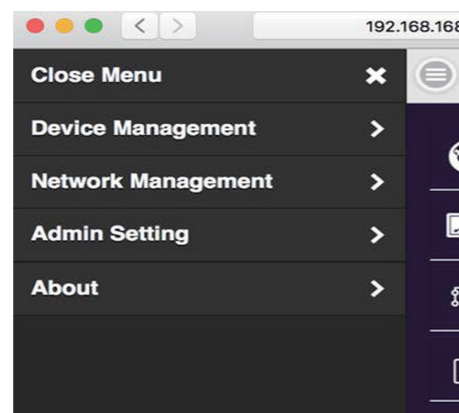
After connecting to RX and open the IP, please log in Admin for more advanced settings.

2. Log in:  
If you are not logging in, you will only be able to use 3~4 items without the Admin setting in the setup menu.

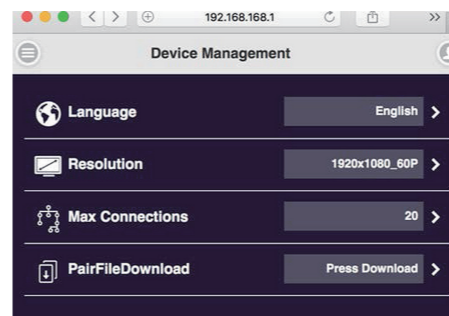
\*Please be noted the default password is "000000", after logging in 1st time, you will be requested to change the log-in password. Please keep it carefully, if you forget the password, please hold the reset button for 10 secs to reset to default.



3. Menu setup:
  - 3.1 Click the menu button and you will find several items to set: **Device Management, Network Management, Admin Setting, and About**. You can also **download Android APK** here.



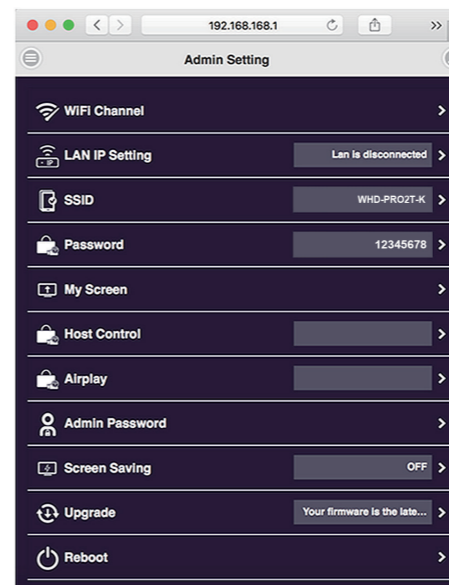
4. Device Management:  
This section helps to manage web page language, Rx's output resolutions, Max connections and WHD-PRO2T-K Receiver & Transmitter pairing file download.



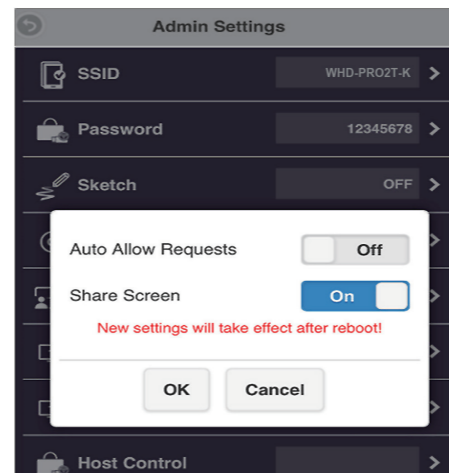
5. Network Management:  
Connect the outbound Wi-Fi router. If you turn off remember WiFi, the outbound WiFi setting and password will not be kept for auto connection.



6. Admin Setting:  
you can adjust Wifi Channel, setup Ethernet IP, Host control  
Change SSID, password and background picture or all other system parameters here. WHD-PRO2T-K provides users with various custom configurations.



1. **Host Control:** Admin can control other casting devices.
  - ◆ Turn on mode : other devices can cast content to output screen directly.
  - ◆ Turn off mode : the host (the first connected TX, with side bottom LED in green color )can allow or deny other guest's mirror request. The original factory setting is at off mode.
2. **Share Screen:** Once turned on, based on the number of connected devices, the output screen will be split into one-half .



## Trouble shooting

No.	Problem	Solution
1.	No video output	<ul style="list-style-type: none"> <li>• Make sure all cables are firmly inserted into the input/output ports</li> <li>• Try use another HDMI cable.</li> </ul>
2.	Transmitter failed to start up or turns on and off repeatedly	<ul style="list-style-type: none"> <li>• Check the power supply. The Transmitter requires a USB 5 V above 0.9 A power to start up .Connection to a USB 3.0 port or other USB power adapters is recommended for sufficient power.</li> </ul>

3.	Your screen is not shown on the display when pressing the bottom.	<ul style="list-style-type: none"> <li>• You are the third person that wants to share the content to the display.</li> </ul> <p>The first or second user has to push his button to remove his content so that a third user can share his content. (Max 2-split screen allowed)</p>
4.	Poor Wi-Fi connectivity	<ul style="list-style-type: none"> <li>• Please try to minimize interference from other wireless device or heavy power consumption house ware (ex. Wi-Fi Router, Microwave, air conditioner...).</li> <li>• Avoid covering the Transmitter and Receiver by any objects.</li> </ul>

## Specification

Output Resolution	1920x1080@60Hz
I/O	HDMI out USB type A DC 5V Ethernet
WiFi	802.11ac
WiFi Frequency	5Ghz: 5.150Ghz~5.825Ghz
Power	RX:DC 5V, 2A / TX:5V, 0.9A
HDCP	HDCP1.3
Ethernet	10/100/1000M
LED Indication	Power, Ethernet, WiFi status, USB
Key	Reset button
Power Consumption	10W max.

## NOTICE

- Manufacturer reserves the right to make changes in the hardware, packaging and any accompanying documentation without prior written notice.
- The terms HDMI and HDMI High-Definition Multimedia Interface, and the HDMI Logo are trademarks or registered trademarks of HDMI Licensing Administrator, Inc. in the United States and other countries.
- WHD-PRO2T-K incorporates HDMI® technology and Soft App powered by Ezcast .
- Trademarks and brand names are the properties of their respective owners.

## FCC STATEMENT

This device complies with part 15 of the FCC Rules. Operation is subject to the following two conditions:

- (1) This device may not cause harmful interference, and
- (2) This device must accept any interference received, including interference that may cause undesired operation.

NOTE: This equipment has been tested and found to comply with the limits for a Class B digital device, pursuant to part 15 of the FCC Rules. These limits are designed to provide reasonable protection against harmful interference in a residential installation.

This equipment generates, uses and can radiate radio frequency energy and, if not installed and used in accordance with the instructions, may cause harmful interference to radio communications. However, there is no guarantee that interference will not occur in a particular installation.

If this equipment does cause harmful interference to radio or television reception, which can be determined by turning the equipment off and on, the user is encouraged to try to correct the interference by one or more of the following measures:

- Reorient or relocate the receiving antenna.
- Increase the separation between the equipment and receiver.
- Connect the equipment into an outlet on a circuit different from that to which the receiver is connected.
- Consult the dealer or an experienced radio/TV technician for help.

Changes or modifications not expressly approved by the party responsible for compliance could void the user's authority to operate the equipment.