



UHD-402MV

4K@60Hz 4x2 Multiviewer
Seamless UHD Video
Matrix Switcher

*Follow us on Youtube
and Facebook*



USER MANUAL

www.orei.com

Table of Contents

Introduction	04
Features	05
Package Contents	06
Specifications	07
Operation Controls and Functions	09
IR Remote	13
EDID Settings	14
Video & Audio	15
Multiview	16
OSD Menu Navigation	17
Controller Software Operation Guide	20
RS-232 Command	27
Application Example	38

Thank you for purchasing this product

Thank you for purchasing this product. For optimum performance and safety, please read these instructions carefully before connecting, operating or adjusting this product. Please keep this manual for future reference.

Surge protection device recommended

This product contains sensitive electrical components that may be damaged by electrical spikes, surges, electric shock, lightning strikes, etc. Use of surge protection systems is highly recommended in order to protect and extend the service life of your equipment.

Registration Page

Please Activate your warranty by registering our product through the link below - www.orei.com/register

Technical Support

Need Help?

Our experienced Technical Support Team is here for you to answer your questions, give technical advice or help troubleshoot your project to get you installed on time and on budget. Call, email or chat with us now.

OREI Live Technical Support Hours

US team (US/Canada/Mexico): Monday-Friday, 9 a.m. - 6 p.m. Central Time

Support Email - info@orei.com | **Support Number** - 877-290-5530

Or

Chat Live on www.orei.com

Send us an instant message now. Our Technical Support Team will respond momentarily. Available during live support hours.

Introduction

The UHD-402MV was developed for the purpose of supporting higher output resolution (4K@60) for multiple sources on two screens. It can accept 4 HDMI input digital sources and combine four video signals onto two HDMI UHD or HD monitors independently. Users can manage each input, and create combinations of the four inputs on two displays, as well as adjust the position of any input.

This product supports 8 display modes, within the mode range, users can freely switch between 4-channel HD input signals. It can display a single source or a multiview display on a single screen.

This product supports full range of input video resolutions up to 4K@60 (RB) and audio RCA /Optical de-embedding supported for external audio distribution systems.

This Matrix Switcher can be controlled via front panel buttons, IR remote, OSD menu navigation, controller software, RS-232 commands.



1. HDMI 2.0b, HDCP 2.2 and HDCP 1.x compliant
2. 18Gbps uncompressed bandwidth, input and output resolution up to 4K2K@60 4:4:4
3. HDMI audio formats support LPCM, DD+, DTS, Dolby TrueHD, DTS HD-master pass-through
4. Supports seamless switching between input channels
5. Combined multiple images independent layouts to display on two UHD TVs
6. Up to 8 display modes:
Single, PIP, PBP(1), PBP(2), Triple(1), Triple(2), Quad(1), Quad(2)
7. Audio de-embedding via analog and optical fiber audio ports
8. Control via front panel buttons, IR remote, OSD menu navigation, controller software, RS-232 commands
9. Each output port supports scaler function
10. Supports independent audio selection
11. Advanced EDID management
12. Compact design for easy and flexible installation

Package Contents

1.	UHD-402MV	1 pcs
2.	IR Remote	1 pcs
3.	3pin-3.81mm Phoenix Connector (male)	1 pcs
4.	38KHz IR Wideband Receiver Cable (1.5m)	1 pcs
5.	Mounting Ears	2 pcs
6.	Machine Screws (KM3*4)	4 pcs
7.	12V/2.5A Locking Power Adapter	1 pcs
8.	User Manual	1 pcs

Specifications

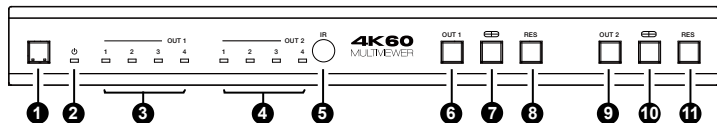
Technical	
HDMI Compliance	HDMI 2.0b
HDCP Compliance	HDCP 2.2/1.x
Video Bandwidth	18Gbps
Video Resolution	Up to 4K2K@60 4:4:4
IR Level	5Vp-p
IR Frequency	38KHz
Color Depth	8/10/12-bit
Color Space	RGB, YCbCr 4:4:4, YCbCr 4:2:2, YCbCr 4:2:0
Audio Formats	HDMI: PCM 2.0/5.1/7.1CH, Dolby Digital/Plus/EX, Dolby True HD, DTS, DTS-EX, DTS-96/24, DTS High Res, DTS-HD Master Audio Analog audio [3.5mm L/R]: PCM 2.0 Optical fiber audio: PCM 2.0/5.1/7.1CH, Dolby Digital/plus, DTS 5.1
ESD Protection	Human body model – ±8kV (Air-gap discharge) & ±4kV (Contact discharge)
Connection	
Input ports	4 × HDMI IN [Type A, 19-pin female]
Output ports	2 × HDMI OUT [Type A, 19-pin female] 2 × L/R OUTPUT [RCA] 2 × OPTICAL OUTPUT [S/PDIF]
Control ports	1 × RS-232 [3pin-3.81mm phoenix connector] 1 × IR EXT [3.5mm Stereo Mini-jack]

Specifications

Mechanical	
Housing	Metal Enclosure
Silkscreen Color	Black
Dimensions	270mm [W] × 130mm [D] × 30mm [H]
Weight	906g
Power Supply	Input: AC 100-240V 50/60Hz Output: DC 12V/2.5A (US/EU standard, CE/FCC/UL certified)
Power Consumption	15.72W (Max)
Operating Temperature	32-104°F / 0-40°C
Storage Temperature	-4-140°F / -20-60°C
Relative Humidity	20-90% RH (Non-condensing)

Operation Controls and Functions

Front Panel



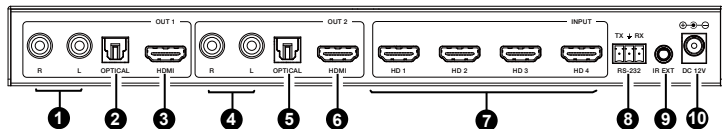
No.	Name	Function Description
1.	Power button	<ul style="list-style-type: none">• Short press this button to turn on the device.• Long press this button for 1 second to enter the standby mode.
2.	Power LED	The Power LED will light up green when the product is powered on, and red when the product is on standby.
3.	Out 1 LEDs (1-4)	<p>Signal source indicator for the HDMI OUT 1 port.</p> <ul style="list-style-type: none">• In single screen display mode, when the HDMI OUT 1 port outputs the signal from the HD 1/2/3/4 port, the corresponding green LED will be on.• In multiview mode, all OUT 1 LEDs will light up green.
4.	Out 2 LEDs (1-4)	<p>Signal source indicator for the HDMI OUT 2 port.</p> <ul style="list-style-type: none">• In single screen display mode, when the HDMI OUT 2 port outputs the signal from the HD 1/2/3/4 port, the corresponding green LED will be on.• In multiview mode, all OUT 2 LEDs will light up green.
5.	IR Window	IR signal receiving window.

Operation Controls and Functions

No.	Name	Function Description
6.	OUT 1 button	Input source switching button for the HDMI OUT 1 port, only available in single screen display mode.
7.	OUT 1 Multiview button	Multiview display mode switching button for the HDMI OUT 1 port. <ul style="list-style-type: none">• Short press this button to circularly select: Single-PIP-PBP(1)-PBP(2)-Triple(1)-Triple(2)-Quad(1)-Quad(2)-single.• Long press this button for 3 seconds to switch the aspect ratio (16:9/Full) for PBP (1) / PBP (2) / Triple (1) / Triple (2) / Quad (1) / Quad (2).
8.	OUT 1 RES button	Output resolution switching button for the HDMI OUT 1 port. <ul style="list-style-type: none">• Short press the RES button, the OSD will display the current output resolution of the HDMI OUT 1 port. Short press the RES button again before the OSD disappears to circularly switch the output resolution (Please refer to the output resolution list of "Video & Audio").• Long press the RES button for 3 seconds to switch the output resolution to 720P60.
9.	OUT 2 button	Input source switching button for the HDMI OUT 2 port, only OUT 2 button available in single screen display mode.
10.	OUT 2 Multiview button	Multiview display mode switching button for the HDMI OUT 2 port. <ul style="list-style-type: none">• Short press this button to circularly select: Single-PIP-PBP(1)-PBP(2)-Triple(1)-Triple(2)-Quad(1)-Quad(2)-single.• Long press this button for 3 seconds to switch the aspect ratio (16:9/Full) for PBP (1) / PBP (2) / Triple (1) / Triple (2) / Quad (1) / Quad (2).
11.	OUT 2 RES button	Output resolution switching button for the HDMI OUT 2 port. <ul style="list-style-type: none">• Short press the RES button, the OSD will display the current output resolution of the HDMI OUT 2 port. Short press the RES button again before the OSD disappears to circularly switch the output resolution (Please refer to the output resolution list of "Video & Audio").• Long press the RES button for 3 seconds to switch the output resolution to 720P60.

Operation Controls and Functions

Rear Panel

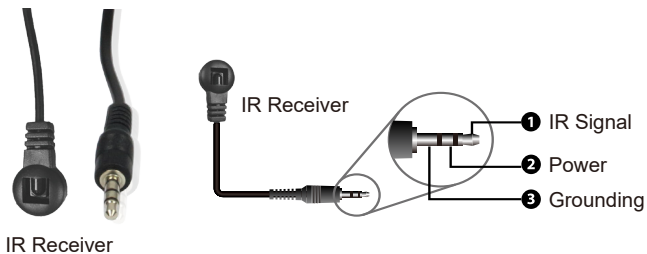


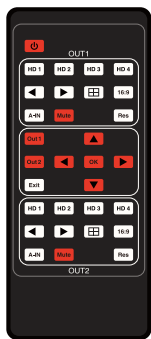
No.	Name	Function Description
1	L/R OUT 1	PCM 2.0 analog audio output port.
2	OPTICAL OUT 1	Optical fiber digital audio output port.
3	HDMI OUT 1	HDMI signal output port, connected to HDMI display device such as TV or Monitor with HDMI cable.
4	L/R OUT 2	PCM 2.0 analog audio output port.
5	OPTICAL OUT 2	Optical fiber digital audio output port.
6	HDMI OUT 2	HDMI signal output port, connected to HDMI display device such as TV or Monitor with HDMI cable.
7	HD 1-4 INPUT ports	HDMI signal input ports, connected to HDMI source device such as DVD or set-top box with HDMI cable.
8	RS-232 port	3-pin phoenix connector, connected to a PC or control system for serial port upgrade or RS-232 command control.
9	IR EXT port	IR signal receiving port, connected with 38KHz IR receiver cable. If the IR signal receiving window of the unit is blocked or the unit is installed in a closed area out of infrared line of sight, the IR receiver cable can be inserted to the "IR EXT" port to receive the IR remote signal.
10	DC 12V	DC 12V/2.5A power input port.

Operation Controls and Functions

IR Pin Definition

IR Receiver pin's definition is as below:





16:9:

Press this button to switch the aspect ratio (16:9/Full) for PBP (1) / PBP (2) / Triple (1) / Triple (2) / Quad (1) / Quad (2) display mode.

A-IN:

Press this button to pop up the audio channel selection OSD, then press the ▲/▼ button to select the audio output channel. (The output audio follows the video source by default.)

Mute:

Press this button to mute / unmute the audio.

Res:

Output resolution switching button.

- Short press the RES button to circularly switch the output resolution of the HDMI OUTPUT port (Please refer to the output resolution list of "Video & Audio").
- Long press the RES button for 3 seconds to switch the output resolution to 720P60.



Press this button to power on the product or set it to standby mode.

HD 1/2/3/4:

Press these buttons to select input source in single screen display mode, and the corresponding input LED on the front panel will light in green.



Press these buttons to circularly select the last or next input source in single screen display mode.



Multiview display mode switching button.

Short press this button to circularly select: SINGLE - PIP - PBP (1) - PBP (2) - Triple (1) - Triple (2) - Quad (1) - Quad (2).

EDID Settings

Out 1:

Press this button to enter the OSD menu of the HDMI OUT 1 port, and set the corresponding function by pressing ▲/▼/◀/▶/OK button.

Out 2:

Press this button to enter the OSD menu of the HDMI OUT 2 port, and set the corresponding function by pressing ▲/▼/◀/▶/OK button.

Exit:

Press this button to exit the OSD settings layer by layer.

EDID Settings

Users can select following EDID modes via RS-232 commands or OSD menu navigation or controller software.

No.	EDID Mode	No.	EDID Mode
1.	4K2K60_444, Stereo Audio 2.0	11.	1680x1050, Stereo Audio 2.0
2.	4K2K60_444, Dolby/DTS 5.1	12.	1600x1200, Stereo Audio 2.0
3.	4K2K60_444, HD Audio 7.1	13.	1440x900, Stereo Audio 2.0
4.	4K2K30_444, Stereo Audio 2.0	14.	1360x768, Stereo Audio 2.0
5.	4K2K30_444, Dolby/DTS 5.1	15.	1280x1024, Stereo Audio 2.0
6.	4K2K30_444, HD Audio 7.1	16.	1024x768, Stereo Audio 2.0
7.	1080P, Stereo Audio 2.0	17.	720p, Stereo Audio 2.0
8.	1080P, Dolby/DTS 5.1	18.	AUTO
9.	1080P, HD Audio 7.1	19.	USER1
10.	1920x1200, Stereo Audio 2.0		

Video & Audio

The switcher supports multiple resolution video input up to 3840×2160@60, and supports multiple audio formats (PCM 2.0/5.1/7.1CH, Dolby Digital/Plus/EX, Dolby True HD, DTS, DTS-EX, DTS-96/24, DTS High Res, DTS-HD Master Audio) pass-through function via HDMI cable.

The switcher supports following video output resolutions via a powerful scaling engine.

No.	Output Resolution	No.	Output Resolution
1.	4096×2160p 60Hz	8.	1920×1080p 60Hz
2.	4096×2160p 50Hz	9.	1920×1080p 50Hz
3.	3840×2160p 60Hz	10.	1360×768p 60Hz
4.	3840×2160p 50Hz	11.	1280×800p 60Hz
5.	3840×2160p 30Hz	12.	1280×720p 60Hz
6.	3840×2160p 25Hz	13.	1280×720p 50Hz
7.	1920×1200p 60Hz RB	14.	1024×768 60Hz

Multiview

The switcher supports 8 categories of multiview display modes:

SINGLE, PIP, PBP (1), PBP (2), Triple (1), Triple (2), Quad (1), Quad (2)

Users can select different operations for different Multiview modes as following:

SINGLE: Inputs selection

PIP: Inputs selection, Sub window size and position selection

PBP (1), PBP (2), Triple (1), Triple (2), Quad (1), Quad (2): Inputs selection, Display mode selection, Display aspect selection

Multiview window distributions are as following:



User can select multiview display modes via RS-232 commands, OSD menu navigation or controller software.

OSD Menu Navigation

(1) A total of eight buttons on the IR Remote are used for OSD menu navigation, including OUT 1, OUT 2, Exit, ▲, ▼, ◀, ▶, OK.

Menu contents are as follows:

Output	Resolution	3840×2160p60	4096×2160p 60Hz/ 4096×2160p 50Hz/ 3840×2160p 60Hz/ 3840×2160p 50Hz/ 3840×2160p 30Hz/ 3840×2160p 25Hz/ 1920×1200p 60Hz RB/ 1920×1080p 60Hz/ 1920×1080p 50Hz/ 1360×768p 60Hz/ 1280×800p 60Hz/ 1280×720p 60Hz/ 1280×720p 50Hz/ 1024×768 60Hz
	VKA	BLACKSCREEN	BLACKSCREEN, BLUE- SCREEN
	ITC	OFF	ON, OFF

OSD Menu Navigation

Multiview	Single	Input select	HDMI1, HDMI2, HDMI3, HDMI4
	PIP	Win1 Select	HDMI1, HDMI2, HDMI3, HDMI4
		Win2 Select	HDMI1, HDMI2, HDMI3, HDMI4
		PIP Position	Right Bottom, Right Top, Left Bottom, Left Top
		PIP Size	Small, Middle, Large
	PBP	Win1 Select	HDMI1, HDMI2, HDMI3, HDMI4
		Win2 Select	HDMI1, HDMI2, HDMI3, HDMI4
		MODE	1, 2
		Aspect	Full, 16:9
	3xWIN	Win1 Select	HDMI1, HDMI2, HDMI3, HDMI4
		Win2 Select	HDMI1, HDMI2, HDMI3, HDMI4
		Win3 Select	HDMI1, HDMI2, HDMI3, HDMI4
		MODE	1, 2
		Aspect	Full, 16:9
	4xWIN	Win1 Select	HDMI1, HDMI2, HDMI3, HDMI4
		Win2 Select	HDMI1, HDMI2, HDMI3, HDMI4
		Win3 Select	HDMI1, HDMI2, HDMI3, HDMI4
		Win4 Select	HDMI1, HDMI2, HDMI3, HDMI4
		MODE	1, 2
		Aspect	Full, 16:9

OSD Menu Navigation

AUDIO	Audio Select	WIN1	WIN1, HDMI1, HDMI2, HDMI3, HDMI4
	AUDIO-MUTE	OFF	ON, OFF
System	Language/语言	English	English, 中文
	EDID	4K60-2.0	4K60-2.0, 4K60-5.1CH, 4K60-7.1CH, 4K30-2.0CH, 4K30-5.1CH, 4K30-7.1CH, 1080P-2.0CH, 1080P-5.1CH, 1080P-7.1CH, 1920×1200-2.0CH, 1680×1050-2.0CH, 1600×1200-2.0CH, 1440×900-2.0CH, 1360×768-2.0CH, 1280×1024-2.0CH, 1024×768-2.0CH, 720P-2.0CH, AUTO, USER1
	Baud rate	115200	115200, 57600, 38400, 19200, 9600
	Reset	Reset	Reset
	FW Version		Read only

(2) A total of two buttons on the IR Remote are used for audio setting on OSD menu navigation, including A-IN, Mute.

Menu contents are as follows:

A-IN	Audio Input	WIN1	WIN1, HDMI1, HDMI2, HDMI3, HDMI4
Mute	Audio Mute	OFF	ON, OFF

Controller Software Operation Guide

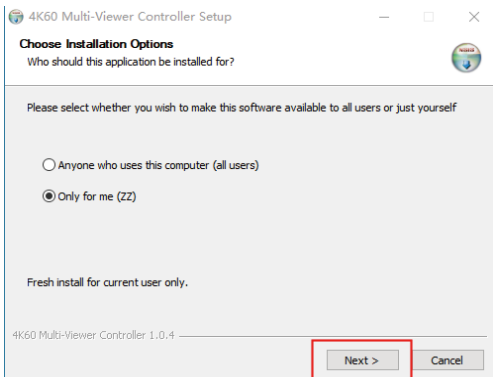
Installation & Connection

Follow the steps below to install the Controller software.

Step 1. Double-click the following driver to install the Controller software.

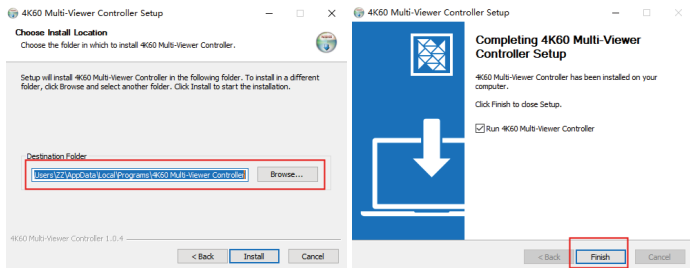


Step 2. Select “Anyone who uses this computer (all users)”, and then click “Next”.



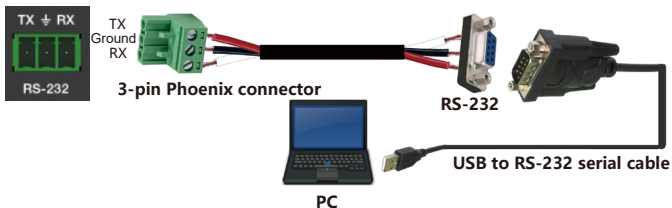
Step 3. Select the installation path and click “Install”. After the installation is completed, click “Finish” to start using the Controller software.

Controller Software Operation Guide



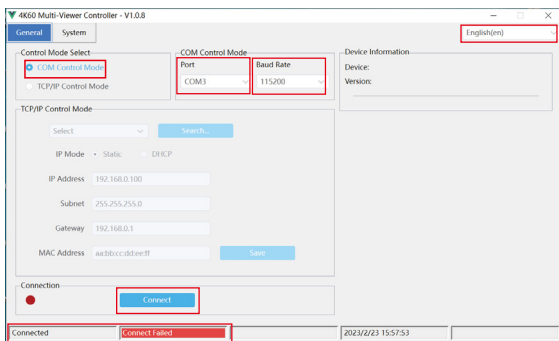
Follow the steps below to connect the Controller software and the device.

Step 1. Connect the RS-232 port of the switcher to a PC with an RS-232 serial cable and an USB to RS-232 serial cable, as shown in the figure below.



Controller Software Operation Guide

Step 2. Launch the installed Controller software. (The default language is English, and you can set the language in the upper right corner of the main page.) Select “COM Control Mode” on the “General” page, then select the Port number and Baud Rate (default: 115200), and finally click “Connect”.

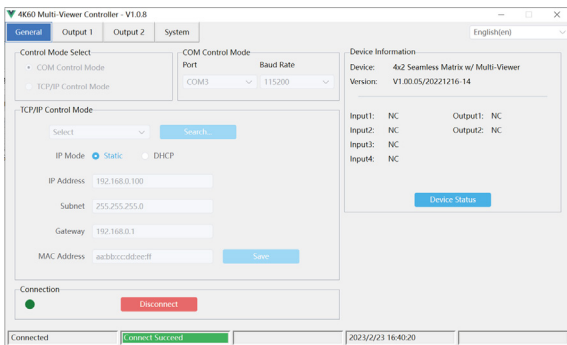


After successful connection, the “General” page will display the relevant information of the connected device, and the status bar at the bottom will display “Connected”.

Controller Software Operation Guide

Controller Main Interface

■ General Page

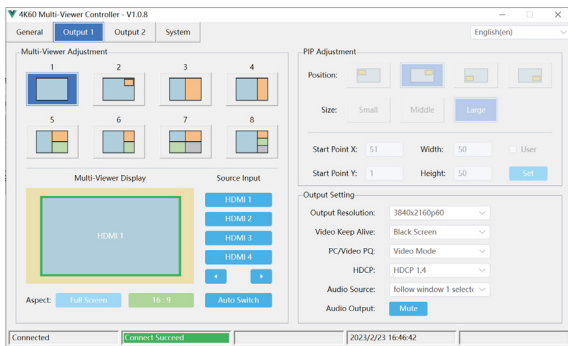


You can do the following operations on the General page:

- ① **Control Mode Select:** Select the "COM Control Mode". (TCP/IP control is not supported temporarily, so the TCP/IP Control Mode is disabled.)
- ② **COM Control Mode:** Select the Port number and Baud Rate of the device.
- ③ **Device Information:** Display the device name, version and input/output connection status. Click "Device Status" to refresh the device status.
- ④ **Connection:** Click to set the connection status.
- ⑤ **Connected:** Display the connection status.

Controller Software Operation Guide

■ Output Page



You can do the following operations on the Output page:

- ① **Multi-View Adjustment:** Click to select the desired screen display mode. There are eight modes available: SINGLE-PIP-PBP(1)-PBP(2)-Triple(1)-Triple(2)-Quad(1)-Quad(2).
- ② **PIP Adjustment:** In the PIP mode, you can switch the location and size of the PIP and set the user-defined PIP, as shown in the following table.

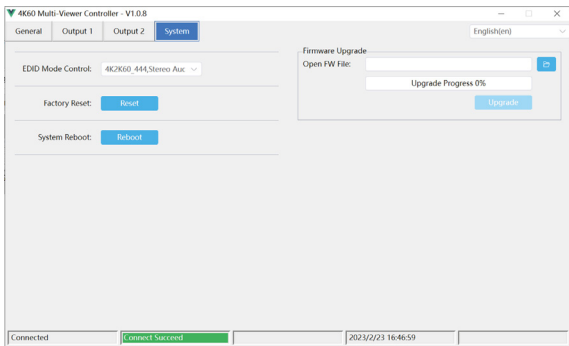
Controller Software Operation Guide

Size	Relative Position (Starting Position)	Height and Width of the Inner Frame
Small	Start Point X: 71 Start Point Y: 71	Width: 30 Height: 30
Middle	Start Point X: 61 Start Point Y: 61	Width: 40 Height: 40
Large	Start Point X: 51 Start Point Y: 51	Width: 50 Height: 50
User	Start Point X: 1-100 Start Point Y: 1-100	Width: 1-100 Height: 1-100

- ③ **Multi-Viewer Display:** Display the input and output.
- ④ **Source Input:** Select the input signal source. You should select the window in "Multi-Viewer Display" firstly, and then click "HDMI 1/2/3/4" in "Source Input" to select a signal source, or click ◀/▶ to select the last/next signal source.
- ⑤ **Aspect:** Click "Full Screen" or "16:9" to switch the display aspect.
Only the following modes are available: PBP(1)-PBP(2)-Triple(1)-Triple(2)-Quad(2).
- ⑥ **Auto Switch:** Enable or disable the function of automatically switching input signal source, available only in SINGLE mode.
- ⑦ **Output Setting:** Set the output resolution, video keep alive, PC/Video PQ, HDCP, audio source and audio output.

Controller Software Operation Guide

■ System Page



You can do the following operations on the System page:

- ① **EDID Mode Control:** Click the drop-down list on the right to select EDID mode.
- ② **Firmware Upgrade:** Click the folder icon on the right to import the firmware upgrade file, then click “Upgrade” to start upgrade. There will be a progress bar prompt during the upgrade process. When the progress bar reaches 100%, it indicates the upgrade is successful, and the device will be restarted automatically.
- ③ **Factory Reset:** Click “Reset” to reset the device to factory default settings.
- ④ **System Reboot:** Click “Reboot” to reboot the device.

RS-232 Command

The product also supports RS-232 command control. Connect the RS-232 port of the product to a PC with a 3-pin phoenix connector cable. Then, open a Serial Command tool on PC to send ASCII commands to control the product. The ASCII command list about the product is shown as below.

ASCII Commands				
Serial port protocol: baud rate: 115200(default) Data bits: 8 Stop bits: 1 Check bit: 0				
x - Parameter 1; y - Parameter 2; ! - Delimiter				
Command Code	Function Description	Example	Feedback	Default
System Setting				
help!	Lists all commands	help!		
r type!	Get device model	r type!	4x2 HDMI Multiviewer	
r fw version!	Get Firmware version	r fw version!	MCU FW version x.xx.xx SCALER FW version x.xx.xx	
power z!	Power on/off the device.z=0~1 (z=0 power off, z=1 power on)	power 1!	Power on System Initializing... Initialization Finished! MCU FW version x.xx.xx SCALER FW version x.xx.xx	
r power!	Get current power state	r power!	power on/power off	
reboot!	Reboot the device	reboot!	Reboot... System Initializing... Initialization Finished! MCU FW version x.xx.xx SCALER FW version x.xx.xx	
reset!	Reset to factory defaults	reset!	Reset to factory defaults System Initializing... Initialization Finished! MCU FW version x.xx.xx SCALER FW version x.xx.xx	

RS-232 Command

Command Code	Function Description	Example	Feedback	Default
Output Setting				
s output y res x!	Set Output y Resolution (y=1-2, x=1-14) y=1. output 1 y=2. output 2 1. 4096x2160p60, 2. 4096x2160p50, 3. 3840x2160p60, 4. 3840x2160p50, 5. 3840x2160p30, 6. 3840x2160p25, 7. 1920x1200p60RB, 8. 1920x1080p60, 9. 1920x1080p50, 10.1360x768p60, 11.1280x800p60, 12.1280x720p60, 13.1280x720p50, 14. 1024x768p60.	s output 1 res 3!	output 1 resolution: 3840x2160p60	3840x2160p60
r output y res!	Get output y resolution (y=1-2) 1. output 1 2. output 2	r output res!	output 1 resolution: 3840x2160p60	
s output hdcp x!	set output hdcp (y=1-2, x=1-3) y=1. output 1 y=2. output 2 x=1. HDCP 1.4 x=2. HDCP 2.2 x=3. HDCP OFF	s output 1 hdcp 2!	output 1 HDCP: HDCP 1.4	HDCP 1.4
r output y hdcp!	Get output y hdcp status. (y=1-2) 1. output 1 2. output 2	r output 1 hdcp!	output 1 HDCP: HDCP 1.4	

RS-232 Command

Command Code	Function Description	Example	Feedback	Default
Output Setting				
s output y vka x!	Set output video keep active pattern. (y=1-2, x=1-2) y=1. output 1 y=2. output 2 x=1. black screen x=2. blue screen	s output 1 vka 1!	output 1 VKA pattern: black screen	black screen
r output y vka!	Get output y video keep active pattern. (y=1-2) 1. output 1 2. output 2	r output 1 vka!	output 1 VKA pattern: black screen	
s output y itc x!	Set output video mode (y=1-2, x=1-2) y=1. output 1 y=2. output 2 x=1: video mode x=2: pc mode	s output 1 itc 1!	output 1 ITC: video mode	video mode
r output y itc!	Get output video mode (y=1-2) 1. output 1 2. output 2	r output 1 itc!	output 1 ITC: video mode	

RS-232 Command

Command Code	Function Description	Example	Feedback	Default
EDID Setting				
s input EDID x!	Set HDMI input EDID mode (x=1-19) 1. 4K2K60_444,Stereo Audio 2.0 2. 4K2K60_444,Dolby/DTS 5.1 3. 4K2K60_444,HD Audio 7.1 4. 4K2K30_444,Stereo Audio 2.0 5. 4K2K30_444,Dolby/DTS 5.1 6. 4K2K30_444,HD Audio 7.1 7. 1080P,Stereo Audio 2.0 8. 1080P,Dolby/DTS 5.1 9. 1080P,HD Audio 7.1 10. 1920x1200,Stereo Audio 2.0 11. 1680x1050,Stereo Audio 2.0 12. 1600x1200,Stereo Audio 2.0 13. 1440x900,Stereo Audio 2.0 14. 1360x768, Stereo Audio 2.0 15. 1280x1024,Stereo Audio 2.0 16. 1024x768, Stereo Audio 2.0 17. 720p,Stereo Audio 2.0 18. AUTO 19. USER1	s input EDID 1!	input EDID:4K2K60_444, Stereo Audio 2.0	4K2K60_444,Stereo Audio 2.0
r input EDID!	Get input EDID mode	r input EDID!	input EDID:4K2K60_444, Stereo Audio 2.0	
s edid user1 00 FF FF ...!	Set user1 EDID data	s edid user1 00 FF FF FF FF ...!	user1 EDID data: 00 FF FF ...	
r edid user1!	Get user1 EDID data	r edid user1!	user1 EDID data: 00 FF FF FF FF FF FF 00	

Command Code	Function Description	Example	Feedback	Default
Audio Setting				
s output y audio x!	Set output y audio source (y=1-2, x=0-4) y=1. output 1 y=2. output 2 x=0. follow window 1 selected source x=1. HDMI 1 input audio x=2. HDMI 2 input audio x=3. HDMI 3 input audio x=4. HDMI 4 input audio	s output 1 audio 0!	output 1 audio follow window 1 video source	output audio: follow window 1 selected source
r output y audio!	Get output y audio source (y=1-2) 1. output 1 2. output 2	r output 1 audio!	output 1 audio follow window 1 video source	
s output y audio mute x!	Set output audio mute on/off (x=0-1, y=1-2) y=1. output 1 y=2. output 2 x=0. mute off x=1. mute on	s output 1 audio mute 0!	output 1 audio mute off	off
r output y audio mute!	Get output y audio mute on/off (y=1-2) 1. output 1 2. output 2	r output 1 audio mute!	output 1 audio mute off	

RS-232 Command

Command Code	Function Description	Example	Feedback	Default
Single Screen Mode Setting				
s output y auto switch x!	Enable/disable auto switch feature (y=1~2,x=0~1) y=1. output 1 y=2. output 2 0. Disable auto switch 1. Enable auto switch	s output 1 auto switch 0!	output 1 auto switch off	auto switch off
r output y auto switch!	Get output y auto switch feature (y=1~2) 1. output 1 2. output 2	r output 1 auto switch!	output 1 auto switch off	
s output y in source x!	Route input source to output y (y=1~2, x=1~4) y=1. output 1 y=2. output 2 x=1. HDMI 1 x=2. HDMI 2 x=3. HDMI 3 x=4. HDMI 4	s output 1 in source 1!	output 1 in source: HDMI 1	HDMI 1
r output y in source!	Get output y selected input source (y=1~2) 1. output 1 2. output 2	r output 1 in source!	output 1 in source: HDMI 1	
Multi-viewer Mode Setting				
s output y multiview x!	Set output y multi-viewer display mode (y=1~2, x=1~5) y=1. output 1 y=2. output 2 x=1. single screen x=2. PIP x=3. PBP x=4. triple screen x=5. quad screen	s output 1 multiview 1!	output 1 multiview: single screen	single screen

RS-232 Command

Command Code	Function Description	Example	Feedback	Default
r output y multiview!	Get output y multi-viewer display mode (y=1-2) 1. output 1 2. output 2	r output 1 multiview!	output 1 multi-view: single screen	
s output z window x in y!	Select output z one input for one display window for the current Multiview mode. (z=1-2) 1. output 1 2. output 2 (x=1-4) 1. window 1 2. window 2 3. window 3 4. window 4 (y=1-4) 1. HDMI 1 2. HDMI 2 3. HDMI 3 4. HDMI 4	s output 1 window 1 in 1!	output 1: window 1 select HDMI 1	
r output y window x in!	Get output y windows selected input source (y=1-2) 1. output 1 2. output 2 (x=0-4) 0. ALL 1. window 1 2. window 2 3. window 3 4. window 4	r output 1 window 1 in!	output 1 window 1 select HDMI 1	
s output z window x border y!	Set the border mode of the specified window. (z=1-2) 1. output 1 2. output 2 (x=1-4) 1. window 1 2. window 2 3. window 3 4. window 4 (y=0-1) 0. off 1. on	s output 1 window 1 border 1!	output 1 window 1 border on	off

RS-232

Command

Command Code	Function Description	Example	Feedback	Default
r output y window x border!	Get the border mode of windows (y=1-2) 1. output 1 2. output 2 (x=0-4) 0. ALL 1. window 1 2. window 2 3. window 3 4. window 4	r output 1 window 1 border!	output 1 window 1 border on	
s output z window x border color y!	Set the border color of the specified window. (z=1-2) 1. output 1 2. output 2 (x=1-4) 1. window 1 2. window 2 3. window 3 4. window 4 (y=1-9) 1. BLACK 2. RED 3. GREEN 4. BLUE 5. YELLOW 6. MEGENTA 7. CYNA 8. WHITE 9. GRAY	s output 1 window 1 border color 1!	output 1 window 1 border color: BLACK	YELLOW
r output y window x border color!	Get the border color of windows (y=1-2) 1. output 1 2. output 2 (x=0-4) 0. ALL 1. window 1 2. window 2 3. window 3 4. window 4	r output 1 window 1 border color!	output 1 window 1 border color: BLACK	

RS-232 Command

Command Code	Function Description	Example	Feedback	Default
s output y PIP Hstart Vstart Hsize Vsize!	Set PIP window to user define mode (y=1-2) 1. output 1 2. output 2 Hstart=(1-100) Vstart=(1-100) Hsize=(1-100) Vsize=(1-100) NOTE:Hstart+Hsize<=101, Vstart+Vsize<=101	s output 1 PIP 10 10 20 20!	output 1 PIP 10 10 20 20	
s output y PIP position x!	Set output y PIP window position (y=1-2) 1. output 1 2. output 2 (x=1-5) 1. Left Top 2. Left Bottom 3. Right Top 4. Right Bottom 5. user	s output 1 PIP position 3!	output 1 PIP on right top	PIP on right top
r output y PIP position!	Get output y PIP window position (y=1-2) 1. output 1 2. output 2	r output 1 PIP position!	output 1 PIP on right top	
s output y PIP size x!	Get output y PIP window size (y=1-2) 1. output 1 2. output 2 (x=1-4) 1. small 2. middle 3. large 4. user	s output 1 PIP size 3!	output 1 PIP size large	PIP size: large
r output y PIP size!	Get output y PIP window size (y=1-2) 1. output 1 2. output 2	r output 1 PIP size!	output 1 PIP size large	

RS-232

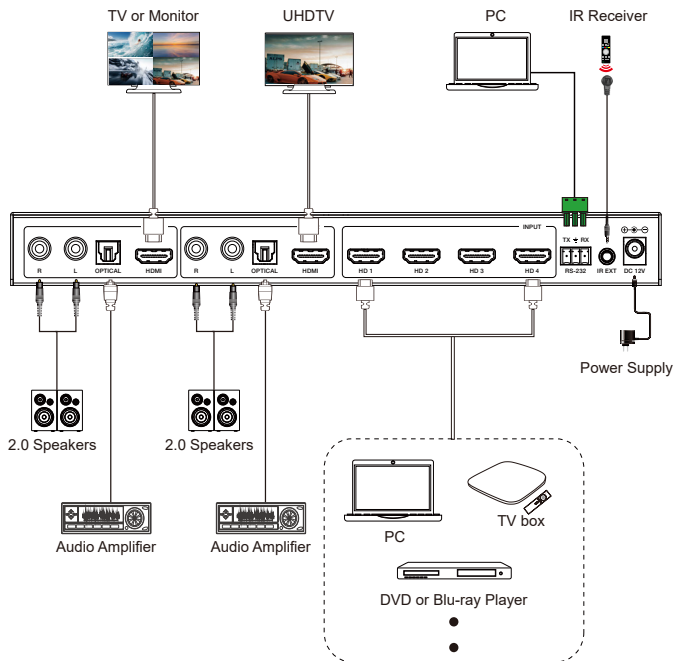
Command

Command Code	Function Description	Example	Feedback	Default
s output y PBP mode x!	Set output y PBP windows display mode (y=1-2) 1. output 1 2. output 2 (x=1-2) 1. PBP mode 1 2. PBP mode 2	s output 1 PBP mode 1!	output 1 PBP mode 1	PBP mode 1
r output y PBP mode!	Get output y PBP windows display mode (y=1-2) 1. output 1 2. output 2	r output 1 PBP mode!	output 1 PBP mode 1	
s output y PBP aspect x!	Set output y PBP windows display aspect ratio (y=1-2) 1. output 1 2. output 2 (x=1-2) 1. Full screen 2. 16:9	s output 1 PBP aspect 1!	output 1 PBP aspect full screen	PBP aspect: full screen
r output y PBP aspect!	Get output y PBP windows display aspect ratio (y=1-2) 1. output 1 2. output 2	r output 1 PBP aspect!	output 1 PBP aspect full screen	
s output y triple mode x!	Set output y triple windows display mode (y=1-2) 1. output 1 2. output 2 (x=1-2) 1. triple mode 1 2. triple mode 2	s output 1 triple mode 1!	output 1 triple mode 1	triple mode 1
r output y triple mode!	Get output y triple windows display mode (y=1-2) 1. output 1 2. output 2	r output 1 triple mode!	output 1 triple mode 1	

RS-232 Command

Command Code	Function Description	Example	Feedback	Default
s output y triple aspect x!	Set output y triple windows display aspect ratio (y=1-2) 1. output 1 2. output 2 (x=1-2) 1. Full screen 2. 16:9	s output 1 triple aspect 1!	output 1 triple aspect full screen	triple aspect: full screen
r output y triple aspect!	Get output y triple windows display aspect ratio (y=1-2) 1. output 1 2. output 2	r output 1 triple aspect!	output 1 triple aspect full screen	
s output y quad mode x!	Set output y quad windows display mode (y=1-2) 1. output 1 2. output 2 (x=1-2) 1. quad mode 1 2. quad mode 2	s output 1 quad mode 1!	output1 quad mode 1	quad mode 1
r output y quad mode!	Get output y quad windows display mode (y=1-2) 1. output 1 2. output 2	r output 1 quad mode!	output1 quad mode 1	
s output y quad aspect x!	Set output y quad windows display aspect ratio (y=1-2) 1. output 1 2. output 2 (x=1-2) 1. Full screen 2. 16:9	s output 1 quad aspect 1!	output 1 quad aspect full screen	quad aspect full screen
r output y quad aspect!	Get output y quad windows display aspect ratio (y=1-2) 1. output 1 2. output 2	r output 1 quad aspect!	output 1 quad aspect full screen	

Application Example





**4K@60Hz 4x2 Multiviewer
Seamless UHD Video Matrix Switcher**

www.orei.com

© 2023