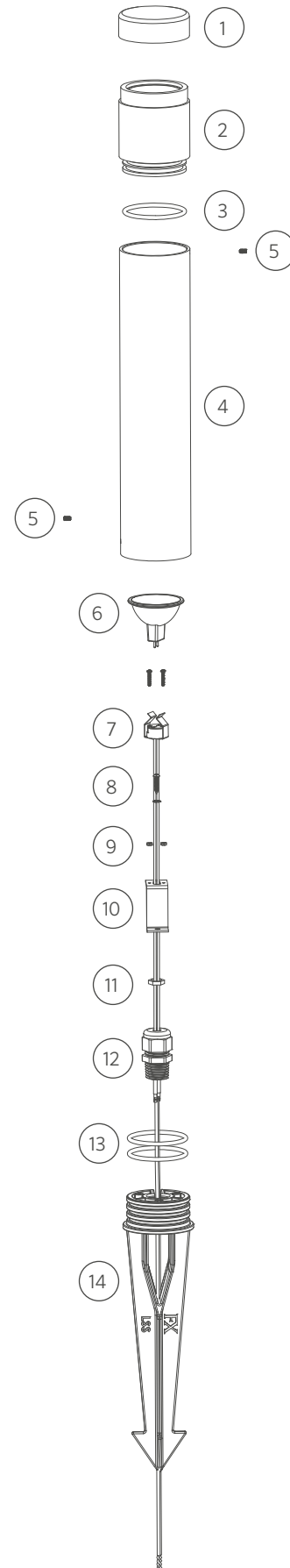


PM

ITEM	DESCRIPTION	CATALOG #
1	Cap	-
2	Lens	-
3	O-Ring	250010280011
1-3	Lens Cap Assembly	PMLCXX*
4	Body	-
5	Screw, #6-32 x 1/4"	250012940000
6	Lamp, MR-16	See Lamp Chart p.138-139
7	Socket, MR-16	761600
8	Screw, #4 x 5/8"	250012990000
9	Washer, Ext Tooth, #4	250012980000
10	Bracket, Lamp	250012960000
11	Nut, Hex 2-56	250014290000
12	Strain Relief Connector	250014400000
13	O-Ring	250010280006
14	Long Slot Spike (LSS)	250015840000
	Hex Key, 1/16" Short Arm	250012950000

*XX = Powder coat color code



PM LED

ITEM	DESCRIPTION	CATALOG #
1	Cap	-
2	Lens	-
3	O-Ring	250010280011
1-3	Lens Cap Assembly	PMLCXX*
4-6	Color Filter	See LED Chart
7-8	Screw, #4-40 x 3/8"	See LED Chart
9-11	Reflector	See LED Chart
12-15	LED Board	See LED Chart
16	Socket, 3-meter	752601
17	Insert	-
18	O-Ring	250010280025
19	Retaining Ring	250019110000
20	Screw, #6-32 x 1/4"	250012940000
21	Body	-
22	O-Ring	250010280006
23	Long Slot Spike (LSS)	250015840000
	Hex Key, 1/16" Short Arm	250012950000

*XX = Powder coat color code

PM LED COMPONENTS

ITEM	DESCRIPTION	CATALOG #
4	1LED Color Filter, Amber	770100
4	1LED Color Filter, Blue	770101
4	1LED Color Filter, Green	770102
5	3LED Color Filter, Amber	770800
5	3LED Color Filter, Blue	770801
5	3LED Color Filter, Green	770802
6	6LED/9LED Color Filter, Amber	771500
6	6LED/9LED Color Filter, Blue	771501
6	6LED/9LED Color Filter, Green	771502
7	1LED/3LED Screw, #4-40 x 3/8" (Qty Req: 2)	762400
8	6LED/9LED Screw, #4-40 x 7/16" (Qty Req: 3)	250014550000
9	1LED Reflector	770000
10	3LED Reflector	770700
11	6LED/9LED Reflector	771400
11	ZDC LED Reflector	250020690000
12	1LED Board	1LEDULKIT [‡]
13	3LED Board	3LEDULKIT [‡]
14	6LED Board	6LEDULKIT [‡]
15	9LED Board	9LEDULKIT [‡]
15	ZDC LED Board	ZDCKITL**

[‡] ZD = Zoneable and dimmable (add ZD to front of part number)

** ZDC kit includes LED board, reflector, screws, and flood lens (9LEDFLENS)

