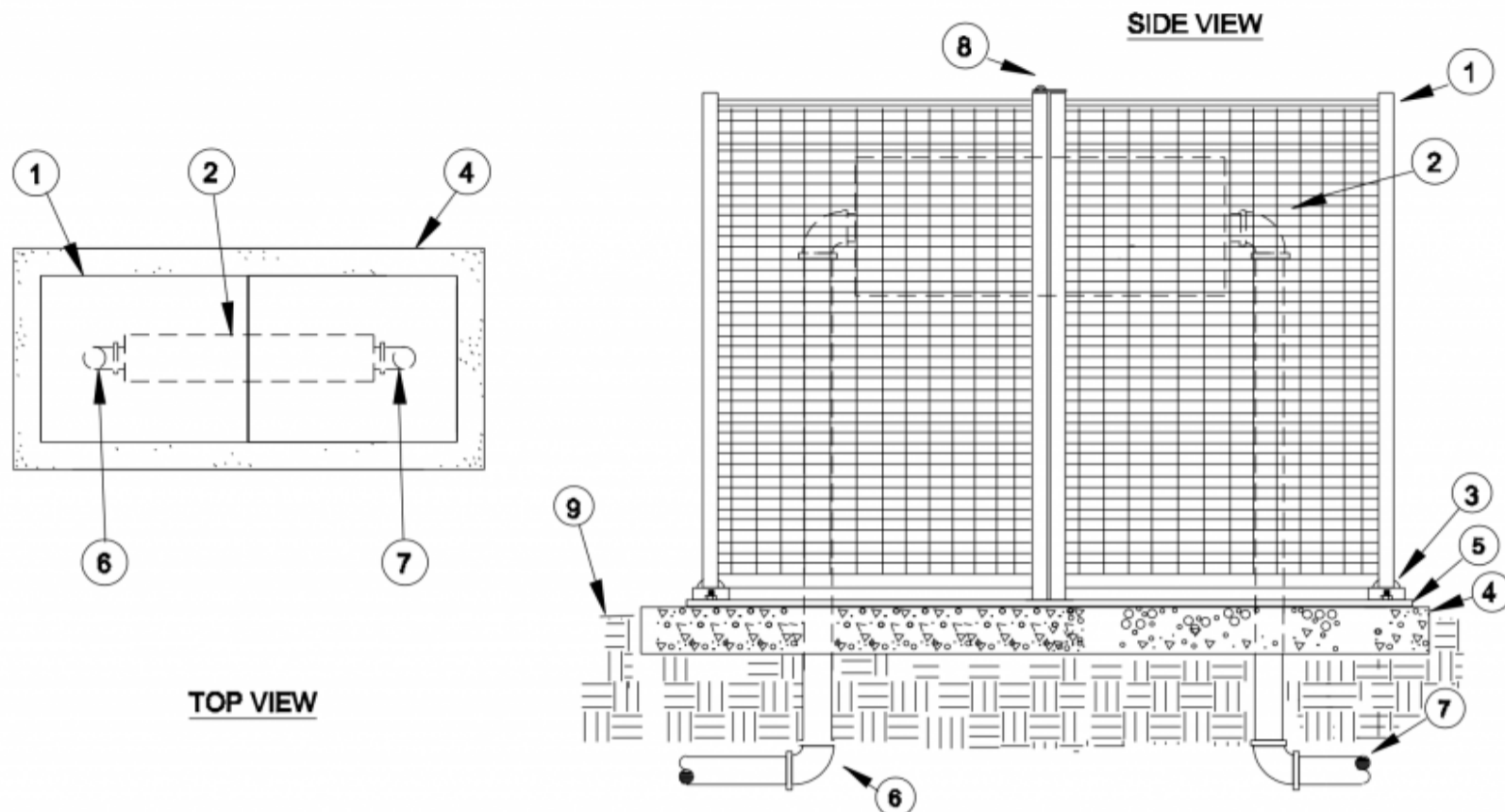


BACKFLOW COVER

MODELS: SBBC-40CR, SBBC-75CR

INSTALLATION DETAILS



1. Smooth Touch Backflow Cover
2. Backflow Preventer
3. Secured Swivel Mounting Plates
4. Poured Concrete Base – 6" minimum thickness – extend 4" beyond outside dimensions of enclosure
5. SBBC Mounting Base – fastened or anchor bolted to concrete

6. Water Service Outlet Piping
7. Water Service Inlet Piping
8. Padlock Locking Hasp
9. Finish Grade

Note: Enclosure shall swivel outward to expose backflow. Backflow cover is secured to base and tools must be used to remove completely.



REQUEST QUOTE

1-800-729-1314

2320 Meyers Ave
Escondido, CA 92029
1-800-729-1314 - Main Office
1-888-310-3946 - Fax

STAINLESS STEEL ENCLOSURES FIND A DISTRIBUTOR
BACKFLOW ENCLOSURES OEM
SERVICE PEDESTALS STRONGBOX
TREE & SPRINKLER NEWS

CAREERS
CONTACT

f in

 UL 508a rating
UL NEMA 3SX and 4X enclosures.



StrongBox is ISO 9001:2015 Certified.

Copyright © 2022, StrongBox. StrongBox is a subsidiary of MUM Industries. | Trademark Information | Privacy Policy | Terms & Conditions