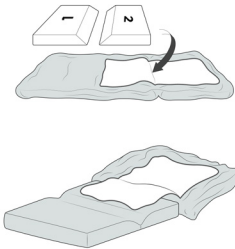


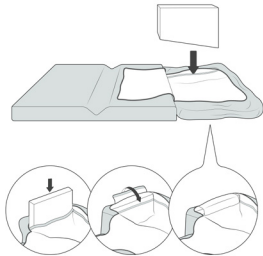
Convertible Sofa

Instructions

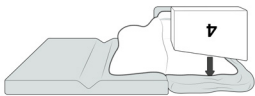
Before assembling, wait 2-3 minutes for all foam parts to fully expand. Foam will continue to expand to its full shape over the next week.



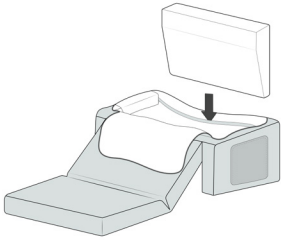
1. Turn your couch cover upside down, with the zipper opening facing up. Unzip the cover. Insert foam #1 into the end of the lounge section with the flat side first. Insert foam #2 right after foam #1 with the angled side first.



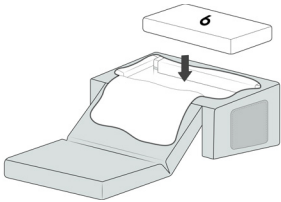
2. Rotate foam #3 with the angled side down, and the smaller side facing foams 1&2. Insert into the side of the couch with the pocket, and secure the velcro.



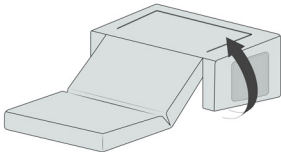
3. Rotate foam #4 with the angled side down, and the smaller side facing foams 1&2. Insert into the opposite side of the couch with no pocket, and secure the velcro.



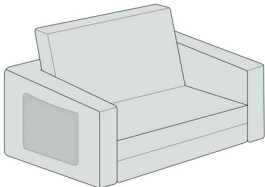
4. Rotate foam #5 so the angled side is facing down, and facing foams 1&2. Insert into the back pocket, and secure the velcro.



5. Insert #6 foam to fit flat as the couch base and zip the full cover closed.



6. Turn the couch upside down, fold the lounge section up, and press the center in to complete the couch.



7. Press and adjust the foam pieces as necessary.

Play time!