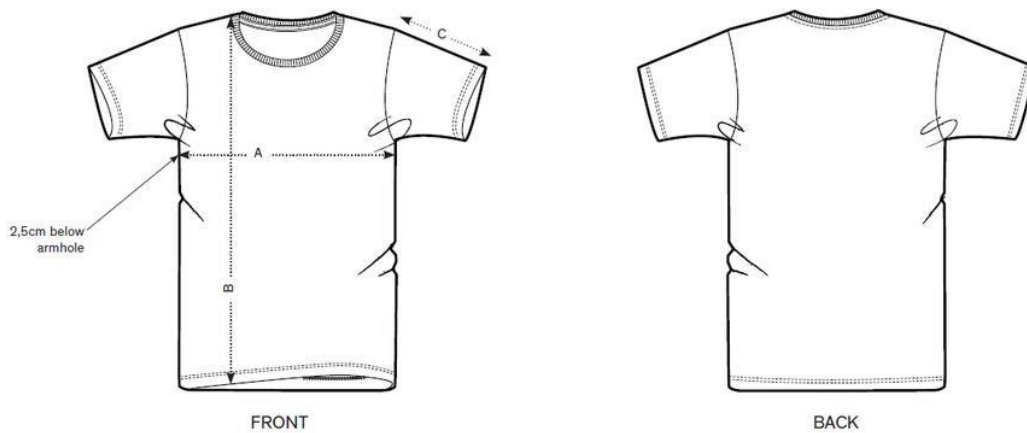


Sizing information:

All our T-shirts and sweaters are available in standard sizes S-XXL (European standards). In order to be of service to you, you can find the specific dimensions of our articles in the tables below. You can also see where the sizes should be measured. If you have any questions on this subject, please contact us through the contact page.

T-shirts:



SIZES	
A	Half Chest 2,5cm below armhole
B	Body Length (from HPS)
C	Sleeve length

S	M	L	XL	XXL
48	51	54	57	60
69,5	71,5	73,5	75,5	77,5
20,5	20,5	21,5	21,5	22,5

Sweaters:

	Sizes	S	M	L	XL	XXL
A	Width (cm)	51	56	61	66	71
B	Lenght (cm)	70	72	75	77	80