

Assembly Instructions

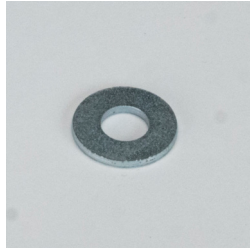
250# Capsule Feeder



(Base, Auger, Auger Tube and Motor not pictured)



(10) Bolt



(10) Small Washer



(1) Coupler



(2) Safety Pin



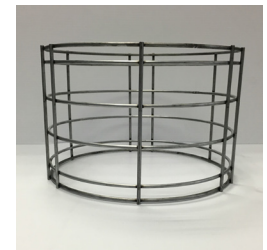
(4) Tire Screws



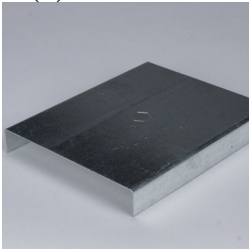
(1) Set Screw



(4) Solar Panel Screw



(1) Metal Cage



(1) Metal Spinner



(1) Solar Panel



(1) Battery



(1) The Timer



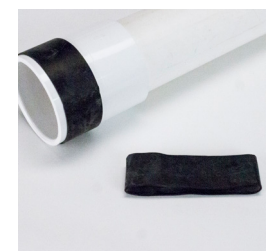
(1) Fill Cap



(1) 24" Auger



(1) Rubber Coupling
on Auger



(1) Rubber Grommet
on PVC

CAP-250 INSTRUCTIONS



Step 1: Place tire on ground.



Step 2: Place base in tire.



Step 3: Attach base to tire.
(4) Tire screws



Step 4: Attach dome to base.
(4) SM Washer
(4) Bolt



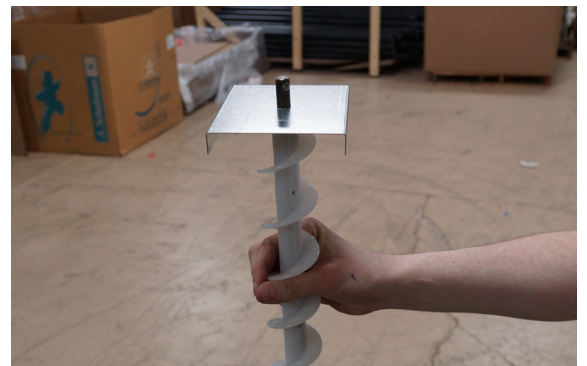
Step 5: Attach fill cap
(2) Wing Nut



Step 6: Place PVC in hole and attach.
(1) Set Screw

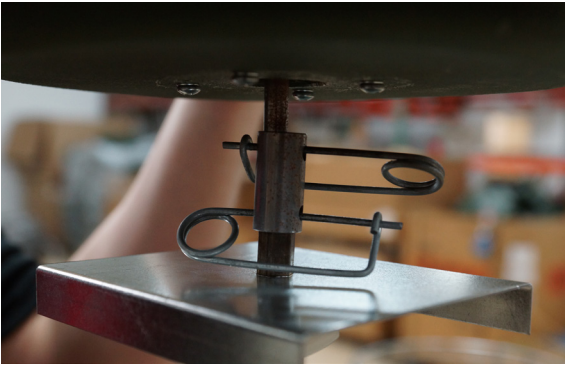


Step 7: Bolt cage to unit.
(3) SM Washer
(3) Bolt



Step 8: Place spinner on top of auger.

CAP-250 INSTRUCTIONS



Step 9: Attach 1 end coupler to motor at-
tach other end to auger. Insert safety pins.



Step 10: Place powerhead on top of cage.



Step 11: Bolt powerhead down.

(3) SM Washer

(3) Bolt

FINAL STEP:

ATTENTION: BEFORE FILLING FEEDER, CONFIRM THERE IS 1-2 INCHES OF AUGER EXPOSED FROM THE BOTTOM OF THE PVC PIPE. IF THERE IS NOT ENOUGH AUGER EXPOSED, CUT OFF THE NECESSARY AMOUNT WITH A HACKSAW.

NOTE: WHEN LOOKING DOWN ON THE FEEDER, THE MOTOR AND AUGER SHOULD BE SPINNING IN A CLOCKWISE DIRECTION. IF SPINNING COUNTER-CLOCKWISE, SIMPLY REVERSE THE WIRES THAT GO DIRECTLY FROM THE MOTOR TO THE TIMER SO THE CONNECTIONS ARE RED TO BLACK AND BLACK TO RED. THIS WILL ALLOW THE AUGER TO SPIN AND PICK UP FEED CORRECTLY.



*** FOR TROUBLE SHOOTING HELP OR TIPS ***

EMAIL US AT - customerservice@opioutdoors.com

CALL US AT – (888) – 507 – 2021

ALL FEEDER PARTS AND ACCESSORIES CAN BE FOUND ON www.capsulefeeders.com

WARNING:

ALWAYS DISCONNECT THE BATTERY BEFORE
SERVICING YOUR FEEDER

CAPSULE CARE TIPS

Periodically run your feeder empty and clean it out around the bottom of the auger.
Corn may contain husk or other debris. Please make sure corn is as clean as possible.
Frequent fillings with fresh, clean corn is recommended.

Symptoms:

Motor attempts to turn but jams or clicks

Cause:

Low batteries or auger obstruction

Fix:

Push the test button. In the bottom right corner of the timer screen it will show the battery indicator. This will indicate the levels of the feeder battery and the timer battery. If the bottom battery level is lowering by more than 3 bars while the feeder is under load, get a new 12v battery. If the top battery level is flashing, change the batteries on the bottom of the timer.

If battery is good disconnect it and try to spin the spinner by hand. If it's difficult or stuck, remove the motor housing & auger. Clear the obstruction. Reassemble and connect the battery.

Symptoms:

Motor goes off but minimal feed is dispensed or not thrown to proper distance.

Cause:

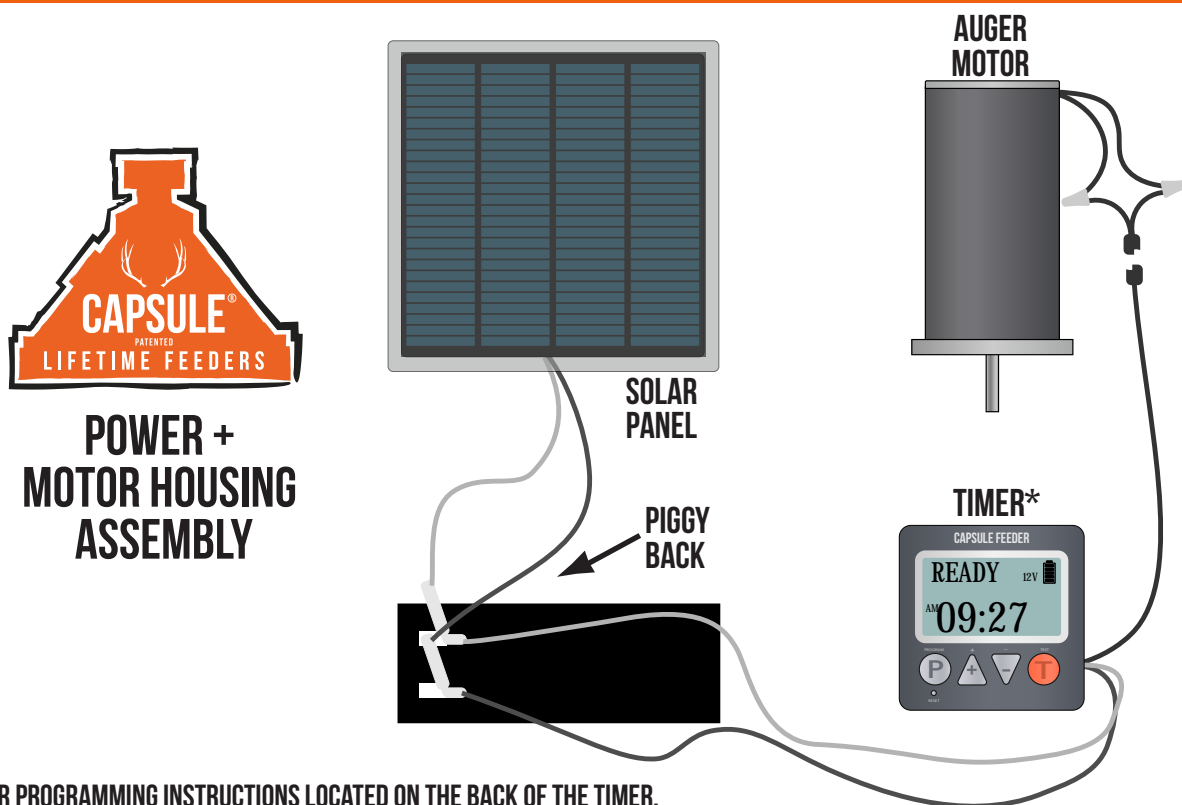
Powder dust build up in the bottom of the feeder reducing auger efficiency. Spinner plate is rounded out and can be turned freely without the auger spinning with it. Auger is worn down or not sticking out of the bottom of the PVC pipe the proper length of 1-2 inches.

Fix:

Remove the battery and timer, take the top half of the feeder and thoroughly clean the bottom. Remove powder and dust build-up.

If problem persists, use hacksaw to trim the necessary amount of PVC pipe off so 1-2 inches of auger is exposed on the bottom of the feeder.

If the feeders is only throwing feed at the base of the feeder, check to make sure the spinner plate is not rounded out and the spinner does not turn freely without the auger spinning. If it turns freely, replace the spinner plate.



*TIMER PROGRAMMING INSTRUCTIONS LOCATED ON THE BACK OF THE TIMER.