



First set tower into main case and install pin provided in accessory box. Please add some grease to the pin before assembly.



Attach the handle with screws provided in tower arm.



Connect the plastic air supply tube to the inner fitting. The 2 fittings require different diameter tube so they can not be mixed up.



Attach the tire inflation box with screws provided in the tower.



Attach the supply line to the second fitting.



Straighten blade and tighten nut just until blade will hold position.



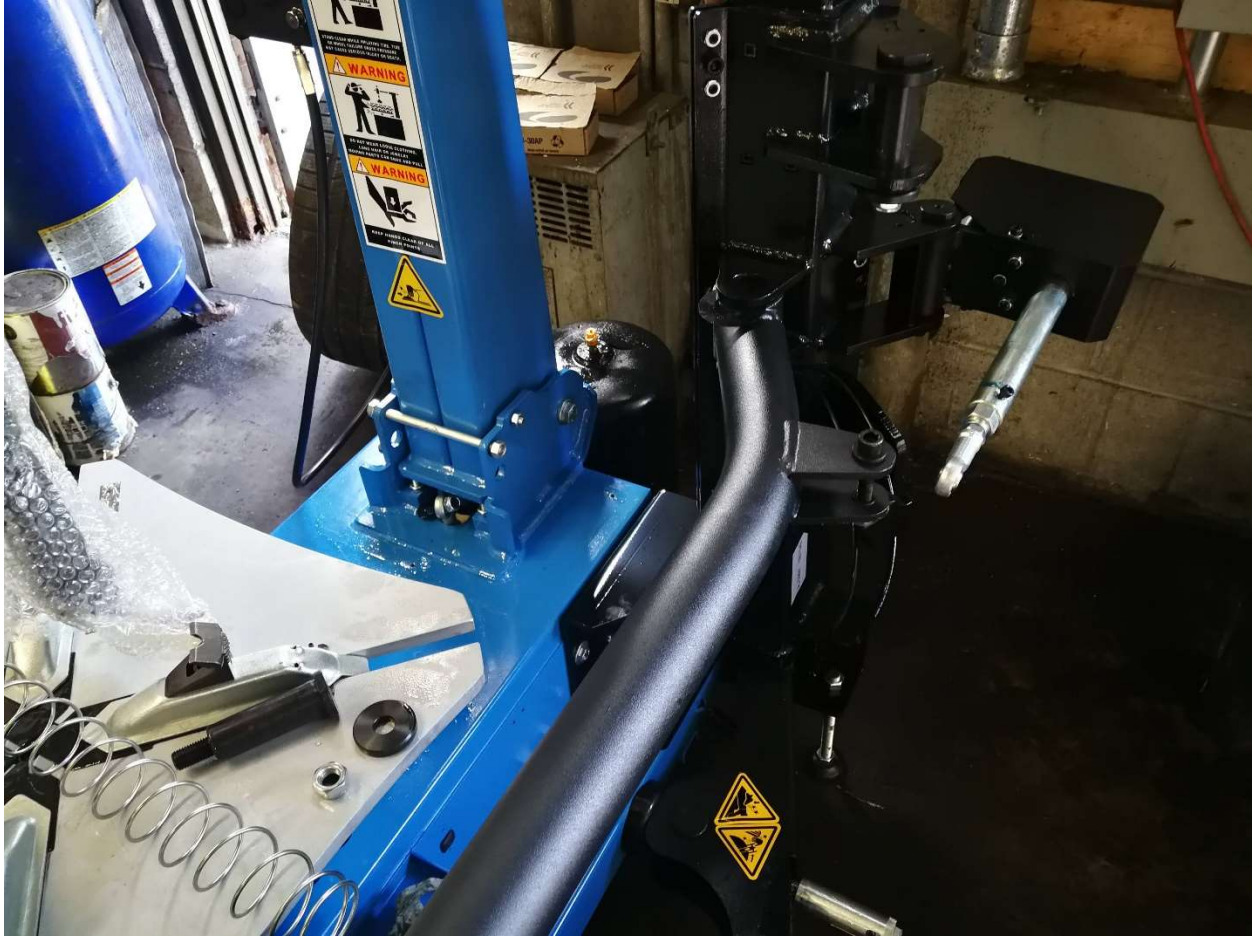
Have assist arm hardware ready. The thicker plate goes on the top of the case and the thin plate goes on the bottom.



Install the anti-tip leg before installing assist arm on the tire changer. It will aid in installation of the assist arm and the machine has to be lifted slightly if installed after arm is installed onto the tire changer.



Install the attachment bolts as seen. First the 2 into the side of the tire changer but do not tighten completely just until arm is touching the case evenly. Then tight the 4 long bolts with plate and nuts underneath tight, then tighten the 2 side case bolts.



Insert the second roller arm with the orange press button as seen into assist arm with pin and shim provided in the assist arm. Please add some grease to the pin before assembly.



Attach the arm lock to the arm as seen.



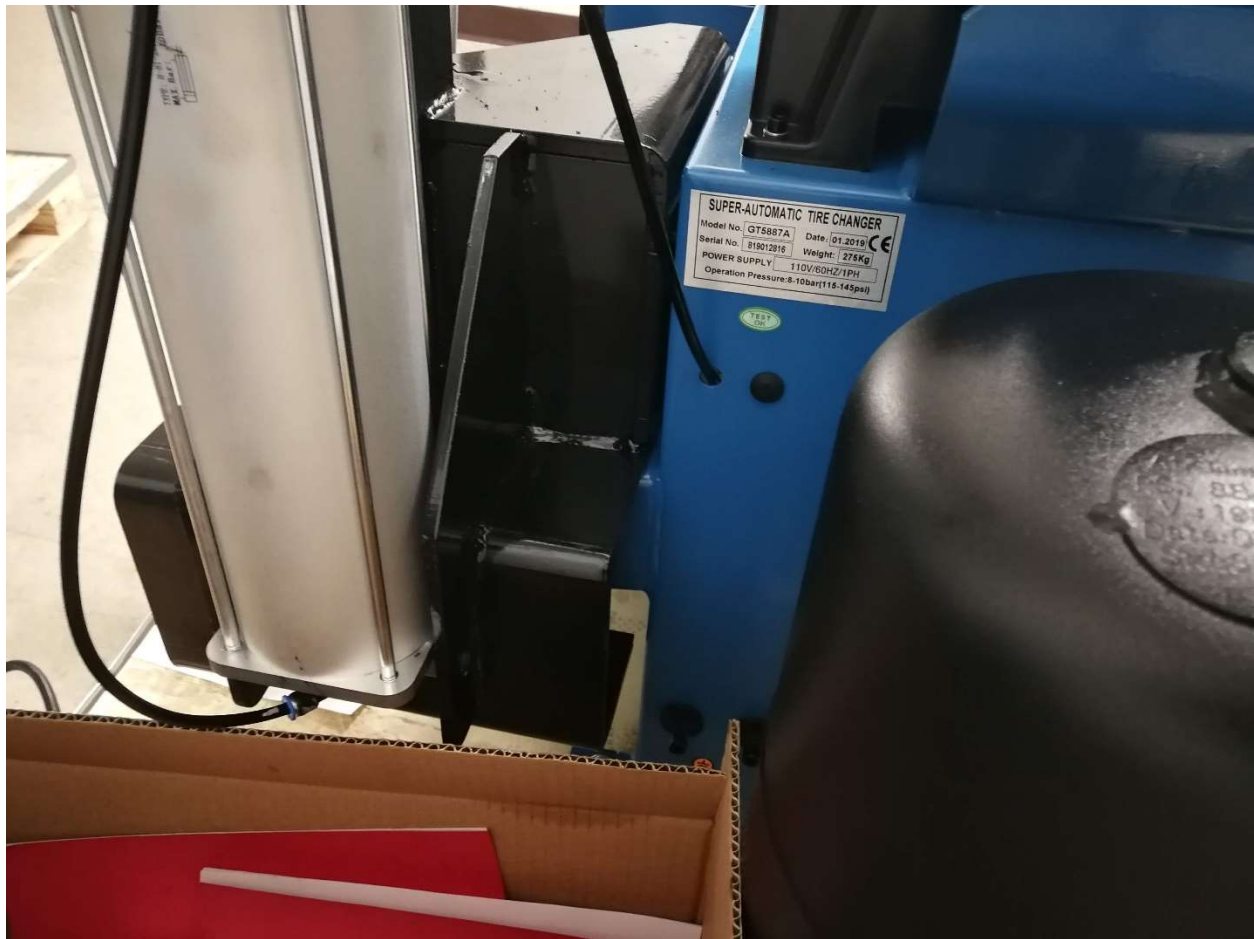
Assemble the following bead assist arm as shown. Please add grease to all joints before assembly. Pin is in the assist arm.



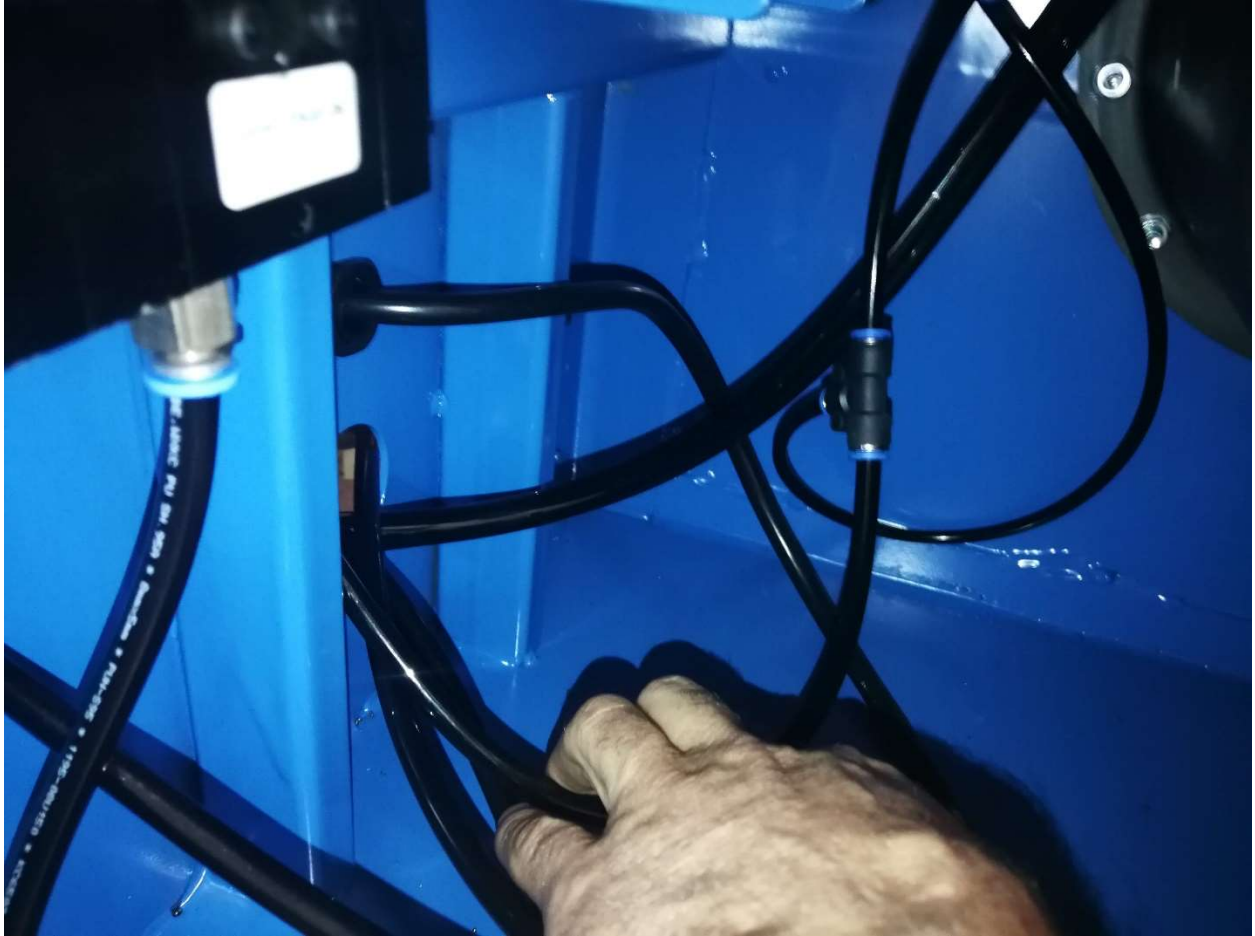
The shorter of the 2 lines on the second roller arm connects to the silver arm lock piston behind the black cover and the longer line connects to the main line harness coming from the joystick control bead following arm. Please check to make sure non of the tubing gets stretched or pinched when routed by moving arms fully in both directions.



Connect the 2 tubes to the assist arm cylinder. The one with the T-fitting on the end is the supply line, do not connect this tube to the cylinder, use the other 2 tubes left on the harness. The shorter one goes to the top of the cylinder.



Remove rubber plug and remove the T-fitting from end of supply line. Route the supply line inside the case as shown.



Locate the line coming into the machine from the oil lubricator and splice in T-fitting to supply the assist arm with oil lubricated air supply. This splice does not have to be done inside the machine and can be done at the back of the machine right at the oil lubricator itself. Be sure not to splice into tire inflation/bead blast supply line coming from in-between air regulator/water separator and the oil lubricator.



The oil lubricator is at the end of where air supply line connects to the tire changer on the back of the machine. Please be sure to fill and maintain oil level in the reservoir with a thin non detergent oil such as SAE30 for long maintenance free life.

Be sure to check and purge any water from water separator before using the machine or daily. Water can be purged at any time even with air line connected by pressing up on yellow button on the bottom of air regulator/water separator. If it will not purge twist button 90 degrees to remove the lockout function. Water damage/lack of oil lubrication is not covered by warranty.

If you have any questions or need any help at all, please do not hesitate to contact our tech support.

www.tirechangermachine.ca