

TOYOTA 100 SERIES LAND CRUISER CENTRAL LOCKING INSTALLATION

**WARNING NOT FOR THE
FAINT HEARTED!!!!**

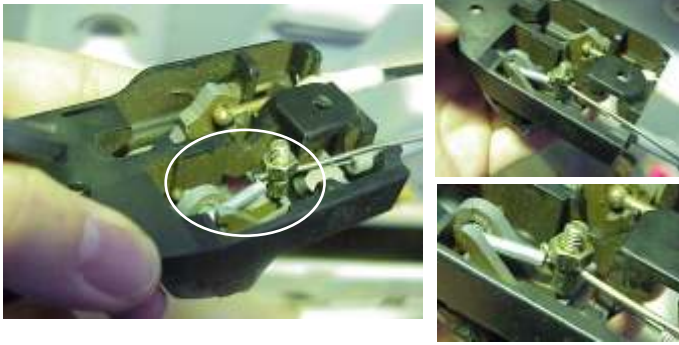
FIRSTLY REMOVE ALL DOOR TRIMS
NOTE

IF YOU HAVE ANY TROUBLE GETTING THE TRIMS OFF, PACK YOUR TOOLS UP AND GO HOME.

Depending on preference you may want to run the wiring loom first so that you can test the set up as you do it. Note you will have to extend the loom motor wires on the 3 passenger doors.

Front Doors

- 1) Unscrew door handle assembly.
- 2) Attach rod to snib lock cable at rear of assembly using split bolt as per.
Kink the cable slightly to allow clearance of plastic housing.



Keep split bolt as close to the ball end of the cable to give max. travel.

- 3) It is necessary to drill a 3/4" hole behind the handle to allow the split bolt to move during operation. Place handle assembly into position and mark position of hole by moving snib lock backwards and forwards a few times.



- 4) Refit handle assembly and check all clearances
- 5) Install door motor as per normal.



FRONT DOORS

REAR DOORS



- 6) Remove white plastic shield
- 7) Attach the two rods using 2 blocks and adjust to give full travel. Beware of Door trim clearance.
- 9) Cut white plastic shield to allow rod to travel and then refit.
- 10) Attach guide loops to stop thin rod flex.
- 11) Test and make sure the key switch also works (See Handy hint "3")

The procedure for the rear doors is the same but there are no plastic shields.

Handy hints.

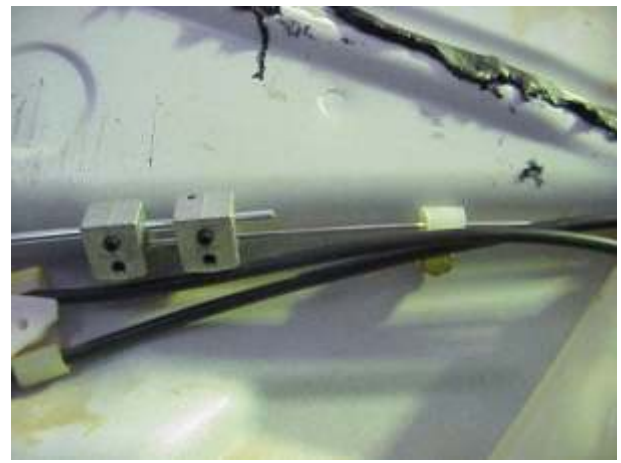
- 1) Only use master motor on drivers door.
- 2) You shouldn't need to cut anything off the standard door rod. If you do you are more likely to have interference from the door trim.
- 3) There is adjustment on the outer cable where it clips into the handle assembly, adjust it out slightly to give a little extra travel for split bolt.
- 4) The kit includes all the hardware necessary for the "unusual" part of the install, it doesn't however contain mechanical ability or common sense.



Please turn over for more details.



Ensure knuckles and nylon guides sit within channel to ensure moving parts have clearance from door trim.



Ensure knuckles and nylon guides sit within channel to ensure moving parts have clearance from door trim.



Ensure knuckles and nylon guides sit within channel to ensure moving parts have clearance from door trim.



Completed front passenger side door.



Completed rear passenger side door.



Finished driver's side front door.



Rod must slide unobstructed into door release handle assembly.



Recess mounting bolts into channels where possible.