

# Installing No Trim Mount Blocks

Angle Bracket

Wood block

## Tools Needed -



Pencil



Level



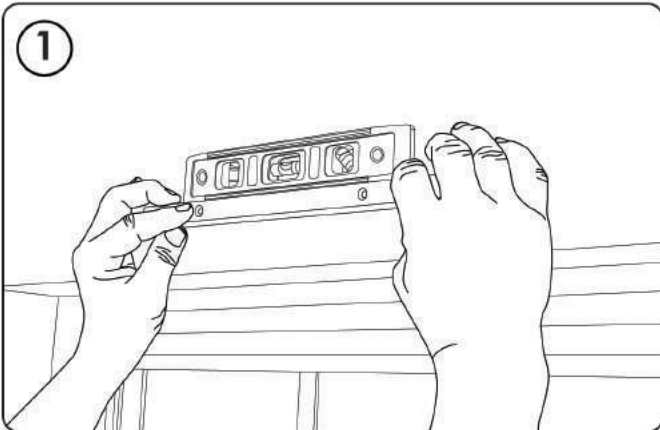
Tape Measure



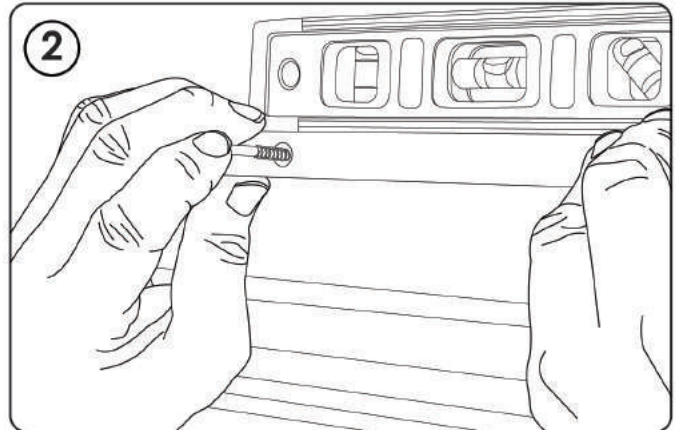
Drill - 1/8" drill bit and philip screw bit



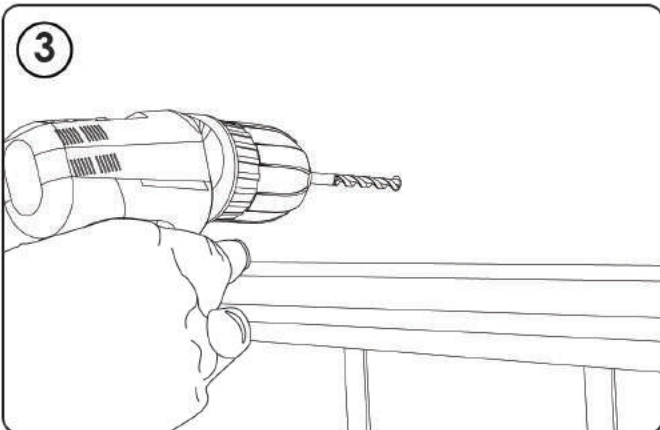
Step Ladder



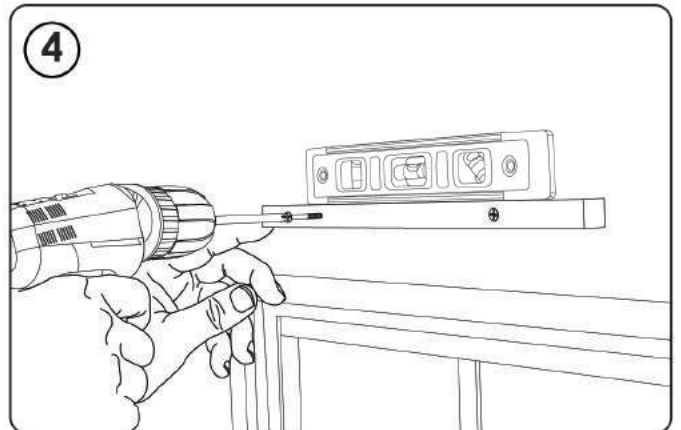
Center the mount about 2" above the window.



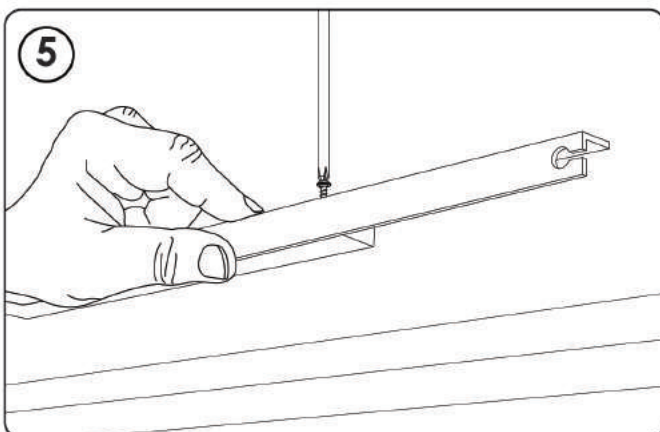
Level the mount and mark the holes on the wall. Pressing the screws or a nail through the hole to mark the wall should work.



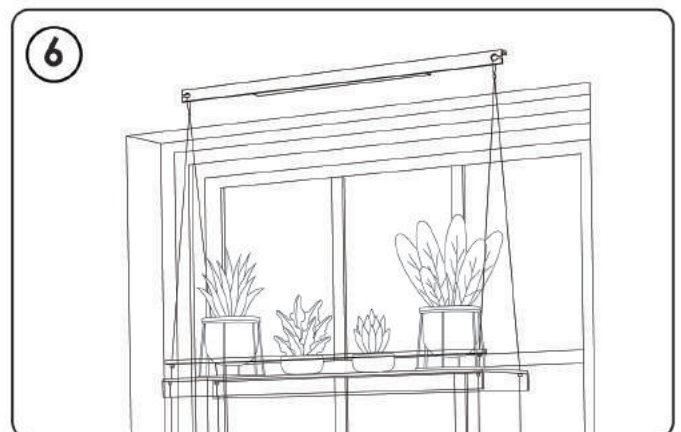
Drill pilot holes for the screws in the spots you marked in STEP 2.



Ensure the mount is level and install the screws.



Use the supplied screws and washers to attach the Angle Bracket to the mounting block.



Insert cable loops into the slots cut into the ends of the Angle Bracket.

# Installing Wall Units



Wall Units

## Tools Needed -



Pencil



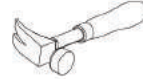
Yard Stick



Tape Measure



Level

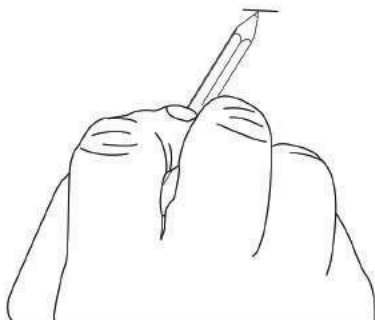


Hammer



Step Ladder

1



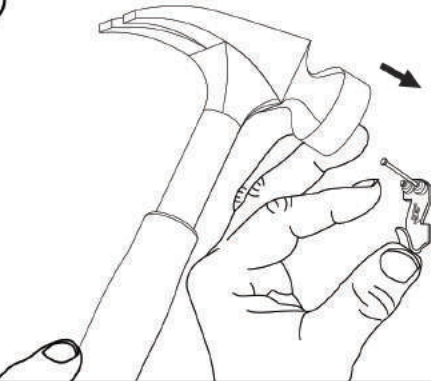
Mark the spot you want to install the shelf hook.

2



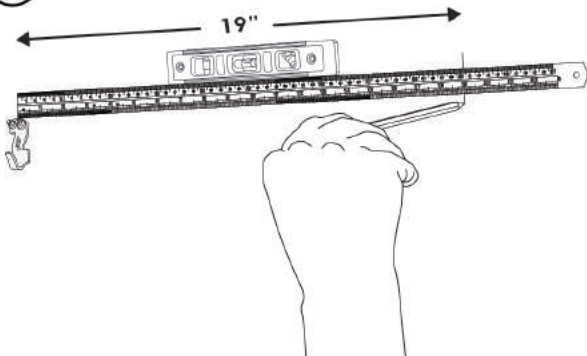
Align the top of shelf hook with your mark.

3

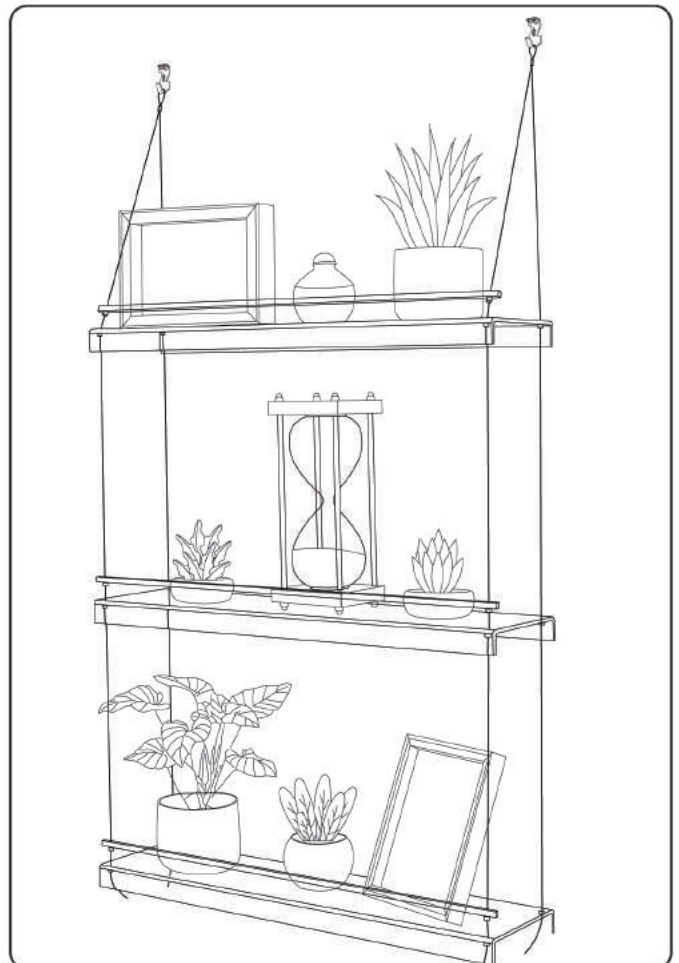


Tap nails into hook.

4



Place yardstick on top of installed hook and measure 19" from the center of the hook. Place a level on top of the yardstick and adjust until it is level before marking. Place second mount on the new mark and repeat Steps 2 & 3. Install cable end loops over the hooks to finish your installation.



# Installing With Angle Brackets



Angle Bracket

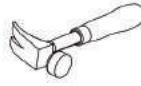
## Tools Needed -



Pencil



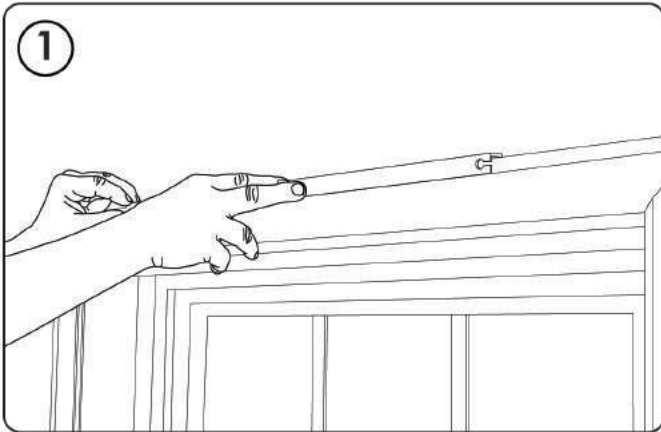
Tape Measure



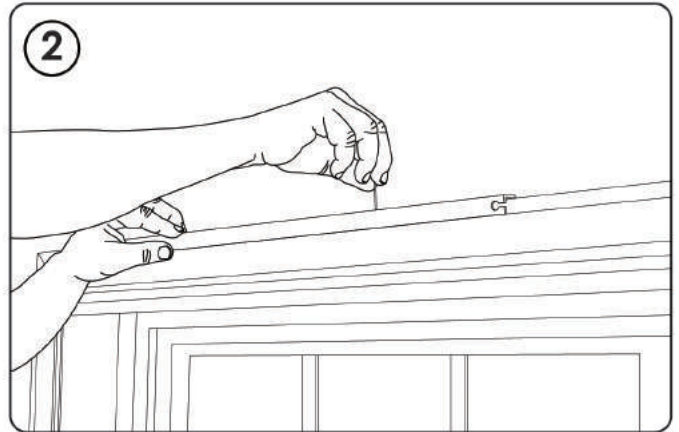
Hammer



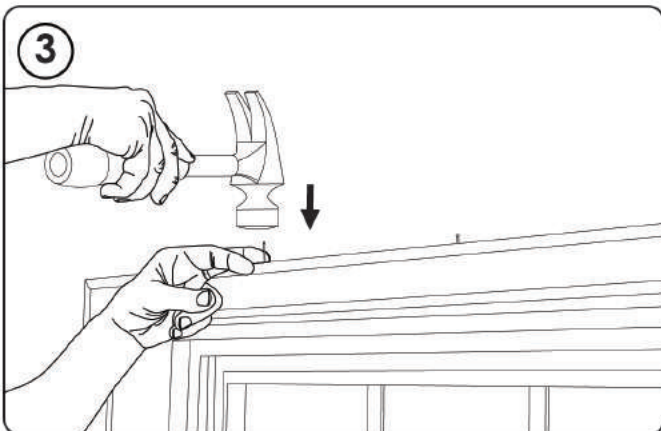
Step Ladder



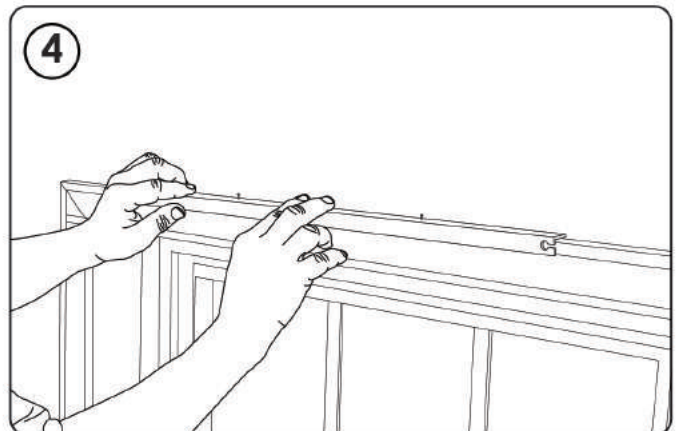
Center the angle bracket in the window.



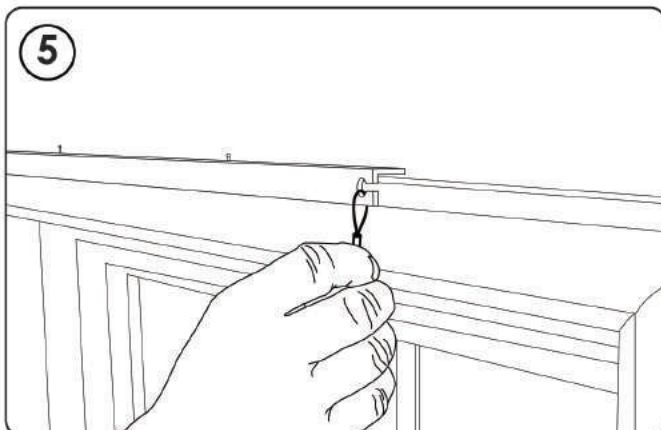
Use pencil or one of the nails to mark the trim beneath the holes in the Angle Bracket.



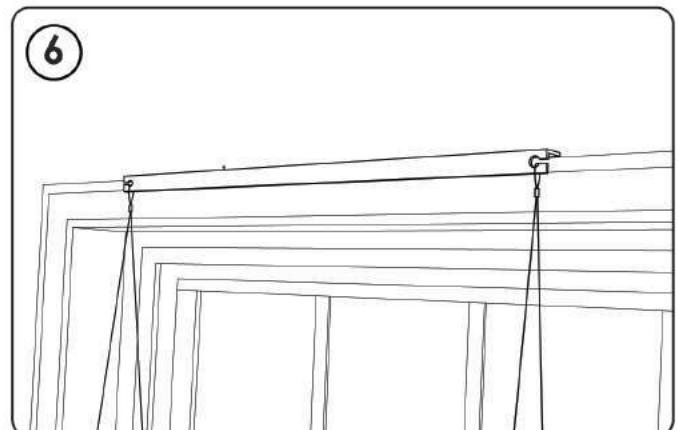
Drive nails into spots you marked on trim. Use the index card to protect wall from hammer scuffs. Leave 3/8" to 1/2" of nails exposed.



Align holes in Angle Bracket with nails installed in trim.



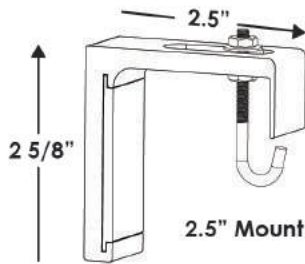
Insert cable loops into the slots cut into the ends of the Angle Bracket.



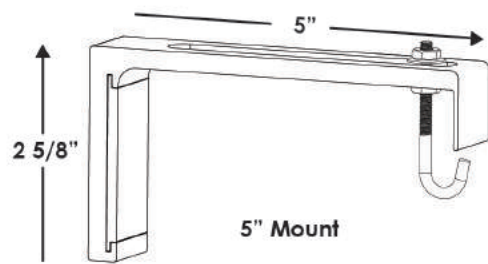
**FINISHED!**



# Installing with Extension Mounts



2.5" Mount



5" Mount

The 2.5" mounts work well for those situations where you just need a couple of inches to help your shelves hang freely, the 5" mount will work for windows where the blinds protrude out past the trim no more than an inch.

## Tools Needed -



Pencil



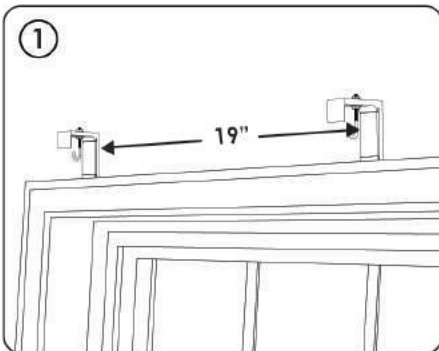
Tape Measure



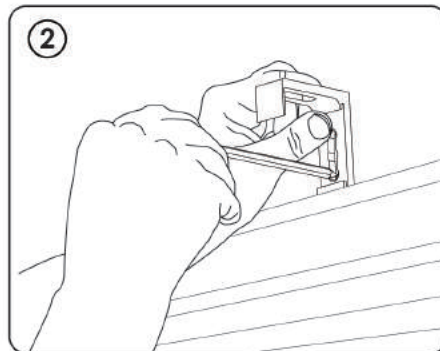
Drill - 1/8" drill bit and philip screw bit



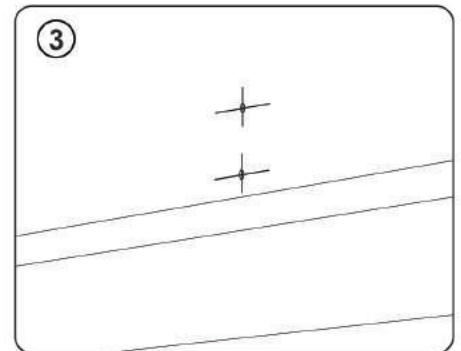
Step Ladder



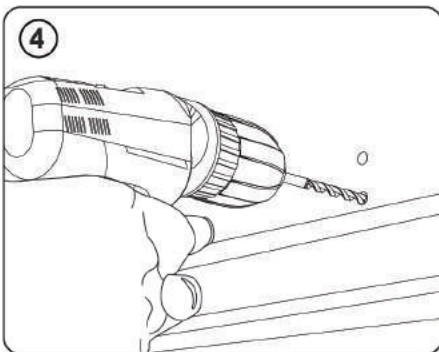
Mounts should be installed 19" apart as measured from the center of the mounts.



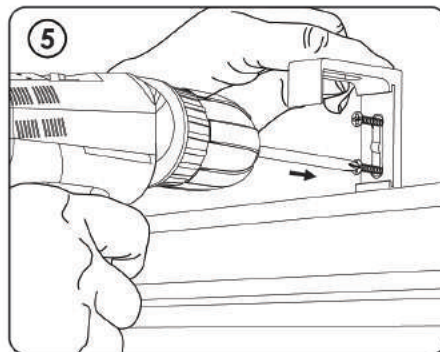
After determining where you want to place the mounts, mark the screw holes.



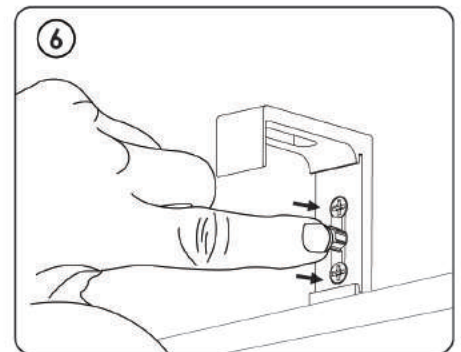
Marked screw holes.



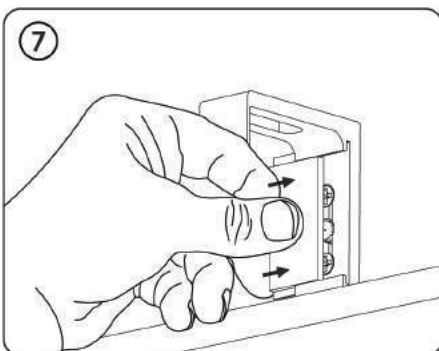
Use 1/8" drill bit to drill pilot holes for the screws.



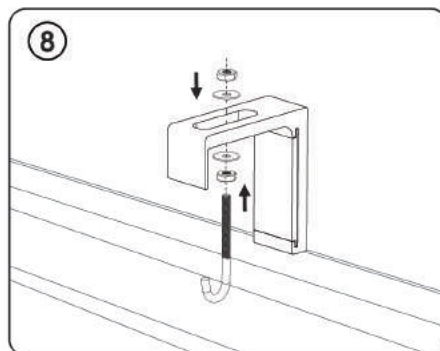
Install screws



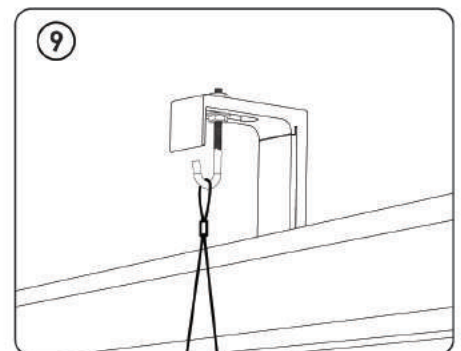
Install rubber button into center hole.



Slide decorative cover plate into place.



Install "J" hooks into the top slot of the mount. The slot will allow you to adjust the "J" hook in or out as needed.



After installing both mounts you can place the cable end loops onto the "J" hooks.

# Installing With Hooks



## Tools Needed -



Pencil



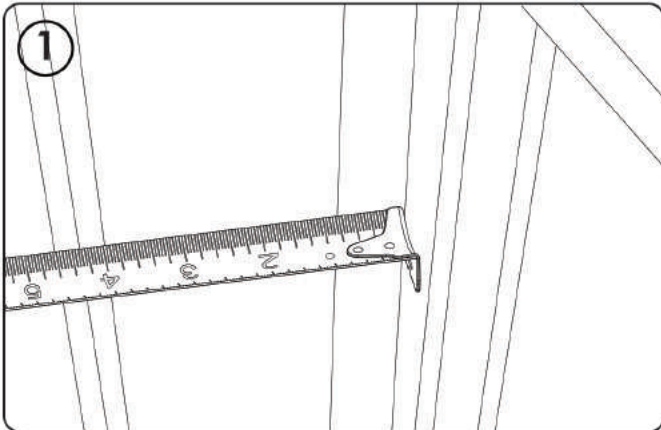
Tape Measure



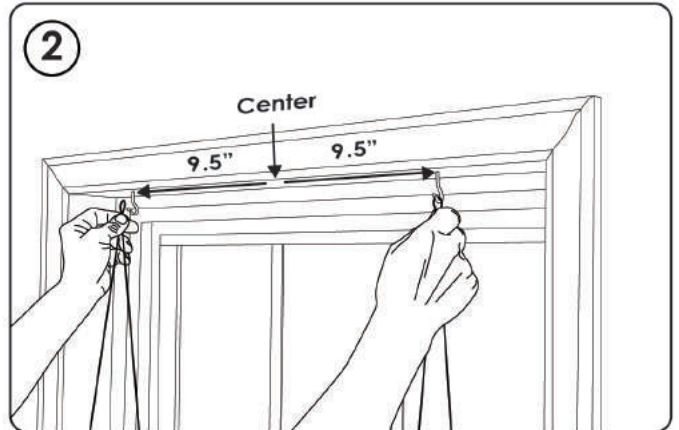
Drill - 1/8" drill bit and  
philip screw bit



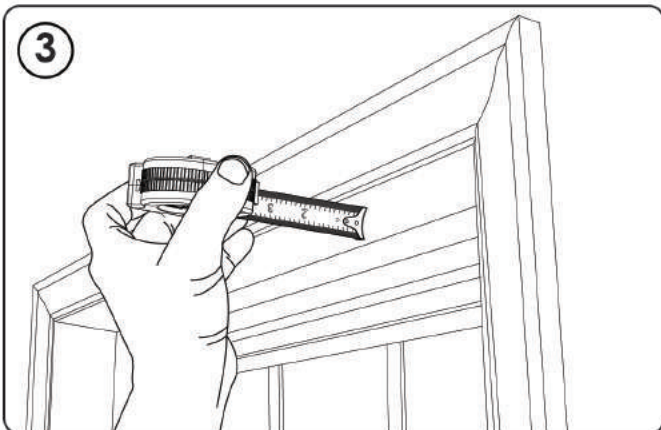
Step Ladder



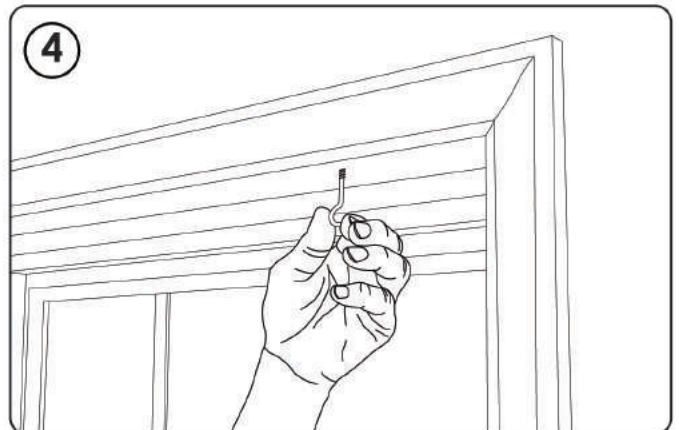
Window depth must be at least 4" down the entire length of the window area that the shelf will occupy.



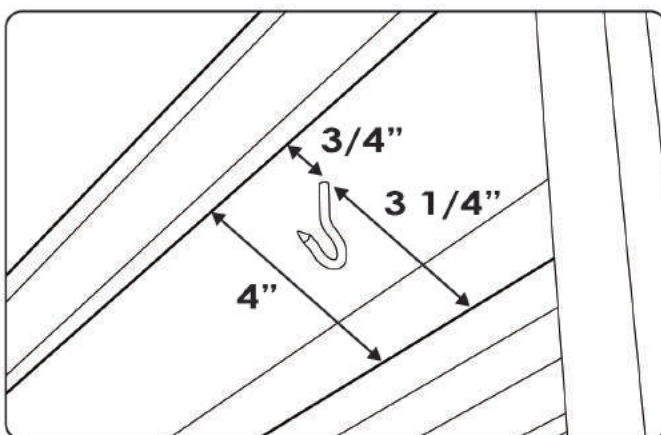
Locate the center of the window then mark 9.5" on both sides of center. The distance between the hooks should be 19"



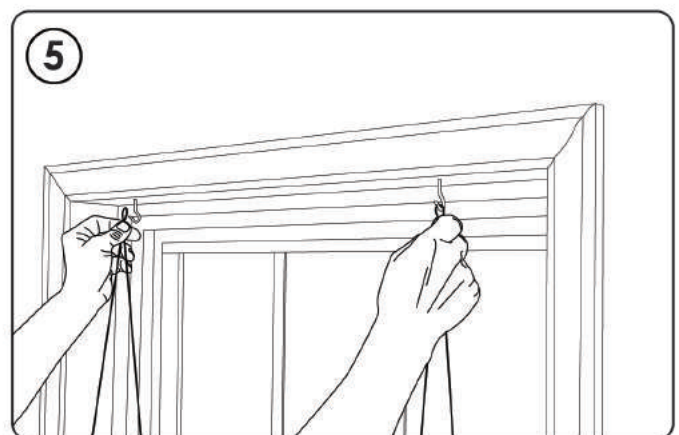
Mark and drill pilot holes 3/4" from edge of the trim.



Install screw hooks into pilot holes.



**IMPORTANT MEASUREMENTS!**



Install the cable end loops on the hooks.