

Simply Coffered Ceiling Systems



Our Simply Coffered Ceiling System is an intelligent, uncomplicated but very versatile beamed ceiling system that offers:

- Countless Design Possibilities – choose from a dozen pre-selected patterns or create your own
- Fast & easy installation resulting in exceptional value for your money
- Reliable lead times and easy shipping options
- Easy to design – quick to quote
- Superior quality, fit and finish
- Flexible design options allows you to work around existing ceiling fixtures (recessed lights, HVAC ducts etc)

www.DecoratorsSupply.com
(800)792-2093

Simply Coffered Ceiling Systems

TABLE OF CONTENTS

1) Anatomy of our Simply Coffered Ceiling System	2
2) Design Options	4
3) Design your own ceiling	7
4) Most Popular Ceilings	8
5) Quote Forms	11
6) Installation Instructions	14

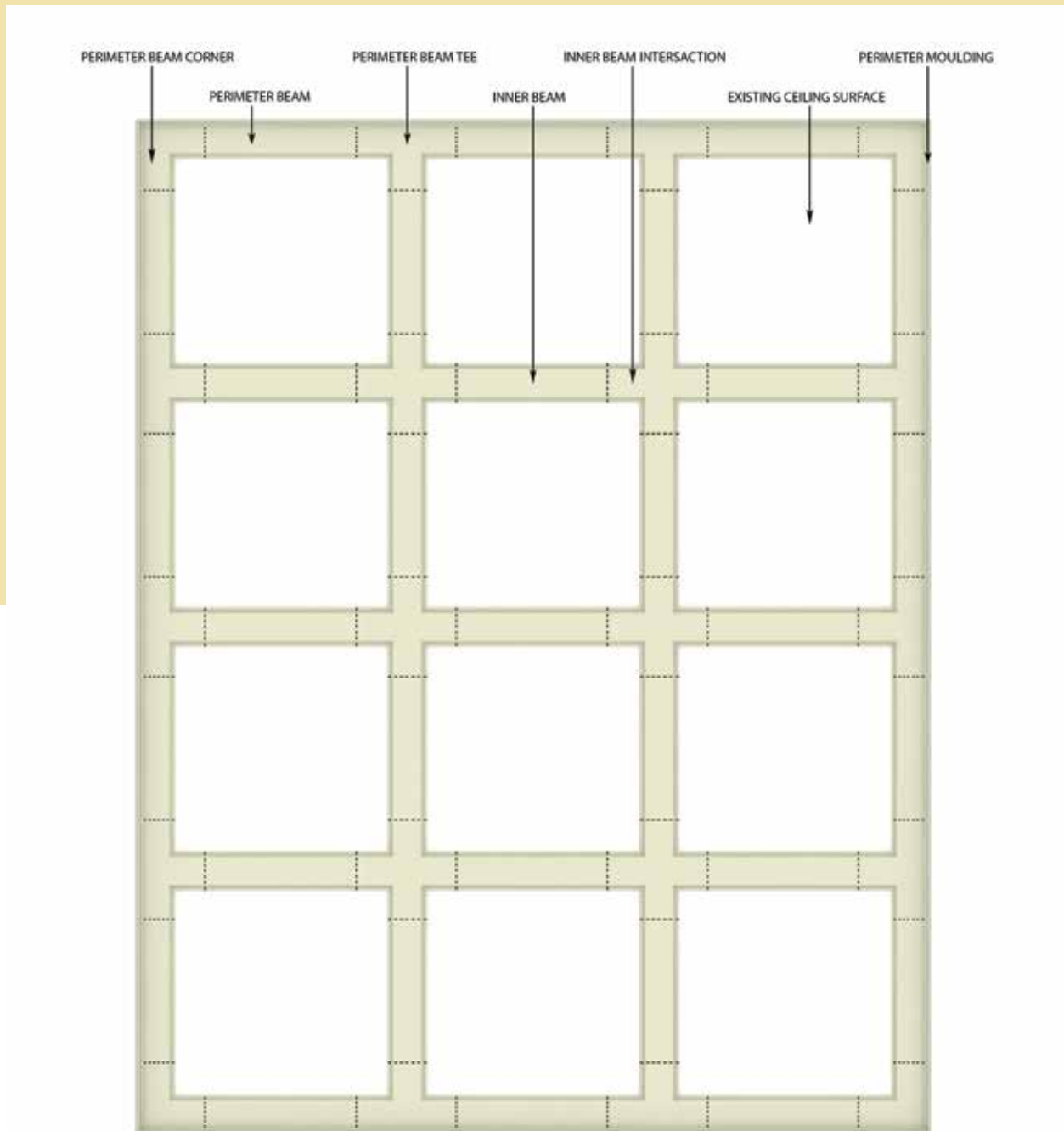
1

Anatomy of our Simply Coffered Ceiling System

Our ingenious Simply Coffered Ceiling System consists of various beam components which are installed in combination to create a complete ceiling pattern. All of these components are created from a deeply sculpted beam shape that mimics the shape of a true coffered ceiling but without the significant expense of a coffered ceiling. The beam measures 1 1/2" x 8"



The image below illustrates a plan view of a classic ceiling system along with the proper terminology and location of each component



All components are manufactured to precise tolerances to ensure consistent and superior quality. With our system you receive a complete kit of ready to install components and instructions. All you need to do is supply the tools and manpower.

2

Design Options

There are almost an unlimited number of design options available with our Simply Coffered Ceiling System. There are, however, two main design groups: 1) Classic 2) Geometric

CLASSIC

Represents the most traditional approach to creating a beamed/coffered ceiling:



There are only three basic components for the classic system:

CLASSIC FITTINGS

(1 1/2"D x 14"W x 14" L)



CORNER

(1 1/2"D x 20"W x 20" L)



INTERSECTION

(1 1/2"D x 14"W x 20" L)



TEE

Plus two basic lineals patterns:

BEAM LINEALS

(1 1/2"D x 8"W x 192" L)



INNER BEAM



PERIMETER BEAM

GEOMETRIC

There are five basic designs in our geometric system

- Each intersection fitting has an associated tee fitting and corner fitting
- The same beam lineals are used as with the Classic system

GEOMETRIC INTERSECTION FITTINGS

(1 1/2"D x 44"W x 44" L)



GEOMETRIC TEE FITTINGS

(1 1/2"D x 26"W x 44" L)



GEOMETRIC CORNER FITTINGS

(1 1/2"D x 26"W x 26" L)



BEAM LINEALS

(1 1/2"D x 8"W x 192" L)

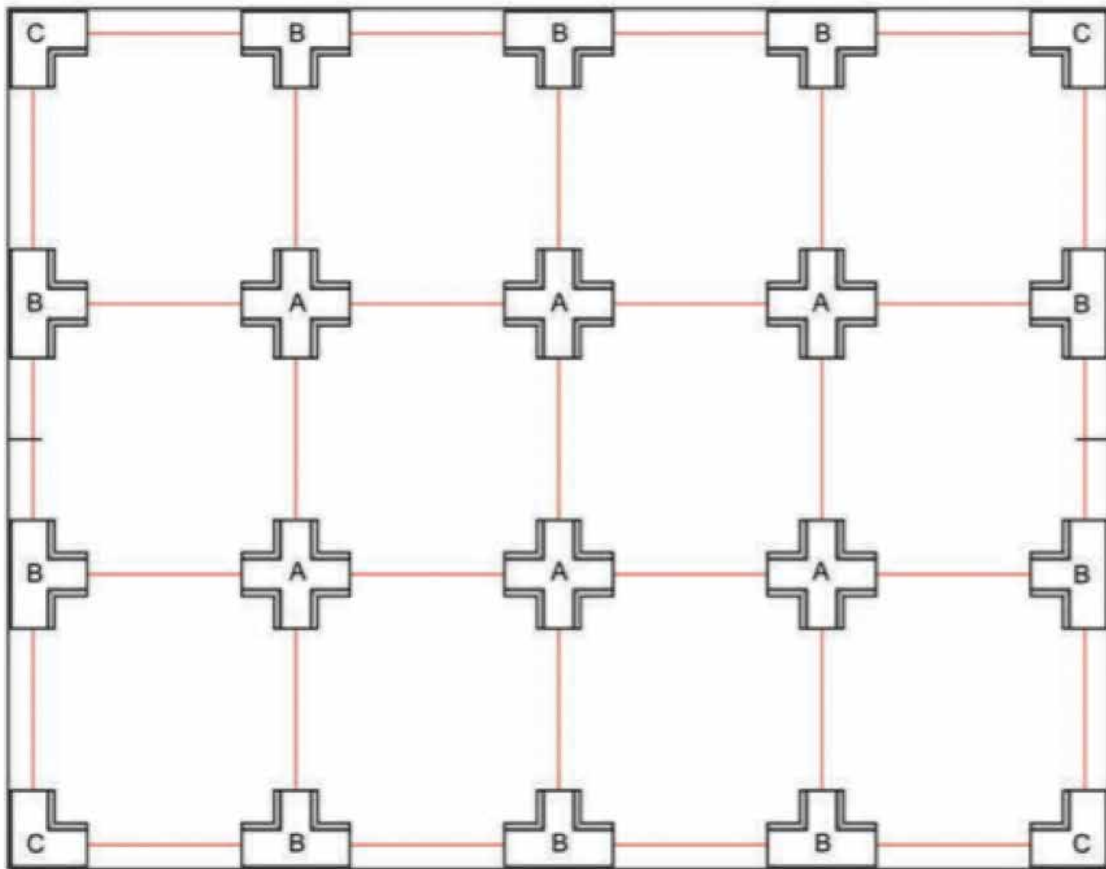


NOTE: INNER BEAM – PERIMETER BEAM

BEAM LINEALS
(1 1/2"D x 8"W x 192" L)



- The inner beam is shaped on both sides
- The outer beam is shaped on one side. The installation example below shows intersections, tees and corners installed with the appropriate tapered sides to receive the matching beam



3

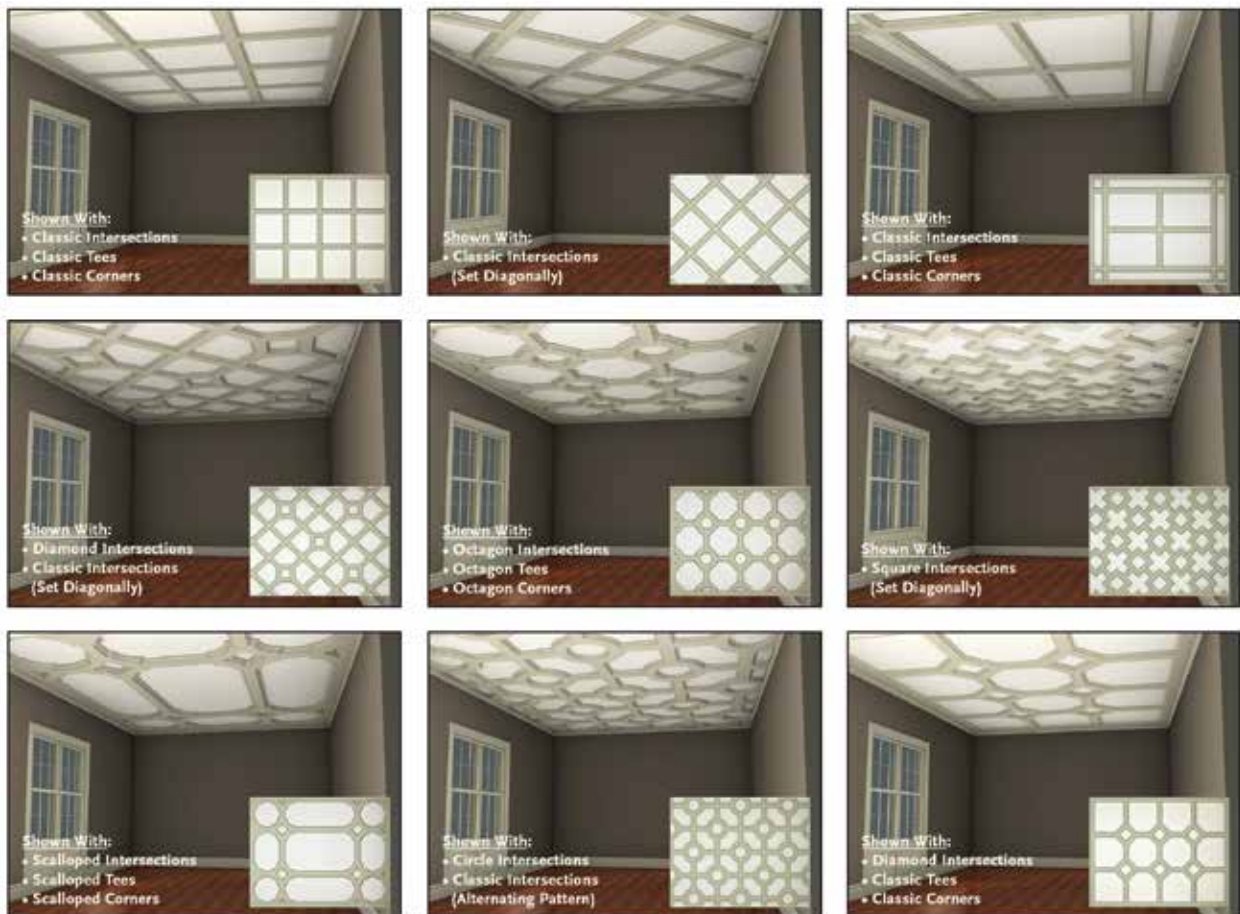
Design Your Own Ceiling

Unlimited Design Options

- Create utilizing uniformed design components (i.e. octagon intersection fitting, octagon tie, octagon corner)
- Mix and match between various design styles
- Create a horizontal layout for a totally different look

The design options are almost limitless

Combine Components to Create a Unique Design for Your Ceiling

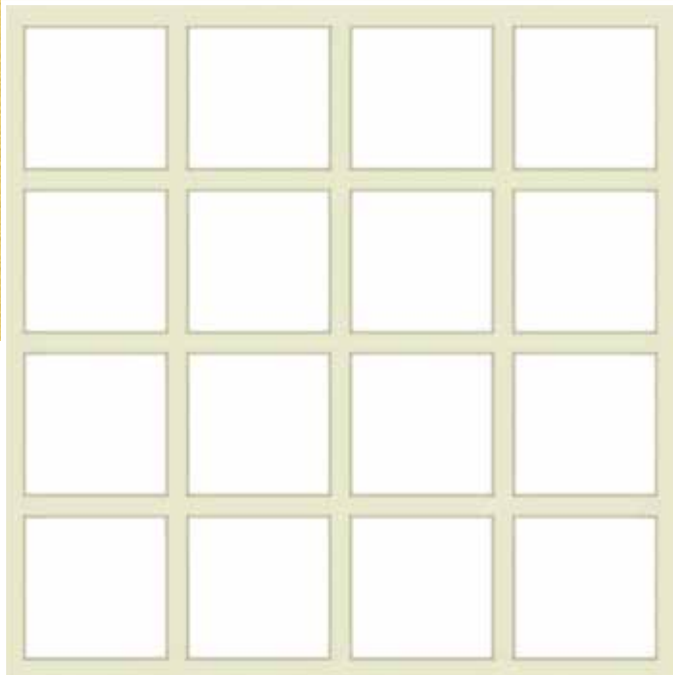


4

Our Most Popular Ceilings

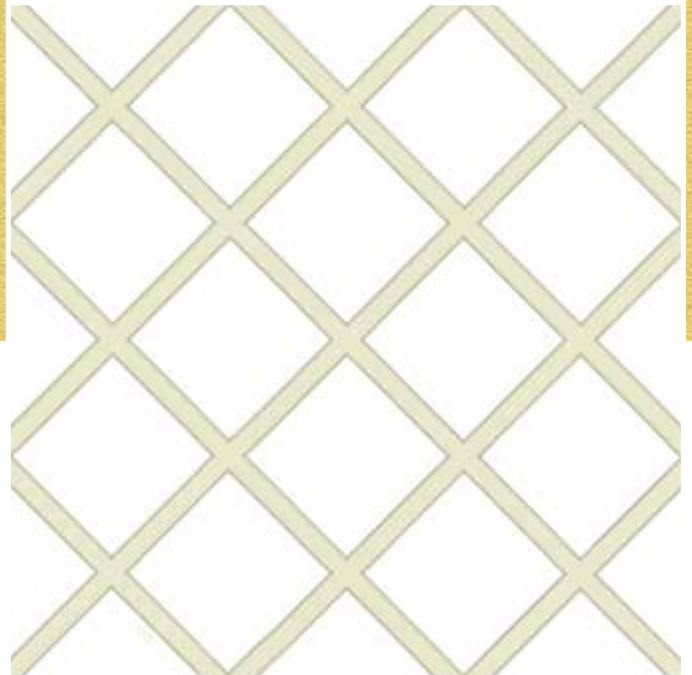
Classic Intersection (Code: CLCC)

Classic Tees & Corners



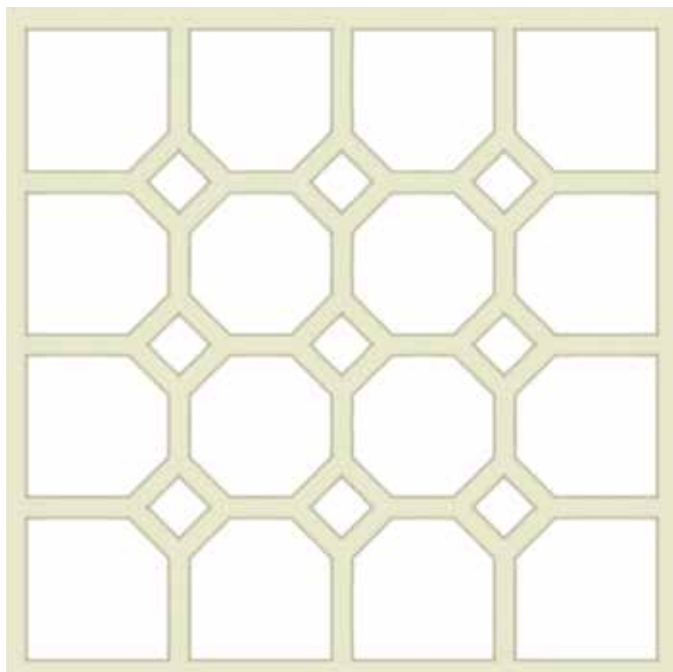
Classic Diagonal (Code: CLDI)

No Tees & Corners



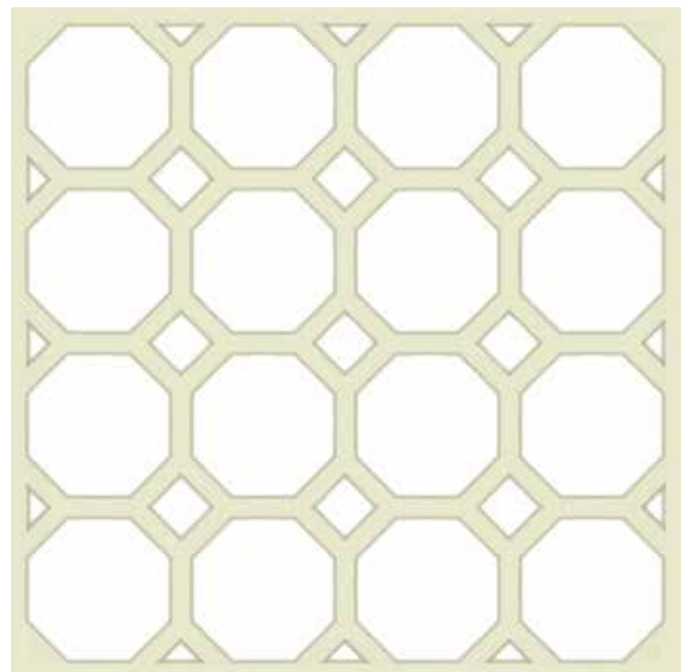
Diamond Intersection (Code: DICC)

Classic Tees & Corners



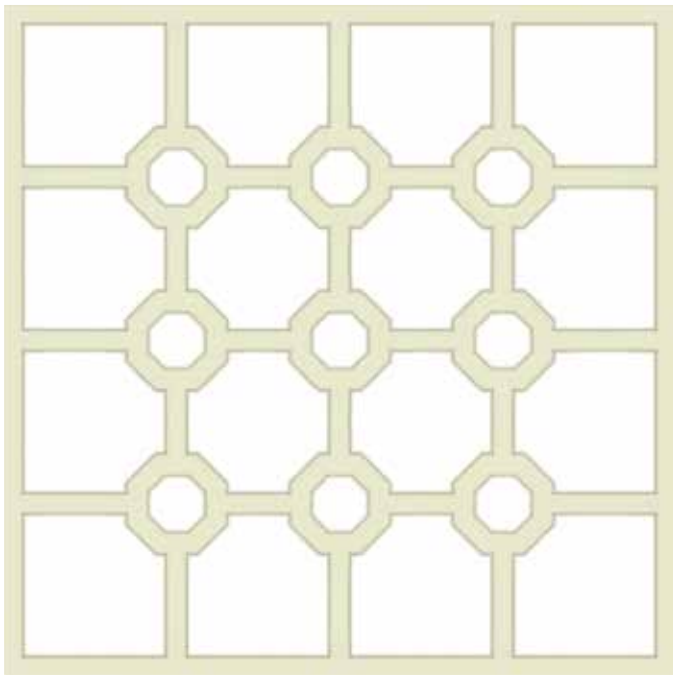
Diamond Intersection (Code DIDD)

Diamond Tees & Corners



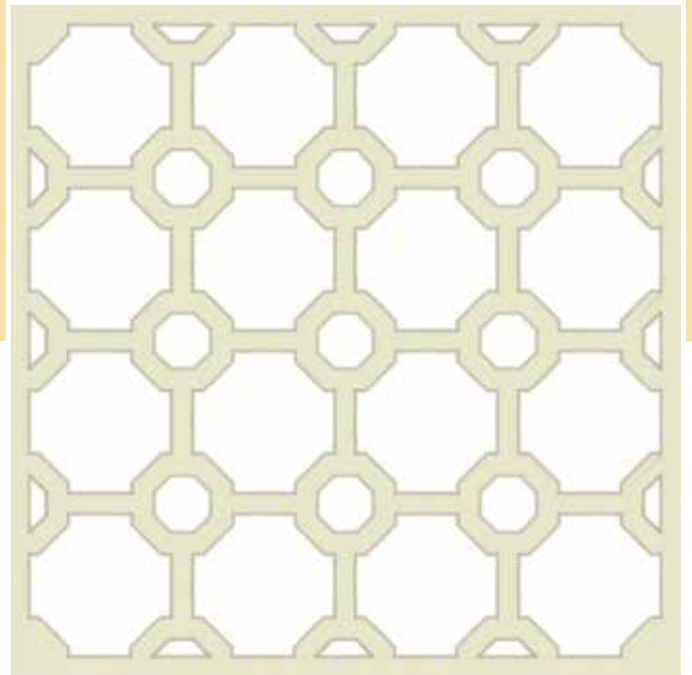
Octagon Intersection (Code: OCCC)

Classic Tees & Corners



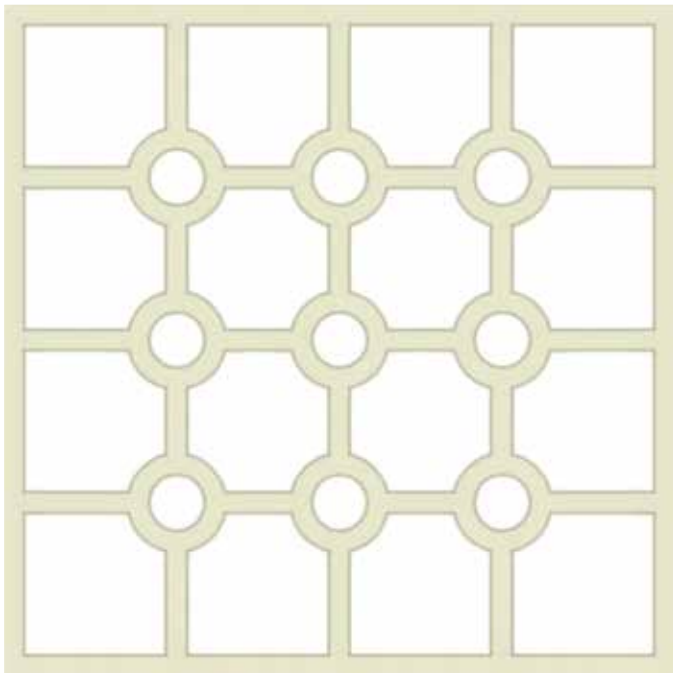
Octagon Intersection (Code: OCOO)

Octagon Tees & Corners



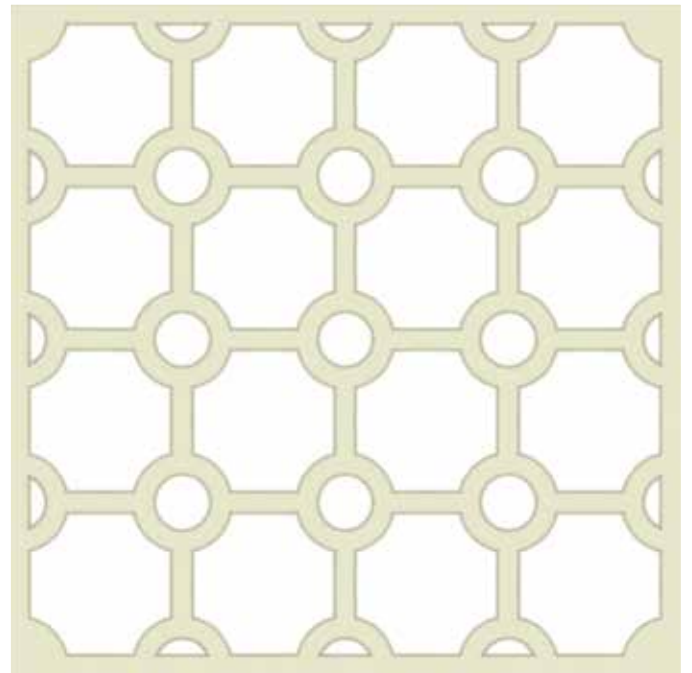
Circle Intersection (Code: CRCC)

Classic Tees & Corners



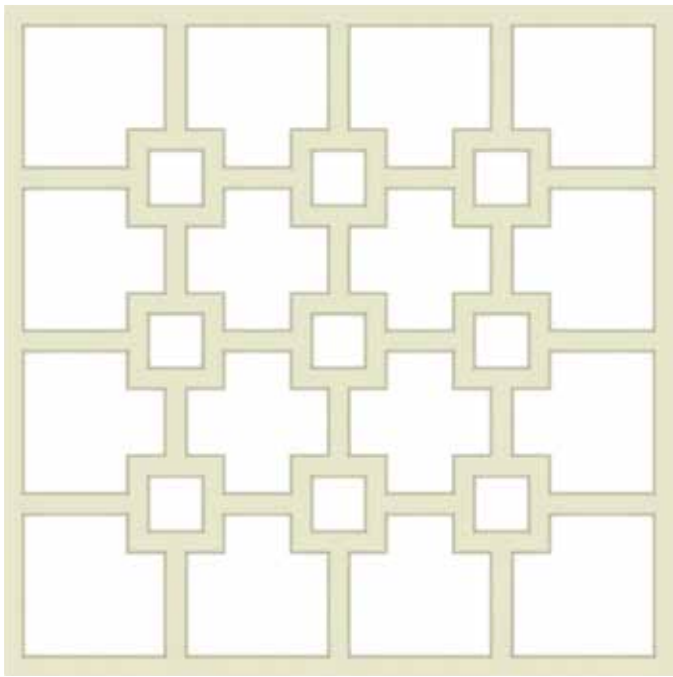
Circle Intersection (Code: CRRR)

Circle Tees & Corners



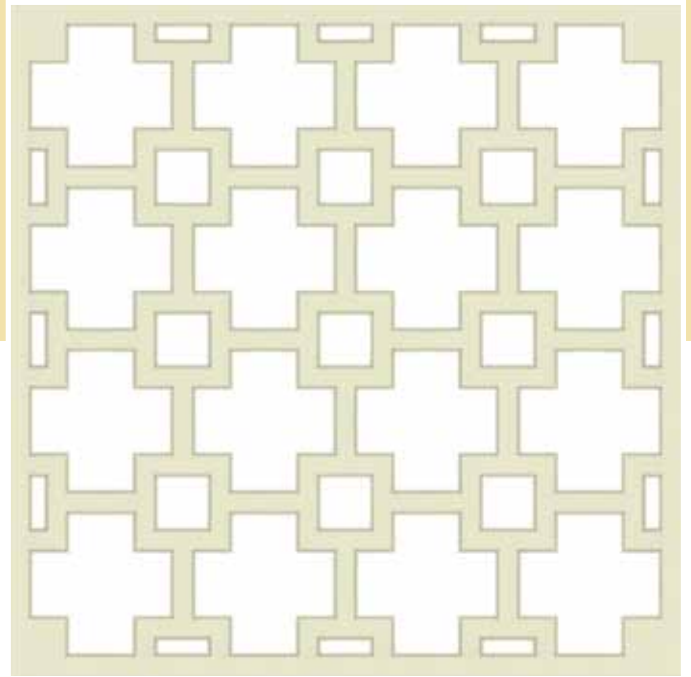
Square Intersection (Code: SQCC)

Classic Tees & Corner



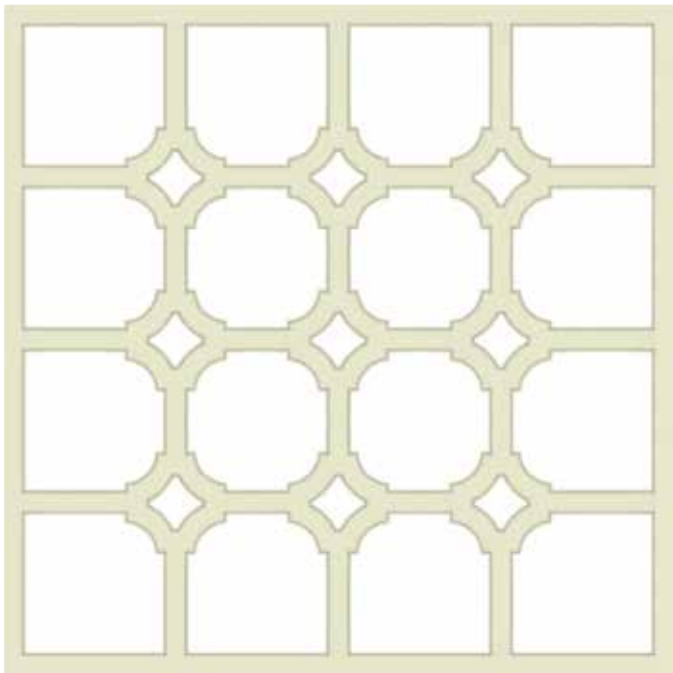
Square Intersection (Code: SQSS)

Square Tees & Corners



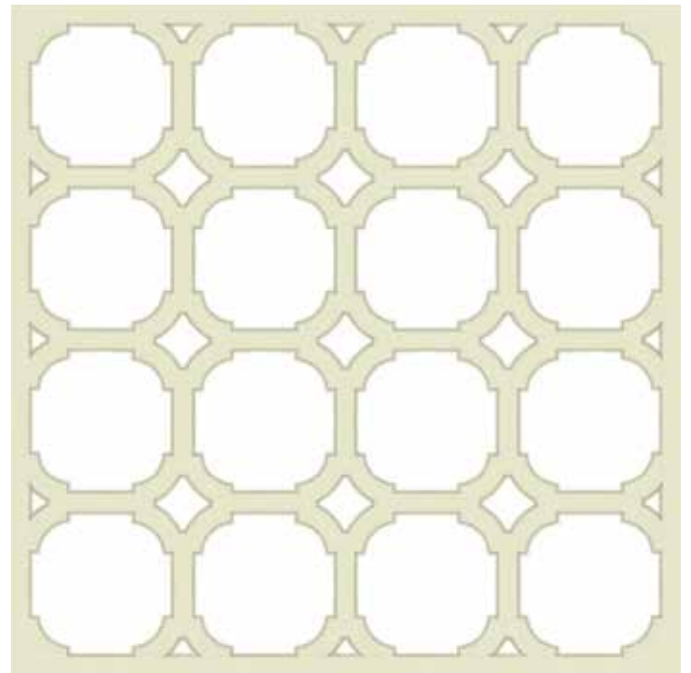
Scalloped Intersection (Code: SCCC)

Classic Tees & Corner



Scalloped Intersection (Code: SCSS)

Scalloped Tees & Corner



5

Quote Form Classic Ceiling

Email or fax this form to us: assist@DecoratorsSupply.com or (773) 847-6357

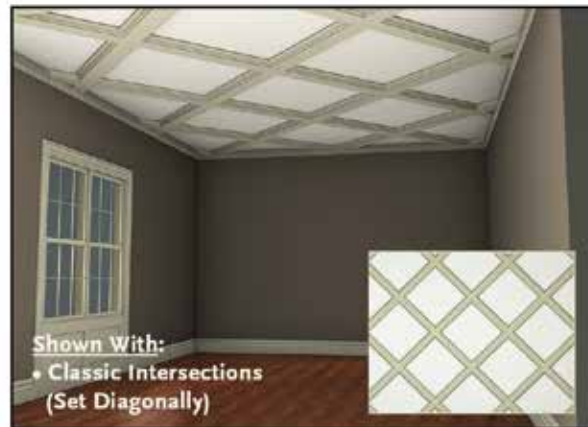
Name: _____

Company Name: _____

Email Address: _____

Phone Number: _____

Room Dimensions: Length: _____ Width: _____



Which ceiling design do you want:

CLCC - Classic Intersection With Classic Tees & Corners

CLDI - Classic Diagonal No Tees & Corners

Note: The number of coffers can be increased or decreased depending on how many beams and intersections you order (i.e. above left rendering shows 12 coffers). Please specify if you want a specific number of coffers, otherwise our initial quote will generate a quote for our most popular number of coffers based upon room size:

If desired please specify number of coffers: _____

Quote Form – Geometric Ceiling

Email or fax this form to us: assist@DecoratorsSupply.com or (773) 847-6357

Name: _____

Company Name: _____

Email Address: _____

Phone Number: _____

Room Dimensions: Length: _____ Width: _____

GEOMETRIC INTERSECTION FITTINGS

(1 1/2"D x 44"W x 44" L)



CIRCLE

DIAMOND

OCTAGON

SCALLOPED

SQUARE

GEOMETRIC TEE FITTINGS

(1 1/2"D x 26"W x 44" L)



CIRCLE

DIAMOND

OCTAGON

SCALLOPED

SQUARE

GEOMETRIC CORNER FITTINGS

(1 1/2"D x 26"W x 26" L)



CIRCLE

DIAMOND

OCTAGON

SCALLOPED

SQUARE

BEAM LINEALS

(1 1/2"D x 8"W x 192" L)



INNER BEAM

PERIMETER BEAM

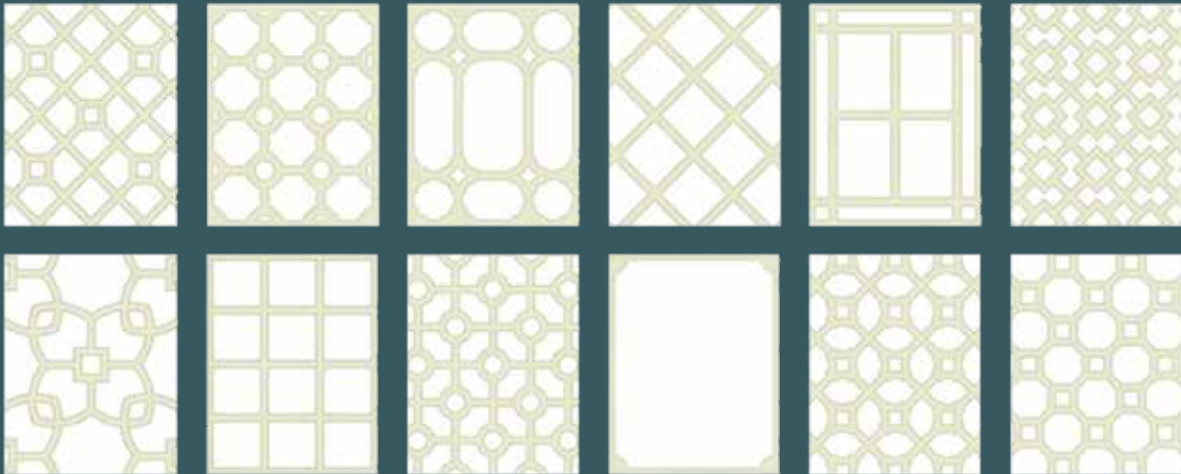
Which ceiling do you want:

- | | |
|---|--|
| <p><input type="checkbox"/> DICC
Diamond Intersection with classic tees & corner</p> <p><input type="checkbox"/> OSCC
Octagon intersection with classic tees & corners</p> <p><input type="checkbox"/> CRCC
Circle intersection with classic tees & corners</p> <p><input type="checkbox"/> SQCC
Square intersection with classic tees & corners</p> <p><input type="checkbox"/> SCCC
Scalloped intersection with classic tees & corners</p> | <p><input type="checkbox"/> DIDD
Diamond intersection with diamond tees & corners</p> <p><input type="checkbox"/> OSCO
Octagon intersection with octagon tees and corners</p> <p><input type="checkbox"/> CRRC
Circle intersection with circle tees & corners</p> <p><input type="checkbox"/> SQSS
Square intersection with square tees & corners</p> <p><input type="checkbox"/> SCSS
Scalloped intersection with scalloped tees and corners</p> |
|---|--|

Quote Form – Build Your Own Ceiling

Email or fax this form to us: assist@DecoratorsSupply.com or (773) 847-6357

Ceiling design options are nearly unlimited:



Room Dimensions: Length: _____ Width: _____

How many coffers do you want in the ceiling?: _____

Which intersection fitting do you want to use?: _____

Which tee fitting do you want to use?: _____

Which corner fitting do you want to use?: _____

Send us a rough drawing of what you want to create utilizing the components below and we will create a quote for you.

GEOMETRIC INTERSECTION FITTINGS

(1 1/2"D x 44"W x 44" L)



CIRCLE

DIAMOND

OCTAGON

SCALLOPED

SQUARE

GEOMETRIC TEE FITTINGS

(1 1/2"D x 26"W x 44" L)



CIRCLE

DIAMOND

OCTAGON

SCALLOPED

SQUARE

GEOMETRIC CORNER FITTINGS

(1 1/2"D x 26"W x 26" L)



CIRCLE

DIAMOND

OCTAGON

SCALLOPED

SQUARE

BEAM LINEALS

(1 1/2"D x 8"W x 192" L)



INNER BEAM

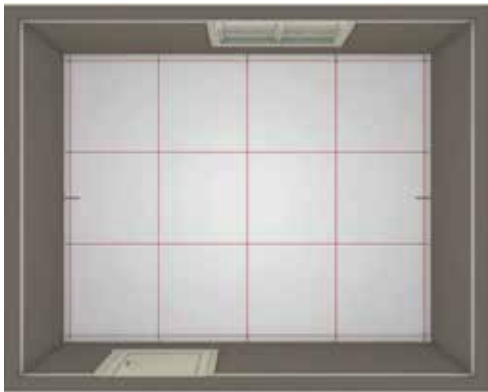
PERIMETER BEAM

6

Basic Installation Procedures

See our “Installation Info” tab on our homepage for a video and detailed PDF with step by step directions. The directions below give a quick overview of how to install our *Simply Coffered Ceiling System*.

STEP 1 - Measure and Mark



- Measure and mark the center points for the beam layout on the ceiling surface.
- Snap chalk lines to connect the center point marks across the entire ceiling area.

TOOLS NEEDED FOR THIS STEP:

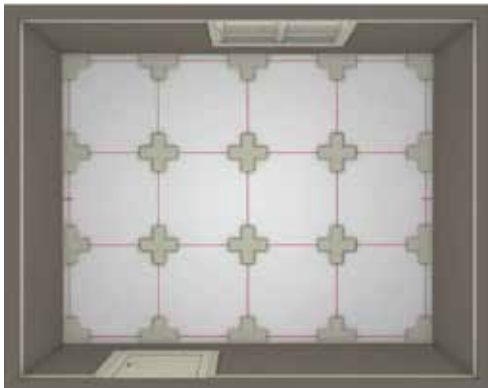


Tape Measure



Chalk Line

STEP 2 - Secure the Beam Fittings

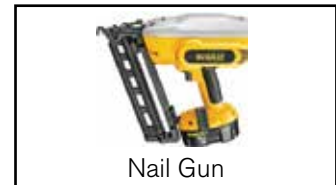


- Apply adhesive to the back of the Beam Fittings and position them centered on the appropriate chalk lines.
- Secure the Beam Fittings to the ceiling surface with finish nails.

TOOLS NEEDED FOR THIS STEP:



Caulk Gun



Nail Gun

STEP 3 - Install the Beam Lineals and Perimeter Moldings



- Cut to length and install the Beam Lineals between the Beam Fittings using adhesive and finish nails.
- Install the Perimeter Molding around the entire perimeter of the ceiling.

TOOLS NEEDED FOR THIS STEP:



Tape Measure



Miter Saw



Nail Gun