

# Ceilings

DECORATORS SUPPLY  
CORPORATION



— Since 1883 —



## *Decorators Supply offers over 20 unique ceiling designs:*

Our **Tracery** offerings are open tracery patterns (ribbing only) that create beautiful, geometric ceiling patterns. While fixed sizes are shown for each component, we may have the ability with an additional charge to create custom sizes. Please contact us for further information. *Pages 1-4*

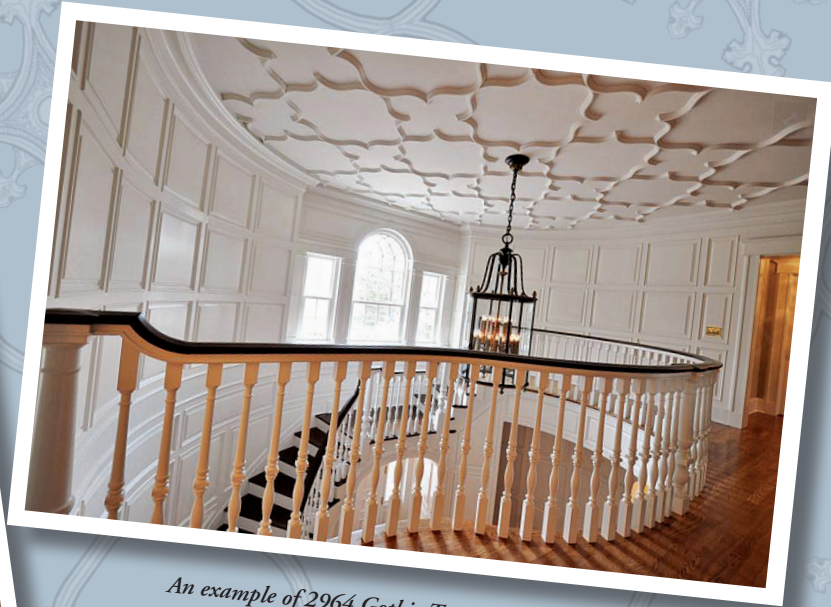
Our seven (7) **Plaster Ceiling Panel** designs are interlocking panels that cover the ceiling surface. *Pages 5-12*

The eleven (11) **Ceiling Ornaments Group** designs offer coordinated components (center ornaments, corner ornaments, running mouldings, etc...) that are applied to your existing ceilings. These ceiling designs can be modified by adding or eliminating components to meet your requirements. *Pages 13-23*

Please visit our website to view digital images of these beautiful ceiling pieces as well as to access our CAD files.



*Example of a 25001B installation*



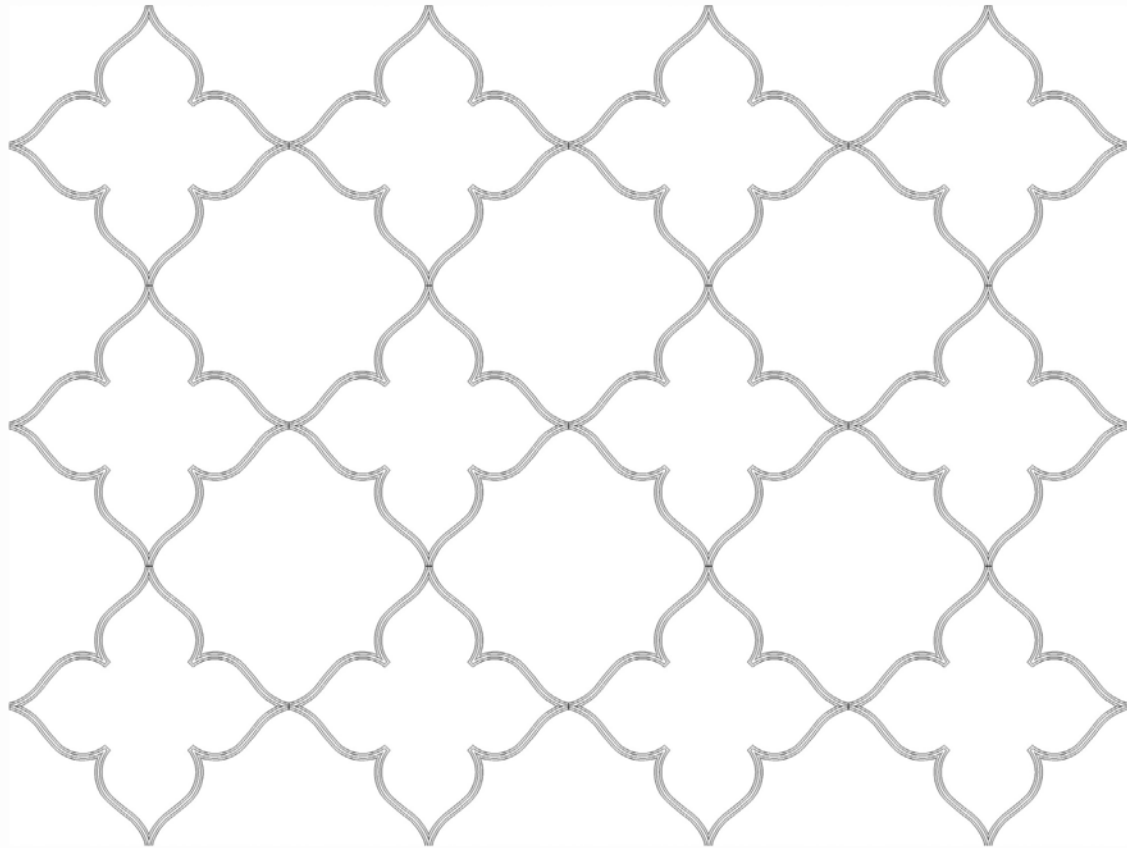
*An example of 2964 Gothic Tracery installation*

Copyright © 2014

All rights reserved. This book or any portion thereof may not be reproduced or used in any manner whatsoever without the express written permission of the author. Printed in the United States of America.



## Gothic Tracery



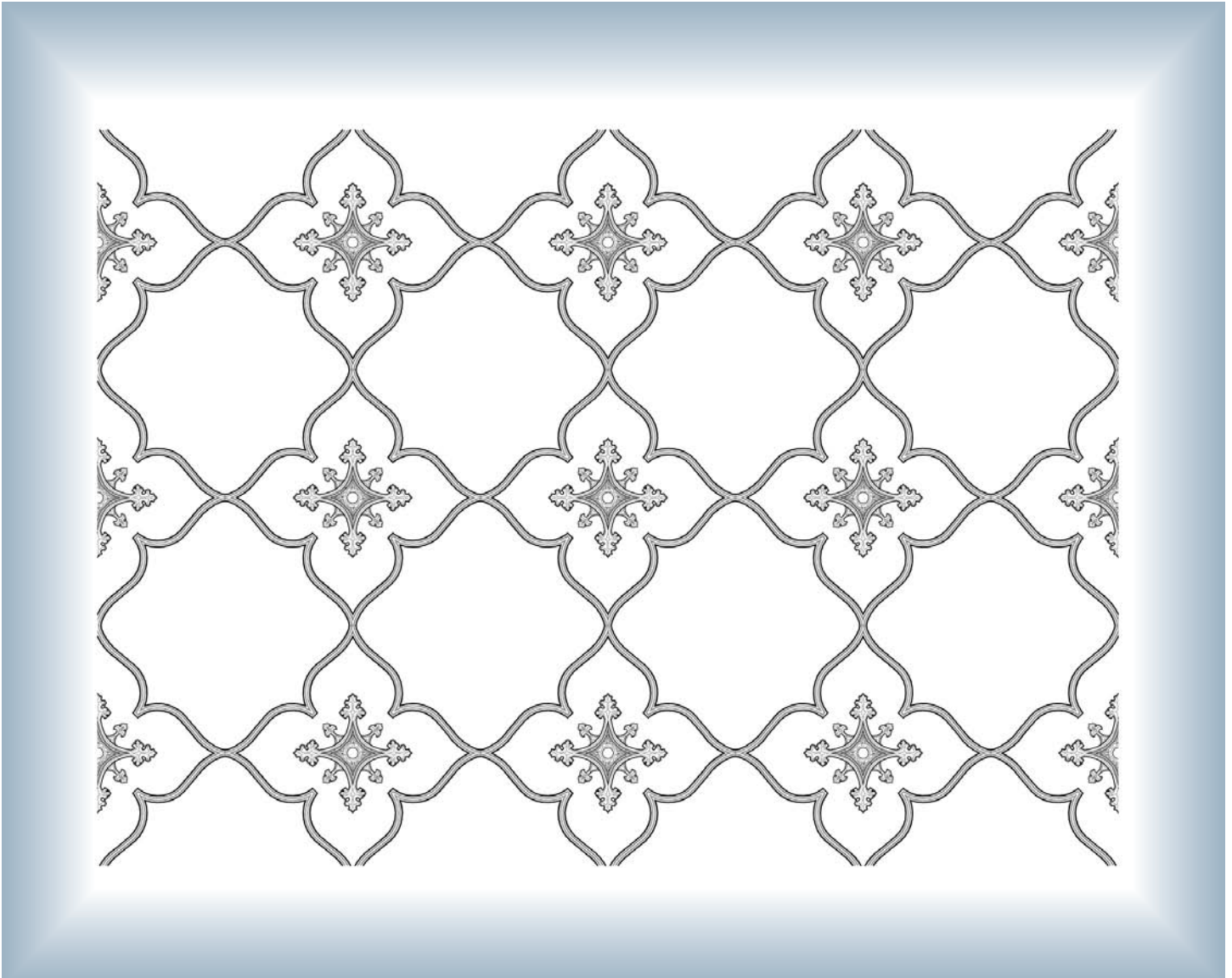
2964 Is an Open Tracery – Ribbing Only

Dimensions – 43” on the Diagonal

Size of group can be modified. Arrangement as shown is tapproximately 14’4” x 10’9”



## Gothic Tracery with Optional Medallion #750



2964 Is an Open Tracery – Ribbing Only

Dimensions – 43” on the Diagonal

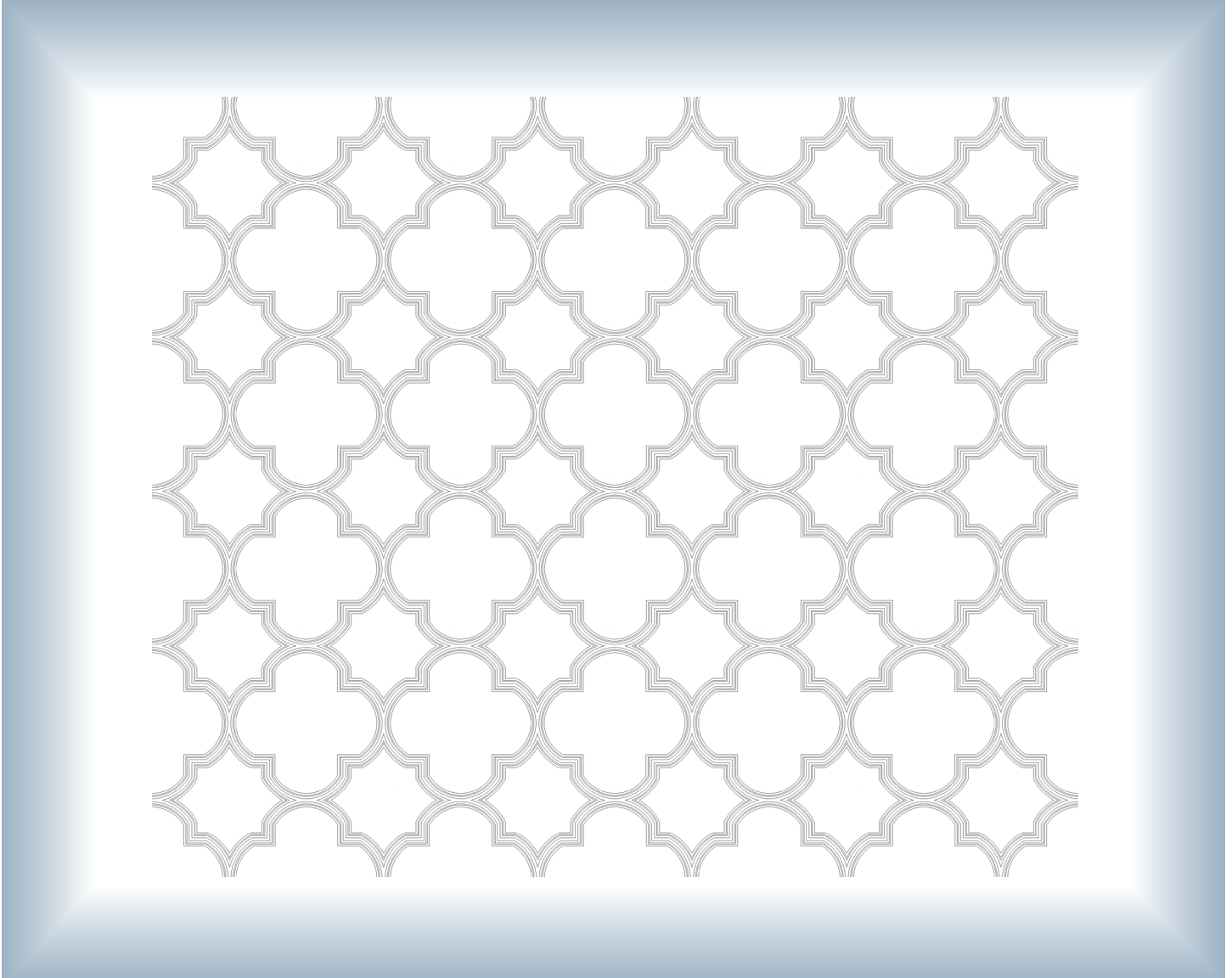
Pictured With Optional 20” Gothic Medallion #750

Size of group can be modified. Arrangement as shown is approximately 14’4” x 10’9”





## Baronial Tracery



TRA100 Is an Open Tracery – Ribbing Only

Dimensions – 20<sup>5/16</sup>” Square

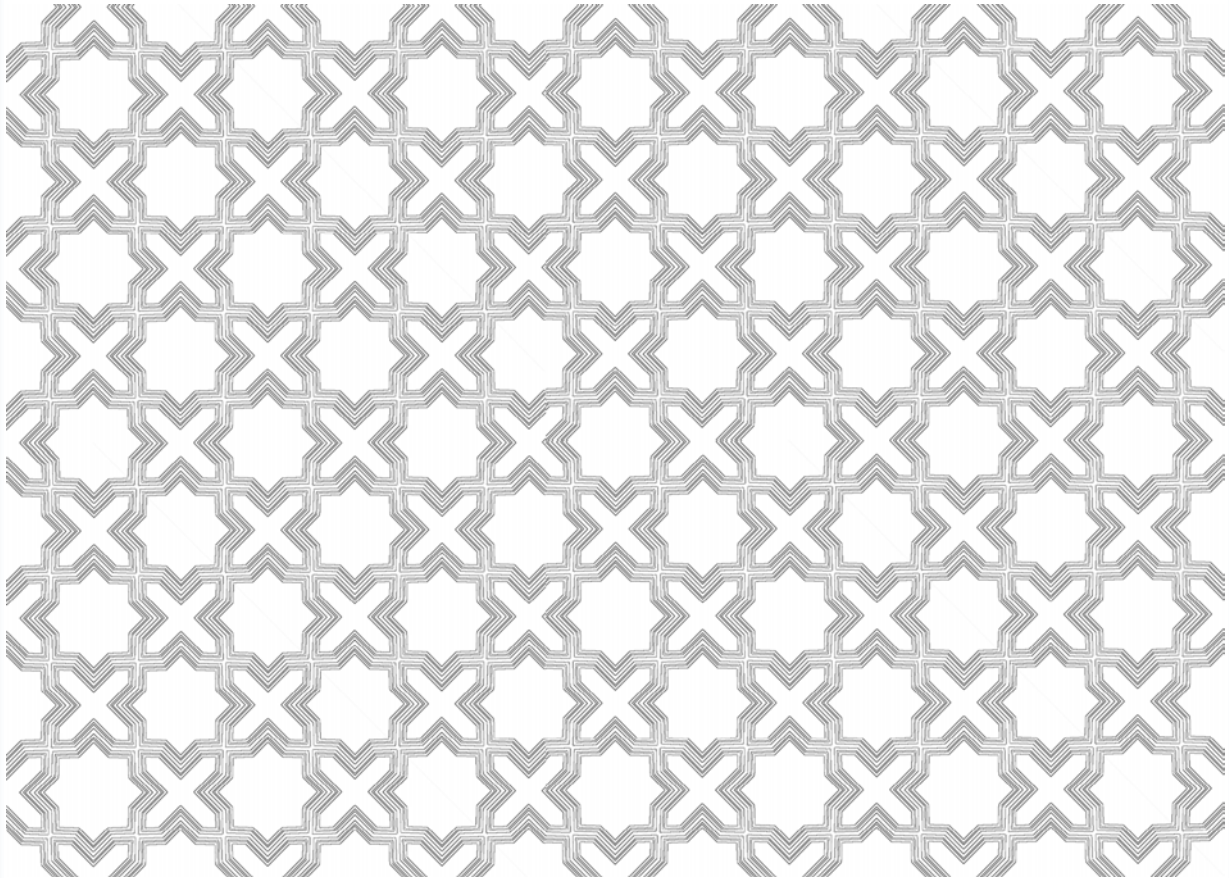
Size of group can be modified. Arrangement as shown is approximately 8’ 6” x 10’ 2”



DECORATORS SUPPLY  
CORPORATION

# TRA101

## Baronial Tracery



TRA101 Is an Open Tracery – Ribbing Only

Dimensions – 12<sup>11/16</sup>” Square

Size of group can be modified. Arrangement as shown is approximately 8’0” x 11’ 6”

DECORATORS SUPPLY CORPORATION

phone: 800.792.2093 • fax: 773.847.6357 • [www.DecoratorsSupply.com](http://www.DecoratorsSupply.com)

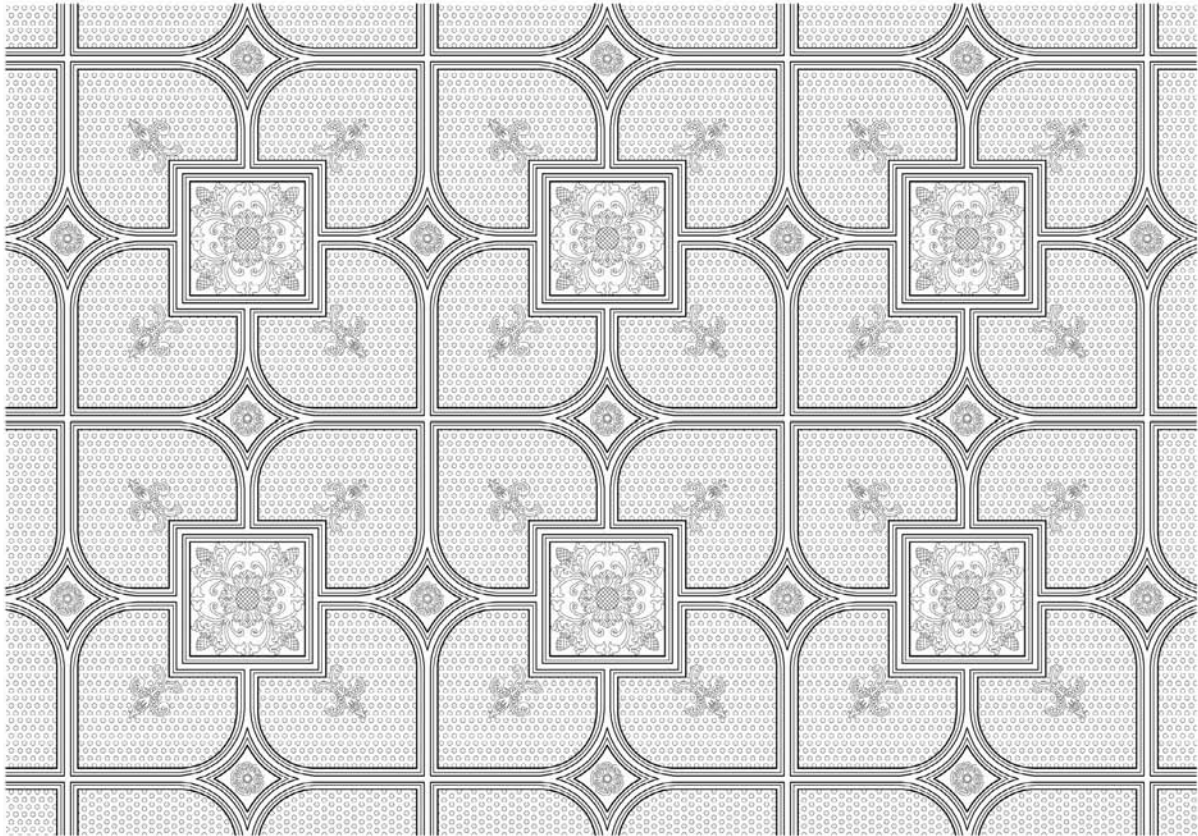


# 25005

DECORATORS SUPPLY  
CORPORATION



## Old English Ceiling Panel



Hammered Background with Ornamentation  
Each Panel is 36½" Square With a 1⅛" Relief  
Approximate Group Size As Shown: 9'6" x 6'6"

DECORATORS SUPPLY CORPORATION

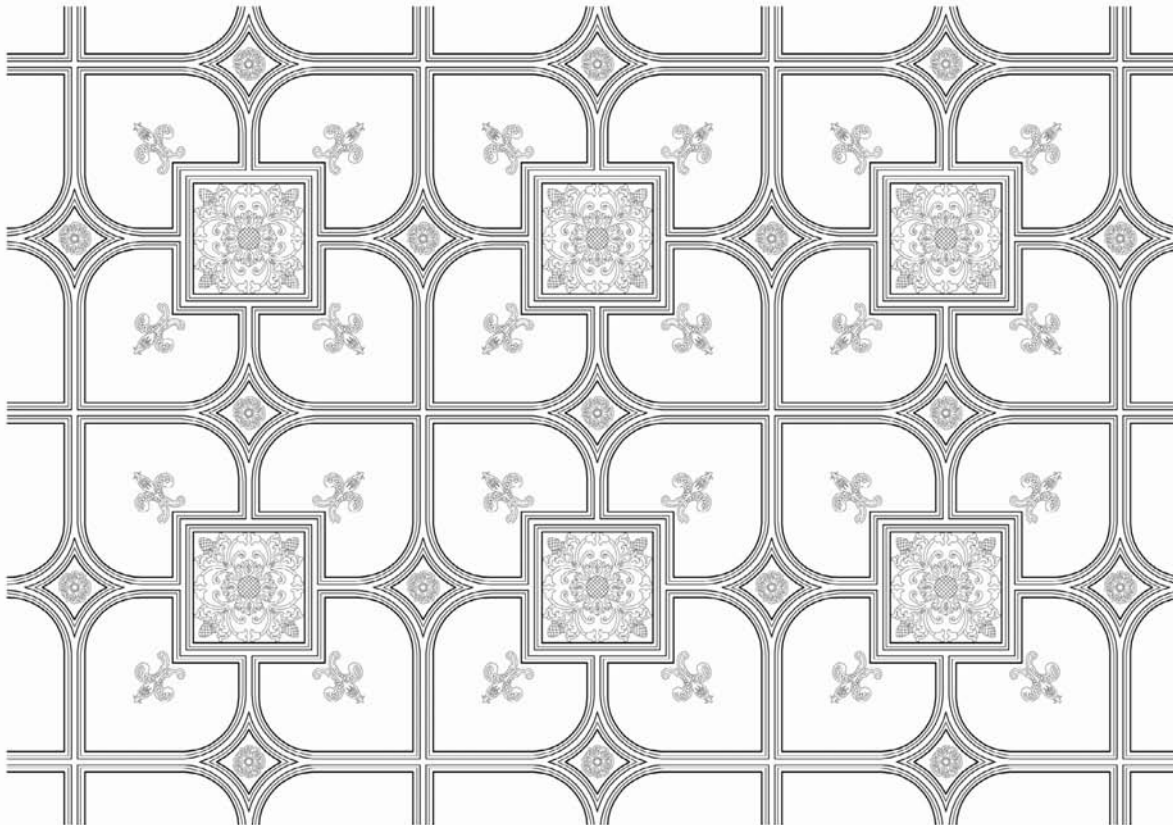
phone: 800.792.2093 • fax: 773.847.6357 • [www.DecoratorsSupply.com](http://www.DecoratorsSupply.com)



DECORATORS SUPPLY  
CORPORATION

# 25005A

## Old English Ceiling Panel



Smooth Background with Ornamentation  
Each Panel is 36½" Square With a 1⅛" Relief  
Approximate Group Size As Shown: 9'6" x 6'6"

DECORATORS SUPPLY CORPORATION

phone: 800.792.2093 • fax: 773.847.6357 • [www.DecoratorsSupply.com](http://www.DecoratorsSupply.com)

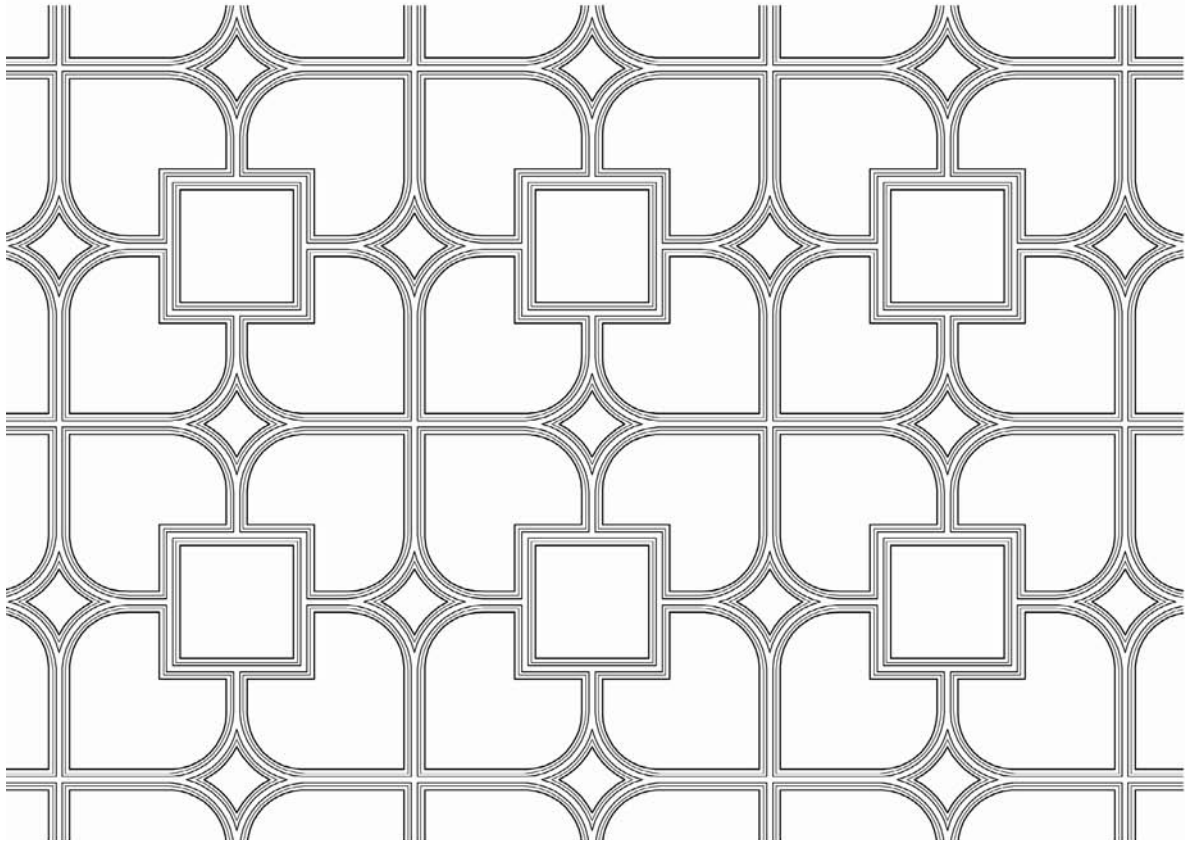


# 25005B

DECORATORS SUPPLY  
CORPORATION



## Old English Ceiling Panel



Smooth Background with No Ornamentation  
Each Panel is 36½" Square With a 1⅛" Relief  
Approximate Group Size As Shown: 9'6" x 6'6"

DECORATORS SUPPLY CORPORATION

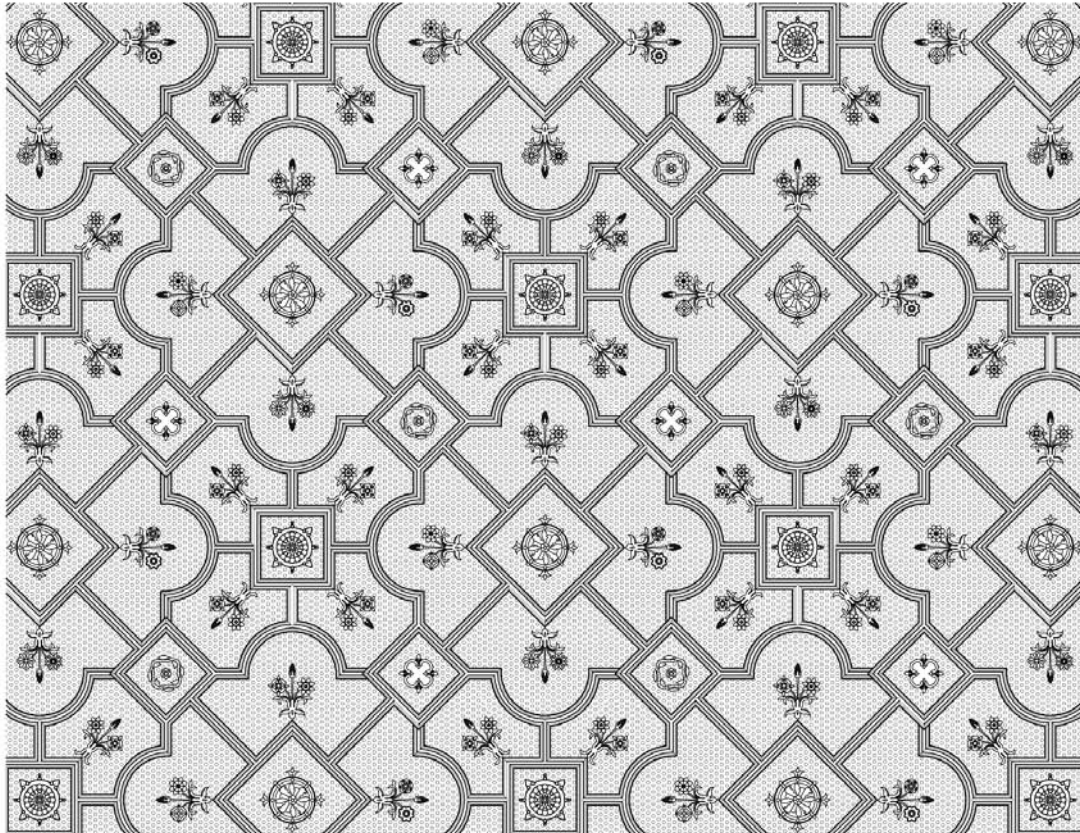
phone: 800.792.2093 • fax: 773.847.6357 • [www.DecoratorsSupply.com](http://www.DecoratorsSupply.com)



DECORATORS SUPPLY  
CORPORATION

# 25001B

## Old English Ceiling Panel Full View



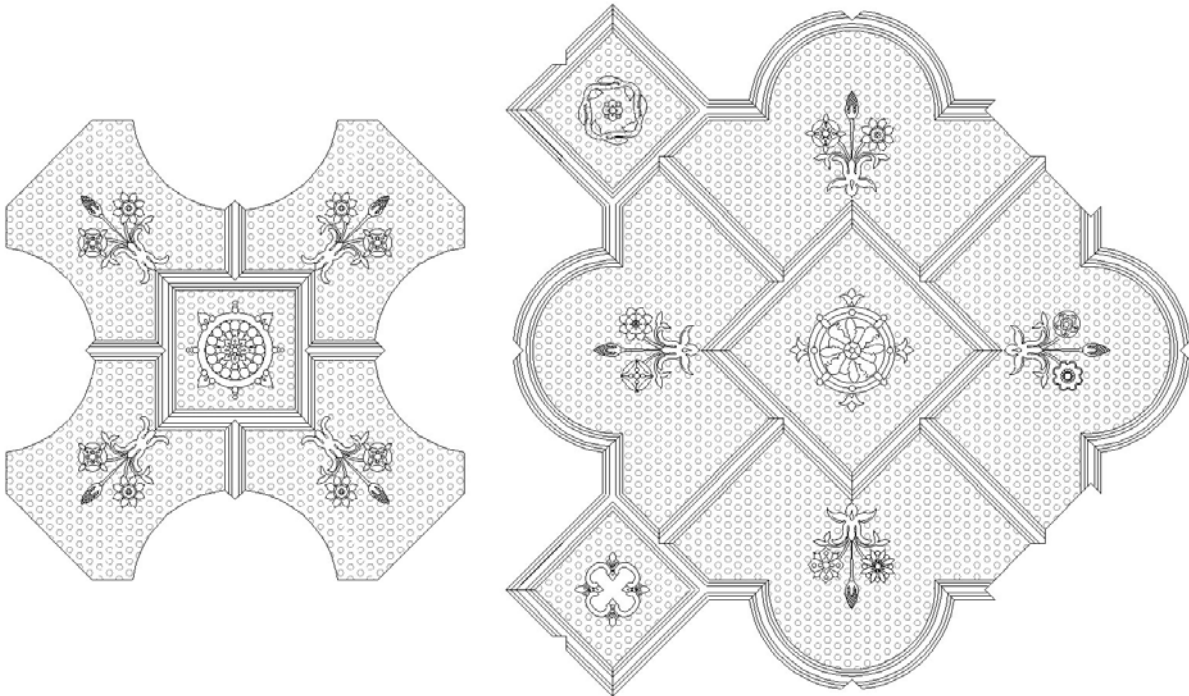
Hammered Background with Ornamentation  
Each Panel is 36" Square With a 1½" Relief  
Approximate Group Size As Shown: 12'6" x 9'6"

DECORATORS SUPPLY CORPORATION

phone: 800.792.2093 • fax: 773.847.6357 • [www.DecoratorsSupply.com](http://www.DecoratorsSupply.com)



## Old English Ceiling Panel Illustration of Large and Small Panels



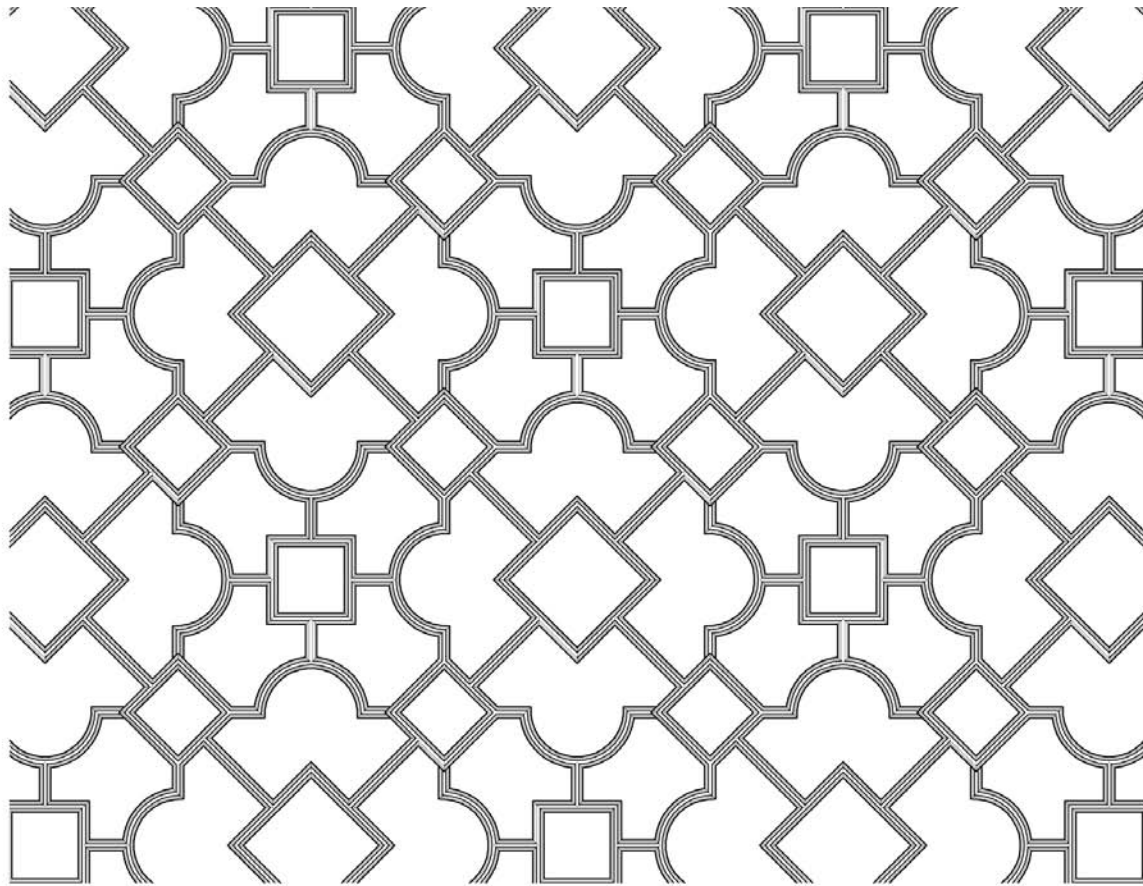
Panels D and E  
Combined Size is 18 Square Feet  
Sold Separately, Assembly Required



DECORATORS SUPPLY  
CORPORATION

# 25001C

## Old English Ceiling Panel



Smooth Background with No Ornamentation  
Large & Small Panel with 36" Repeat and a 1½" Relief  
Approximate group size as shown: 9'6" x 6'6"

DECORATORS SUPPLY CORPORATION

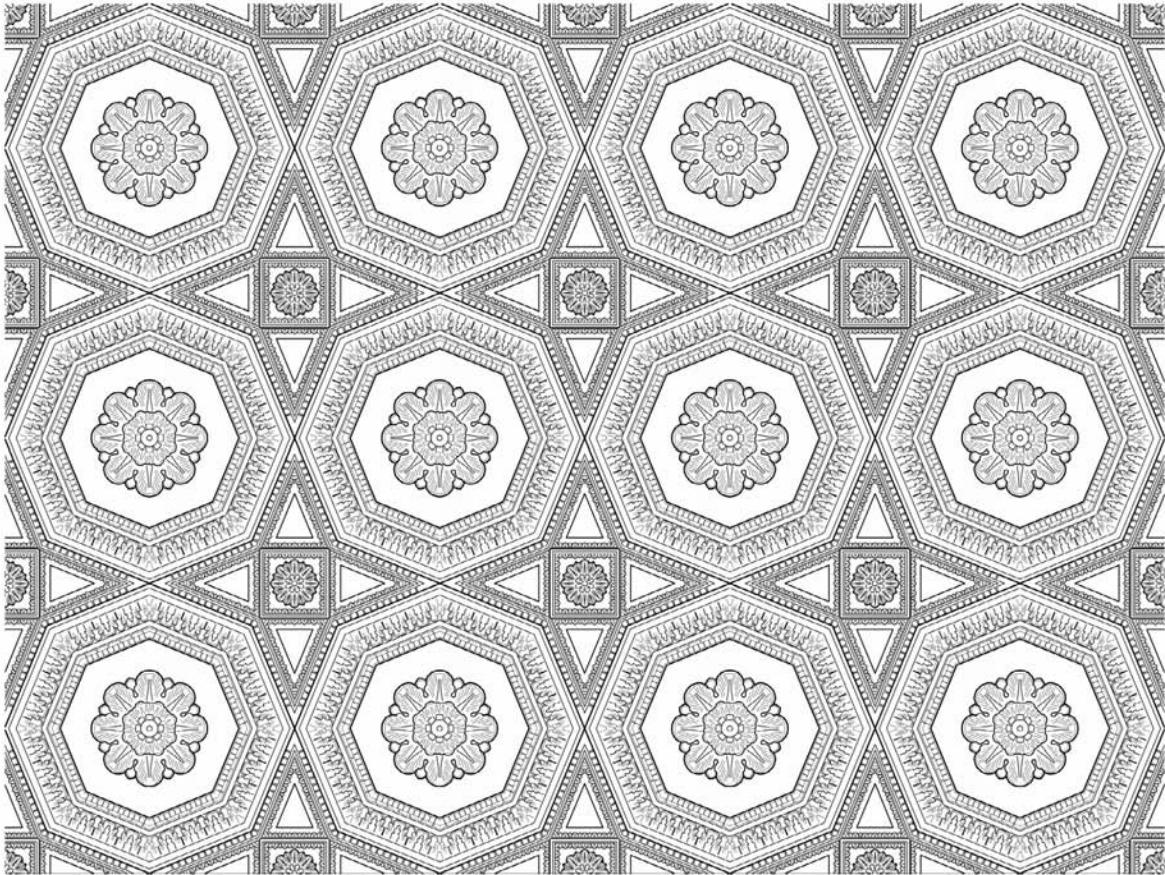
phone: 800.792.2093 • fax: 773.847.6357 • [www.DecoratorsSupply.com](http://www.DecoratorsSupply.com)

# 25009

DECORATORS SUPPLY  
CORPORATION



## Italian Coffered Ceiling Panel



Octagon & Star in Each Panel - With Center Rosette  
Each Panel is 4 Square Feet with a 1 3/4" Relief  
Approximate Group Size As Shown: 8'0" x 6'0"

DECORATORS SUPPLY CORPORATION

phone: 800.792.2093 • fax: 773.847.6357 • [www.DecoratorsSupply.com](http://www.DecoratorsSupply.com)

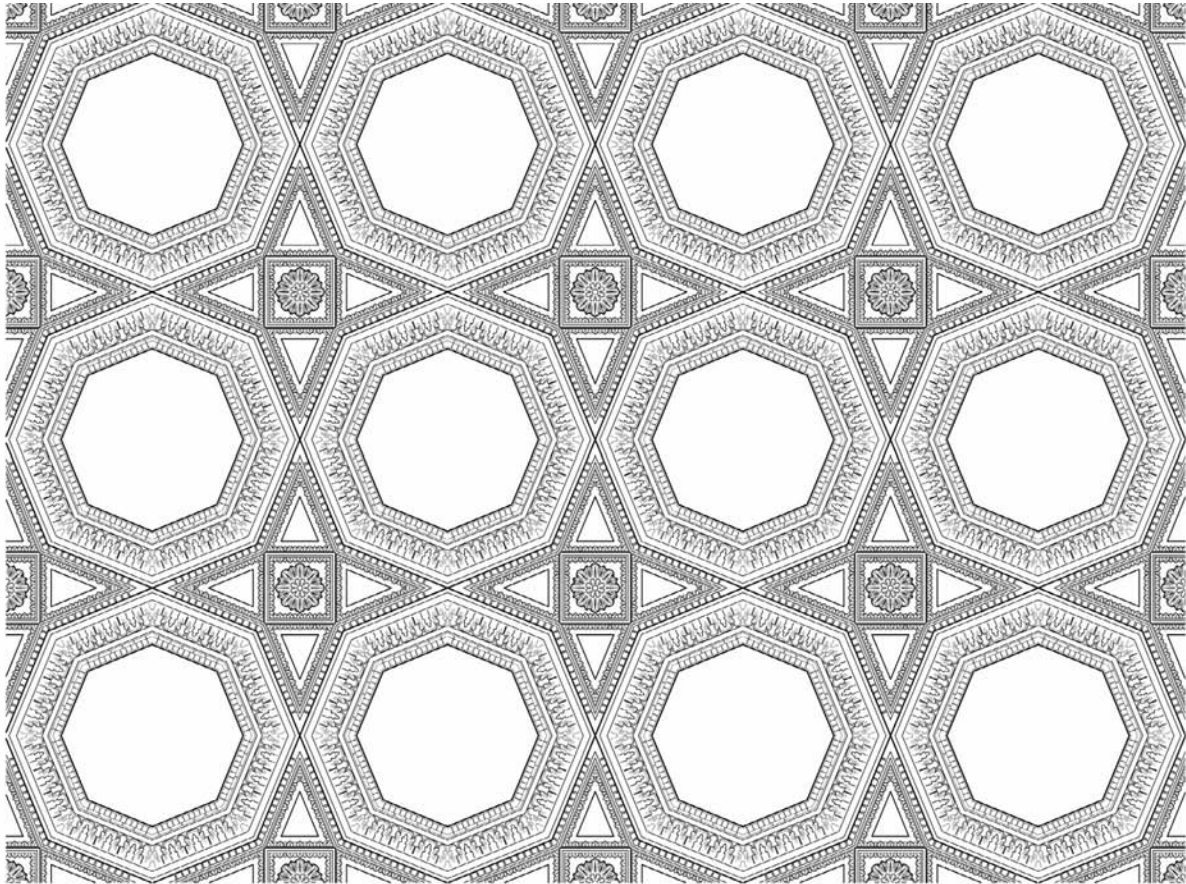




DECORATORS SUPPLY  
CORPORATION

# 25009A

## Italian Coffered Ceiling Panel



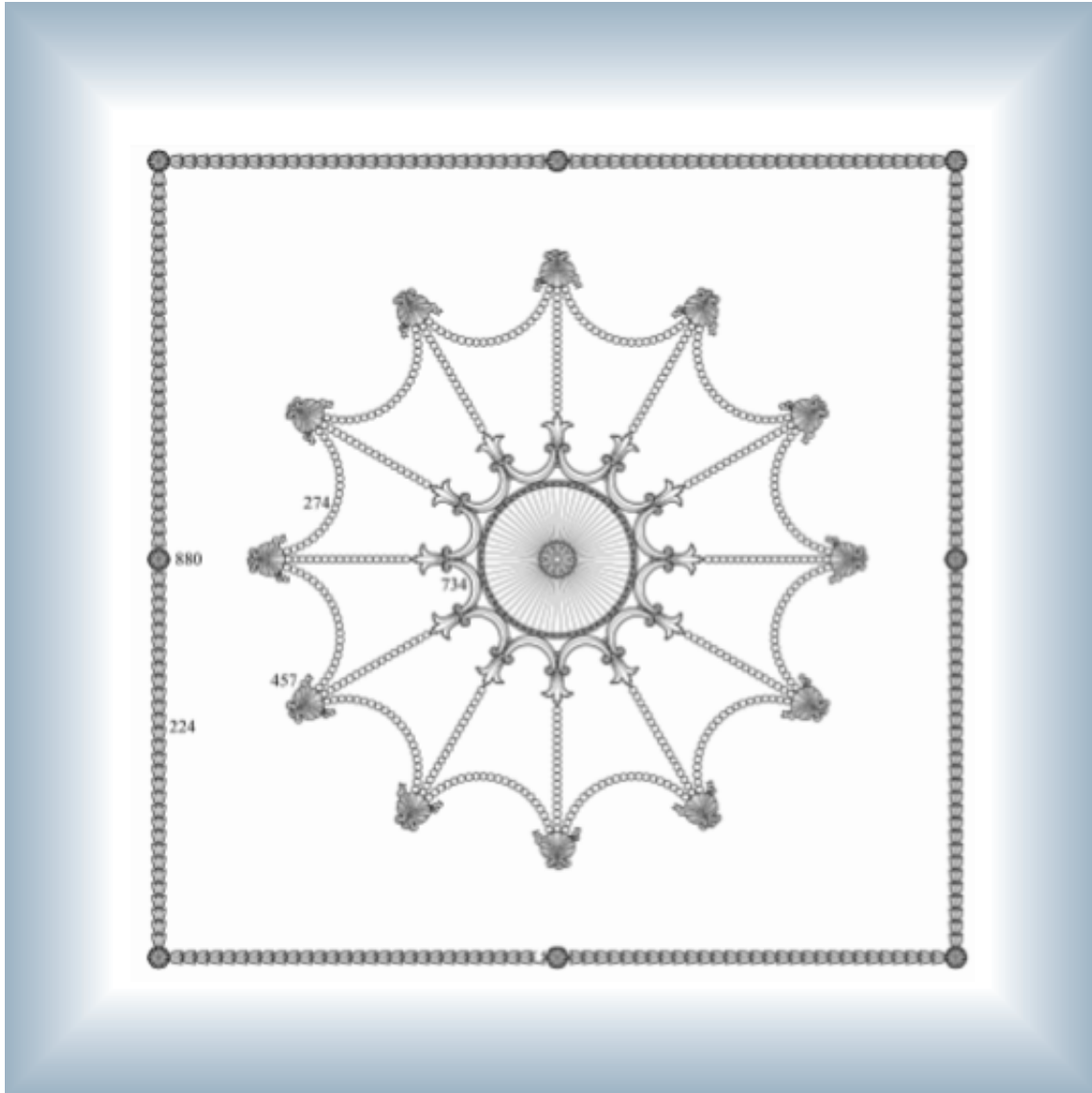
Octagon & Star in Each Panel - Without Center Rosette  
Each Panel is 4 Square Feet - 1 $\frac{3}{4}$ " Relief  
Approximate Group Size As Shown: 8'0" x 6'0"

DECORATORS SUPPLY CORPORATION

phone: 800.792.2093 • fax: 773.847.6357 • [www.DecoratorsSupply.com](http://www.DecoratorsSupply.com)



## Colonial Ceiling Group

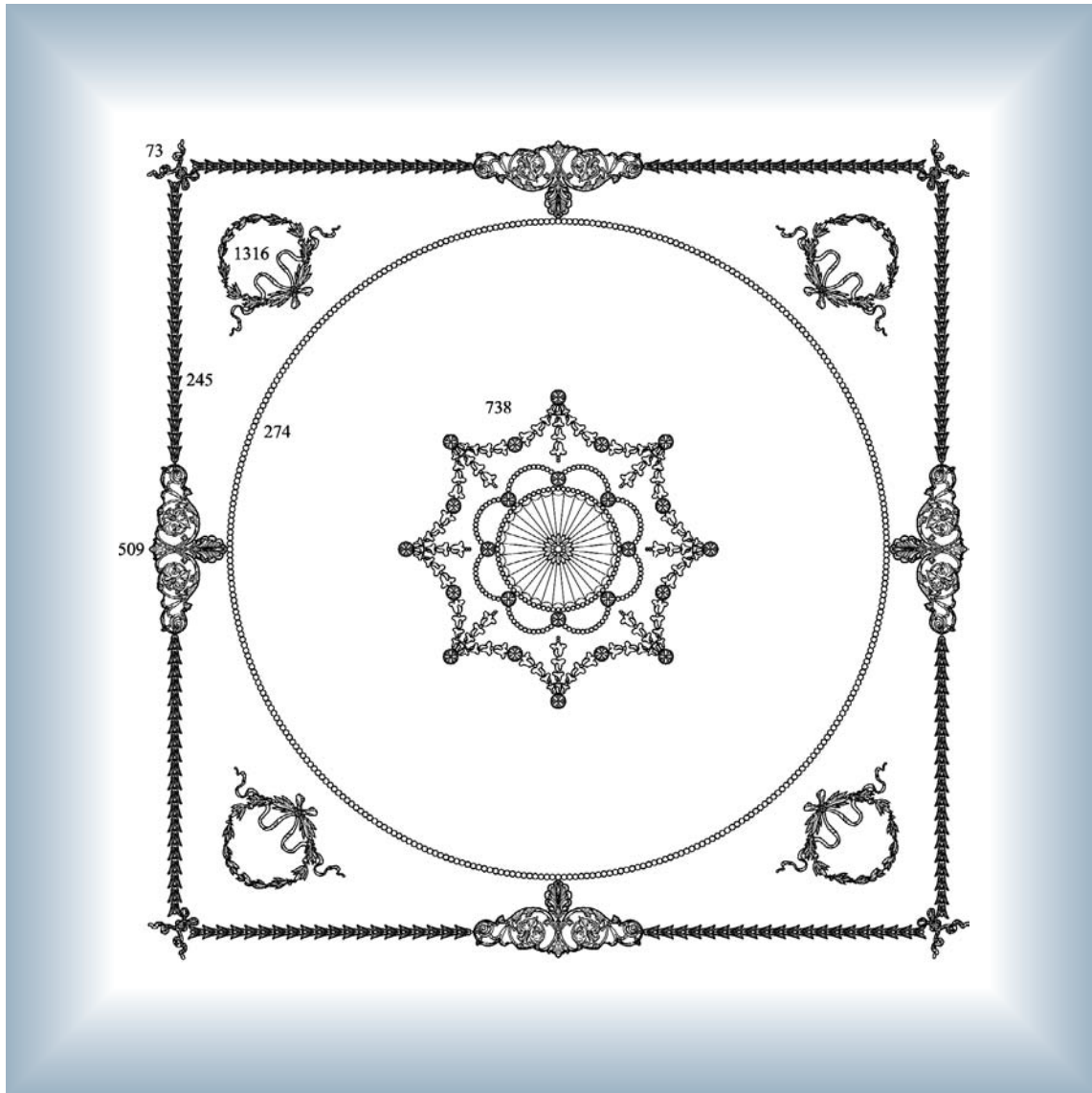


Center medallion #734-1 is 25" in diameter

Size of group can be modified. Arrangement as shown approximately 5'9" x 5'9"  
Extension of bead #274 with scalloped bands can be modified to your requirements  
Can be ordered as shown or modified by eliminating unwanted components



## Colonial Ceiling Group



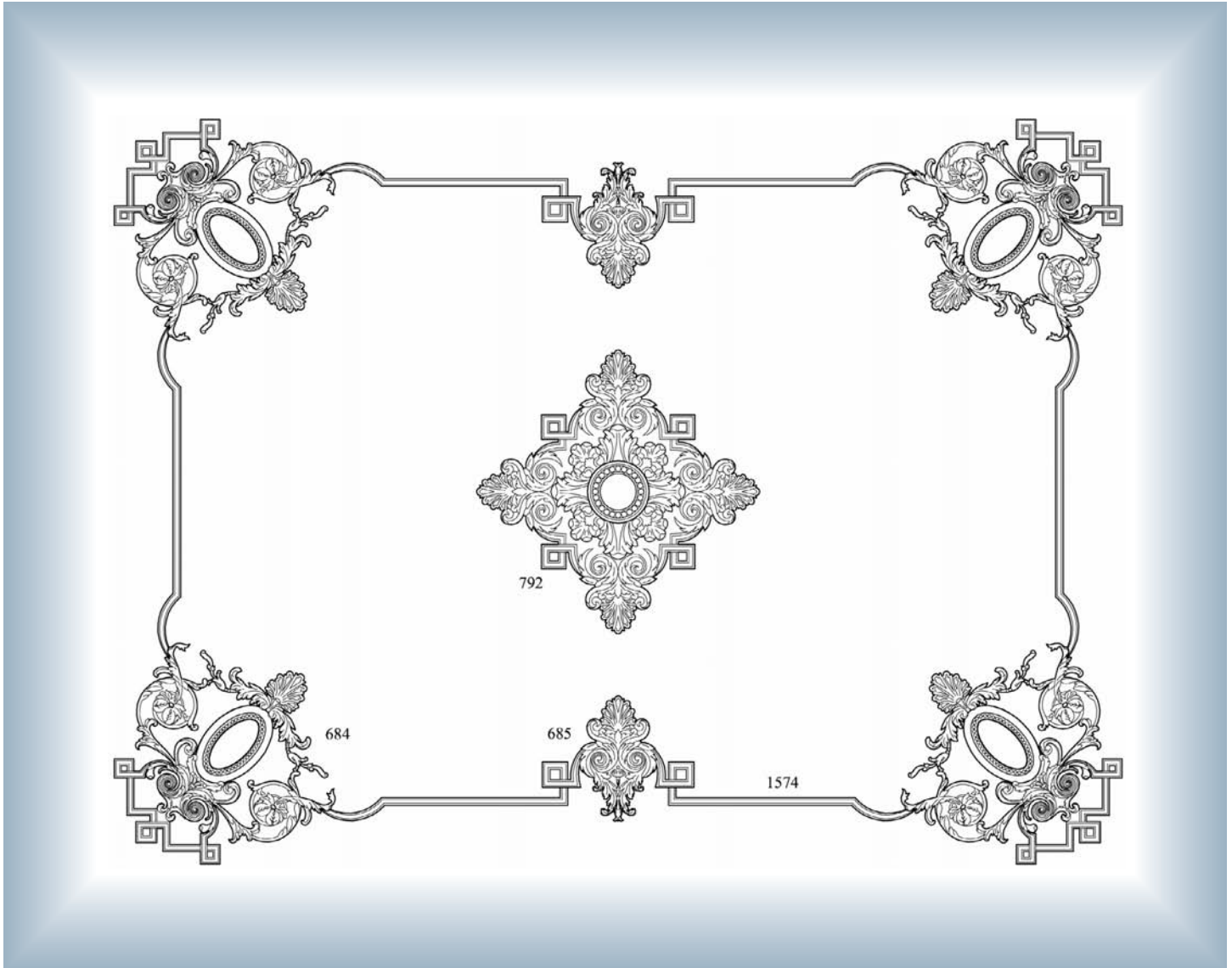
Center Medallion #738 is 35" In Diameter

Size of group can be modified. Arrangement as shown approximately 7'0" x 7'0"

Can be ordered as shown or modified by eliminating unwanted components



## Louis XIV Ceiling Group



Center Medallion #792 is 38½" Diagonal

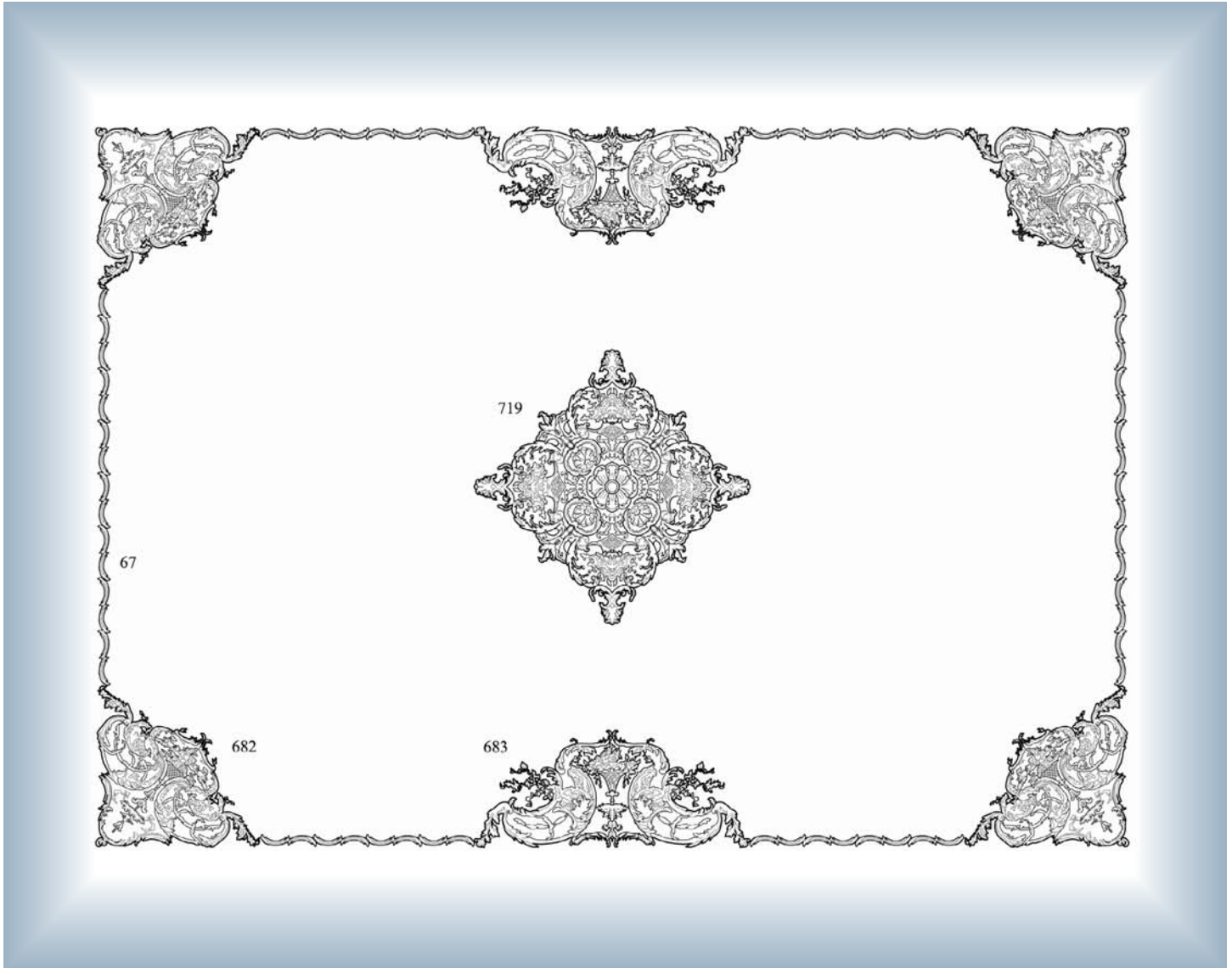
Corner #684-1 is 30" x 30" x 32" Side #685 is 17" x 17"

Size of group can be modified. Arrangement as shown approximately 11'0" x 8'0"

Can be ordered as shown or modified by eliminating unwanted components



## Louis XV Ceiling Group



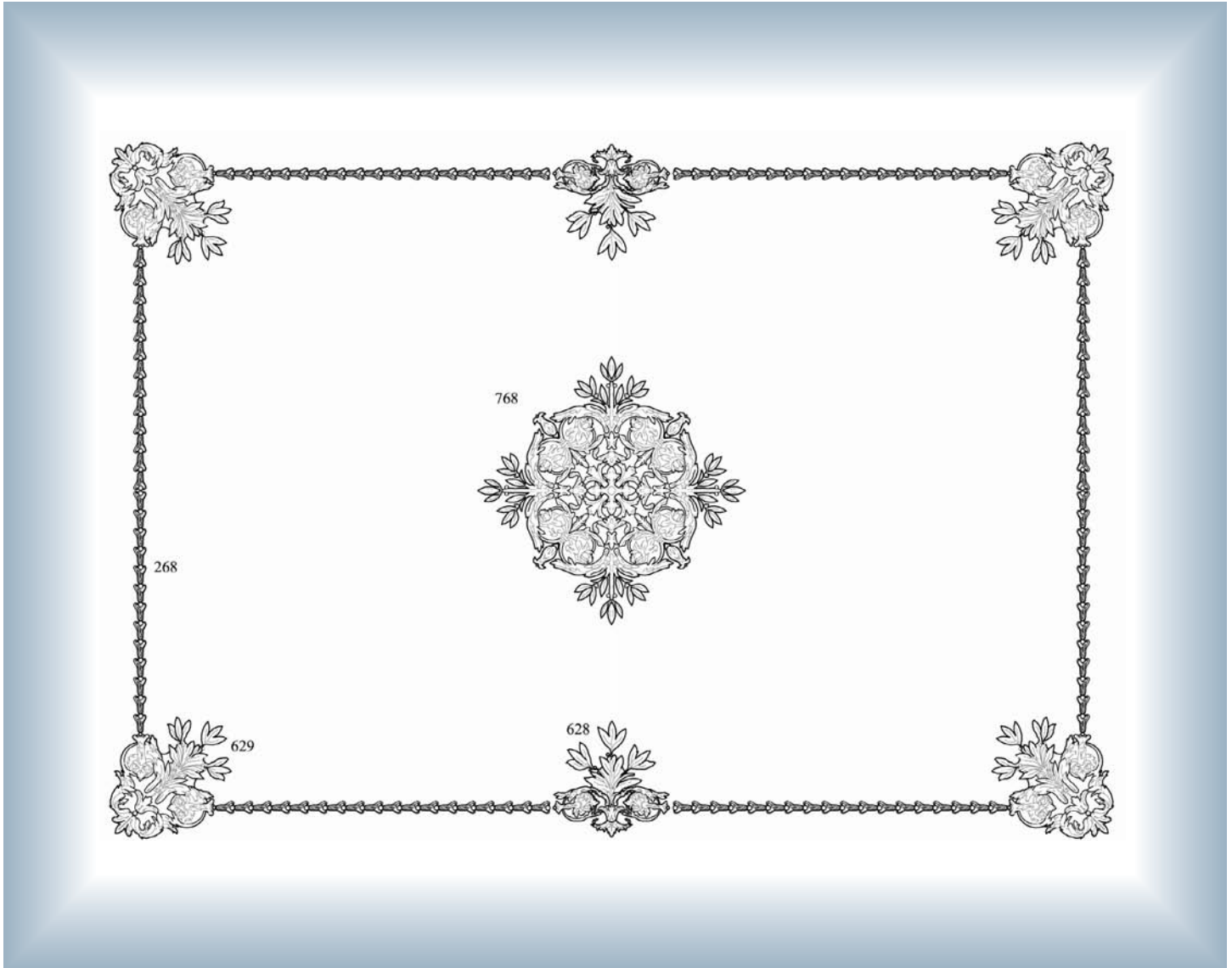
Center Medallion #719 is 34" Diagonal

Corner #682 is 20" x 20" x 20" Side #683 is 34" x 14½"

Size of group can be modified. Arrangement as shown approximately 9'6" x 7'0"

Can be ordered as shown or modified by eliminating unwanted components

## Louis XIV Ceiling Group



Center Medallion #768 is 30" In Diagonal

Corner #629 is 12" x 12" x 12"    Side #628 is 13" x 13"

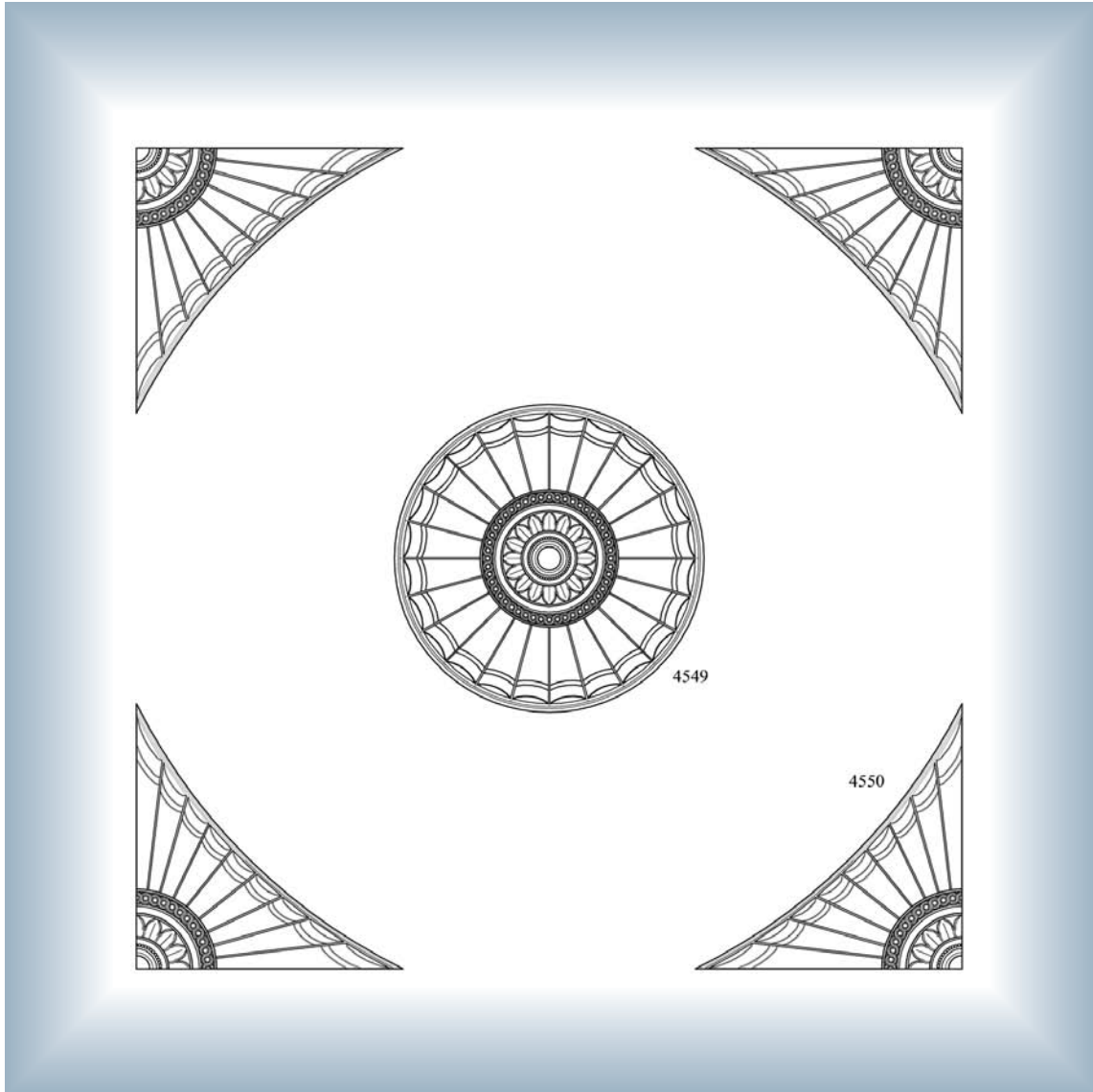
Size of group can be modified. Arrangement as shown approximately 10'6" x 7'6"

Can be ordered as shown or modified by eliminating unwanted components





## Adam Ceiling Group

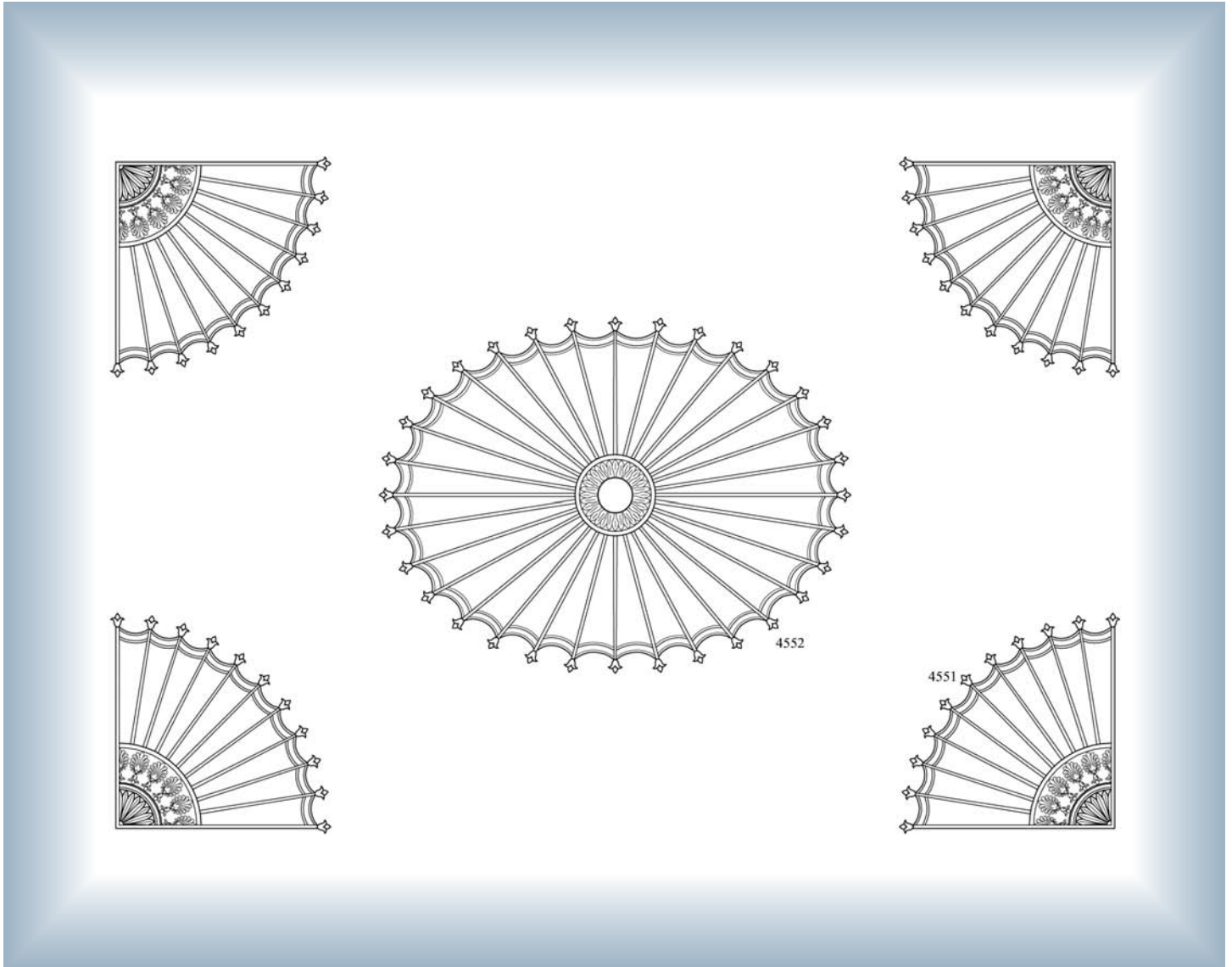


Center Medallion #4549 is 36" In Diameter

Corner Medallion #4550 is 31" x 31"

Size of group can be modified. Arrangement as shown approximately 7'6" x 7'6"

## Adam Ceiling Group



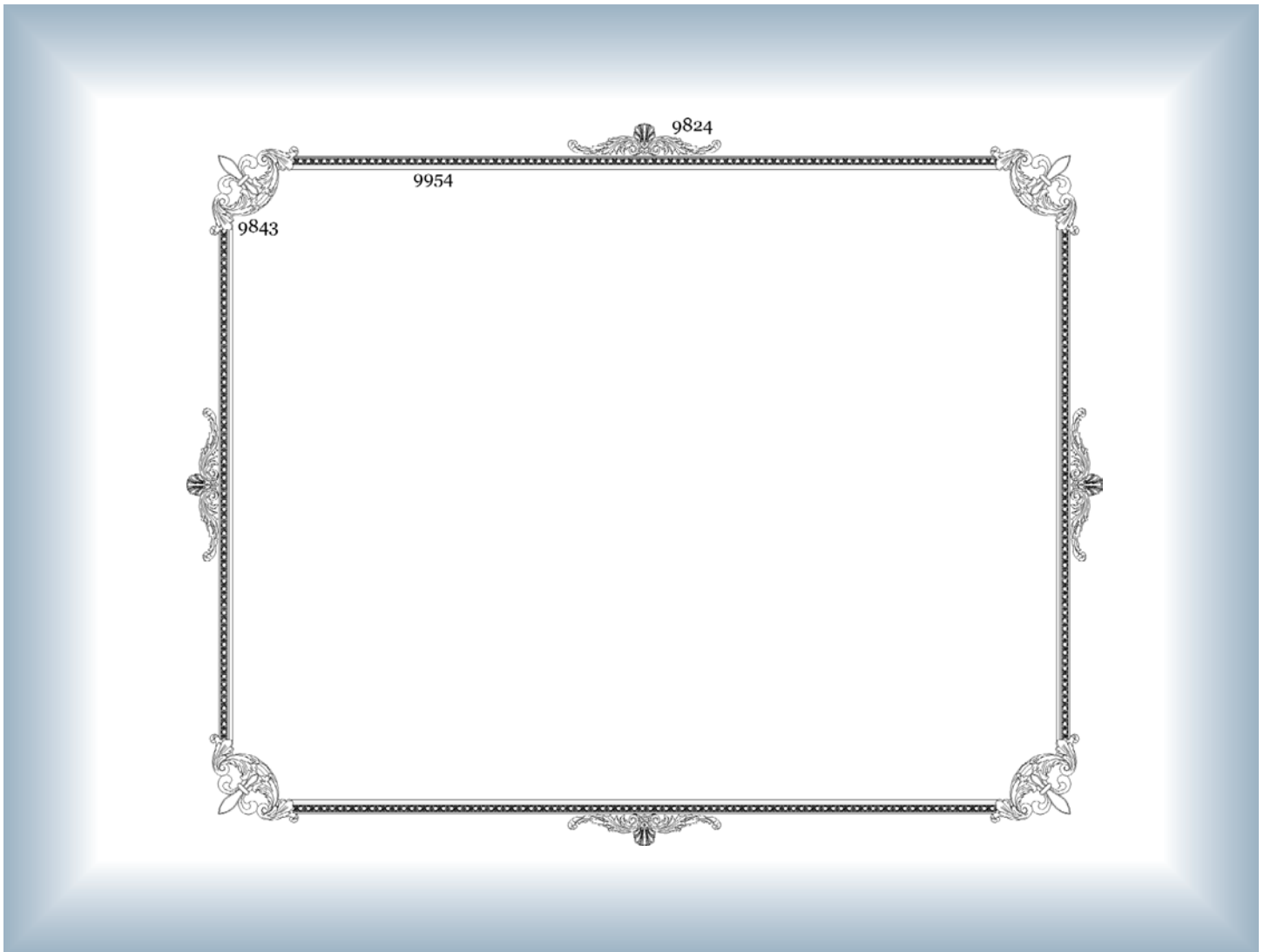
Center Medallion #4552 is 68" x 51¼"

Corner Medallion #4551 is 31" radius

Size of group can be modified. Arrangement as shown approximately 11'6" x 7'8"



## Louis XIV Ceiling Group



Corner ornament #9843 is 11" x 11" with 1¼" relief

Center ornament #9824 is 4" x 19" with 1" relief

Poplar Panel Moulding With Egg & Dart Onlay #9954 is 1<sup>11</sup>/<sub>16</sub>" with <sup>15</sup>/<sub>16</sub>" relief

Size of group can be modified. Arrangement as shown approximately 10' x 8'



9824



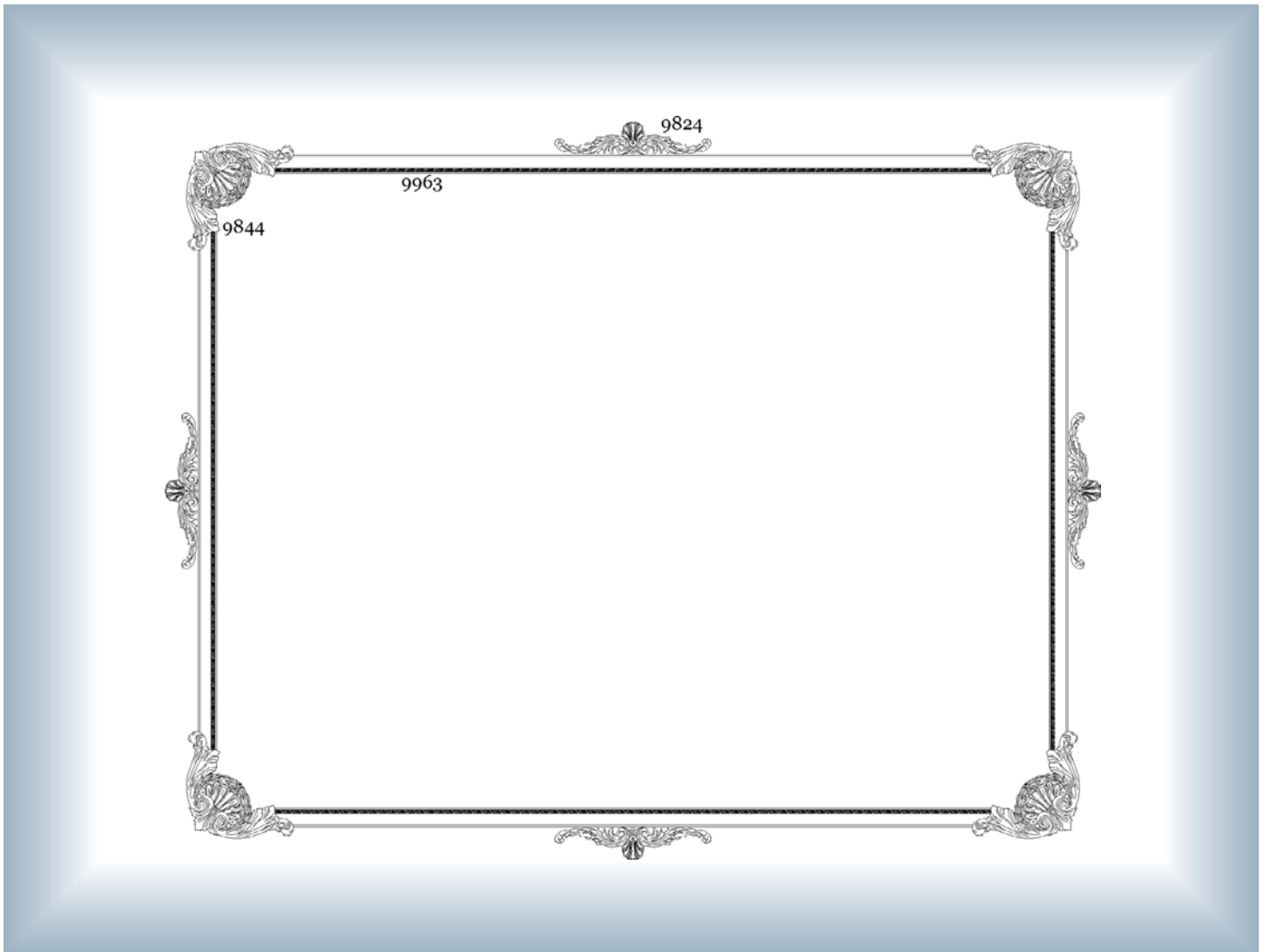
9843



9954



## Louis XVI Ceiling Group



Corner ornament #9844 is 13" x 13" with 1½" relief

Center ornament #9824 is 4" x 19" with 1" relief

Poplar Panel Moulding With Leaf & Berry Onlay #9963 is 2¼" with 1¹⁄₁₆" relief

Size of group can be modified. Arrangement as shown approximately 10' x 8'



9824



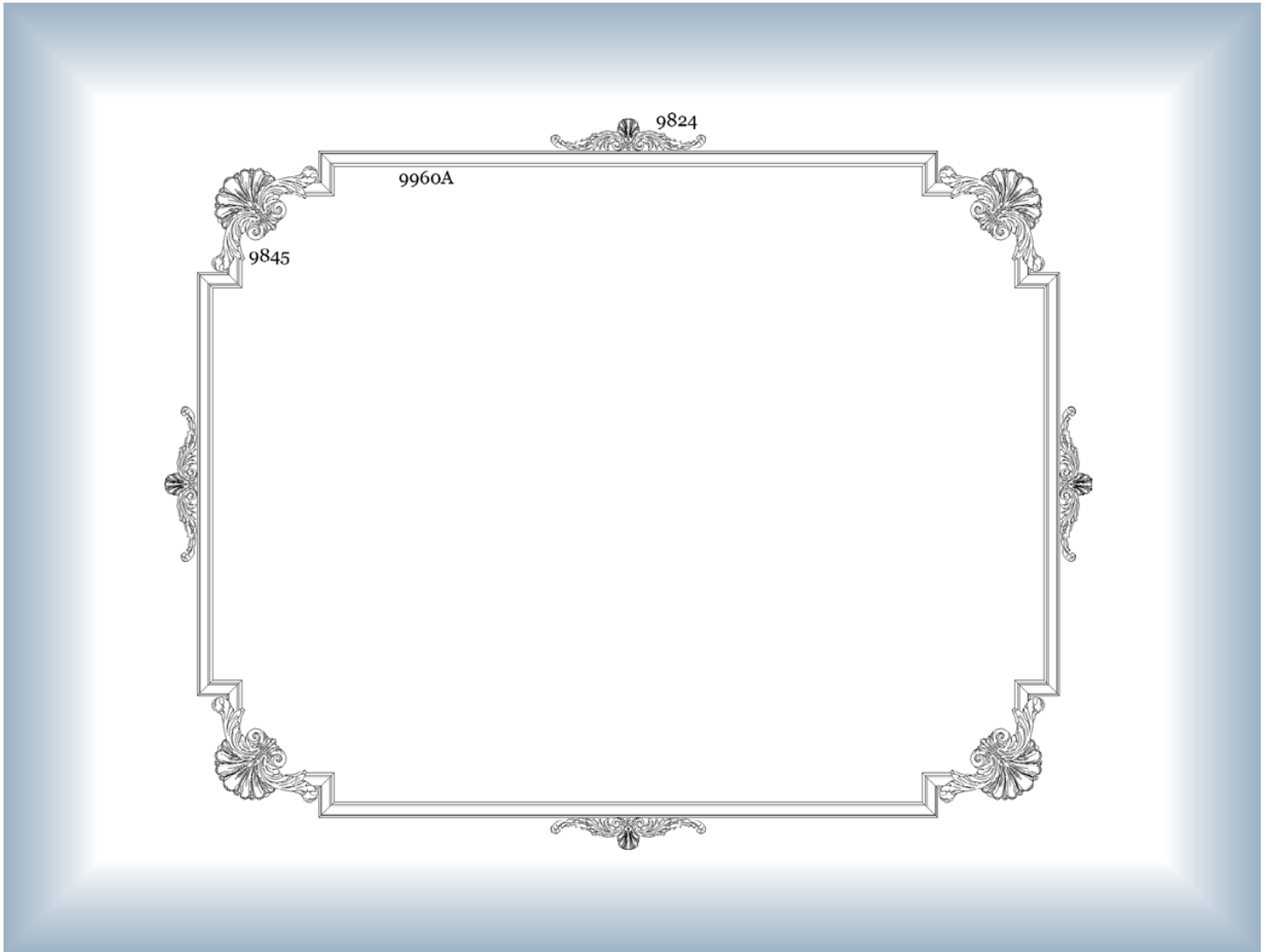
9844



9963



## Louis XIV Ceiling Group



Corner ornament #9845 is 13" x 13" with 1½" relief  
 Center ornament #9824 is 4" x 19" with 1" relief  
 Poplar Panel Moulding #9960A is 1⅞" with 1" relief. Note: No shell only.  
 Size of group can be modified. Arrangement as shown approximately 10' x 8'



9824



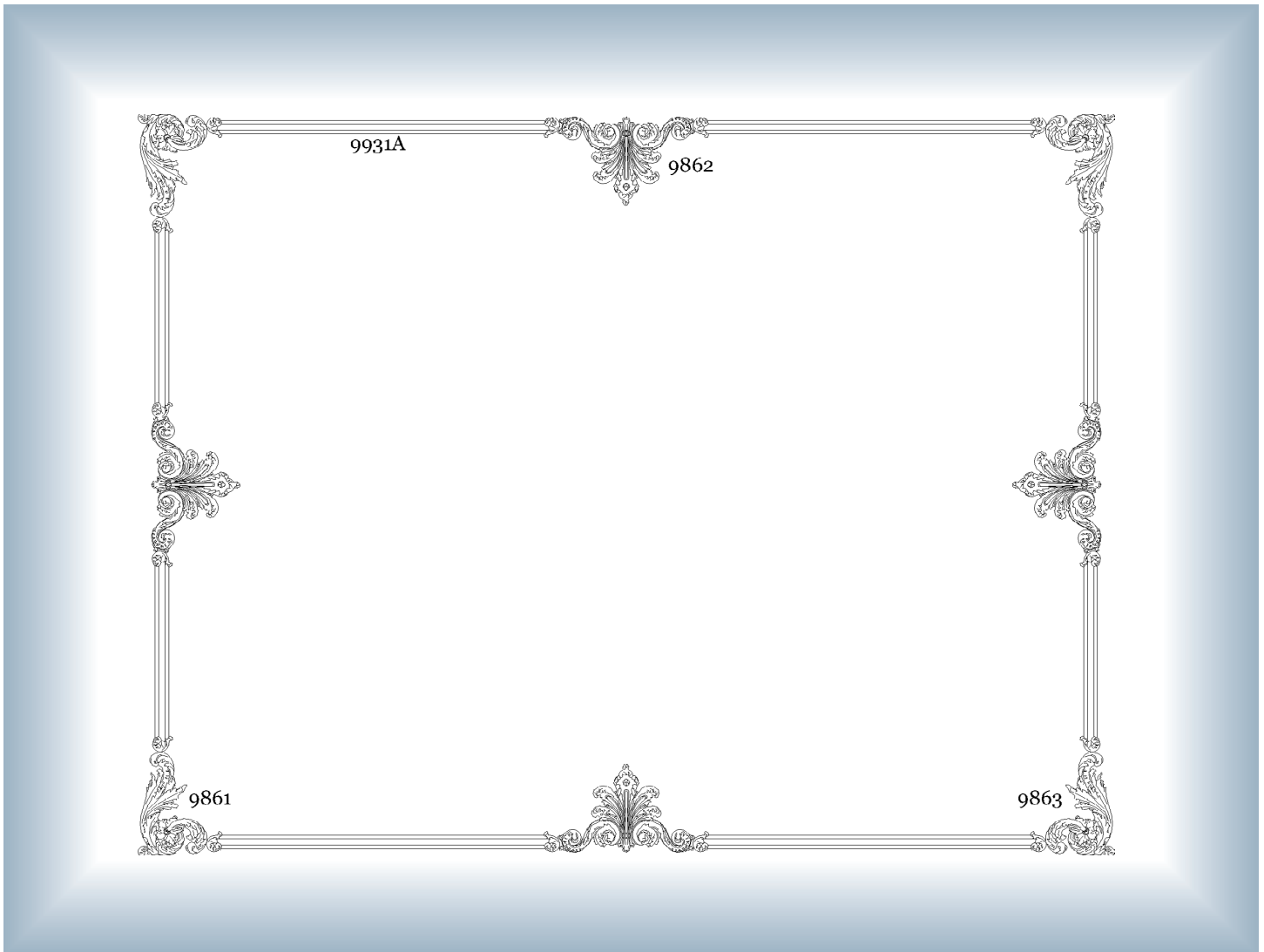
9845



9960A



## Louis XV Ceiling Group



Corner ornaments #9861 and #9863 is 13½” x 9½” with 1¼” relief

Center ornament #9862 with cusps is 10” x 18½”

Poplar Panel Moulding #9931A is 1½” with ⅝” relief. Note: No Crossband.  
Size of group can be modified. Arrangement as shown approximately 10’ x 8’



9861



9862



9863



9931A

DECORATORS SUPPLY CORPORATION

phone: 800.792.2093 • fax: 773.847.6357 • [www.DecoratorsSupply.com](http://www.DecoratorsSupply.com)







# Our Full Line of Catalogs

## Cast Plaster Ornaments



Cornices, moldings, pediment ornaments and grilles, made of hard plaster of Paris and properly reinforced with hemp fibre and steel rods for exceptional durability. Our Plaster Ornament Catalog is both an idea-starter and a problem-solver – illustrating hundreds of exceptional design elements in styles ranging from Classic through Renaissance, Baroque, Georgian English, and French Empire to Colonial and Modern.

**Order Catalog 130**

## Ornaments for Woodwork and Furniture



Select from thousands of composition appliques and linear mouldings which are illustrated in our historic 305 page art book. Imagine, design and create unique projects using our staggering assortment of classical rosettes, festoons, wreaths, shields, running mouldings, valances, pilasters and finials. This “made to order” ornamentation will accept a variety of finishes and can be applied to curved surfaces.

**Order Catalog 124**

## Period Capitals and Brackets



Capitals for both columns and pilasters and brackets for varied applications add distinction to both commercial and residential buildings. Choose wood embellished with composition (used with woodwork), or handcast fiber reinforced plaster (with plaster finish). Our catalog offers many sizes and styles, amply illustrated.

**Order Catalog 127**

## Custom-Built Mantels: Colonials, French, Georgian, Adam



Our mantels are individually built by our own craftsmen, using cabinets-grade materials and carefully applying our individually-produced composition ornaments. Our craftsmen are unexcelled resources for architects, decorators and their clients, assuring fireplaces of enduring beauty. Constructed for natural (stain and varnish) or paint finishes. Customize your mantel, selecting ornaments from our Catalog 124. Specify special sizes and woods if desired.

**Order Catalog 131**

## Authentic Reproductions



Finely-detailed replicas of hand-carved ornaments created in our own studios - many more than one hundred years ago. Executed in our highest tradition of craftsmanship, these carvings are delivered ready to accept stain and varnish, paint or metallic finish. Choose from some 600 illustrated designs, executed with traditional artistry and shown with exact dimensions.

**Order Catalog 129**



**DECORATORS SUPPLY CORP.**

Since 1883

3610 S. Morgan St. / Chicago, IL 60609  
phone (800) 792-2093      fax (773) 847-6357  
[www.DecoratorsSupply.com](http://www.DecoratorsSupply.com)