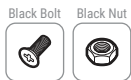
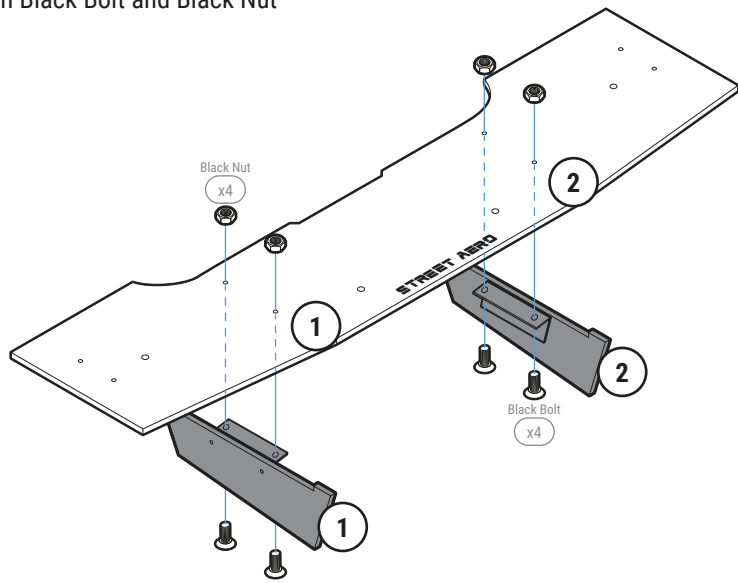


STEP: 1 Assemble Main Panel

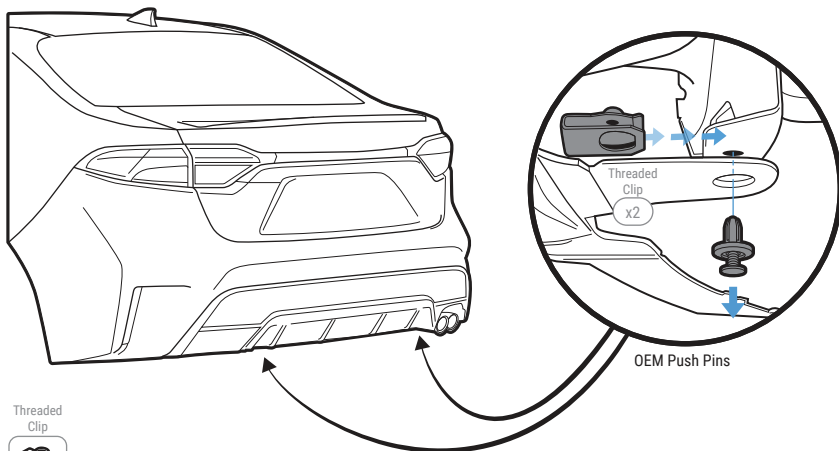
Carefully place Fin 1 and Fin 2 onto the Main Panel
(Match the number on the Fin to the number on the Main Panel)

Secure with Black Bolt and Black Nut



STEP: 2 Remove OEM Push Pins

Remove and replace the 2 OEM Push Pins located under the bumper near the 1st and 4th bumper fin with provided Threaded Clips



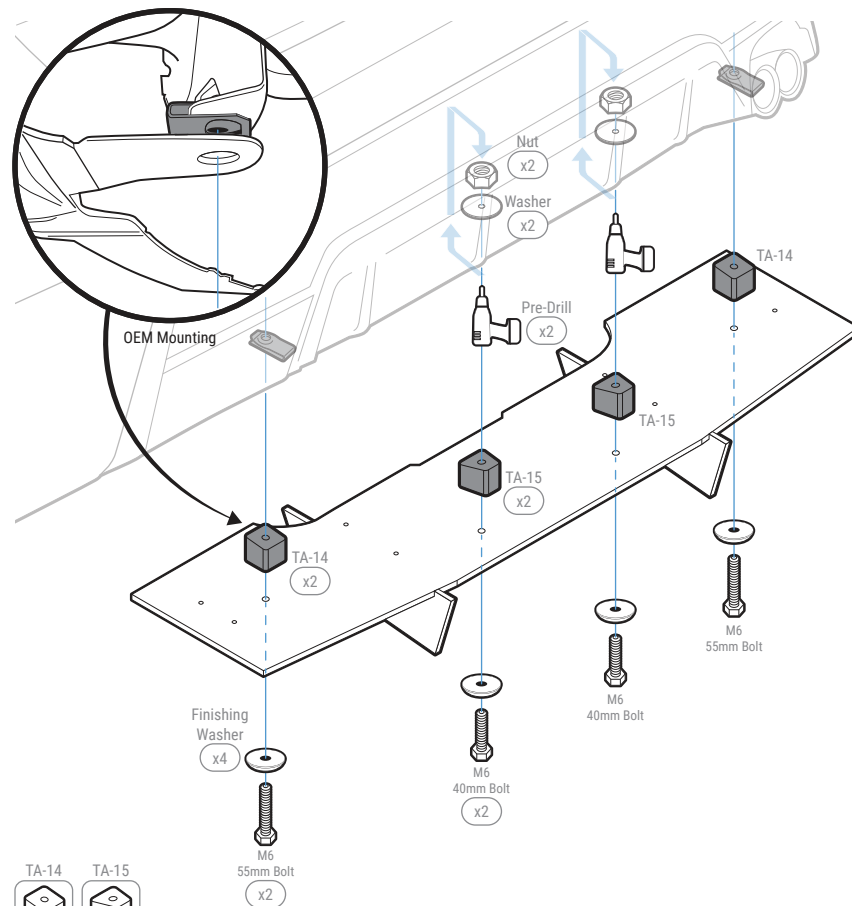
STEP: 3 Mount the Main Panel

Mount the assembled Main Panel to the bumper by securing Mounting Bracket TA-14 to the Threaded Clip, on **STEP: 2**, and secure with M6 55mm Bolt, Finishing Washer

Align Mounting Bracket TA-15 to its correct spot then Mark and Pre-Drill into the bumper
NOTE: Use the hole on top of TA-15 to mark the drill location
NOTE: Mounting Bracket may need to be removed before pre-drilling

Secure Mounting Bracket TA-15 to the bumper with provided M6 40mm Bolt, Finishing Washer, Washer, and Nut

NOTE: Reach under the bumper to place the Washer and Nut inside the bumper



STEP: 4 *Mount the Rear Diffuser*

Remove the OEM Push Pins under the bumper located on the Driver and Passenger Side

Attach the Side Panel to the bumper by securing Mounting Bracket TA-16 to the OEM hole with M6 55mm Bolt, Finishing Washer, Washer, and Nut

Attach the Side Panel to the Main Panel with Black Bolt and Black Nut

NOTE: DO NOT tighten the bolt you will need to remove the Side Panel to pre-drill

Place and align Mounting Bracket TA-17 to its mounting location then mark and pre-drill where it will be mounted to the bumper

NOTE: Use the hole on top of TA-17 to mark the drill location

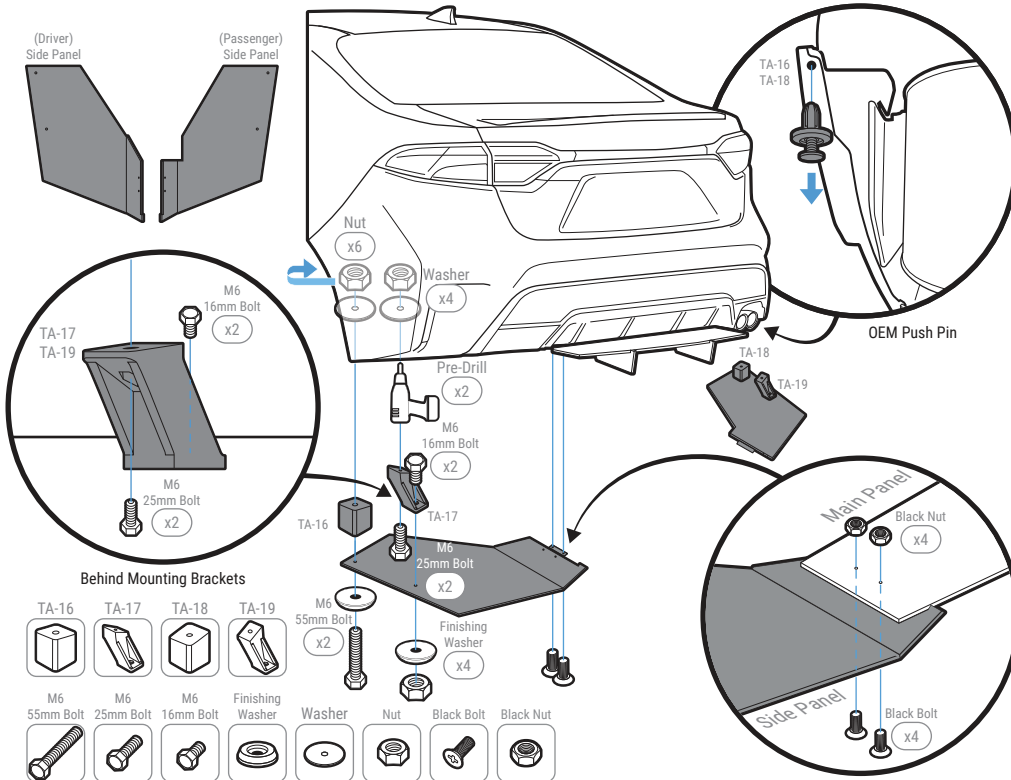
NOTE: Mounting Bracket and Side Panel may need to be removed before pre-drilling

Secure Mounting Bracket TA-17 to the Side Panel with M6 16mm Bolt, Finishing Washer, and Nut

Secure Mounting Bracket TA-17 to the bumper with M6 25mm Bolt, Finishing Washer, Washer, and Nut

NOTE: Reach under or to the side of the bumper to place the Washer and Nut inside the bumper

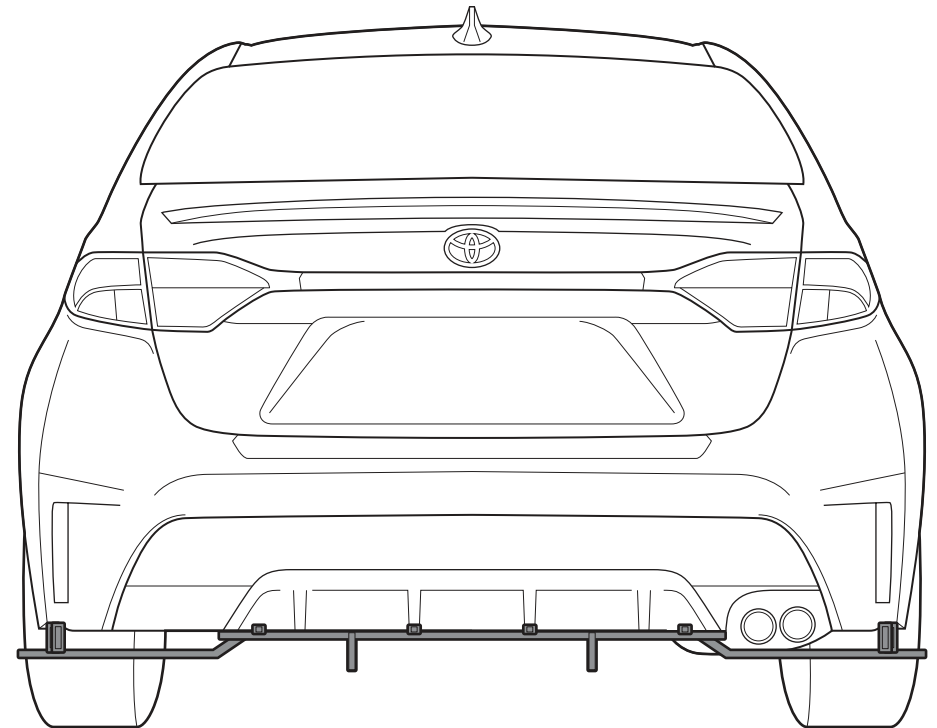
Repeat to install Passenger Side Panel to the Main Panel and bumper



INSTALLATION GUIDE

2020-2022 Toyota Corolla SE

ACM Rear Diffuser



s-rda-toy-04-e1

www.streetaero.com

info@streetaero.com