

STEP: 4 *Mount the Rear Diffuser*

Remove the 2 Push Pins located under the bumper near the rear wheels

NOTE: We also recommend removing the Splash Guard to get access behind the bumper

Attach and secure Mounting Bracket TA-12 to the Side Panel with M6 16mm Bolt, Finishing Washer, and Nut

NOTE: Push the Bolt all the way into the socket to prevent it from falling out

Attach the Side Panel to the Main Panel with Small Bolt and Small Nut

Align the Side Panel to the bumper by positioning the M6 40mm Bolt and Finishing Washer to the OEM Push Pin hole then secure it with Washer and Nut

NOTE: Reach under or to the side of the bumper to place the Washer and Nut inside the bumper

Align Mounting Bracket TA-12 to its mounting location then mark and pre-drill into the bumper where it will be mounted

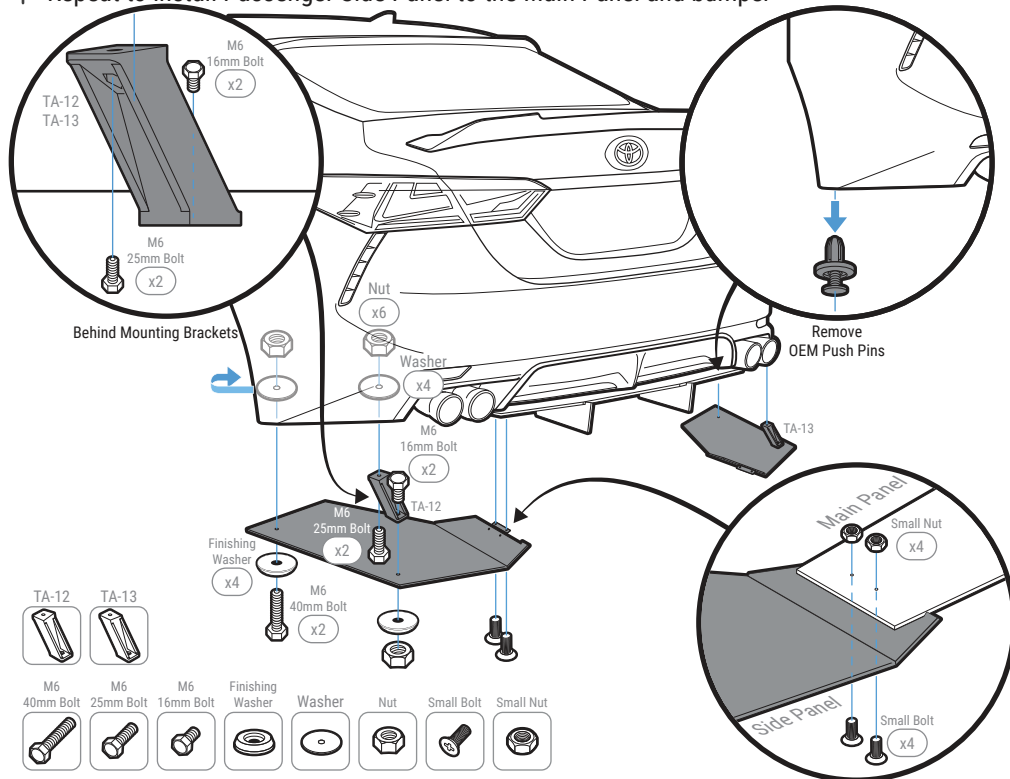
NOTE: Use the hole on top of TA-12 and TA-13 to mark the drill location

NOTE: Side Panel and Mounting Bracket may need to be removed before drilling

Secure Mounting Bracket TA-12 to the bumper with M6 25mm Bolt, Washer, and Nut

NOTE: Reach under or to the side of the bumper to place the Washer and Nut inside the bumper

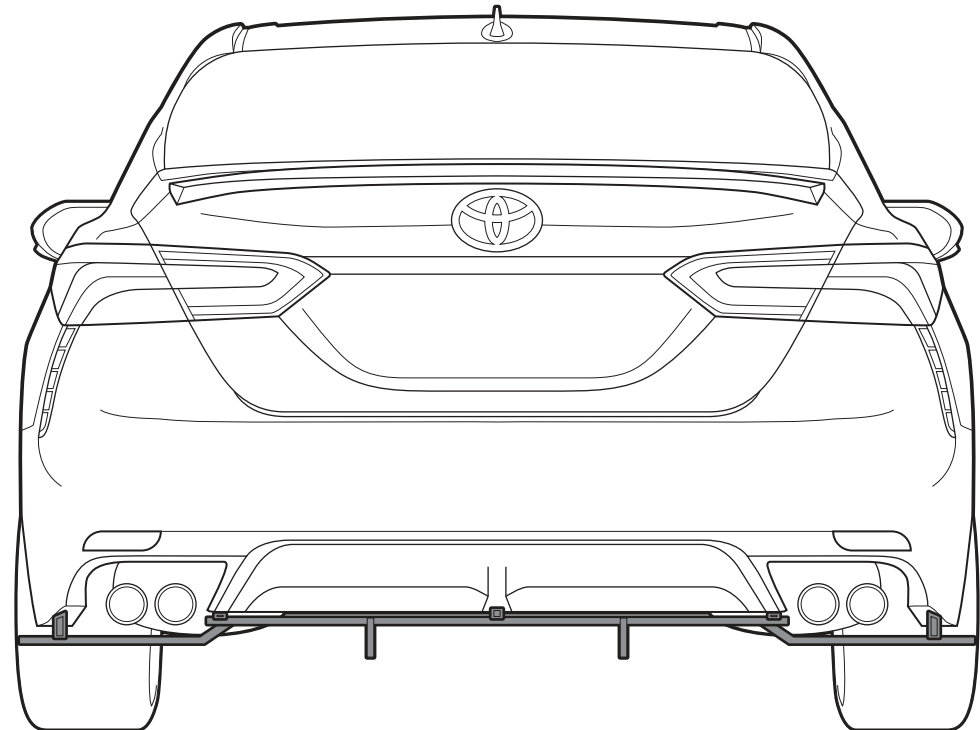
Repeat to install Passenger Side Panel to the Main Panel and bumper



INSTALLATION GUIDE

2018-2023 Toyota Camry SE

ACM Rear Diffuser



s-rda-toy-02-e1

www.streetaero.com

