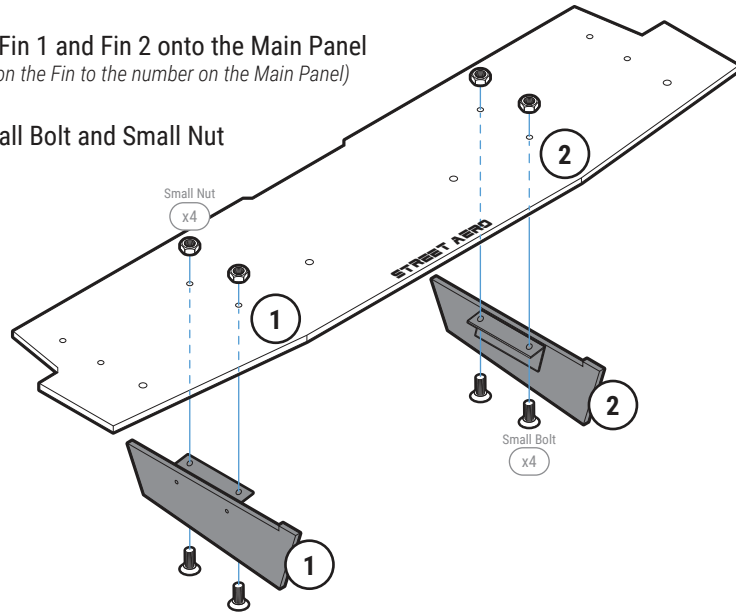


STEP: 1 Assemble Main Panel

Carefully place Fin 1 and Fin 2 onto the Main Panel
(Match the number on the Fin to the number on the Main Panel)

Secure with Small Bolt and Small Nut



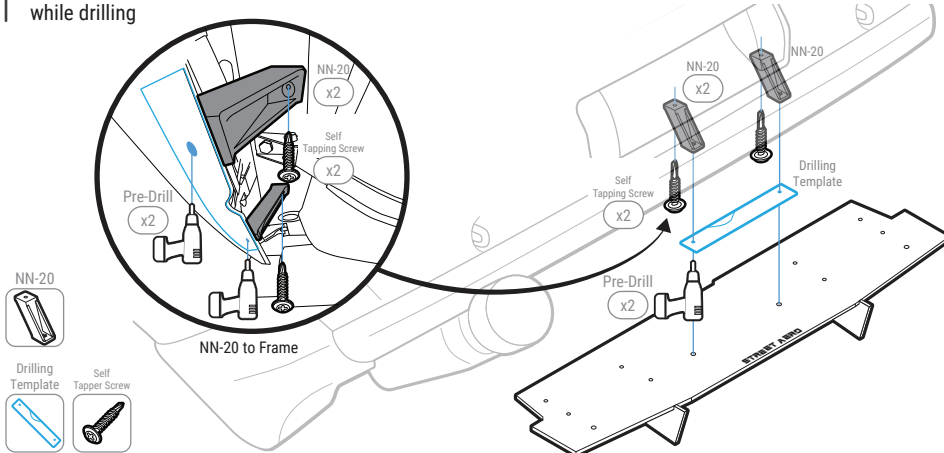
STEP: 2 Remove OEM Push Pins

Align the assembled Main Panel to the bumper
Align and position the Drilling Template to its designated spot
NOTE: Use the Main Panel and bumper to line up the Drilling Template

Use the Drilling Template to mark and pre-drill through the bumper

Rotate and position Mounting Bracket NN-20 to its mounting position then drill into the frame with provided Self Tapper Screw to secure the Mounting Bracket

NOTE: We recommend placing a temporary bolt on the bottom of the Mounting Bracket so it does not shift while drilling



STEP: 3 Install Main Panel

Place Nut into the socket of Mounting Bracket NN-20 from **STEP: 2**

NOTE: Reach inside the bumper to place the Nut into the socket on Mounting Bracket NN-20

Align the Rear Diffuser to the bumper then mark and pre-drill through the bumper where Mounting Bracket NN-21 will be mounted

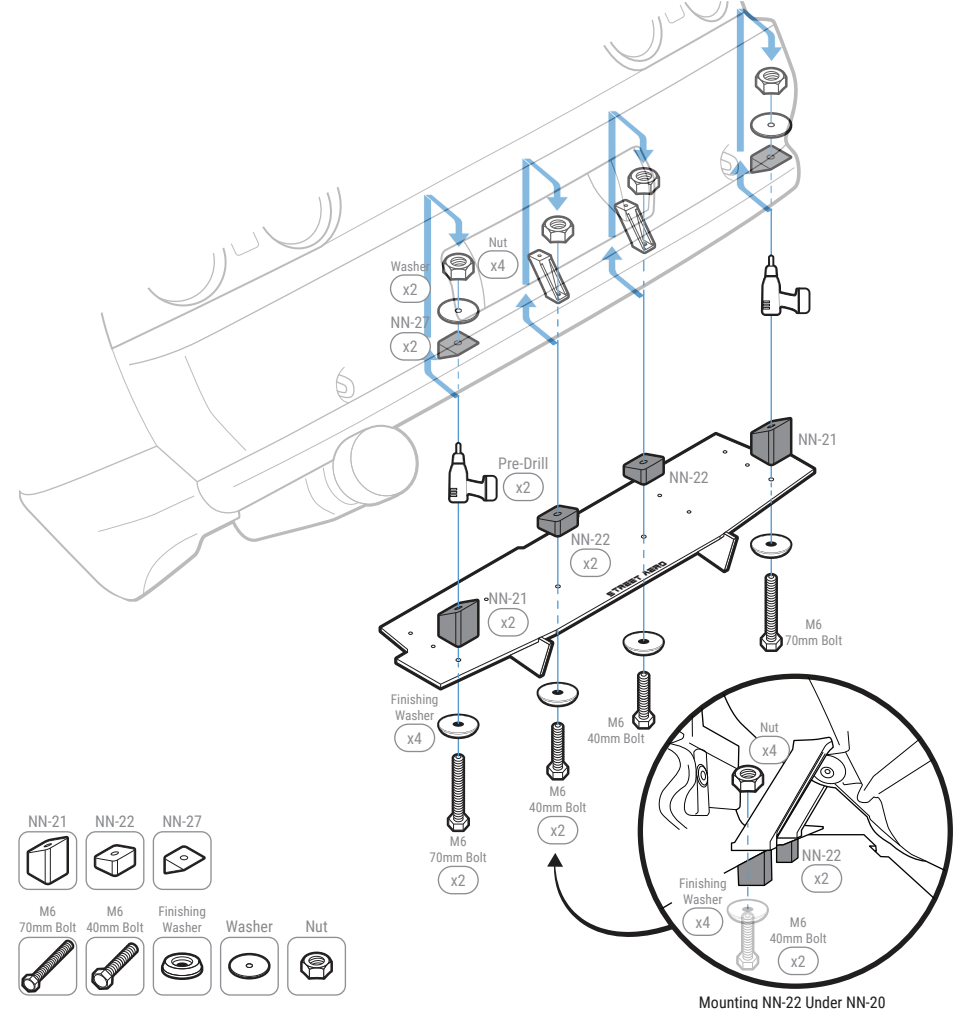
NOTE: Use the already mounted NN-20 from **STEP: 2** as a guide to align the Rear Diffuser

Position and mount the Rear Diffuser to the bumper by securing Mounting Bracket NN-22 with M6 40mm Bolt and Finishing Washer to Mounting Bracket NN-20 from **STEP: 2**

NOTE: make sure the Nut inside Mounting Bracket NN-20 is pushed into the socket to prevent it from falling out

Continue mounting the Rear Diffuser by securing Mounting Bracket NN-21 with M6 70mm Bolt, Finishing Washer, Mounting Bracket NN-27, Washer, and Nut

NOTE: Reach inside the bumper to place Mounting Bracket NN-27, Washer, and Nut on top of NN-21



STEP: 4 *Mount the Rear Diffuser*

Remove the OEM Bolt where Mounting Bracket NN-24 and NN-26 will mount to located inside the bumper near the rear wheels on the left and right side

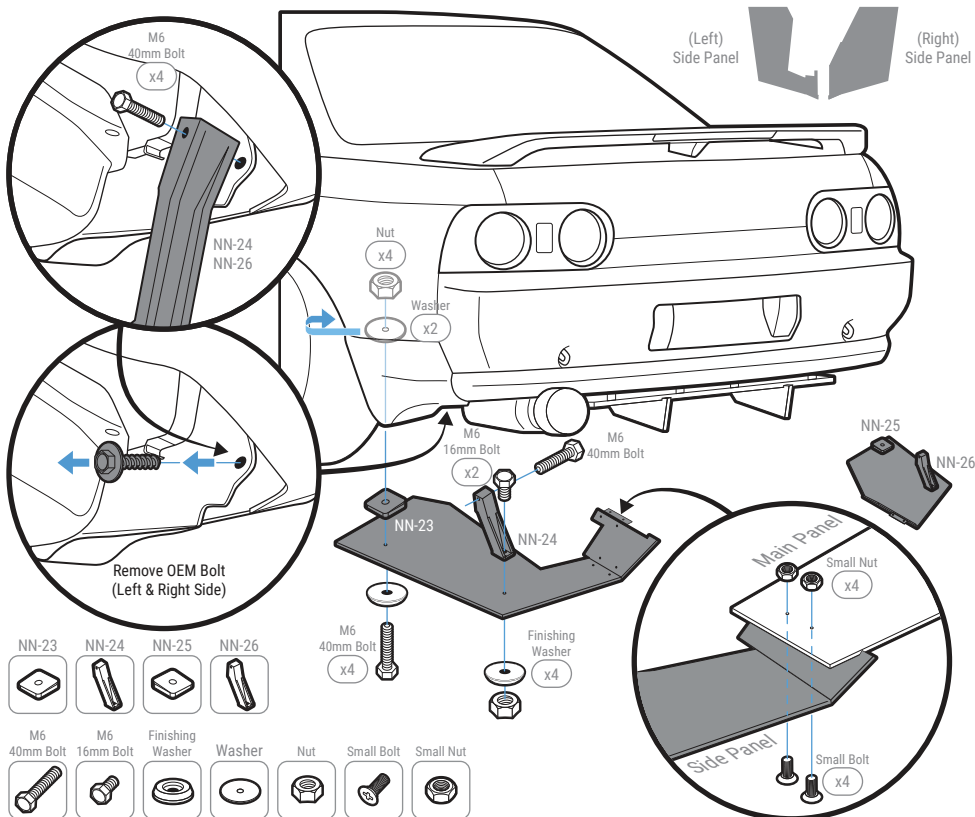
Temporarily connect the Side Panel to the Main Panel with Small Bolt and Small Nut
NOTE: Do Not over tighten the Small Bolt and Nut you will need to remove the Side Panel to pre-drill the bumper

Mark and pre-drill through the bumper where Mounting Bracket NN-23 will mount to
NOTE: Side Panel will need to be removed before drilling
NOTE: Use the hole on the Side Panel to get the drill location on the bumper

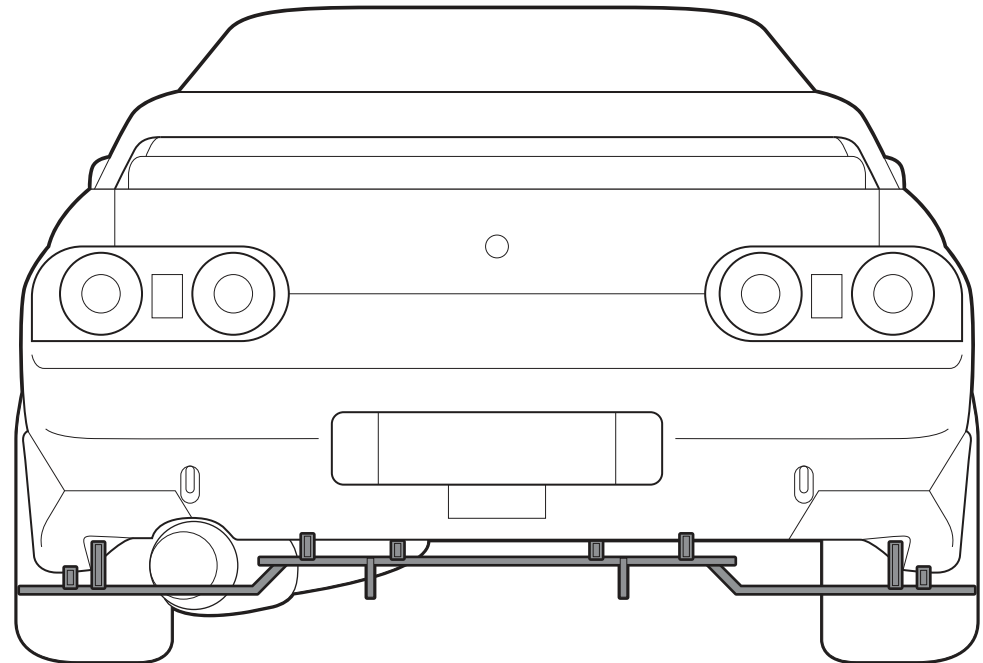
Attach Mounting Bracket NN-24 to the Side Panel with M6 16mm Bolt, Finishing Washer, and Nut then secure Mounting Bracket NN-24 to the OEM hole with M6 40mm Bolt
NOTE: Push the Bolt into the socket on the Mounting Bracket to prevent it from falling out

Mount the Side Panel to the bumper by securing Mounting Bracket NN-23 with M6 40mm Bolt, Finishing Washer, Washer, and Nut
NOTE: Reach inside the bumper to place Washer and Nut inside the bumper

Re-attach the Small Bolt and Small Nut repeat to install other Side Panel to the Main Panel and bumper



INSTALLATION GUIDE
1989-1994 Nissan Skyline
GTR R32
ACM Rear Diffuser



s-rda-nis-13-e1

www.streetaero.com