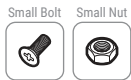
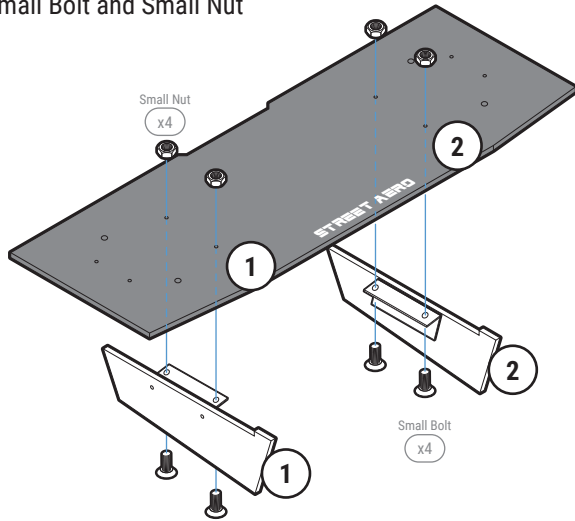


STEP: 1 Assemble Rear Diffuser

Carefully place Fin 1 and Fin 2 onto the Main Panel
(Match the number on the Fin to the number on the Main Panel)

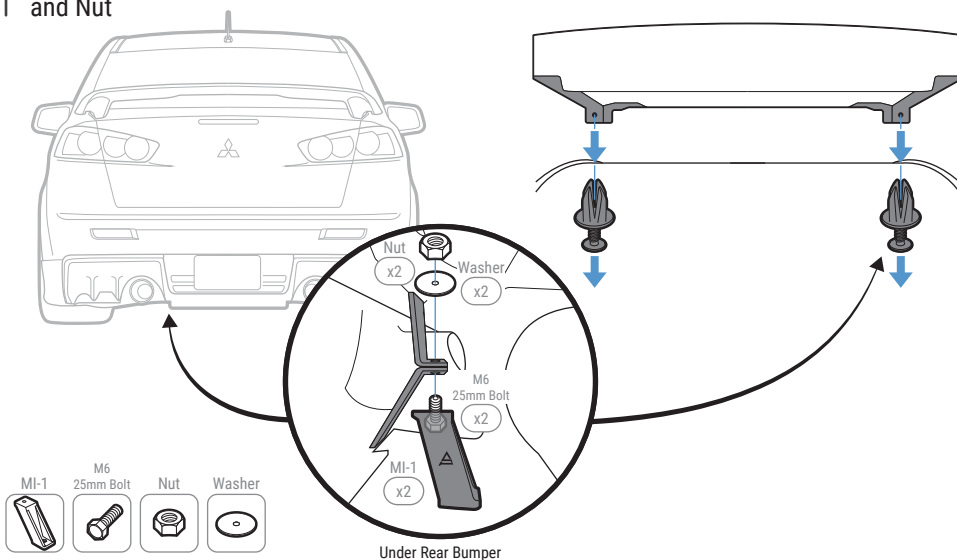
Secure with Small Bolt and Small Nut



STEP: 2 Remove Push Pins

Remove the two Push Pins located under the bumper
(1 on each side near the exhaust)

Securing both Mounting Brackets MI-1 to the 2 OEM hole with M6 25mm Bolt, Washer, and Nut



STEP: 3 Install Mounting Bracket

Use the OEM mounting holes from "STEP: 2" to align and mount the assembled Main Panel to the bumper by securing both Mounting Brackets MI-1 with provided M6 16mm Bolt, Finishing Washer, and Nut

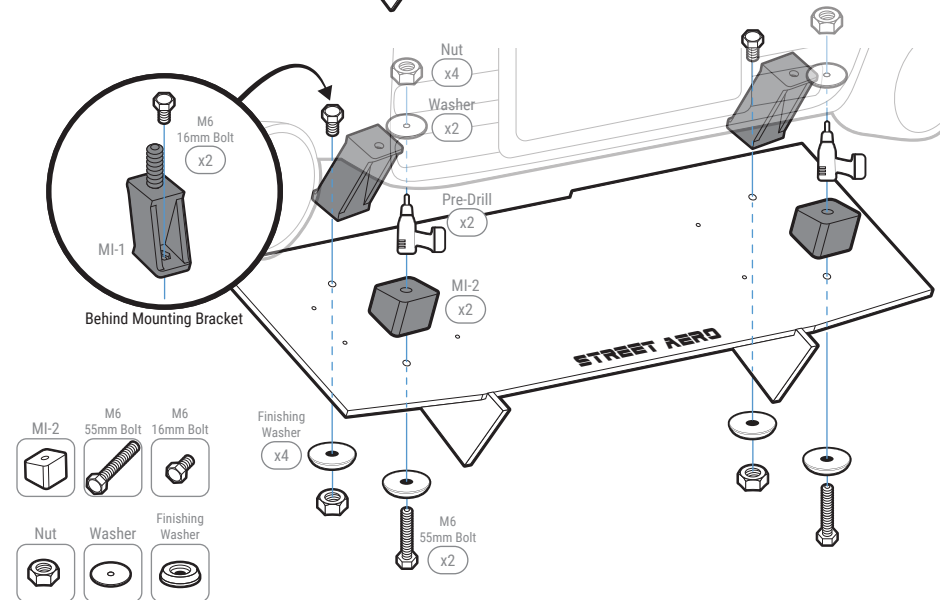
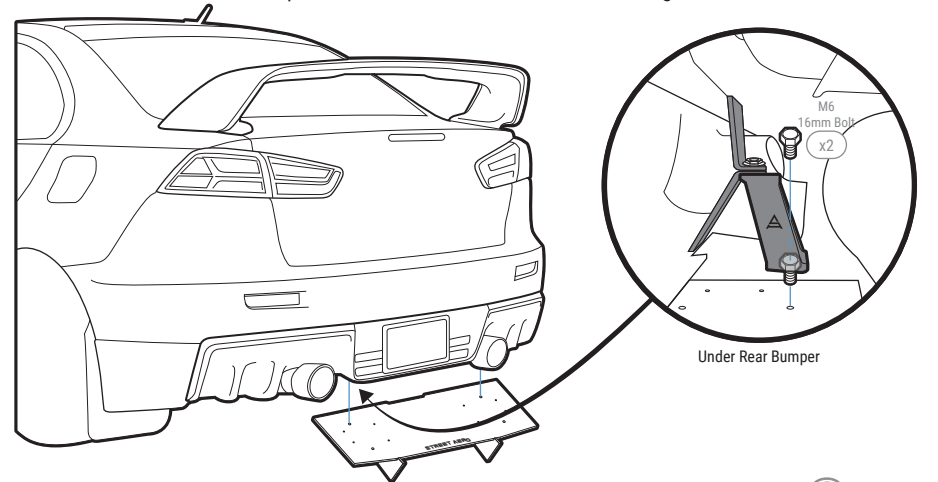
Position both Mounting Bracket MI-2 to the Main Panel shown below

Pre-drill into the bumper by using the hole on Mounting Bracket MI-2

NOTE: Mounting Bracket may need to be removed before drilling

Secure with M6 55mm Bolt, Finishing Washer, Washer, and Nut

NOTE: Reach behind the bumper to secure the Washer and Nut to Mounting Bracket MI-2



STEP: 4 *Mount the Rear Diffuser*

Attach and secure Mounting Bracket MI-3 and MI-4 to the Side Panel with M6 16mm Bolt, Finishing Washer, Nut

Attach the Side Panel to the Main Panel with Small Bolt and Small Nut

NOTE: Do Not tighten Black Bolt on the Side Panel to the Main Panel
(you will need to remove the Side Panel to pre-drill)

Mark where the mounting hole is to the bumper

NOTE: Use the hole on top of MI-3 and MI-4 to mark the drill location

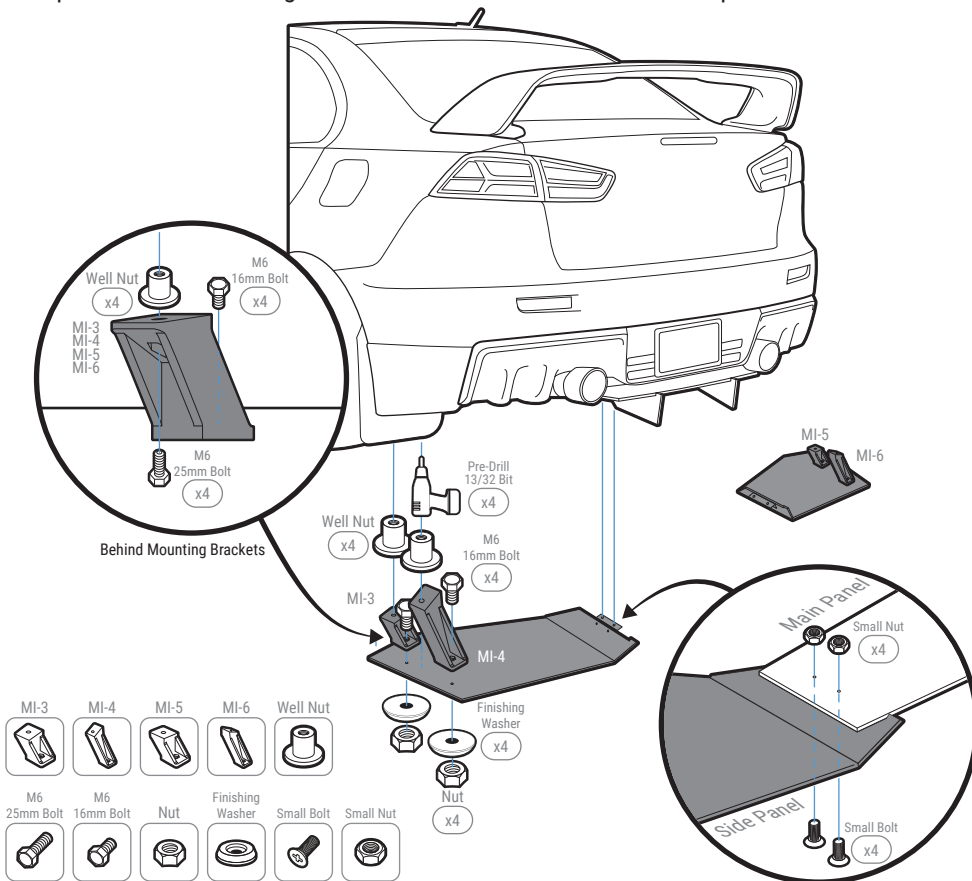
Pre-drill into the bumper

WARNING! Must Use 13/32 bit size to pre-drill

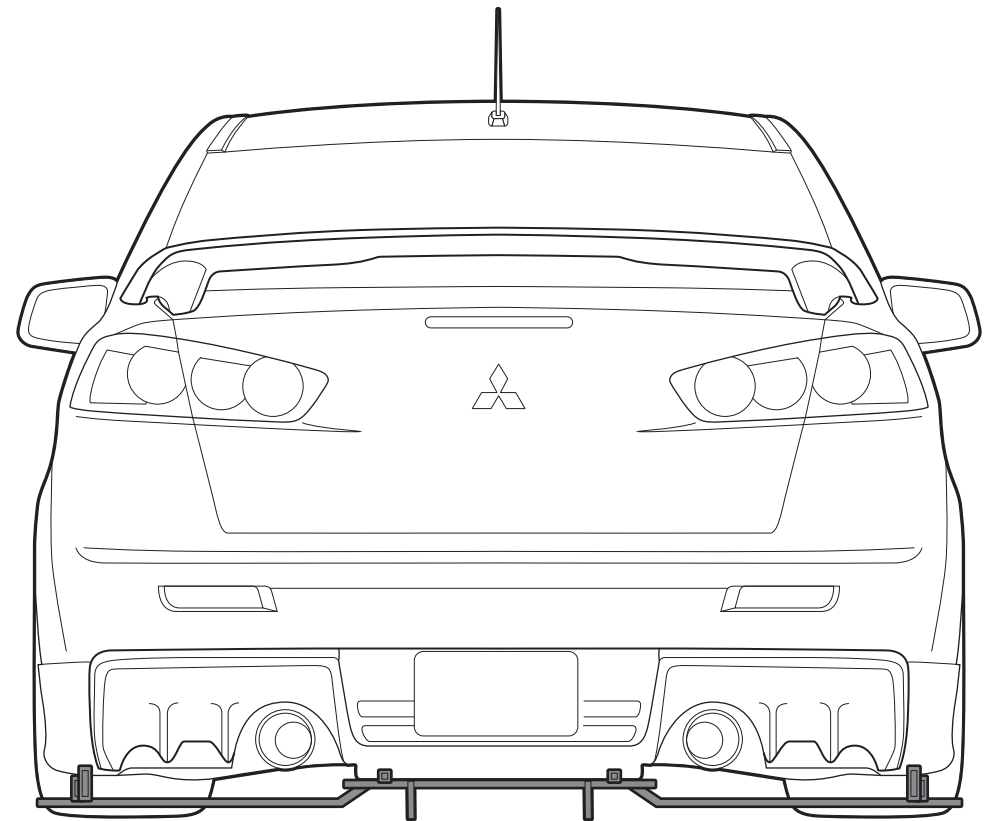
NOTE: Side Panel must be removed before pre-drilling

Install the Side Panel to the Main Panel and bumper by securing Mounting Brackets MI-3 and MI-4 with provided M6 25mm Bolt and Well Nuts

Repeat to install Passenger Side Panel to the Main Panel and bumper



INSTALLATION GUIDE
2008-2017 Mitsubishi Lancer
EVO GSR
ACM Rear Diffuser



s-rda-mit-01-e1

www.streetaero.com

