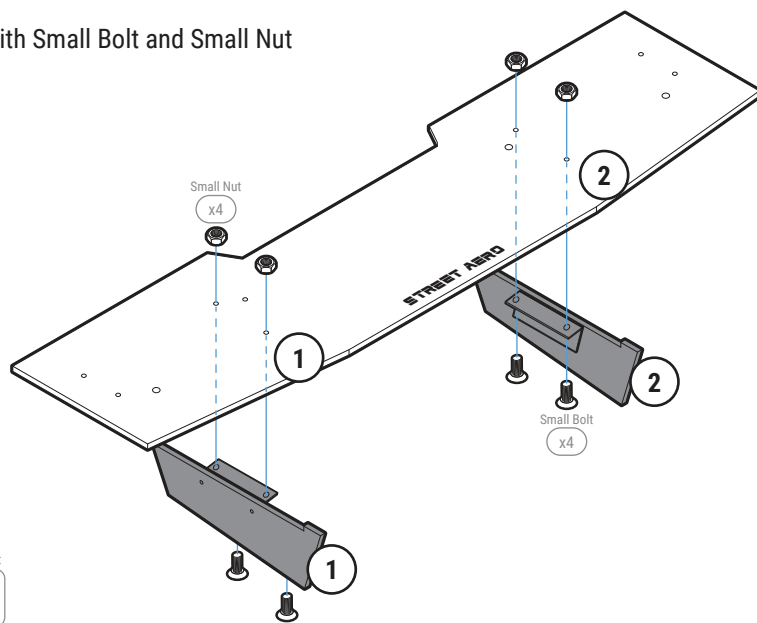


STEP: 1 Assemble Main Panel

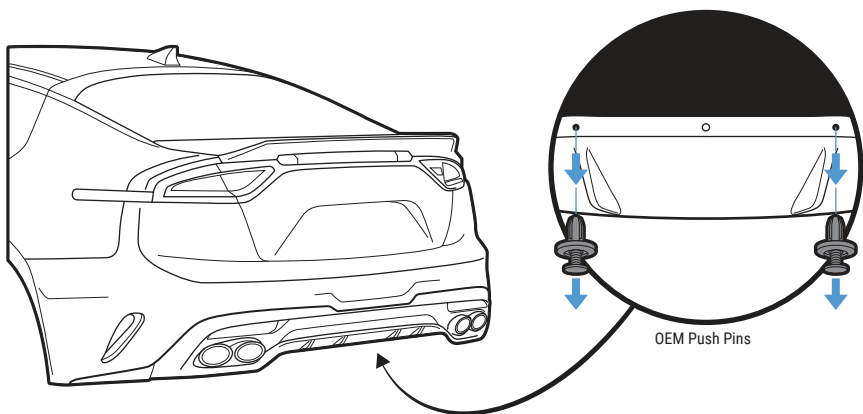
Carefully place Fin 1 and Fin 2 onto the Main Panel
(Match the number on the Fin to the number on the Main Panel)

Secure with Small Bolt and Small Nut



STEP: 2 Remove OEM Push Pins

Remove the 2 Push Pins located under the center of the bumper



STEP: 3 Mount Main Panel

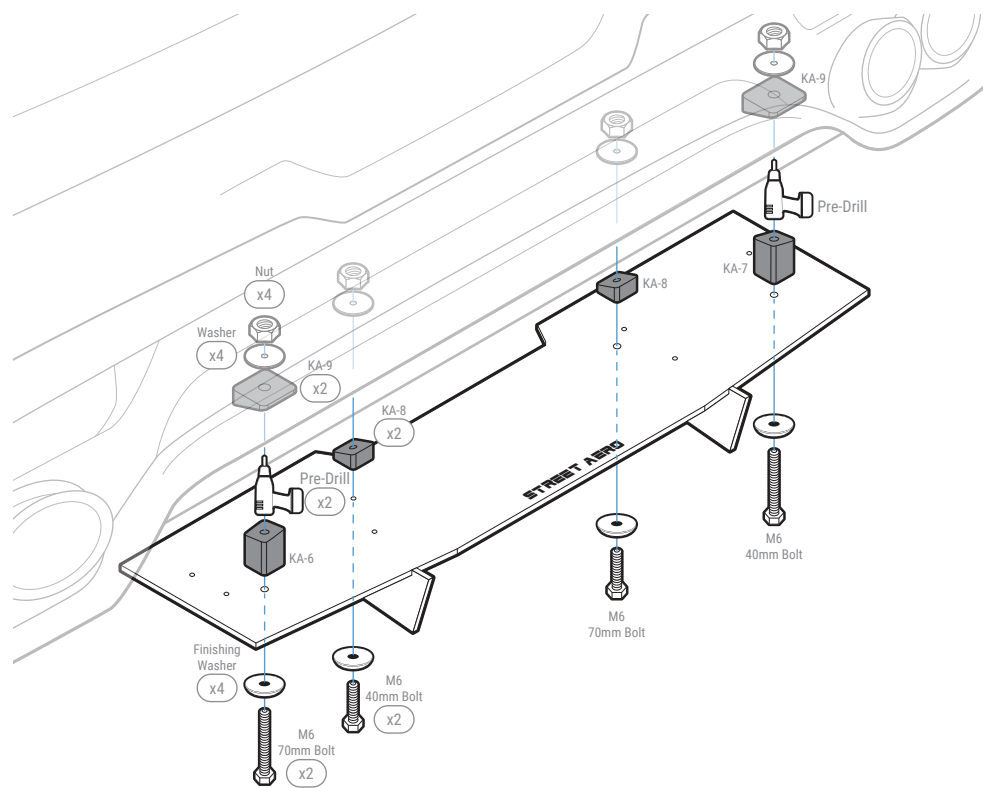
Mount the assembled Main Panel to the bumper by securing Mounting Bracket KA-8 to the OEM mounting hole on **STEP: 2** with M6 40mm Bolt, Finishing Washer, Washer, and Nut
NOTE: Reach under to place Washer and Nut inside the bumper

Align Mounting Bracket KA-6 and KA-7 to its correct mounting location then Mark and Pre-Drill into the bumper

NOTE: Use the hole on top of KA-6 and KA-7 to mark the drill location
NOTE: Mounting Bracket may need to be removed before pre-drilling

Secure Mounting Bracket KA-6 and KA-7 to the bumper with provided M6 70mm Bolt, Finishing Washer, Mounting Bracket KA-9, Washer, and Nut

NOTE: Reach under the bumper to place Mounting Bracket KA-9, Washer and Nut inside the bumper
NOTE: Position Mounting Bracket KA-9 so the Washer and Nut sit leveled and flushed inside the bumper



IMPORTANT: DO NOT over tighten or use power tools to mount the Mounting Brackets

STEP: 4 *Mount the Rear Diffuser*

Remove the 2 Push Pins located under the rear bumper on the Driver and Passenger Side

Attach and secure Mounting Bracket KA-11 and KA-13 to the Side Panel with M6 16mm Bolt, Finishing Washer, and Nut

NOTE: Push the Bolt all the way into the socket to prevent it from falling out

Attach the Side Panel to the Main Panel with Small Bolt and Small Nut

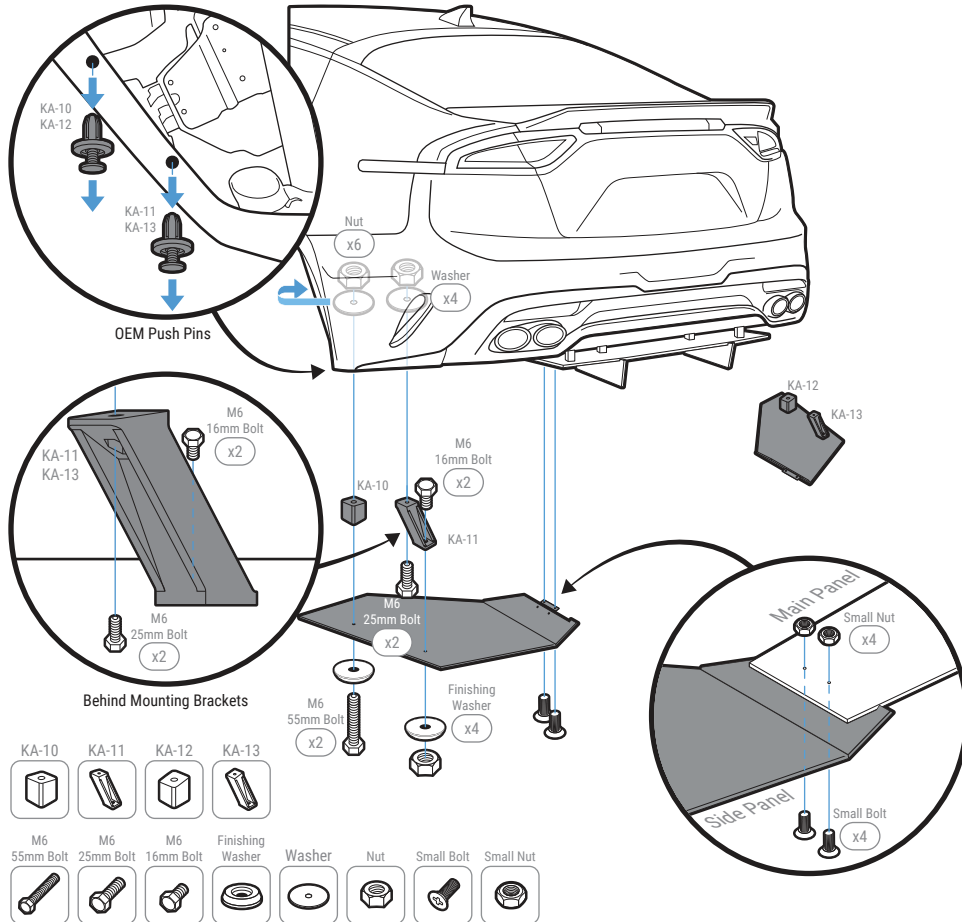
Mount the Side Panel to the bumper by securing Mounting Bracket KA-11 and KA-13 to the OEM hole with M6 25mm Bolt, Washer, and Nut

NOTE: Push the Bolt all the way into the socket to prevent it from falling out

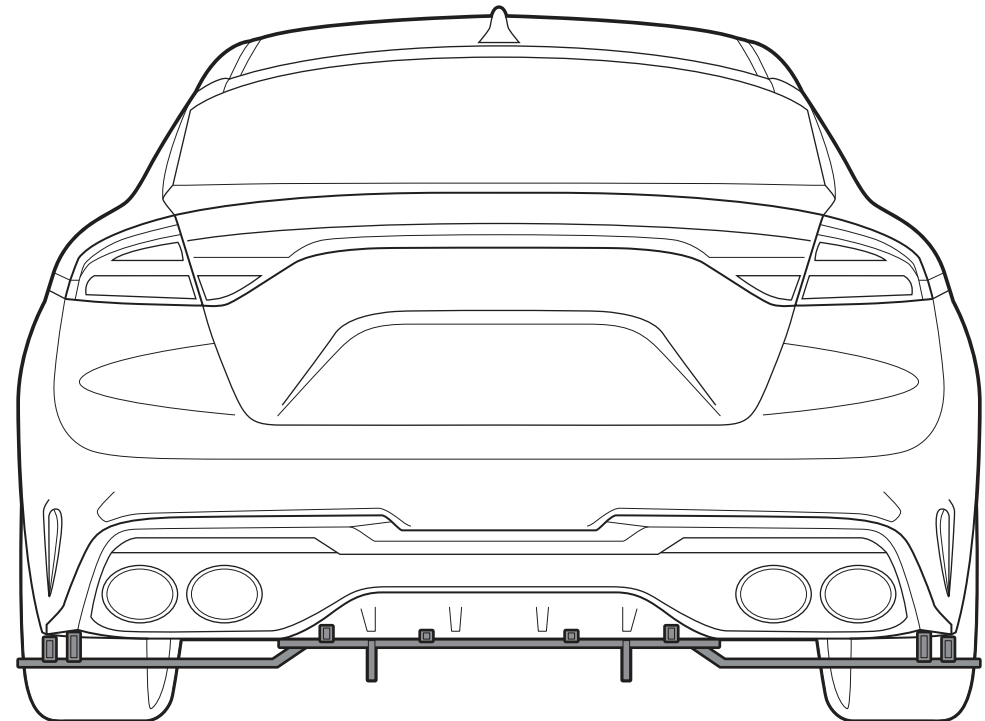
NOTE: Reach under or to the side of the bumper to place the Washer and Nut inside the bumper

Continue mounting the Side Panel by securing Mounting Bracket KA-10 and KA-12 to the OEM hole with M6 55mm Bolt, Washer, and Nut

NOTE: Reach under or to the side of the bumper to place the Washer and Nut inside the bumper



INSTALLATION GUIDE
2018-2023 Kia Stinger GT
ACM Rear Diffuser



s-rda-kia-02-e1

www.streetaero.com

