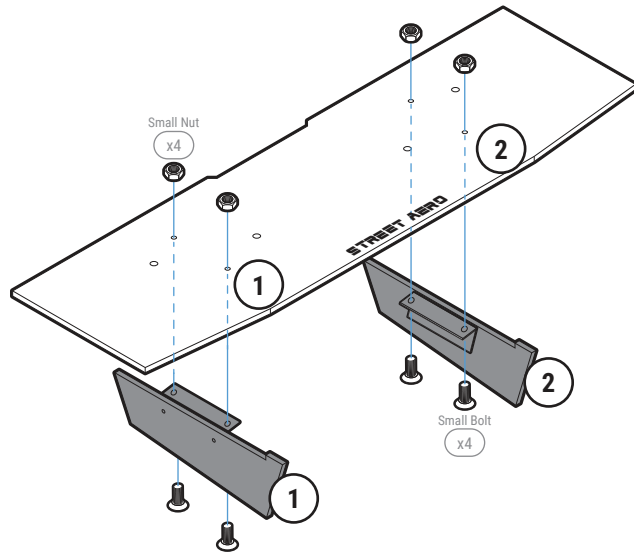


STEP: 1 Assemble Main Panel

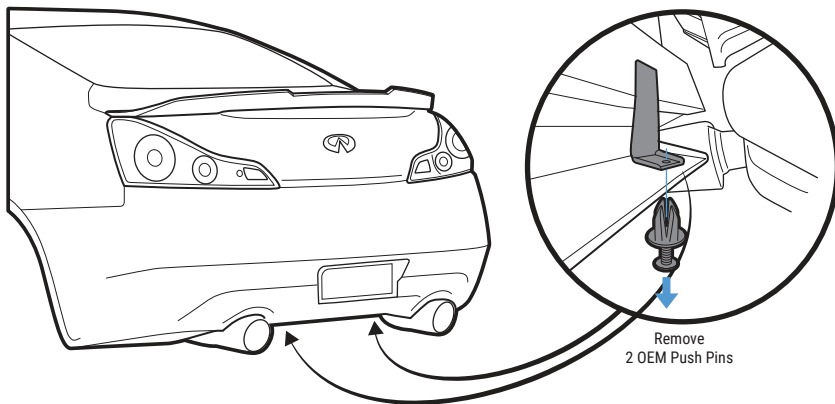
Carefully place Fin 1 and Fin 2 onto the Main Panel
(Match the number on the Fin to the number on the Main Panel)

Secure with Small Bolt and Small Nut



STEP: 2 Remove OEM Push Pins

Remove the 2 Push Pins located under the bumper near the exhaust



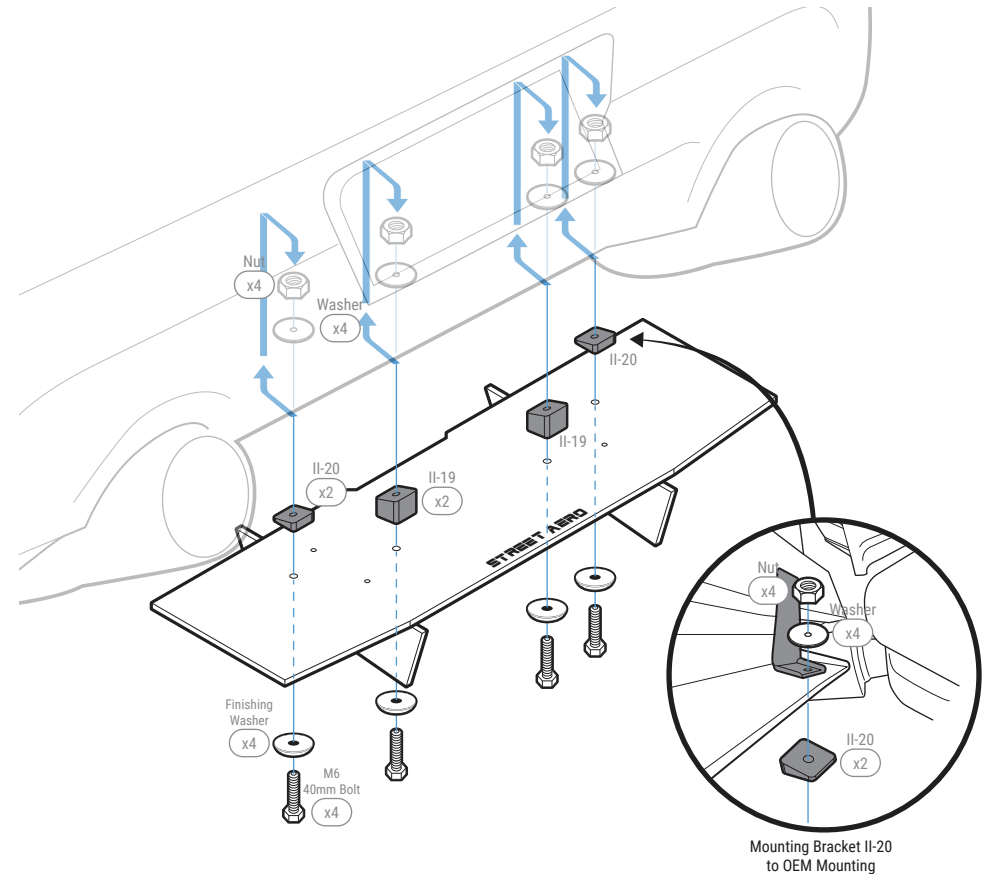
STEP: 3 Install Main Panel

Secure Mounting Bracket II-20 to the OEM holes from **STEP: 2** with M6 40mm Bolt, Finishing Washer, Washer, and Nut

NOTE: Reach under the bumper to place the Washer and Nut inside the bumper on top of the OEM hole from **STEP: 2**

Place Mounting Bracket II-19 to its mounting location and secure it to the Main Panel and bumper with M6 40mm Bolt, Finishing Washer, Washer, and Nut

NOTE: Reach under the bumper to place the Washer and Nut inside the bumper



IMPORTANT: DO NOT over tighten or use power tools to mount the Mounting Brackets

STEP: 4 Mount the Rear Diffuser

Remove the OEM Washer Bolt located under the bumper near the rear wheels

NOTE: We recommend removing the Splash Guard to get access behind the bumper

Attach and secure Mounting Bracket II-25 and II-26 to the Side Panels with M6 16mm Bolt, Finishing Washer, and Nut

NOTE: Push the Bolt all the way into the socket to prevent it from falling out

Align Mounting Bracket II-21 and II-24 to its OEM mounting location

NOTE: Use the M6 40mm Bolt as a guide

Align the Side Panels and rotate Mounting Bracket II-21, II-23, II-25, and II-26 so it sits flushed under the bumper then mark and pre-drill into the bumper where it will be mounted

NOTE: Use the hole on top of II-21, II-23, II-25, and II-26 to mark the drill location

NOTE: Side Panel and Mounting Bracket may need to be removed before drilling

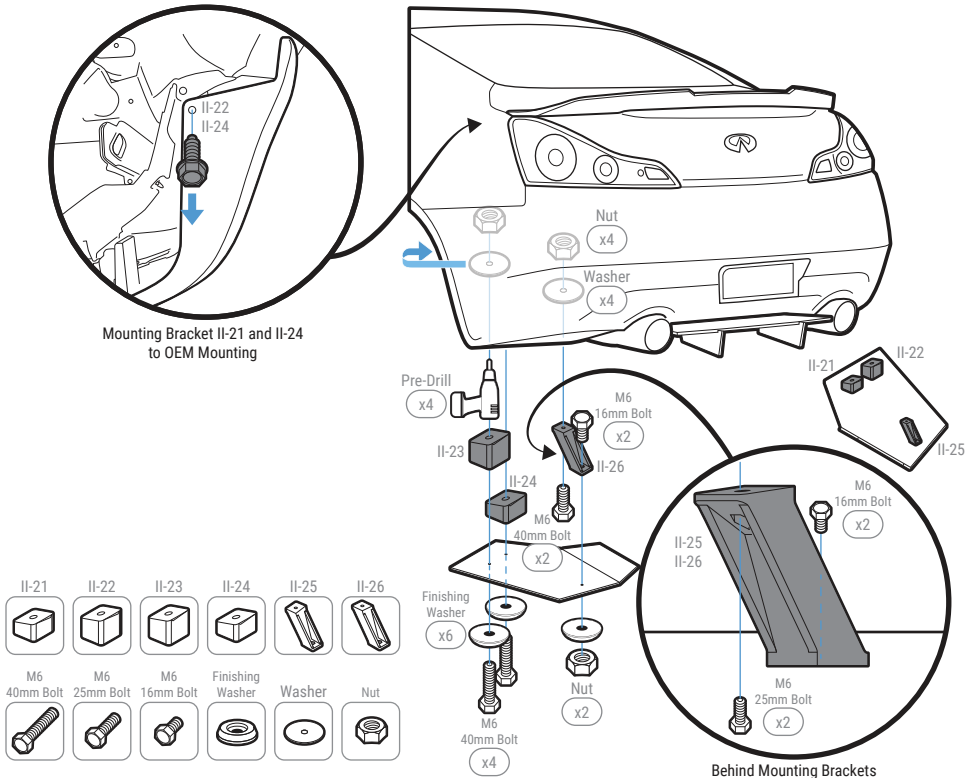
Secure Mounting Bracket II-22 and II-23 to the bumper with M6 40mm Bolt, Finishing Washer, Washer, and Nut

NOTE: Reach under or to the side of the bumper to place the Washer and Nut inside the bumper

Secure Mounting Bracket II-25 and II-26 to the bumper with M6 25mm Bolt, Washer, and Nut

NOTE: Place the M6 25mm Bolt tightly inside the socket behind the Mounting Bracket

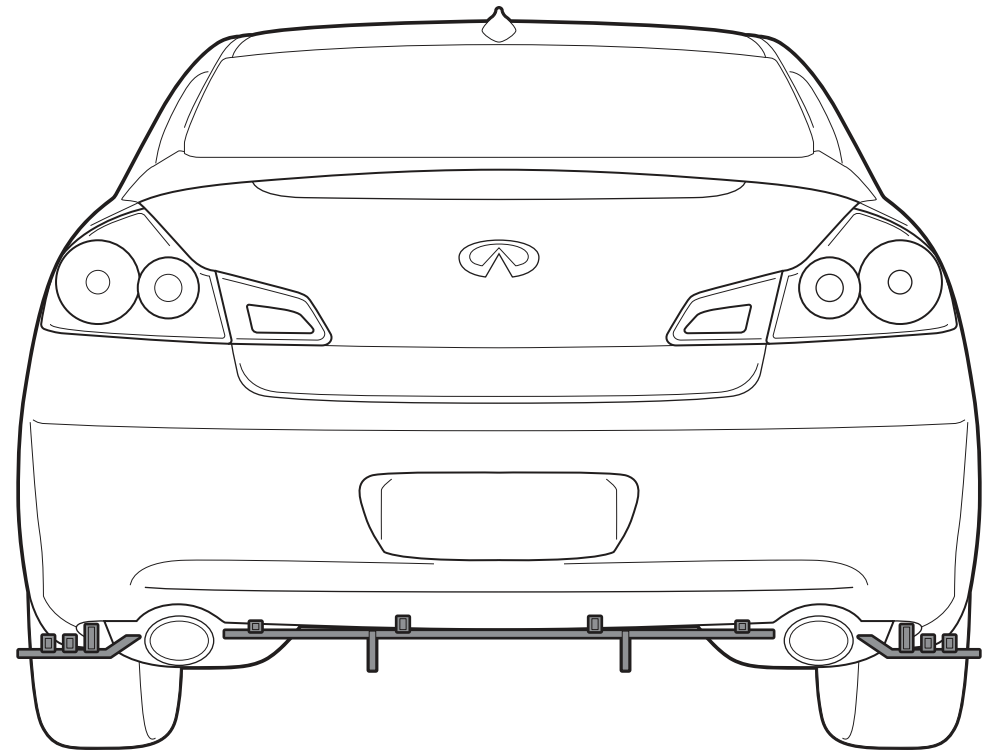
NOTE: Reach under or to the side of the bumper to place the Washer and Nut inside the bumper



INSTALLATION GUIDE

2008-2015 Infiniti G37 Coupe

ACM Rear Diffuser



s-rda-inf-05-e1

www.streetaero.com

info@streetaero.com

