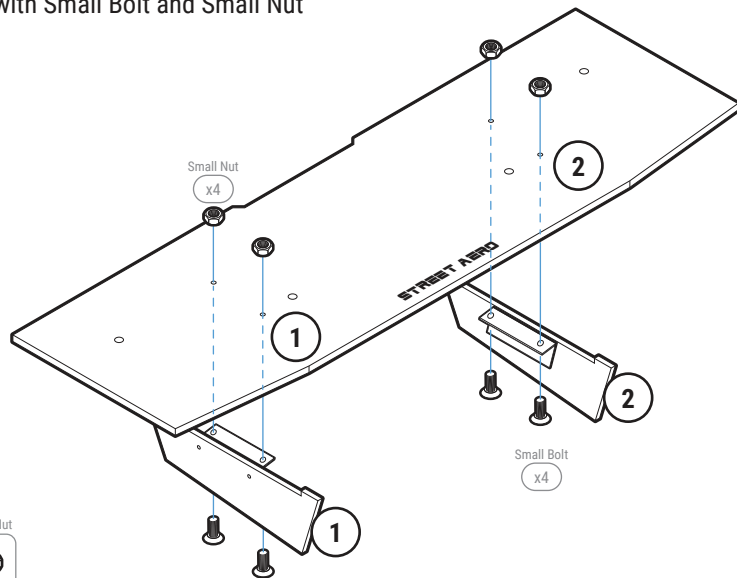


### STEP: 1 Assemble Rear Diffuser

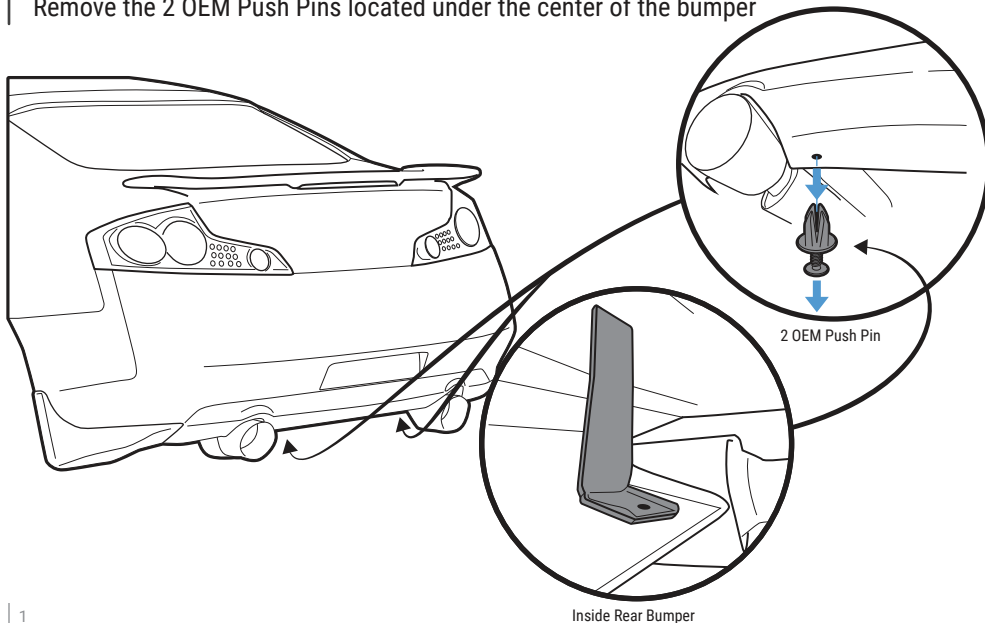
Carefully place Fin 1 and Fin 2 onto the Main Panel  
(Match the number on the Fin to the number on the Main Panel)

Secure with Small Bolt and Small Nut



### STEP: 2 Remove OEM Bolts

Remove the 2 OEM Push Pins located under the center of the bumper



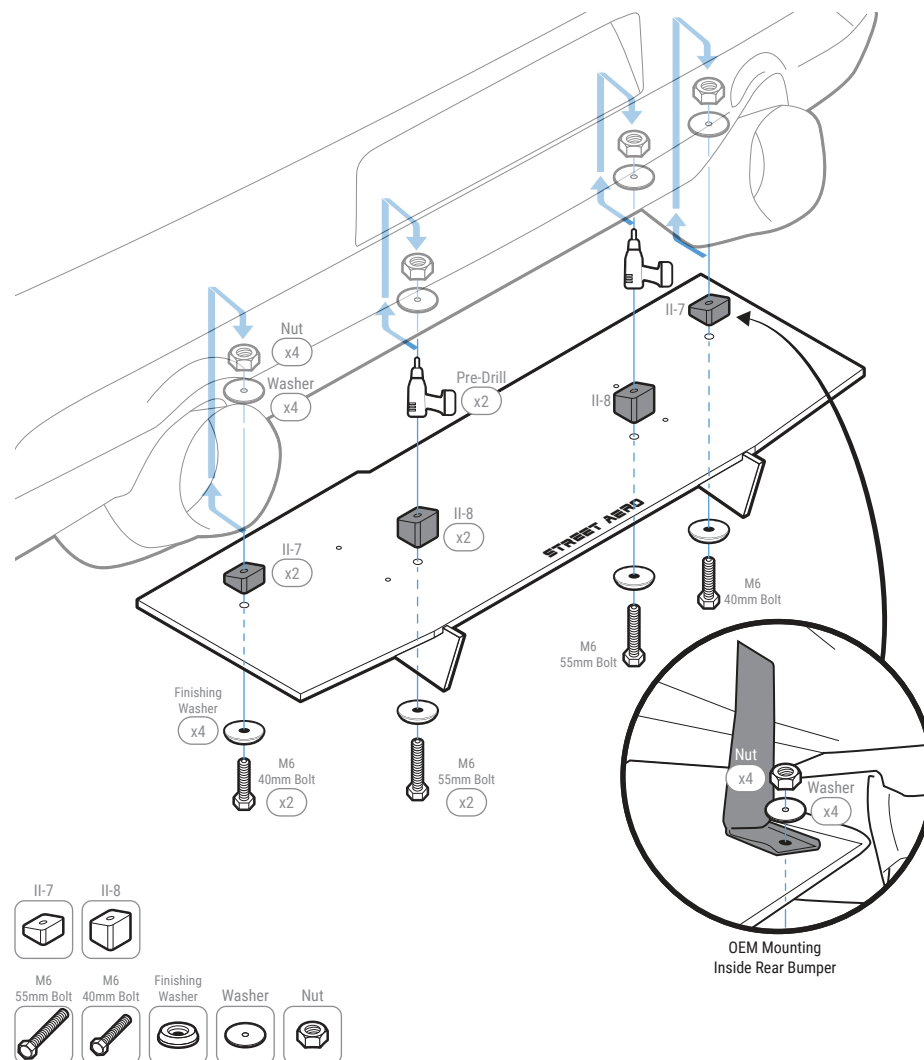
Inside Rear Bumper

### STEP: 3 Install Mounting Bracket

Mount the assembled Main Panel to the bumper by securing Mounting Bracket II-7 to the OEM mounting hole on **STEP: 2** with M6 40mm Bolt, Finishing Washer, Washer, and Nut  
**NOTE:** Reach under to place Washer and Nut inside the bumper

Align Mounting Bracket II-8 to its correct spot then Mark and Pre-Drill into the bumper  
**NOTE:** Use the hole on top of II-8 to mark the drill location  
**NOTE:** Main Panel and Mounting Bracket may need to be removed before pre-drilling

Secure Mounting Bracket II-8 to the bumper with provided M6 55mm Bolt, Finishing Washer, Washer, and Nut  
**NOTE:** Reach under the bumper to place the Washer and Nut inside the bumper



**!** IMPORTANT: DO NOT over tighten or use power tools to mount the Mounting Brackets

**STEP: 4** *Mount the Rear Diffuser*

Attach and secure Mounting Bracket II-9 and II-10 to the Side Panel with M6 16mm Bolt, Finishing Washer, and Nut

**NOTE:** Push the nut all the way into the socket to prevent it from falling out

Align the Side Panel to the bumper

Mark where Mounting Bracket II-9 and II-10 will be mounted to the bumper

**NOTE:** Use the hole on top of II-9 and II-10 to mark the drill location

Mark the last hole on the Side Panel to the bumper

*(This mounting spot does not use Mounting Bracket)*

Pre-drill into the bumper

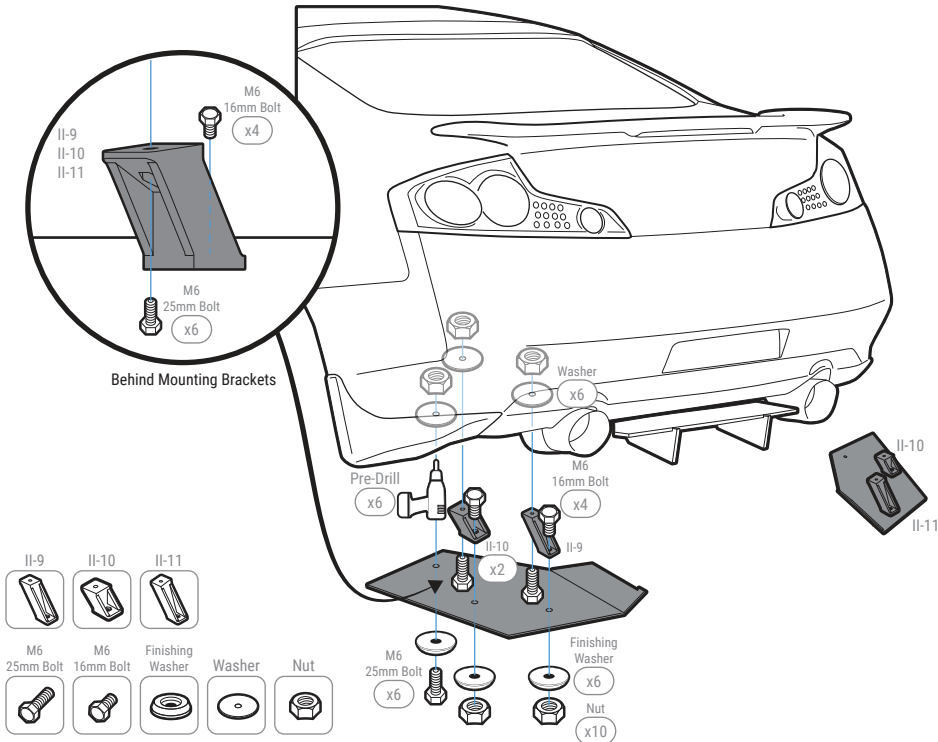
**NOTE:** Side Panel and Mounting Bracket may need to be removed before pre-drilling

Re-attach and mount the Side Panel to the bumper by securing Mounting Bracket II-9 and II-10 with provided M6 25mm Bolt, Finishing Washer, Washer, and Nut

**NOTE:** Reach under or to the side of the bumper to place the Washer and Nut inside the bumper

Use M6 25mm Bolt, Finishing Washer, Washer, and Nut for the hole location without Mounting Brackets

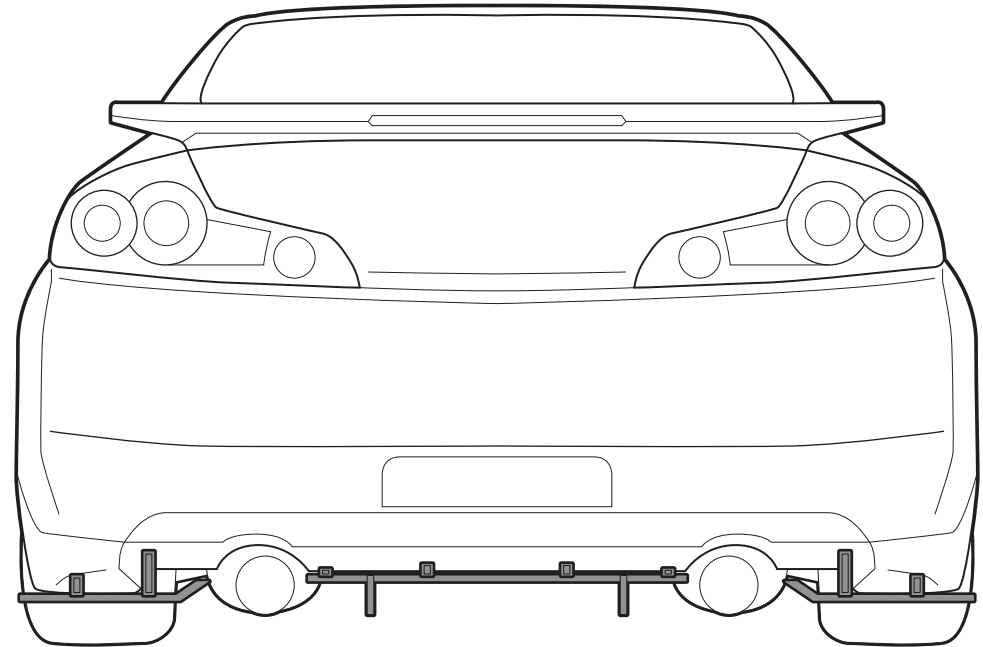
Repeat to install Passenger Side Panel to the bumper



# INSTALLATION GUIDE

## 2003-2007 Infiniti G35 Coupe

### ACM Rear Diffuser



s-rda-inf-04-e1

www.streetaero.com

info@streetaero.com

