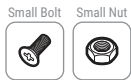
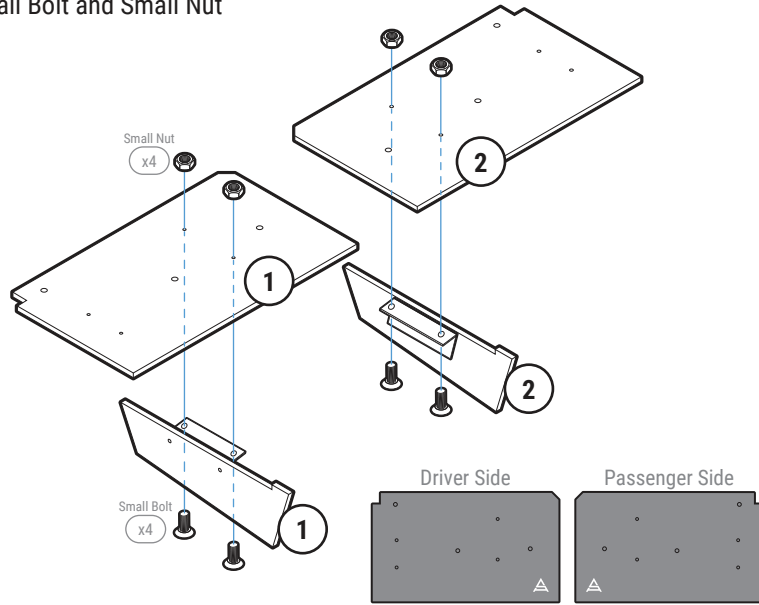


STEP: 1 Assemble Rear Diffuser

Carefully place Fin 1 and Fin 2 onto the Main Panel
(Match the number on the Fin to the number on the Main Panel)

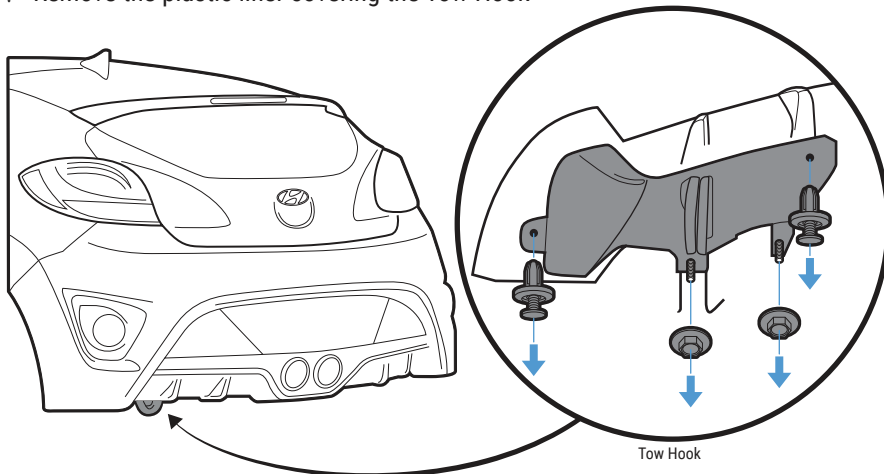
Secure with Small Bolt and Small Nut



STEP: 2 Remove OEM Bolts

Remove the (2) Push Pins and (2) OEM Bolt located under the bumper on the Driver Side

Remove the plastic liner covering the Tow Hook



STEP: 3 Install Mounting Bracket

Mount the assembled Dual Main Panel to the bumper by securing Mounting Bracket HI-7, HI-8, and HI-10 to the OEM mounting hole with M6 40mm Bolt, Finishing Washer, Washer, and Nut

NOTE: Reach under to place Washer and Nut inside the bumper

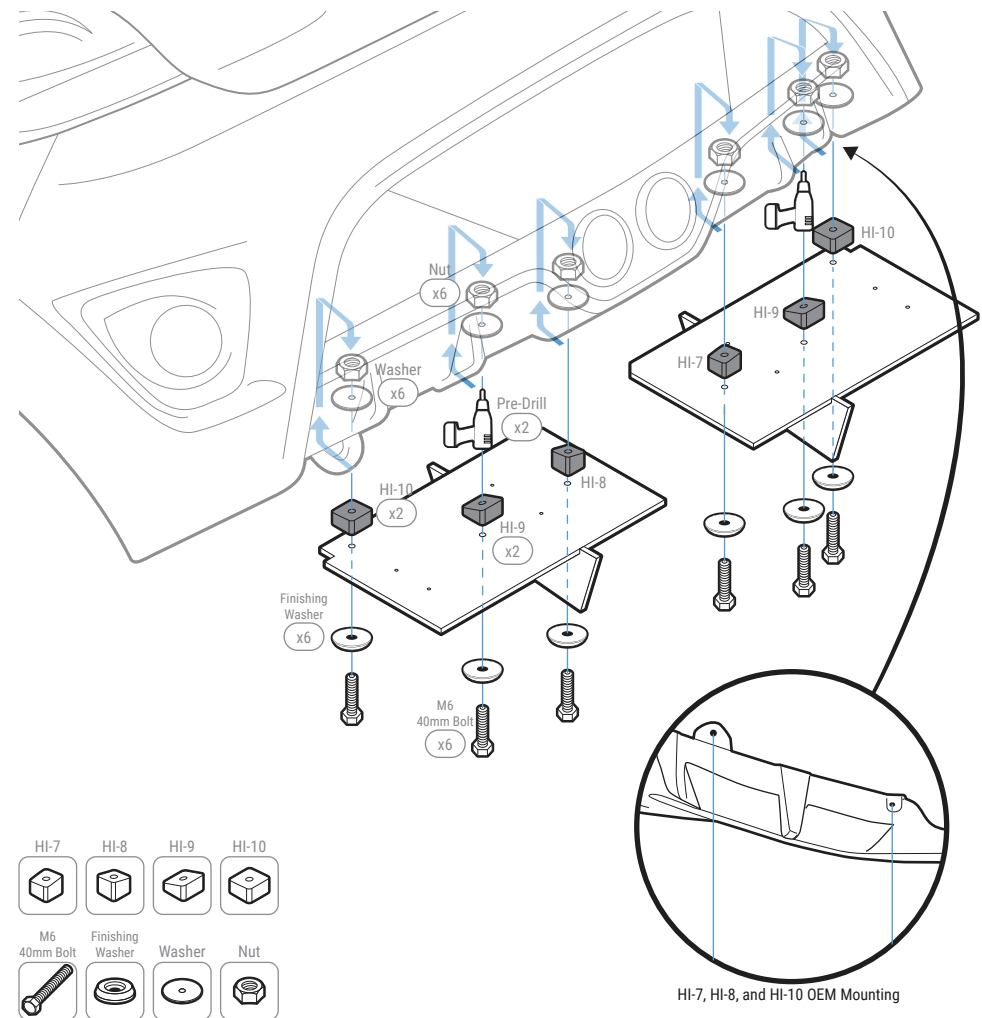
Place Mounting Bracket HI-9 to its correct location and mark and pre-drill where it will be mounted to the bumper

NOTE: Use the hole on top of HI-9 to mark the drill location

NOTE: Mounting Bracket may need to be removed before pre-drilling

Secure Mounting Bracket HI-9 to the bumper with provided M6 40mm Bolt, Finishing Washer, Washer, and Nut

NOTE: Reach under or to the side the bumper to place the Washer and Nut inside the bumper



IMPORTANT: DO NOT over tighten or use power tools to mount the Mounting Brackets

STEP: 4 Mount the Rear Diffuser

Attach and secure Mounting Bracket HI-13 and HI-14 to the Side Panel with M6 16mm Bolt, Finishing Washer, and Nut

NOTE: Push the bolt all the way into the socket to prevent it from falling out

Attach the Side Panel to the Main Panel with Small Bolt and Small Nut

Mark where Mounting Bracket HI-13 will be mounted to the bumper

NOTE: Use the hole on top of HI-13 to mark the drill location

Pre-drill into the bumper

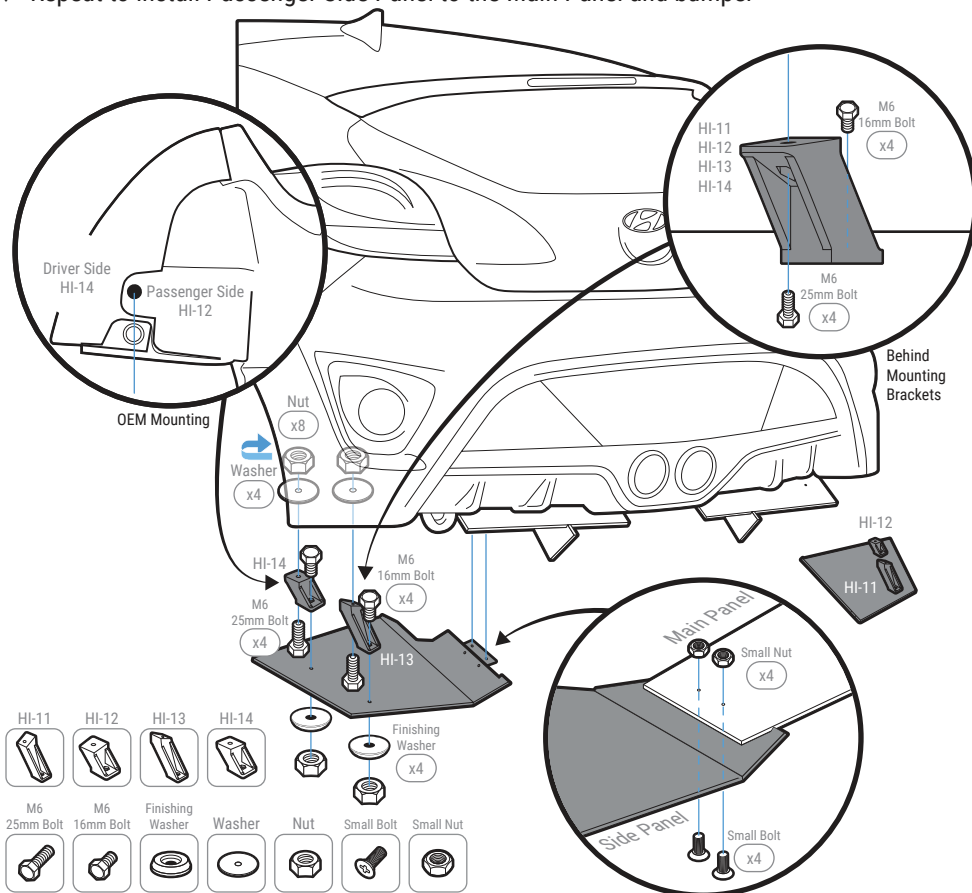
NOTE: Mounting Bracket and Side Panel may need to be removed before pre-drilling

Mount the Side Panel to the bumper by secure Mounting Bracket HI-13 and HI-14 with M6 25mm Bolt, Finishing Washer, Washer, and Nut

NOTE: Use the OEM hole to mount HI-14 and HI-12

NOTE: Reach under or to the side of the bumper to place the Washer and Nut inside the bumper

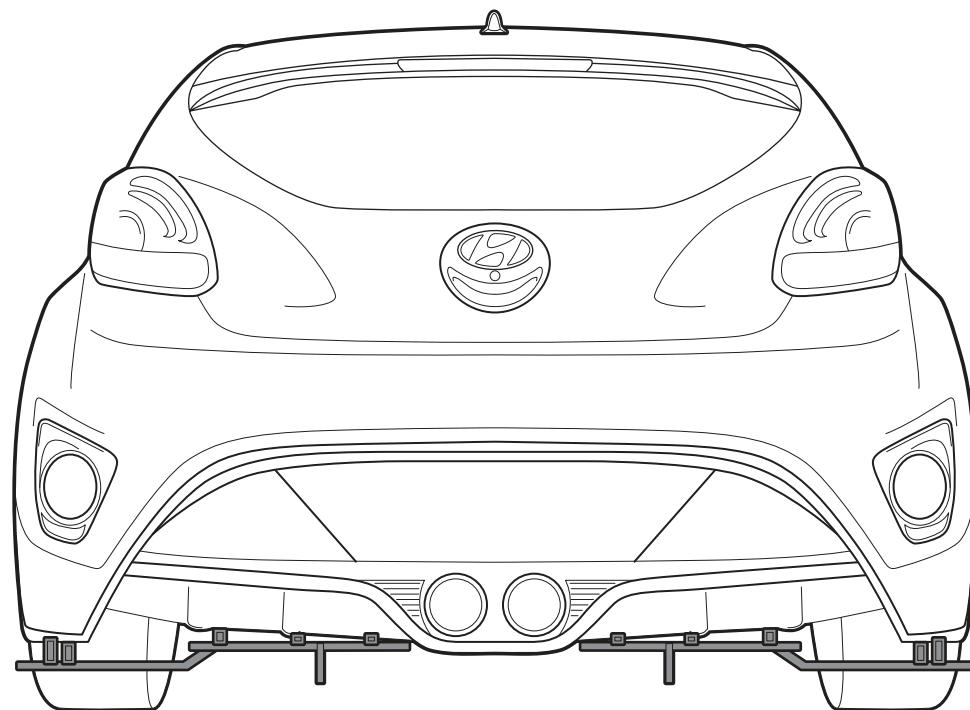
Repeat to install Passenger Side Panel to the Main Panel and bumper



INSTALLATION GUIDE

2012-2017 Hyundai Veloster (Turbo)

ACM Rear Diffuser



s-rda-hyn-02-e1

www.streetaero.com

info@streetaero.com

