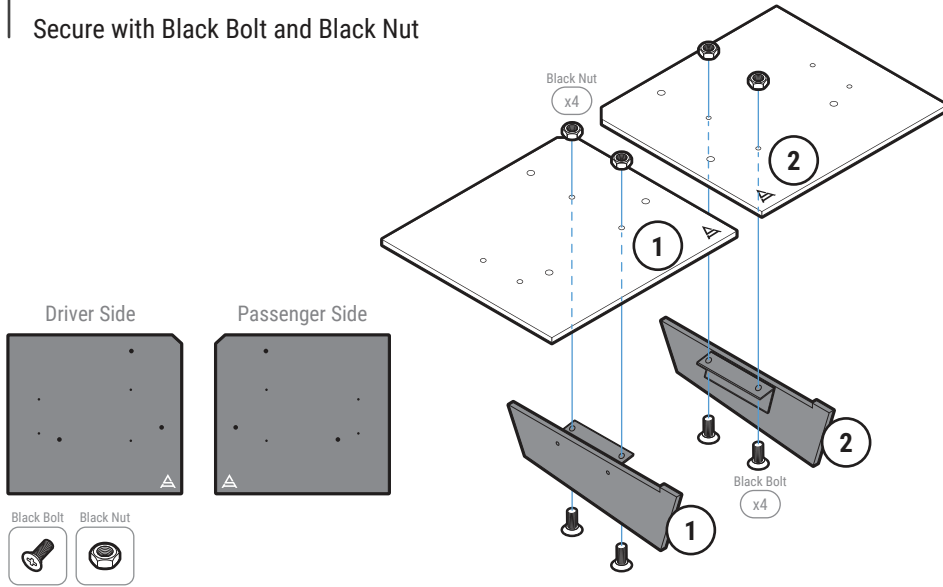


## STEP: 1 Assemble Main Panel

Carefully place Fin 1 onto the Driver Side Dual Main Panel and Fin 2 onto the Passenger Side Dual Main Panel

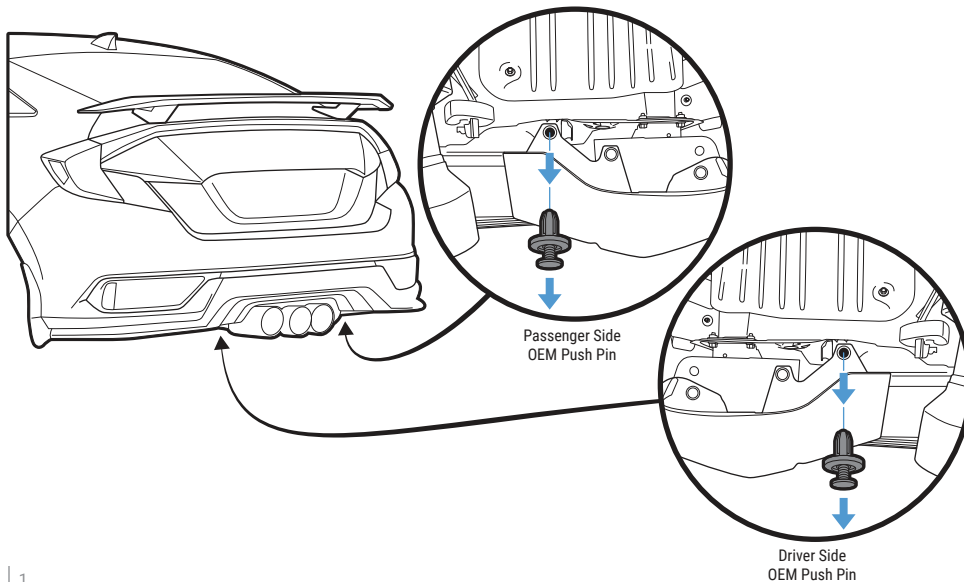
(Match the number on the Fin to the number on the Dual Panel)

Secure with Black Bolt and Black Nut



## STEP: 2 Remove OEM Bolts

Remove the Push Pins located under the center of the bumper



## STEP: 3 Install Mounting Bracket

Use the OEM mounting holes from "STEP: 2" to align and mount the assembled Dual Main Panel to the bumper by securing Mounting Brackets HA-16 with M6 55mm Bolt, Finishing Washer, Washer and Nut

**NOTE:** Reach under or to the side of the bumper to place the Washer and Nut inside the bumper

Align the Dual Main Panel as straight as possible to the bumper

Mark and pre-drill the mounting location with 1/4 Bit for Mounting Bracket HA-15 and HA-18

**NOTE:** Use the hole on top of HA-15 and HA-18 to mark the drill location

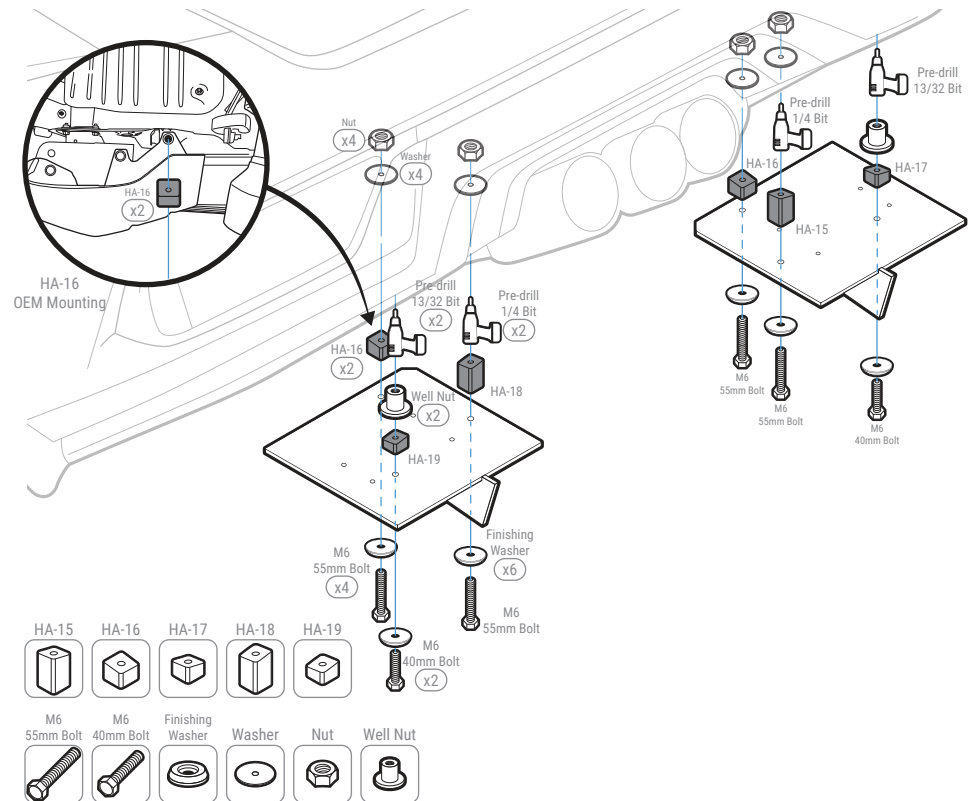
Mark and pre-drill with 13/32 Bit for Mounting Bracket HA-17 and HA-19

Insert Well Nut into the bumper where HA-17 and HA-19 will be mounted

Secure Mounting Bracket HA-15 and HA-18 to the bumper with M6 55mm Bolt, Finishing Washer, Washer and Nut

**NOTE:** Reach under or to the side of the bumper to place the Washer and Nut inside the bumper

Secure Mounting Bracket HA-17 and HA-19 to the bumper and Well Nut with M6 40mm Bolt and Finishing Washer



## STEP: 4 Mount the Rear Diffuser

Attach and secure Mounting Bracket HA-20 and HA-21 to the Side Panel with M6 16mm Bolt, Finishing Washer, and Nut

**NOTE:** Push the Bolt all the way into the socket to prevent it from falling out

Attach the Side Panel to the Main Panel with Black Bolt and Black Nut

Mark where Mounting Bracket HA-20 and HA-21 will be mounted to the bumper

**NOTE:** Use the hole on top of HA-20 and HA-21 to mark the drill location

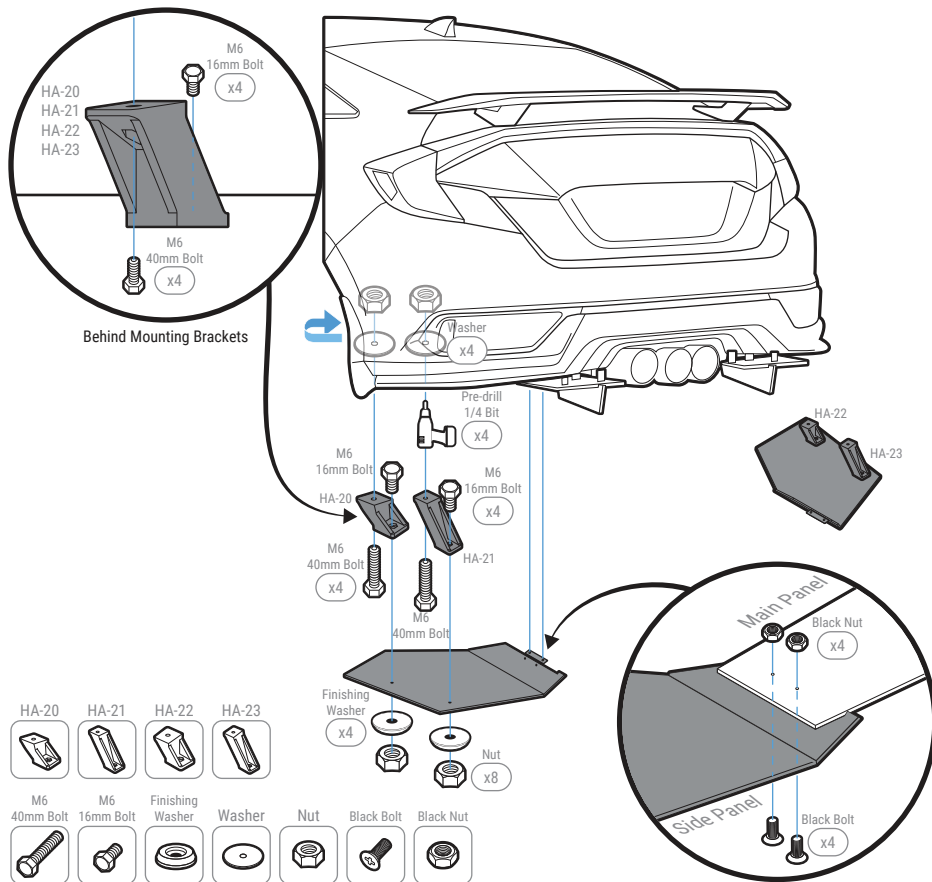
Pre-drill into the bumper with 1/4 Bit

**NOTE:** Mounting Bracket or Side Panel may need to be removed before pre-drilling

Secure Mounting Bracket HA-20 and HA-21 to the bumper with provided M6 40mm Bolt, Finishing Washer, Washer, and Nut

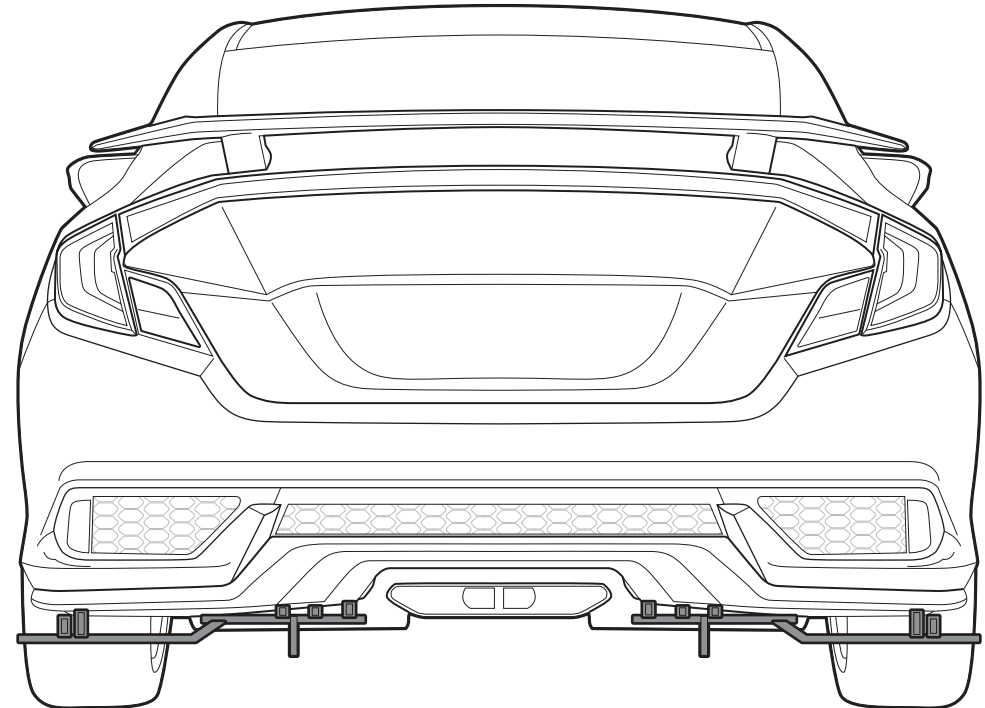
**NOTE:** Reach under or to the side of the bumper to place the Washer and Nut inside the bumper

Repeat to install Passenger Side Panel to the Main Panel and bumper



## INSTALLATION GUIDE

### 2016-2020 Honda Civic SI Coupe ACM Rear Diffuser



s-rda-hon-04-e1

www.streetaero.com

info@streetaero.com