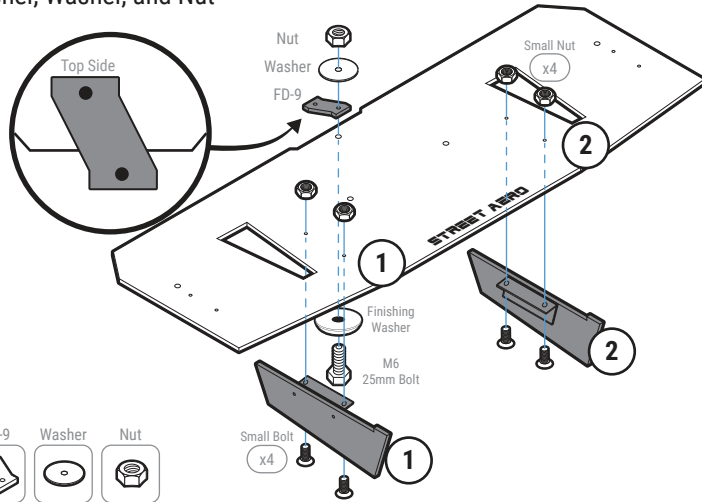


## STEP: 1 Assemble Rear Diffuser

Carefully place Fin 1 and Fin 2 onto the Main Panel  
(Match the number on the Fin to the number on the Main Panel)

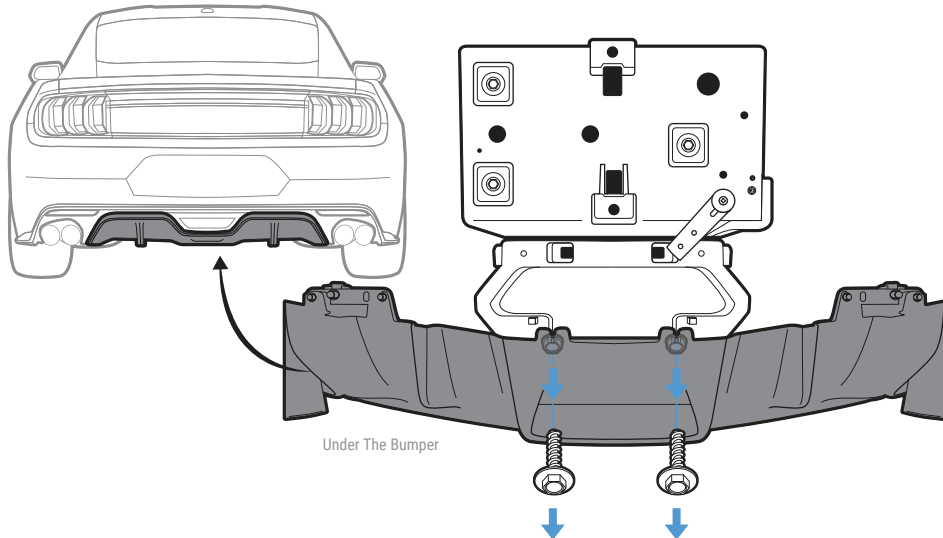
Secure with Small Bolt and Small Nut

Attach and secure Mounting Bracket FD-9 to the Main Panel with provided M6 25mm Bolt, Finishing Washer, Washer, and Nut



## STEP: 2 Remove Push Pins

Remove the two OEM Bolts located under the bumper



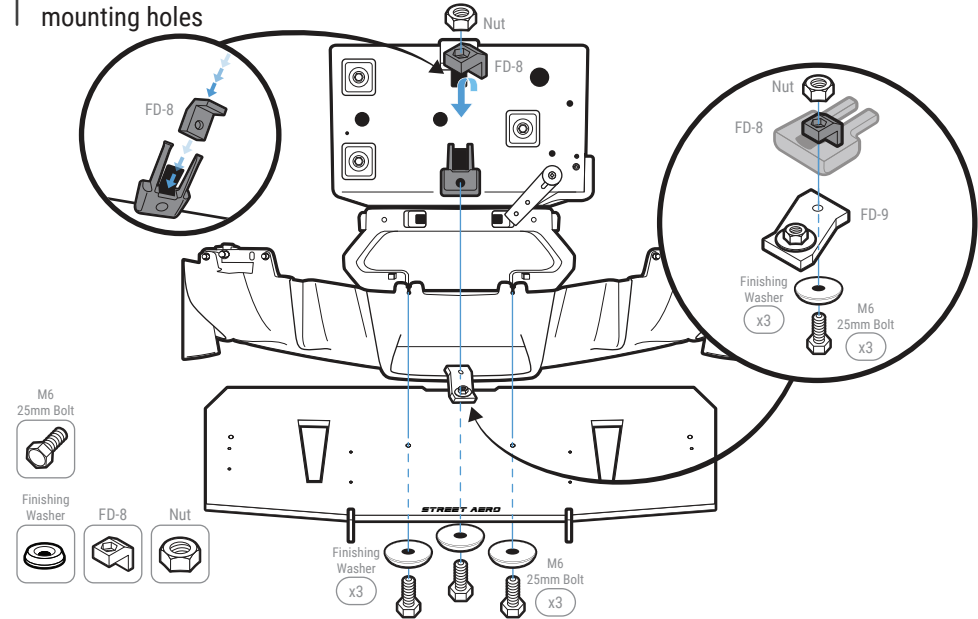
## STEP: 3 Install Mounting Bracket

Place Nut into Nut Assist FD-8

**NOTE:** Push the nut all the way into the socket to prevent it from falling out

Slide Nut Assist FD-8 into designated mounting socket  
(shown in the diagram below)

Mount the Main Panel by securing Mounting Bracket FD-9 to the designated mounting socket with M6 25mm Bolt, Finishing Washer, and Nut. Repeat for **STEP: 2** OEM mounting holes

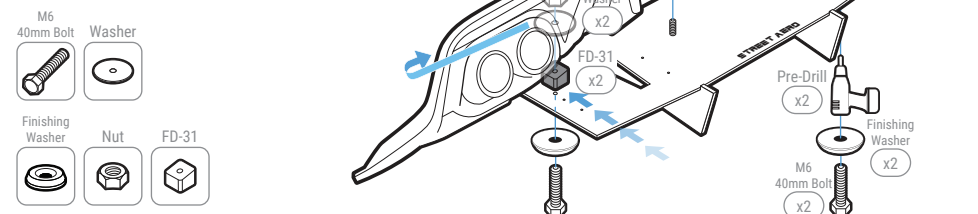


## STEP: 4 Mount Main Panel

Continue mounting the Main Panel to the bumper with two Mounting Bracket FD-31  
**NOTE:** Pre-drill by using the hole on top of FD-31

Secure with Mounting Bracket FD-31 with M6 40mm Bolt, Finishing Washer, Washer, and Nut

**NOTE:** Use the sides near the wheels to place the Washer and Nut inside the bumper



**STEP: 5** *Mount the Rear Diffuser*

Attach and secure Mounting Bracket FD-32 and FD-33 to the Side Panel with M6 16mm Bolt, Finishing Washer, and Nut

**NOTE:** Push the nut all the way into the socket to prevent it from falling out

Attach the Side Panel to the Main Panel with Small Bolt and Small Nut

**NOTE:** Do Not tighten bolts on the Side Panel to the Main Panel  
(you will need to remove the Side Panel to pre-drill)

Mark where the mounting hole is to the bumper

**NOTE:** Use the hole on top of FD-32 and FD-33 to mark the drill location  
(for Passenger Side use FD-34 and FD-35)

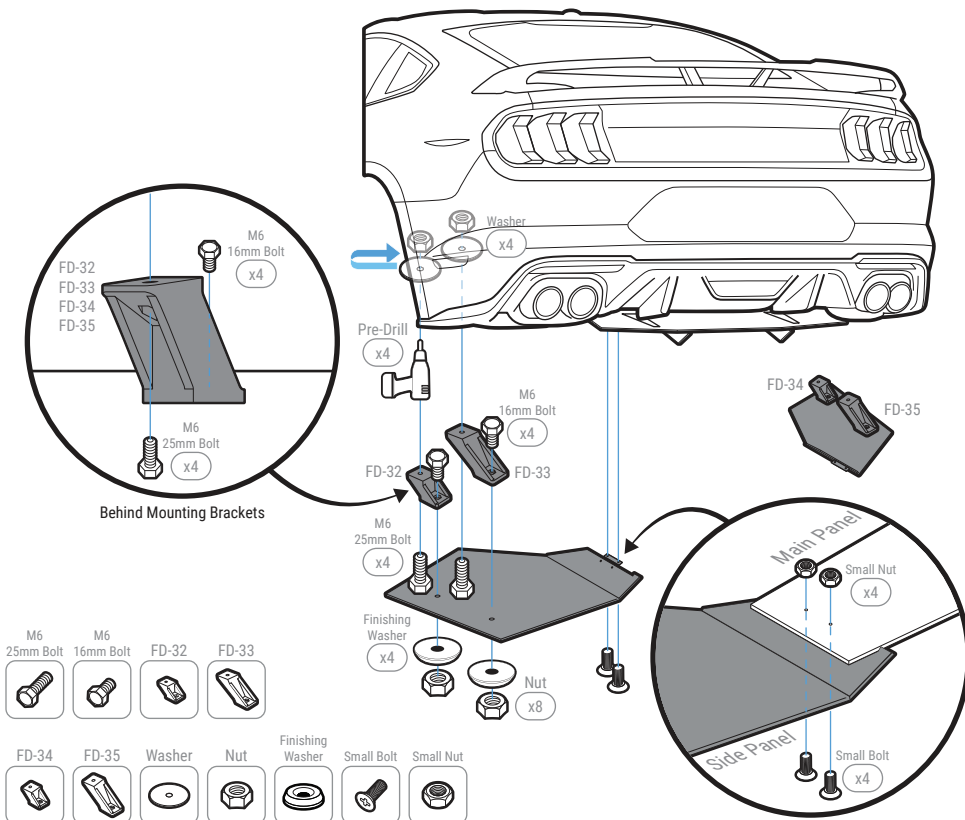
Pre-drill into the bumper

**NOTE:** Side Panel must be removed before pre-drilling

Install the Side Panel to the Main Panel and bumper with Mounting Bracket FD-32, FD-33, M6 25mm Bolt, Washer, and Nut

**NOTE:** Use the sides near the wheels to secure the Washer and Nut inside the bumper

Repeat to install Passenger Side Panel to the Main Panel and bumper

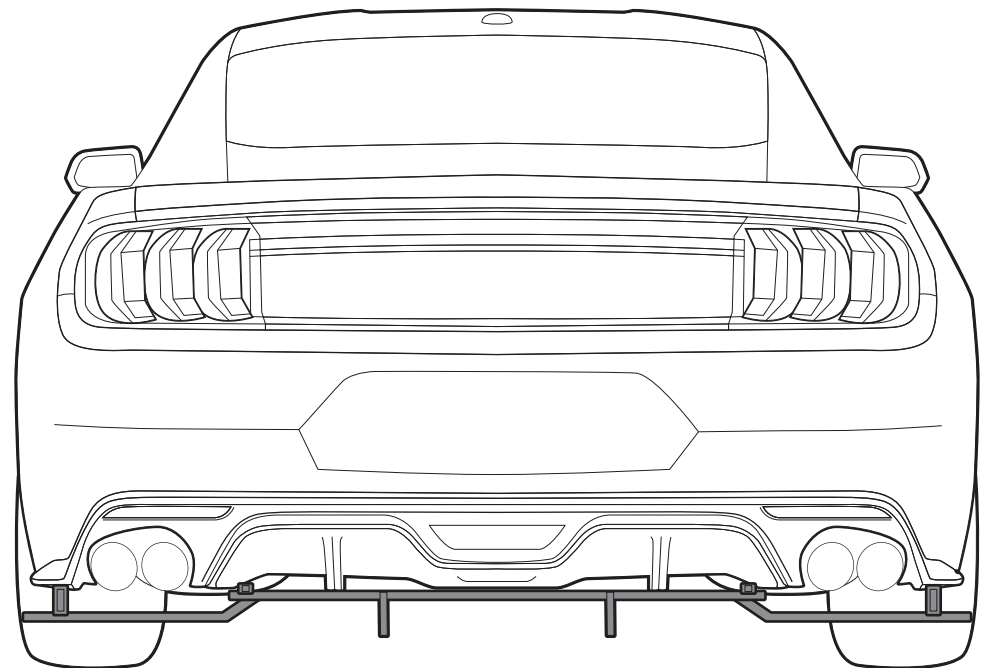


# INSTALLATION GUIDE

## 2018-2023 Ford Mustang

(GT/Performance Package/California Special)

## ACM Rear Diffuser



s-rda-frd-15-e1

s-rda-frd-19-e1

s-rda-frd-20-e1

www.streetaero.com

info@streetaero.com

