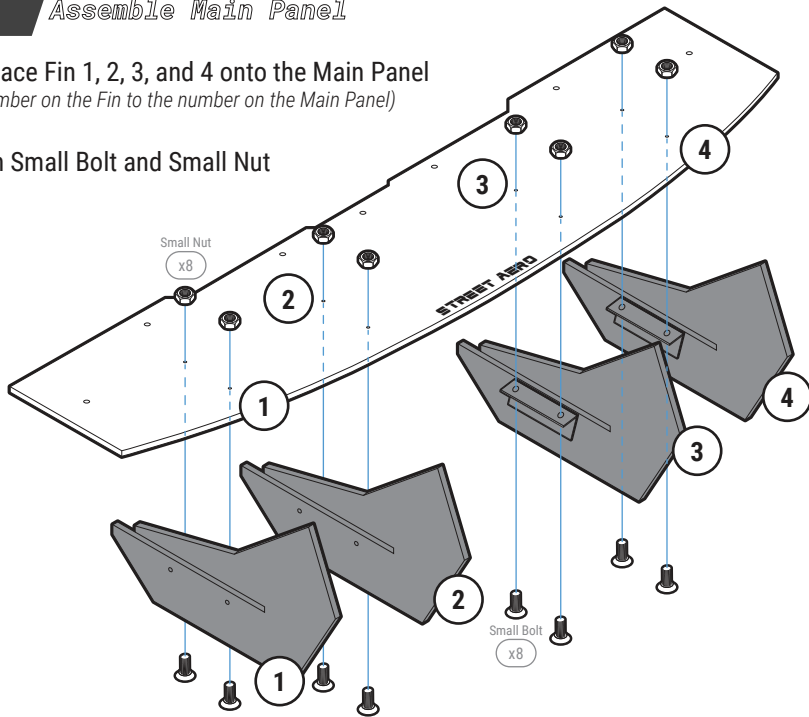


STEP: 1 Assemble Main Panel

Carefully place Fin 1, 2, 3, and 4 onto the Main Panel
(Match the number on the Fin to the number on the Main Panel)

Secure with Small Bolt and Small Nut



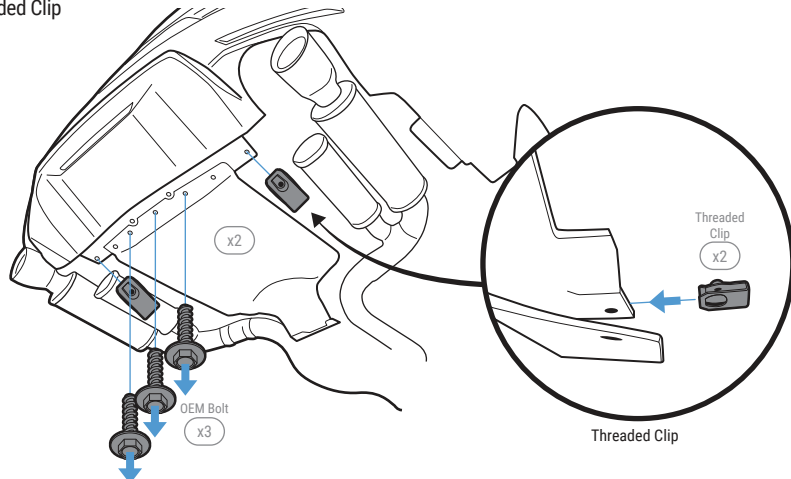
STEP: 2 Remove OEM Push Pins

Remove the 3 OEM Bolts located under the bumper near the center

NOTE: Note where the 3 OEM Washer Bolts are located you will need to re-attach the OEM Bolts to mount the Main Panel

Replace the 2 OEM Threaded Clips with provided Threaded Clips

NOTE: Use Provided M6 25mm Bolt to make sure the Threaded Clip is in the correct spot by test screwing the Bolt into the Threaded Clip



STEP: 3 Install Main Panel

Align and mount the assembled Main Panel to the 3 OEM mounting holes from **STEP: 2** and secure it to the bumper by re-attaching the 3 OEM Bolts

Mark and pre-drill into the bumper where Mounting Bracket FD-73 will be mounted

NOTE: Place Mounting Bracket FD-73 on top of the Main Panel then use the hole on top of the Mounting Bracket to mark and pre-drill through the bumper

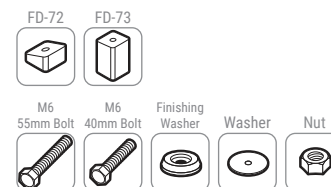
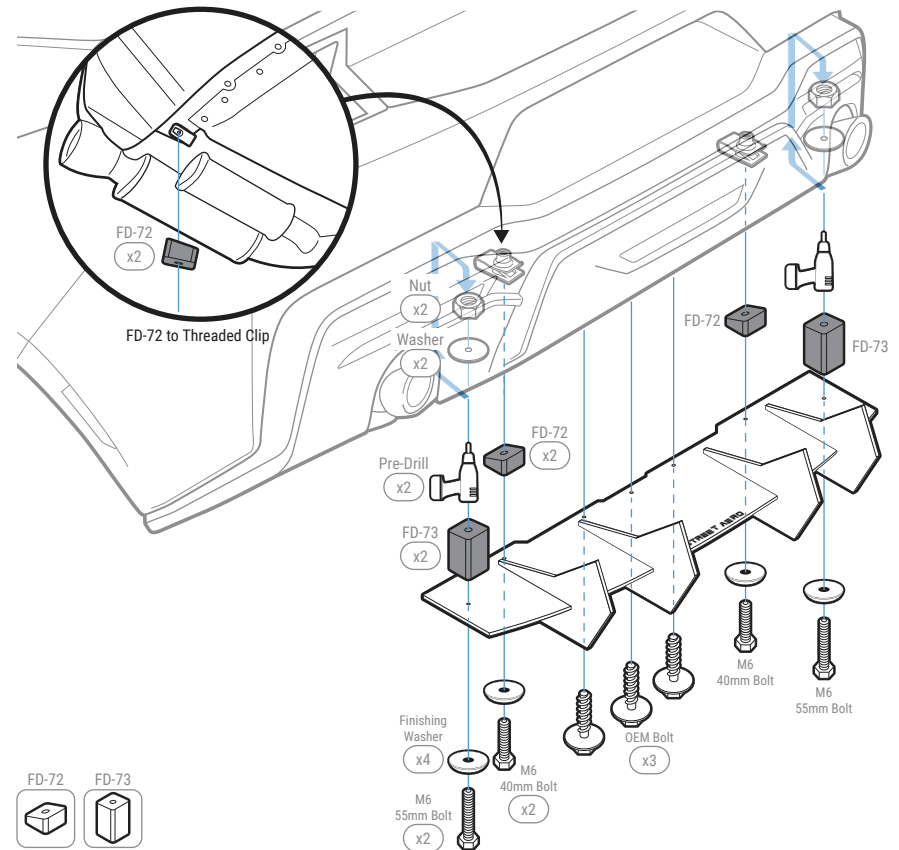
NOTE: Main Panel may need to be removed before pre-drilling

Continue mounting the Main Panel by securing Mounting Bracket FD-72 to the Threaded Clip from **STEP: 2** with M6 40mm Bolt and Finishing Washer

IMPORTANT: Make sure the bolt is fully secured into the threaded Clip

Finish mounting the Main Panel by securing Mounting Bracket FD-73 into the pre-drilled hole and securing it with M6 55mm Bolt, Finishing Washer, Washer, and Nut

NOTE: Reach under the bumper to place the Washer and Nut inside the bumper on top of the hole



IMPORTANT: DO NOT over tighten or use power tools to mount the Mounting Brackets

STEP: 4 *Mount the Rear Diffuser*

Align and secure the Side Fin to the Side Panel with Small Bolt and Small Nut

Remove the Push Pins located under the bumper near the rear wheels

NOTE: We recommend removing the Splash Guard to get access behind the bumper

Align and tape the Drilling Template to the edge of the bumper where the Side Panel will mount to

NOTE: Drilling Template should follow the bumper shape

Pre-drill two holes into the bumper designated on the Drilling Template

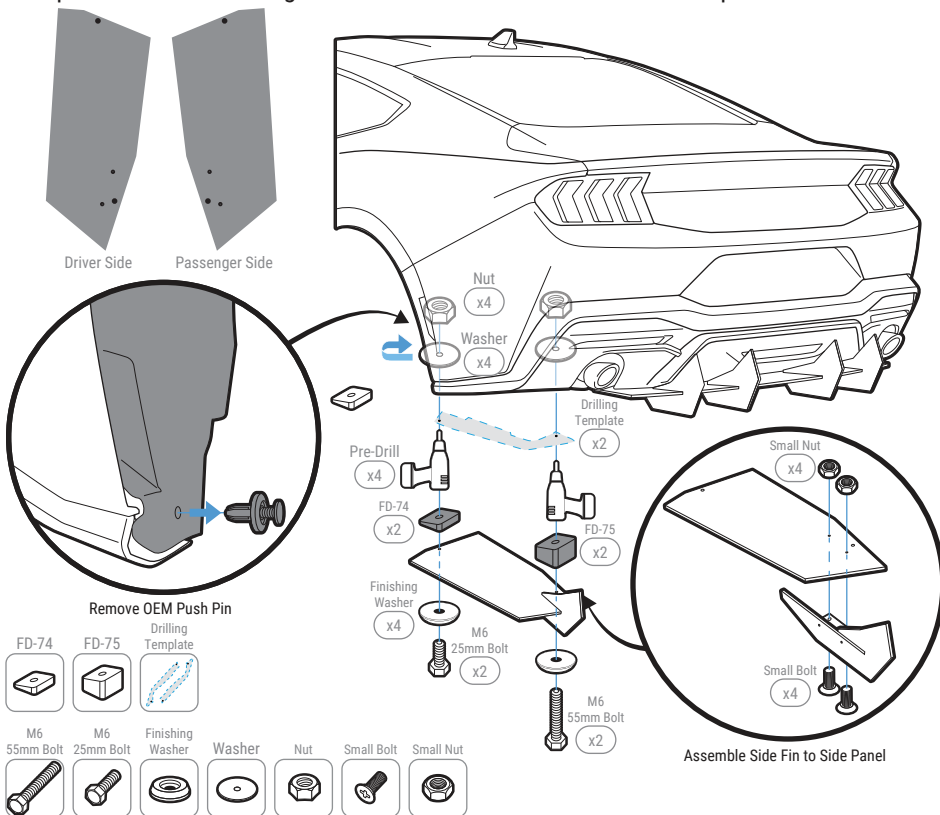
Align and mount the Side Panel to the bumper by securing Mounting Bracket FD-74 with M6 25mm Bolt, Finishing Washer, Washer, and Nut

NOTE: Reach under or to the side of the bumper to place the Washer and Nut inside the bumper

Continue mounting the Side Panel by securing Mounting Bracket FD-75 with M6 55mm Bolt, Finishing Washer, Washer, and Nut

NOTE: Reach under or to the side of the bumper to place the Washer and Nut inside the bumper

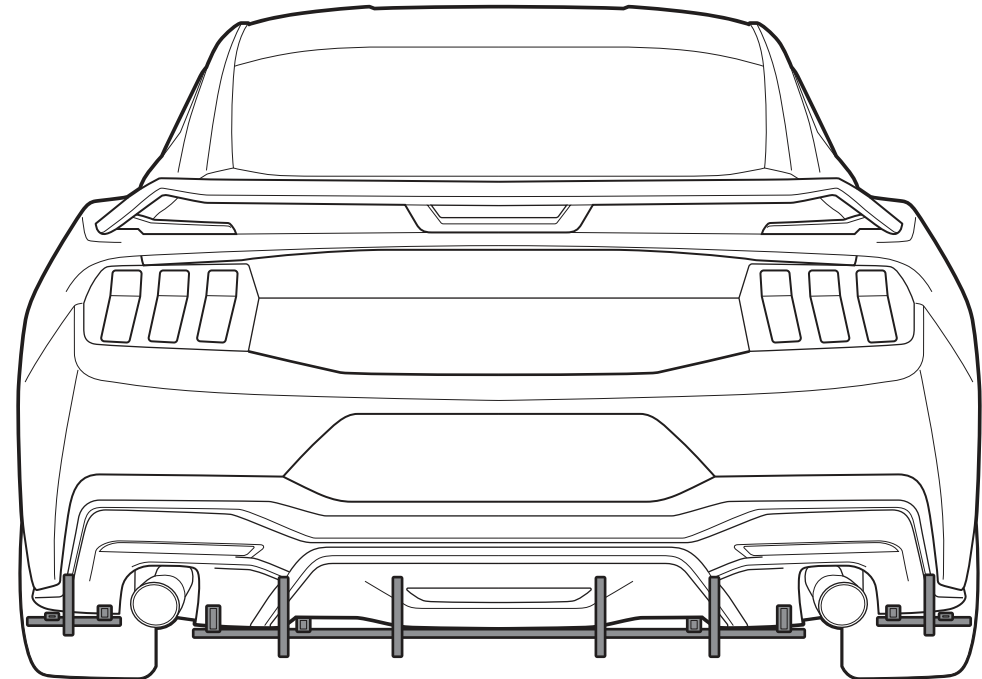
Repeat to install Passenger Side Panel to the Main Panel and bumper



INSTALLATION GUIDE

2024 Ford Mustang Classic Edition

ACM Rear Diffuser



s-rda-frd-21

www.streetaero.com

