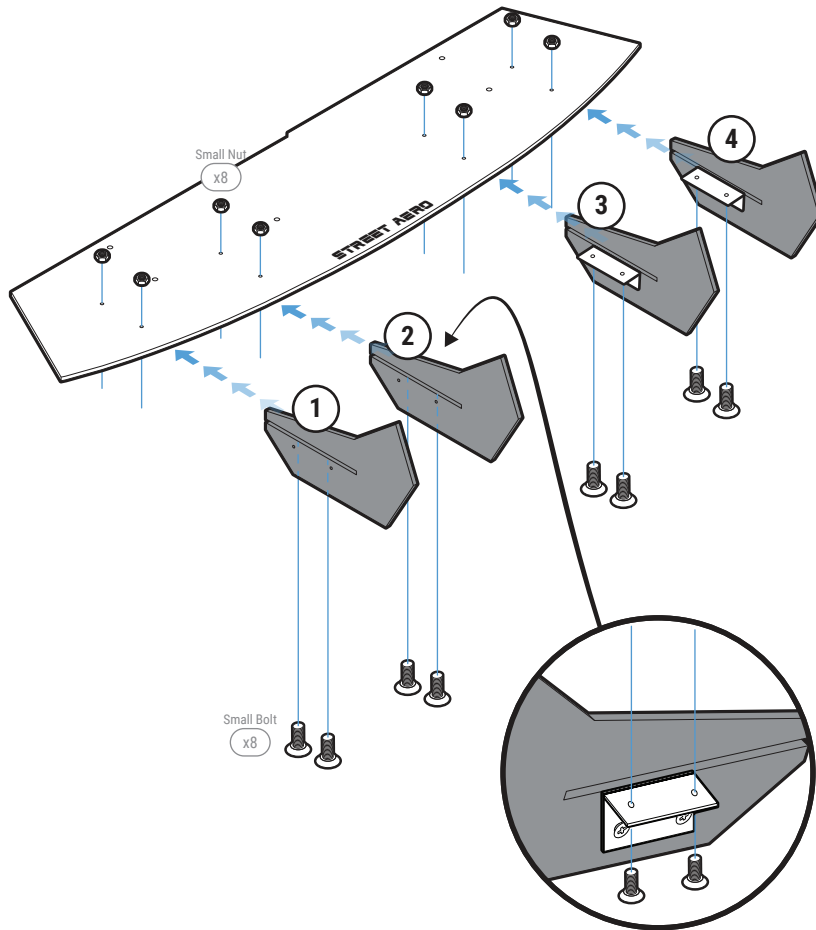


STEP: 1 Assemble Main Panel

Carefully place Fin 1, 2, 3, and 4 onto the Main Panel
(Match the number on the Fin to the number on the Main Panel)

NOTE: To prevent scratches keep the Fin as straight as possible

Secure with Small Bolt and Small Nut



STEP: 2 Mount Main Panel

Align the assembled Main Panel to the bumper

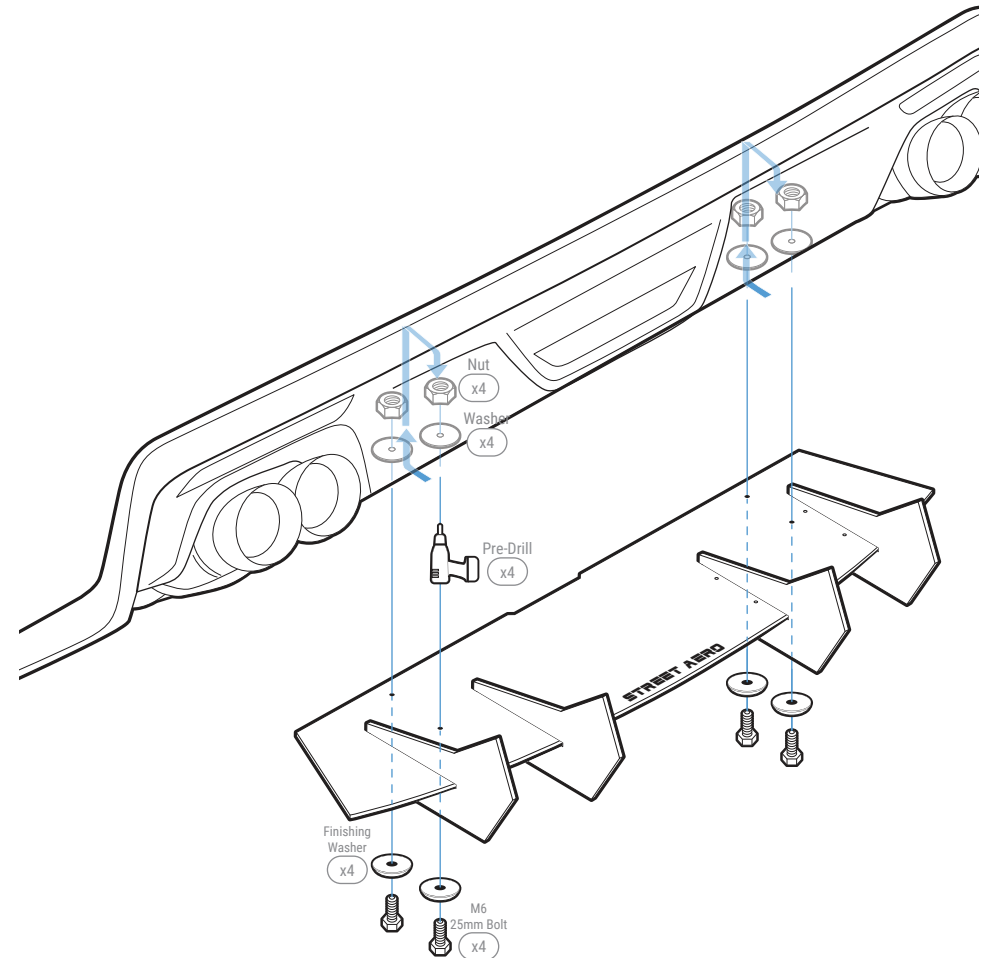
Mark where the Main Panel has the most contact to the bumper

NOTE: Every bumper is slightly different determine where to mount based on your specific bumper style

Pre-drill through the Main Panel and into the bumper

Mount the assembled Main Panel to the bumper by securing M6 25mm Bolt, Finishing Washer, Washer, and Nut to the bumper

NOTE: Remove necessary hardware to access the bumper to place the Washer and Nut inside the bumper



STEP: 3 *Mount Side Panel*

Align the Side Panel to the bumper

Mark where the Side Panel has the most contact to the bumper

NOTE: Every bumper is slightly different determine where to mount based on your specific bumper style

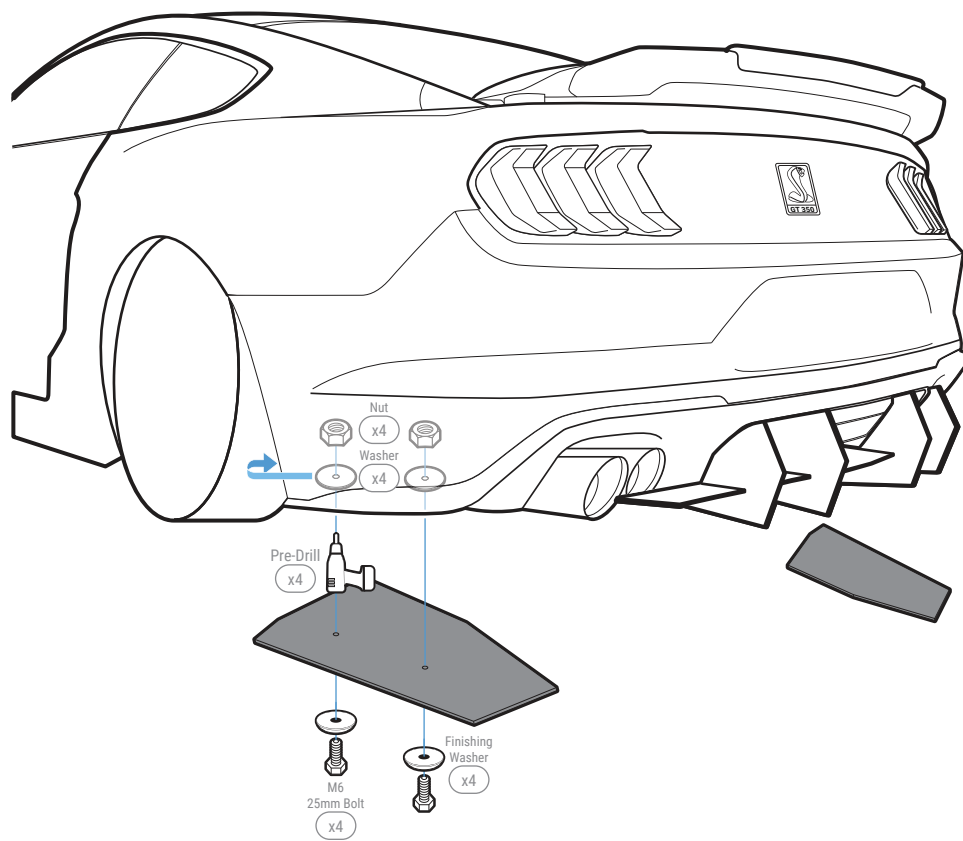
Pre-drill through the Side Panel and into the bumper

Secure the Side Panel to the bumper with provided M6 25mm Bolt, Finishing Washer, Washer, and Nut

NOTE: Reach under the bumper to place the Washer and Nut inside the bumper

NOTE: Bumper hardware may need to be removed to get access inside the bumper

Repeat to mount Passenger Side Panel to the bumper

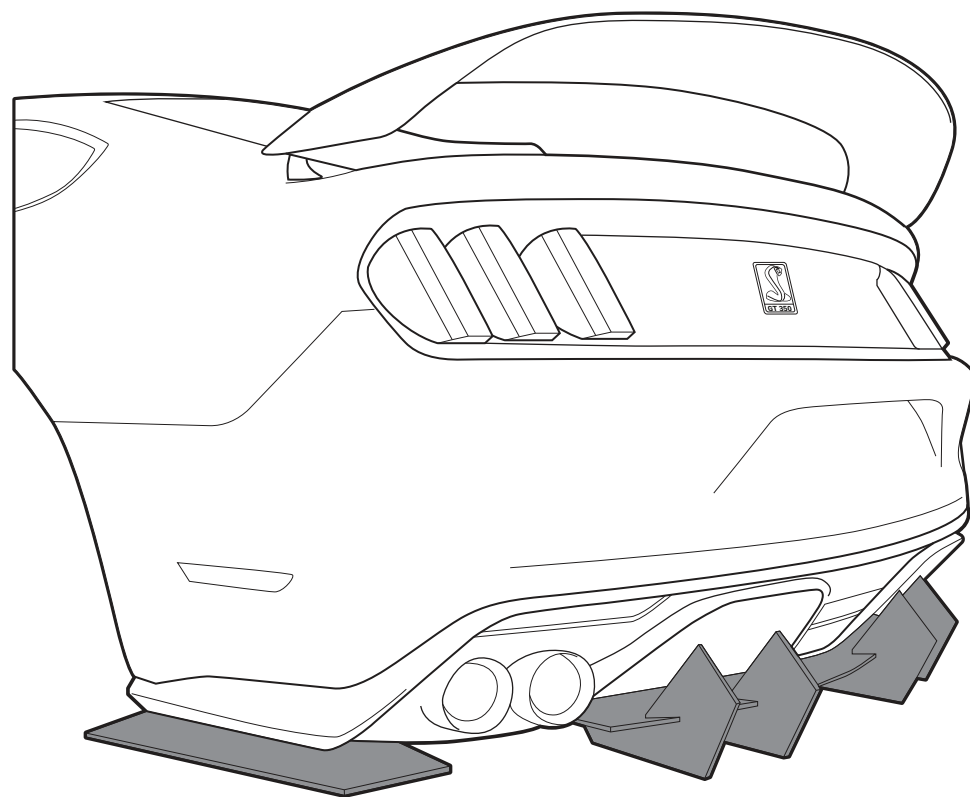


INSTALLATION GUIDE

2015-2020 Ford Mustang Shelby GT350

Classic Edition

ACM Rear Diffuser



s-rda-frd-07

www.streetaero.com

info@streetaero.com