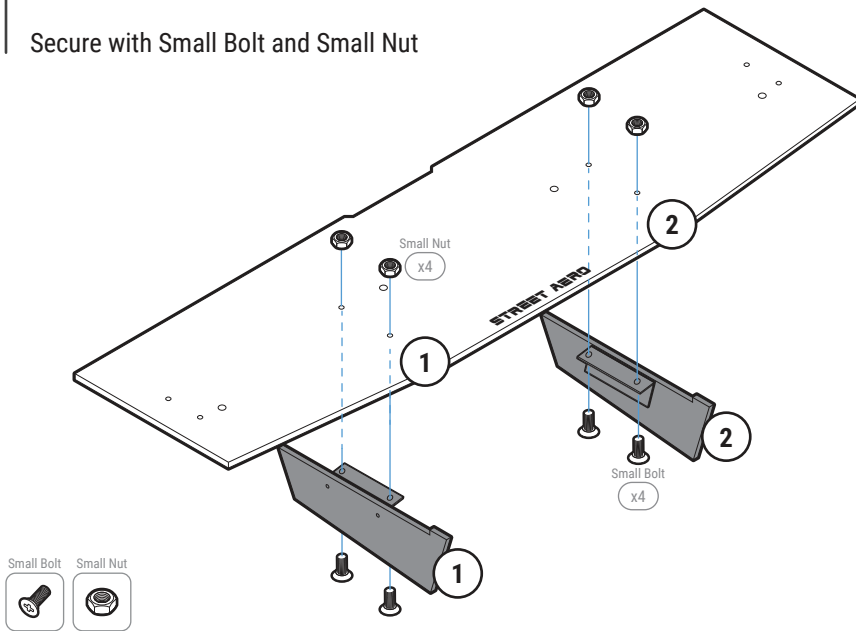


STEP: 1 Assemble Main Panel

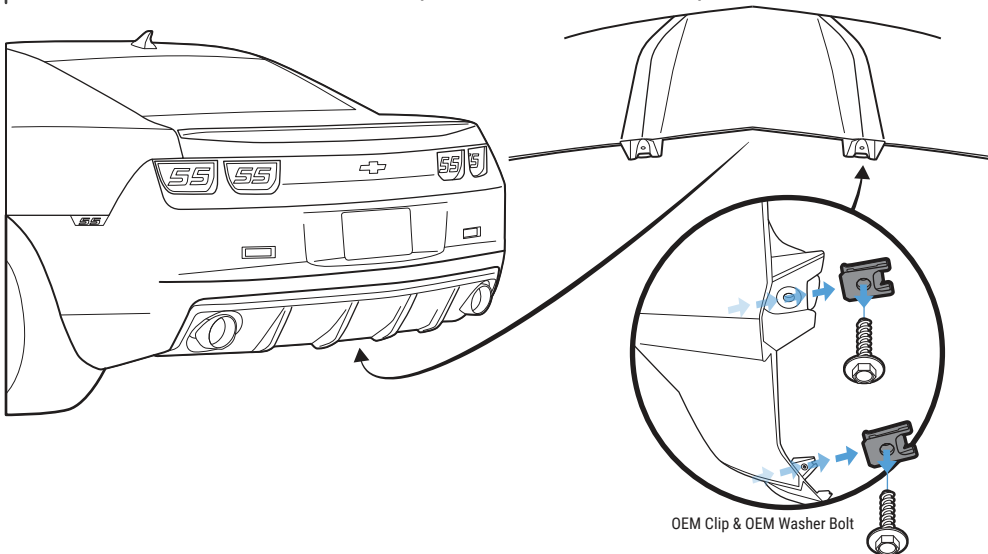
Carefully place Fin 1 and Fin 2 onto the Main Panel
(Match the number on the Fin to the number on the Main Panel)

Secure with Small Bolt and Small Nut



STEP: 2 Remove OEM Washer Bolts and Clip

Remove the OEM Washer Bolt and Clip from the two center bumper fin



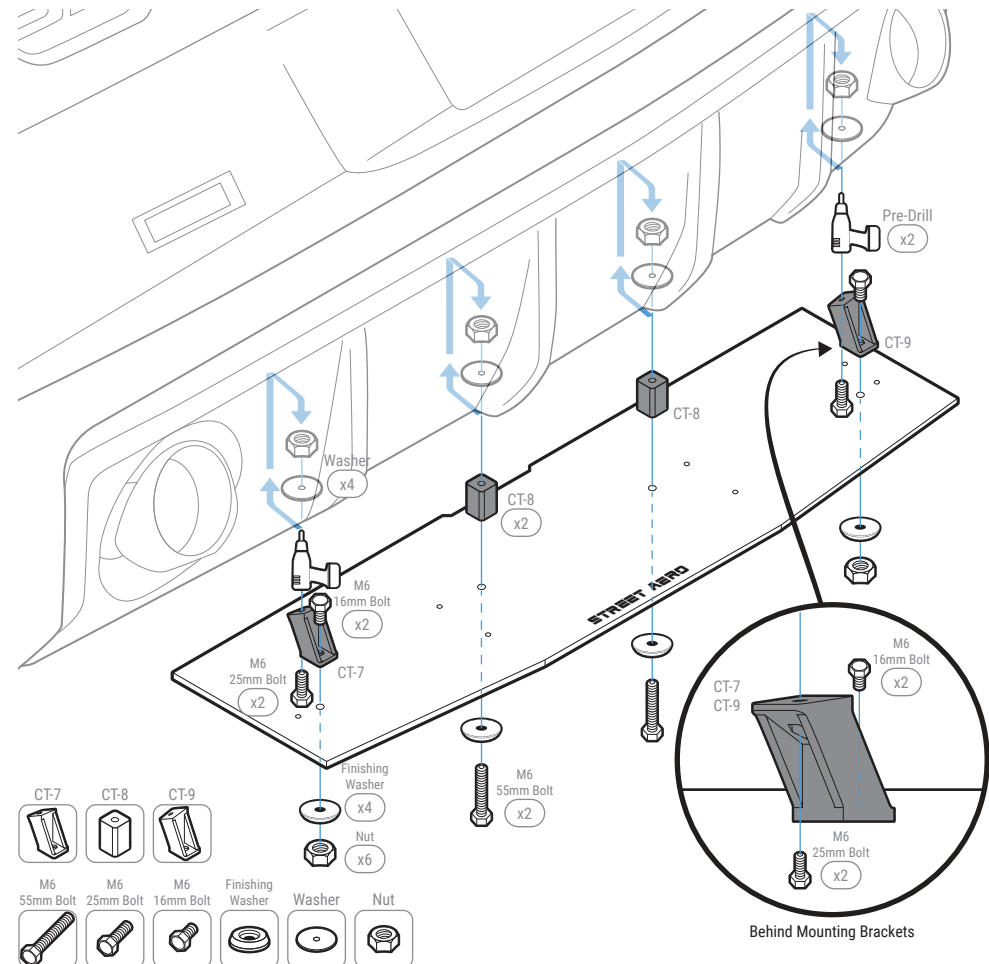
STEP: 3 Install Mounting Bracket

Mount the assembled Main Panel to the bumper by securing Mounting Bracket CT-8 to the OEM mounting hole on **STEP: 2** with M6 55mm Bolt, Finishing Washer, Washer, and Nut
NOTE: Reach under to place Washer and Nut inside the bumper

Align Mounting Bracket CT-7 and CT-9 to its correct location then Mark and Pre-Drill into the bumper
NOTE: Use the hole on top of CT-7 and CT-9 to mark the drill location
NOTE: Main Panel and Mounting Bracket may need to be removed before pre-drilling

Secure Mounting Bracket CT-7 and CT-9 to the bumper with provided M6 25mm Bolt, Washer, and Nut
NOTE: Reach under the bumper to place the Washer and Nut inside the bumper

Secure Mounting Bracket CT-7 and CT-9 to the Main Panel with provided M6 16mm Bolt, Finishing Washer, and Nut



IMPORTANT: DO NOT over tighten or use power tools to mount the Mounting Brackets

STEP: 4 *Mount the Rear Diffuser*

Attach and secure Mounting Bracket CT-10 and CT-11 to the Side Panel with M6 16mm Bolt, Finishing Washer, and Nut

NOTE: Push the bolt all the way into the socket to prevent it from falling out

Attach the Side Panel to the Main Panel with Small Bolt and Small Nut

NOTE: Do **Not** tighten Small Bolt (you will need to remove the Side Panel to pre-drill)

Mark where Mounting Bracket CT-10 and CT-11 will be mounted to the bumper

NOTE: Use the hole on top of CT-10 and CT-11 to mark the drill location

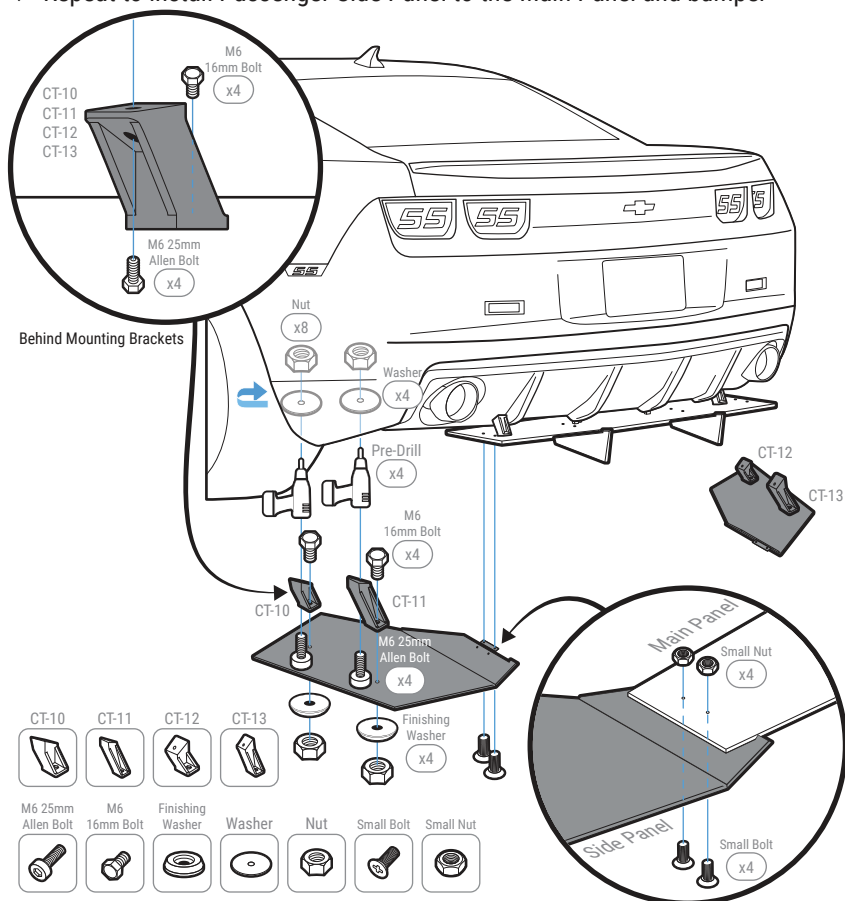
Pre-drill into the bumper

NOTE: Side Panel and Mounting Bracket may need to be removed before pre-drilling

Mount the Side Panel by securing Mounting Bracket CT-10 and CT-11 with M6 25mm Allen Bolt, Finishing Washer, Washer, and Nut

NOTE: Reach under or to the side of the bumper to place the Washer and Nut inside the bumper

Repeat to install Passenger Side Panel to the Main Panel and bumper



INSTALLATION GUIDE

2010-2013 Chevrolet Camaro

2SS (Dual Exhaust)

ACM Rear Diffuser

