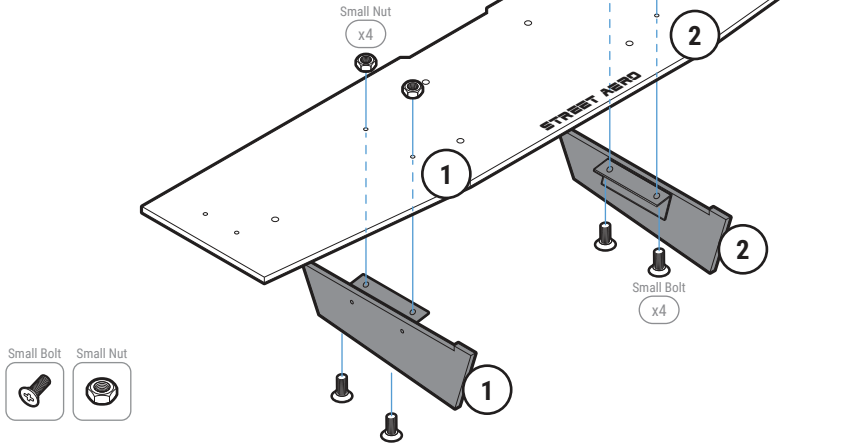


STEP: 1 Assemble Main Panel

Carefully place Fin 1 and Fin 2 onto the Main Panel
(Match the number on the Fin to the number on the Main Panel)

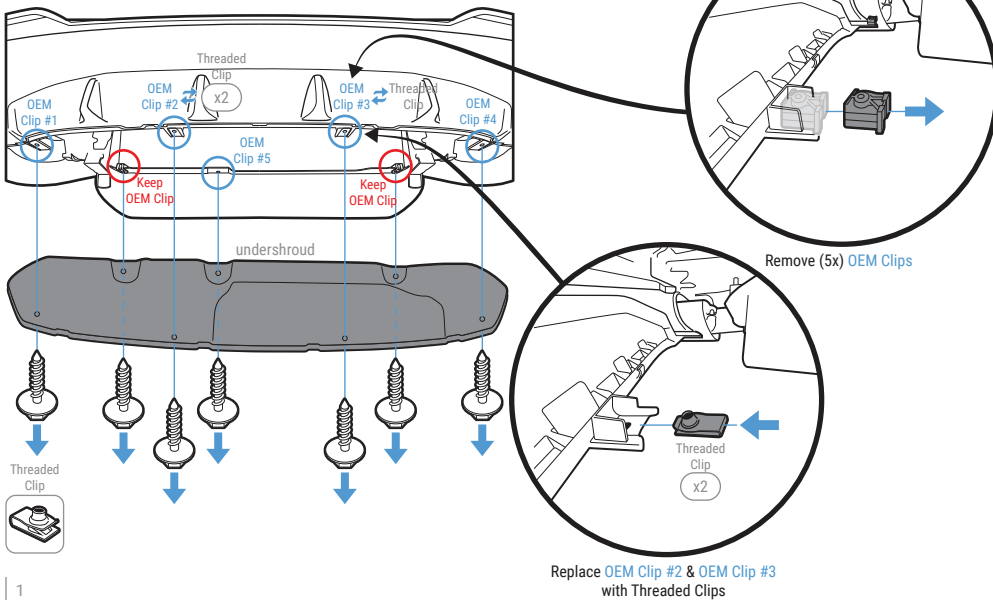
Secure with Small Bolt and Small Nut



STEP: 2 Remove OEM Push Pins

Remove the undershroud cover by removing the (7x) OEM Screw and (5x) OEM Clips from under the rear bumper

Replace OEM Clip #2 and #3 with Threaded Clip



STEP: 3 Install Main Panel

Attach the undershroud back to the bumper by securing the (2) OEM Screws to the (2) OEM Clips from **STEP: 2**

Mount the Main Panel to the undershroud by securing Mounting Bracket BW-1 to OEM hole #5 with M6 40mm Bolt, Finishing Washer, Washer, and Nut

NOTE: Reach under the bumper to place the Washer and Nut inside the bumper on top of the OEM hole

NOTE: Carefully bend the undershroud to reach inside the bumper

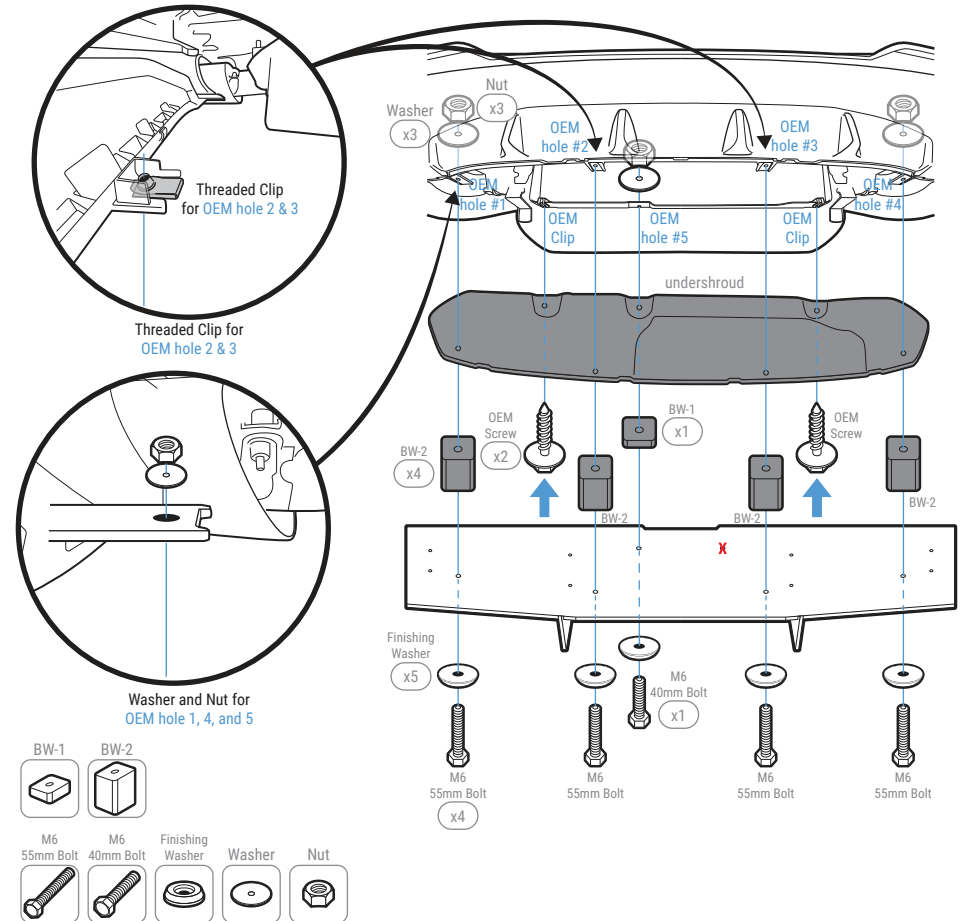
NOTE: Only use the left middle hole on the Main Panel

Continue mounting the Main Panel to the undershroud and bumper by securing Mounting Bracket BW-2 with M6 55mm Bolt, Finishing Washer, Washer, and Nut

NOTE: Reach under the bumper to place the Washer and Nut inside the bumper on top of the OEM hole

NOTE: Carefully bend the undershroud to reach inside the bumper

Finish mounting the Main Panel by securing Mounting Bracket BW-2 with M6 55mm Bolt into the Threaded Clip attached to OEM hole #2 and #4



IMPORTANT: DO NOT over tighten or use power tools to mount the Mounting Brackets

STEP: 4 *Mount the Rear Diffuser*

Remove the OEM Screws located under the bumper near the rear wheels to get access to the inside of the bumper

NOTE: We recommend removing the Splash Guard to get access behind the bumper

Attach and secure Mounting Bracket BW-3 to the Side Panel with M6 16mm Bolt, Finishing Washer, and Nut

NOTE: Push the Bolt all the way into the socket to prevent it from falling out

Attach the Side Panel to the Main Panel with Small Bolt and Small Nut

NOTE: Do not tighten the bolt you will need to remove the Side Panel in order to Pre-drill

Align and mark where Mounting Bracket BW-3 and BW-4 will be mounted to the bumper

NOTE: Use the hole on top of the Mounting Brackets to mark the drill location

Pre-drill into the bumper then

NOTE: Mounting Brackets will need to be removed before drilling

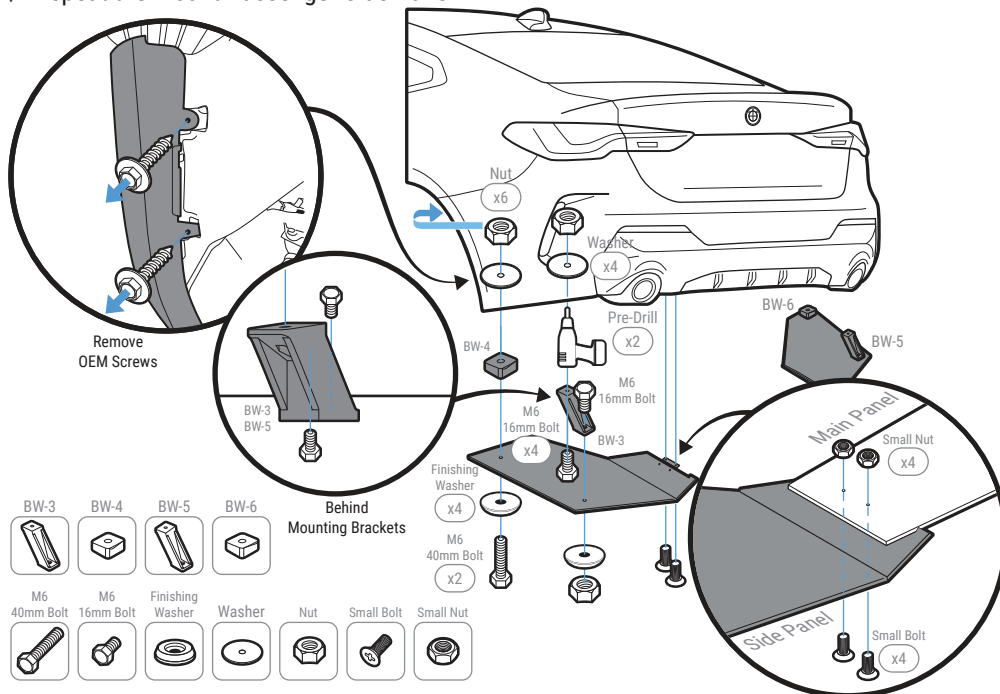
Mount the Side Panel by securing Mounting Bracket BW-3 with M6 16mm Bolt, Washer, and Nut to the bumper

NOTE: Reach under the bumper to place the Washer and Nut inside the bumper on top of the OEM hole

Secure Mounting Bracket BW-4 with M6 40mm Bolt, Finishing Washer, Washer, and Nut

NOTE: Reach under the bumper to place the Washer and Nut inside the bumper on top of the OEM hole

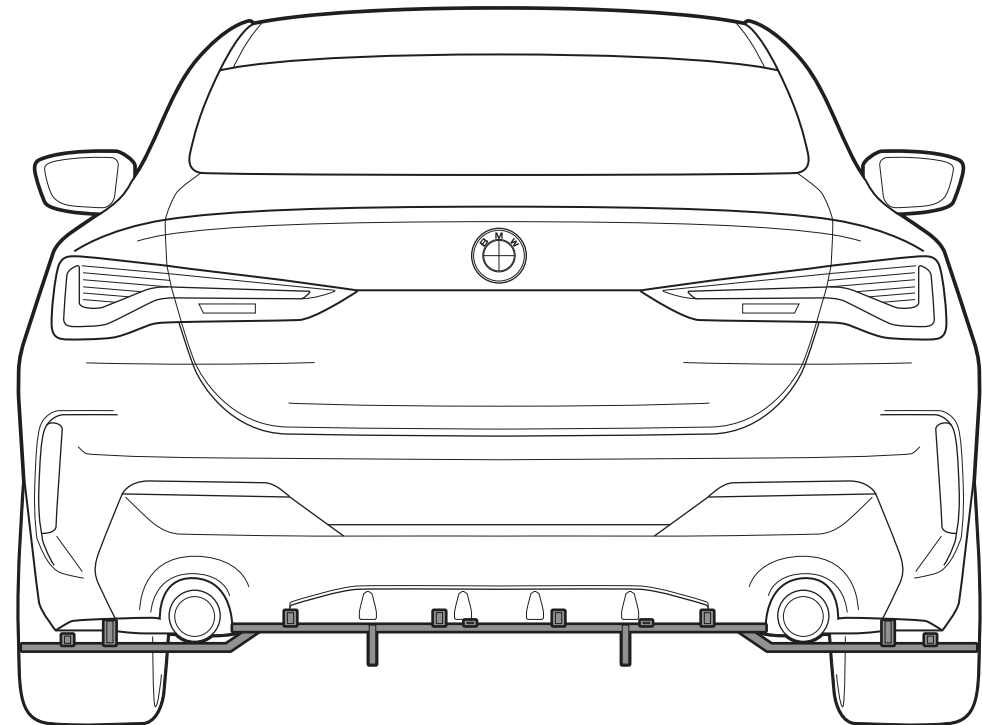
Repeat the Mount Passenger Side Panel



INSTALLATION GUIDE

2022 BMW 430i Coupe

ACM Rear Diffuser



s-rda-bmw-03-e1

www.streetaero.com

