

**Mercury Gen II 8.2 G2: Corsa Diverter Water Injection Installation**  
**Hose & Clamp Kits 10860, 10860-NR and 10861**

\*The following installation procedure will be identical for the Port and Starboard side of the engine.

- Make sure the hardware kit contains the following seen in **Figure 1**

**10860-NR Kit Contains:**

- A1.** Brass Hose Plug (2) which are inserted into A2
- A2.** Straight Brass Hose Fitting (2)
- B.** 7/16 Hose Clamps (4)
- C.** 1/4" 90° Brass Hose Fittings (2)



**Figure 1**

- **10860 Kit** contains the same as above in **Figure 1** and the following in **Figure 2**  
See **Step 9** for installation instruction for Restrictor and Engine Serial Number information.

- D.** Brass Restrictor Insert (1)



**Figure 2**

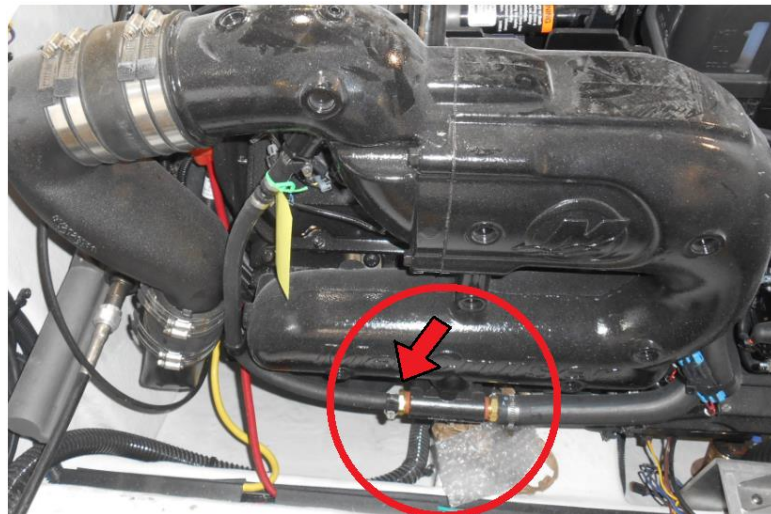
- **10861 Kit** contains the same as above in **Figure 1 and 2** plus the following in **Figure 3**  
E. 1/8" 90° Brass Hose Fittings (2)



**Figure 3**

# Installation

1. Loosen the rear most hose clamp on the rear hose and remove the hose from the poppet valve. Retain hose clamp. See **Figure 4**.
2. Remove the rear most brass tube fitting from the poppet valve. See **Figure 4**.



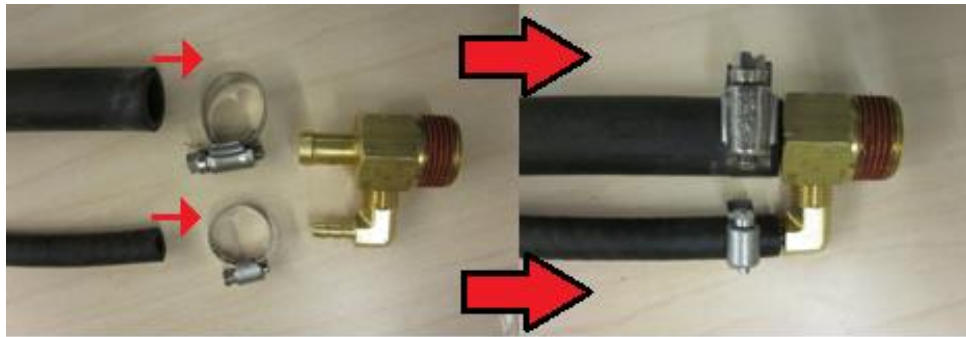
**Figure 4**

3. Install **A2** onto the poppet valve. Unscrew **A1** from **A2** then screw **C** in place of **A1**. Make sure to put Loctite thread sealant on **C** so it does not leak water. Proper orientation can be seen below in **Figure 5**.



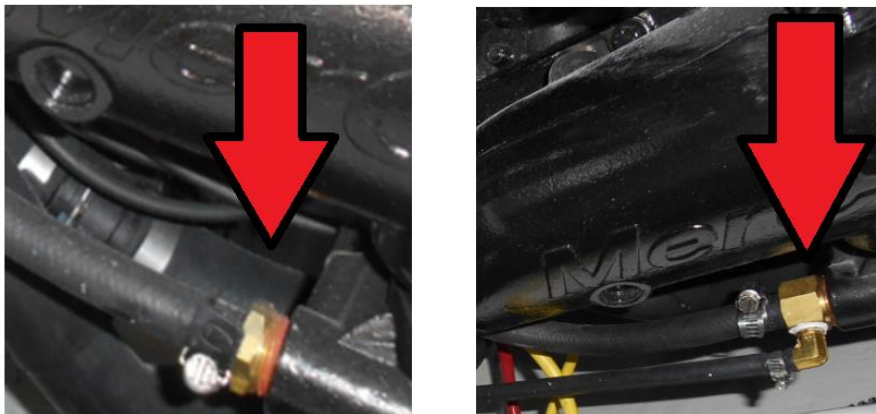
**Figure 5**

4. Connect the supplied hose to **C** using **B**. Reconnect the hose taken off in **Step 2** to **A2** using the existing hose clamp. See **Figure 6**.



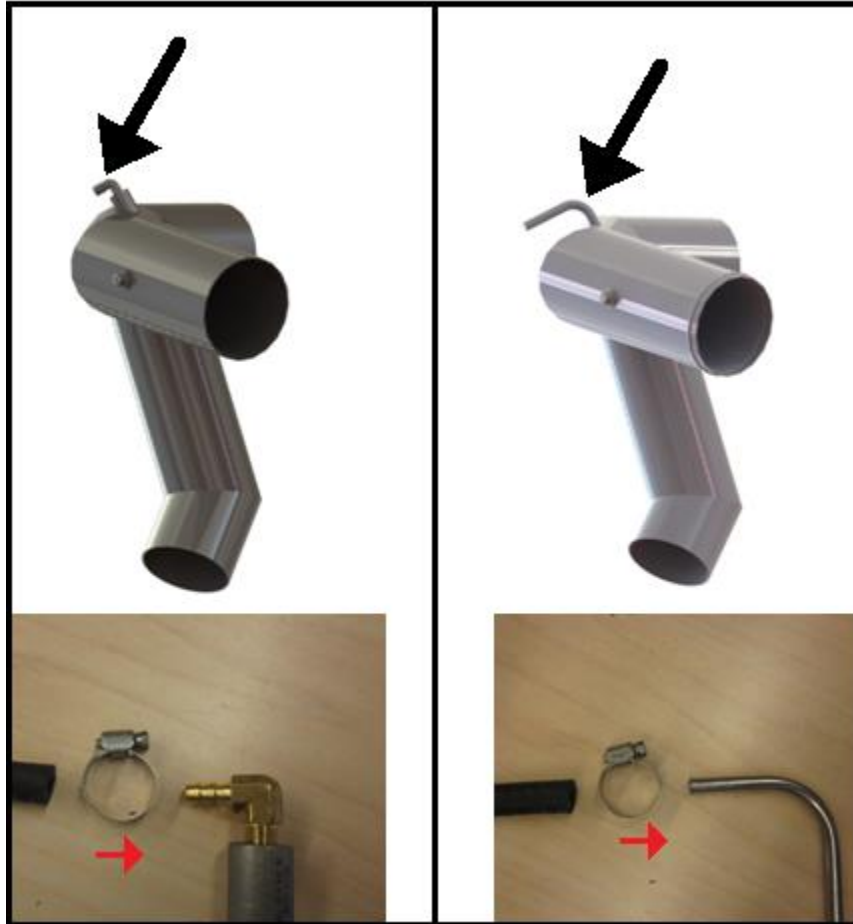
**Figure 6**

**\*\*Figure 7** is before and after as reference of proper installation.



**Figure 7**

5. The diverters come in two configurations and can be seen in **Figure 8**.
- A) If the diverter does not have a nipple welded on it, apply Loctite thread sealant onto **E** and screw it into threaded section on top of the diverter. Attach the supplied hose leading from the poppet valve onto **E** using **B**.
  - B) If the diverter has a nipple welded on it, attach the supplied hose leading from the poppet valve onto the nipple using **B**.



**Figure 8**

***\*Make sure the hose runs behind and not in front of the diverter. Use Ty-Wraps to keep it in place***

8. Make sure all fittings and hose clamps are properly tightened and check for leaks.

**\*For 10860 and 10861 Kits**

9. Verify Serial Number of engine. The restrictor **D** is not required on engines with serial number greater than listed below.

**8.2L and Corsa Installations**

- Mercury added the restrictor into the heat exchanger for water balancing on Corsa system.
- If serial number is greater than the below number, **no brass restrictor is required.**
- Serial number break:
  - **2A452492**
  - **Started on 3/24/15**
- **New heat exchanger part number:**
  - 8M0088362 replaced 8M2017231



Company Confidential  
4

10. If engine's serial number is less than the number listed above, follow the instruction below to for installation of the Brass Restrictor Insert **D**.

## RESTRICTOR KIT—8.2 STERNDRIVE SINGLE CATALYST EXHAUST MANIFOLD

**IMPORTANT:** This document guides our dealers, boatbuilders, and company service personnel in the proper installation or service of our products. If you have not been trained in the recommended servicing or installation procedures for these or similar Mercury Marine products, have the work performed by an authorized Mercury Marine dealer technician. Improper installation or servicing of the Mercury product could result in damage to the product or personal injury to those installing or operating the product.

**NOTE:** After completing installation, place these instructions with the product for the owner's future use.

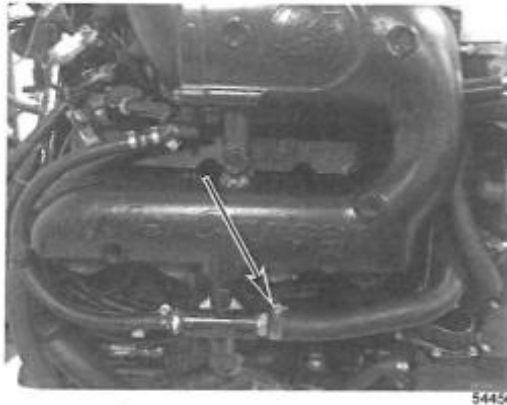
### Components Contained in Kit

Qty.	Description
1	Restrictor

### Restrictor Installation

**IMPORTANT:** This restrictor should be used only on vessels that are equipped with Corsa side outlet switchable exhaust systems.

1. Allow the engine to cool.
2. Loosen the hose clamp securing the front hose on the starboard side exhaust manifold poppet assembly, and remove the hose. Retain the hose clamp.



3. Insert the restrictor into the poppet assembly fitting. Ensure the restrictor is flush with the poppet assembly fitting.



4. Ensure the hose clamp is on the hose, and install the hose onto the poppet assembly fitting. Tighten the hose clamp to the specified torque.