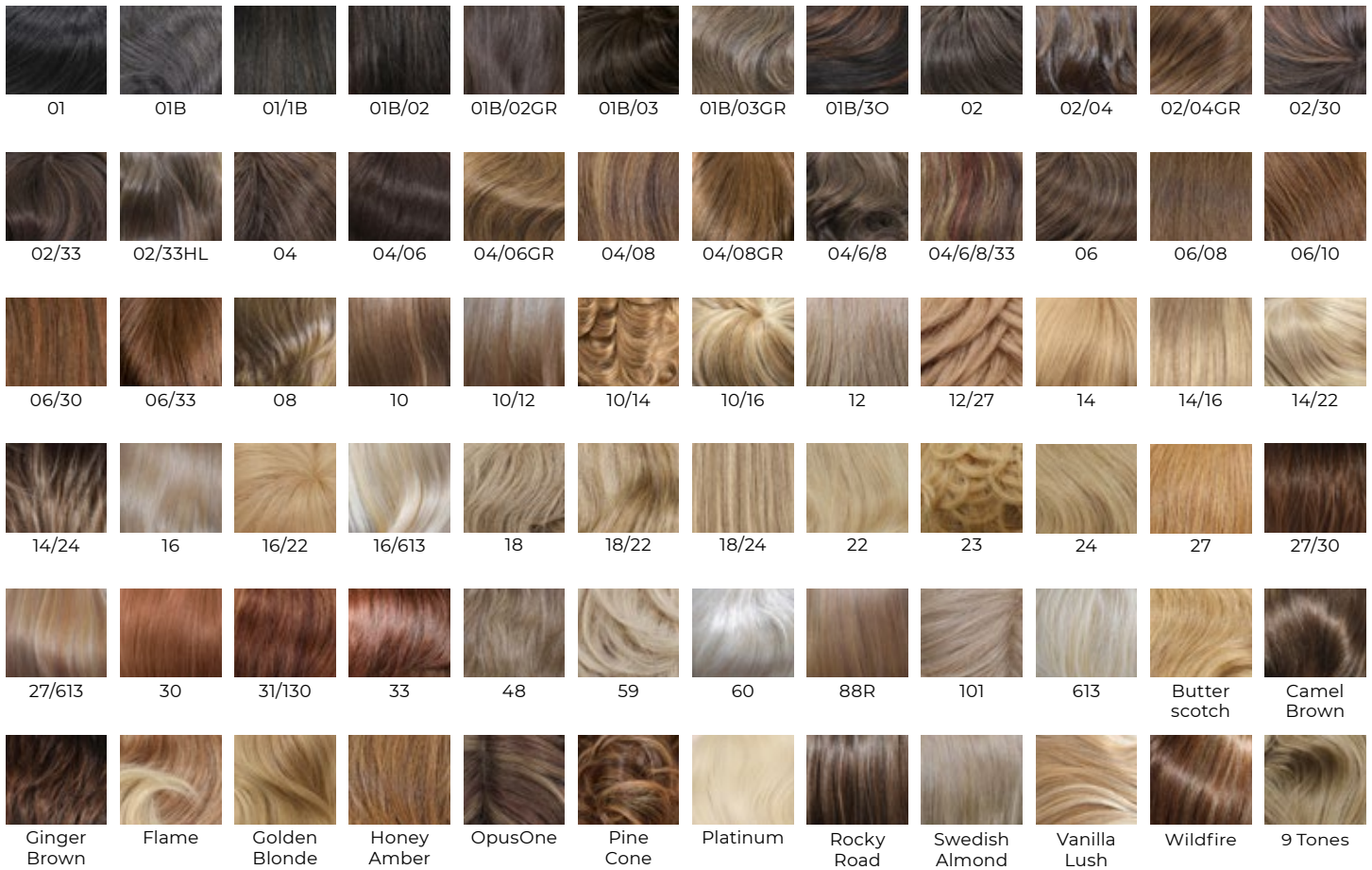


COLOR GUIDE

HUMAN HAIR COLORS



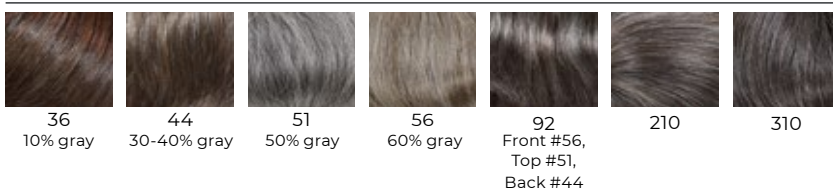
Tipped Colors



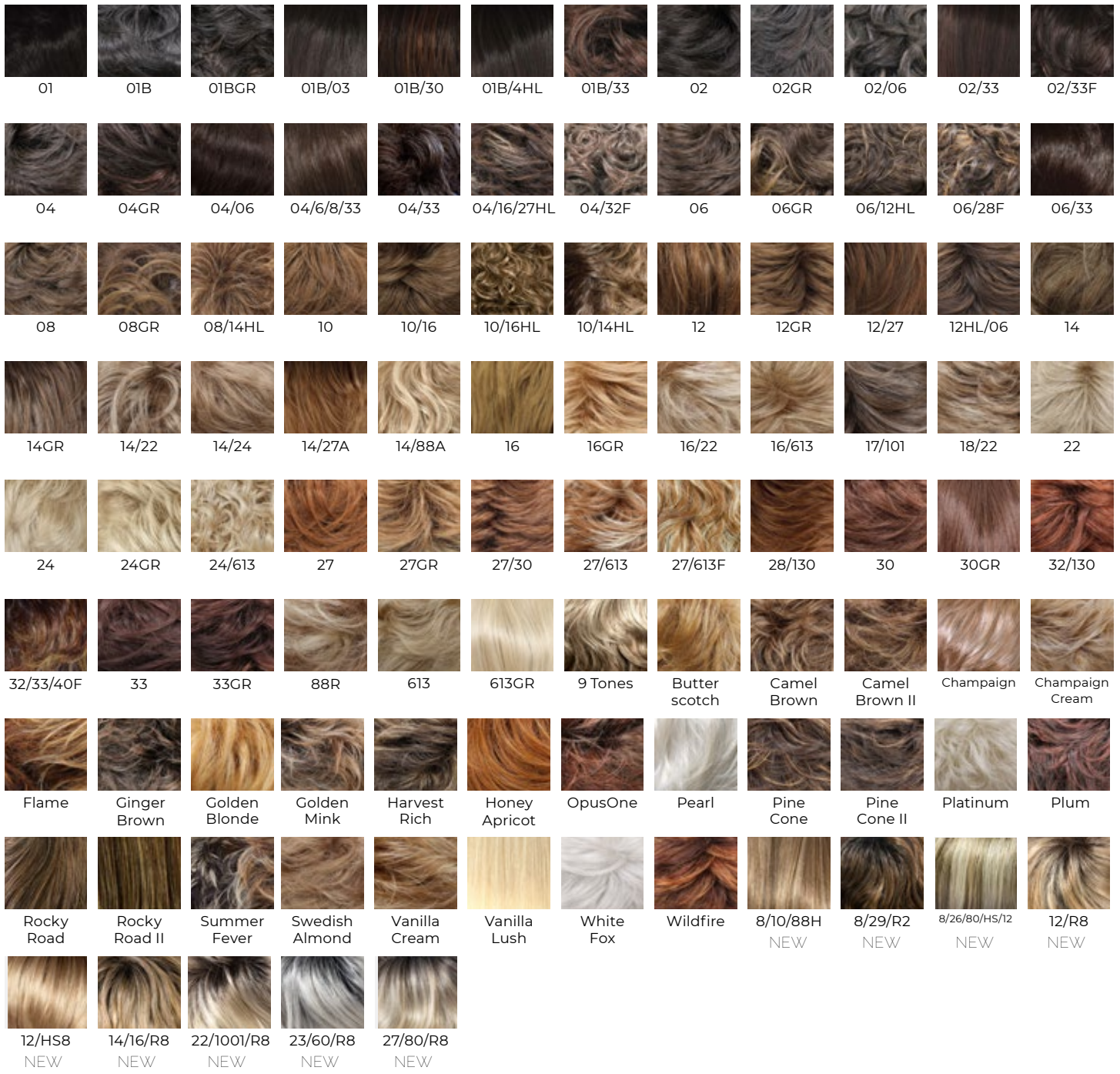
Rooted Colors



Grays



SYNTHETIC HAIR COLORS



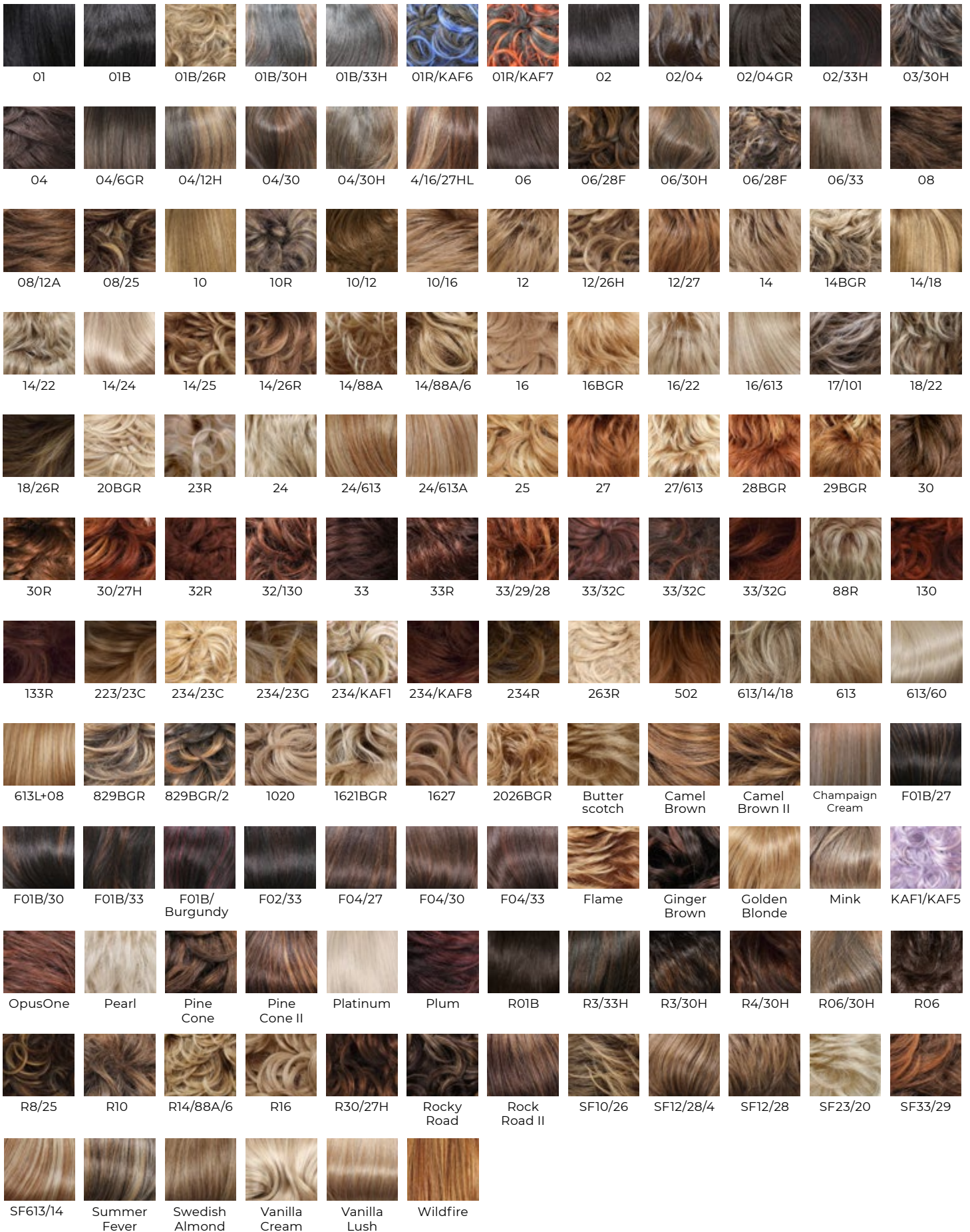
Tipped Colors



Grays



BALI SYNTHETIC HAIR COLORS



Bali Tipped Colors



04/35T 6/10T 6/30T 8/27T 8/27T 10/14T 14/16T 21T 24B/18T 27T 33B/27T R21T

Bali Grays



36 10% gray 37 10% gray 38 10% gray 44 30-40% gray 48 10% gray 51 50% gray 56 60% gray 59 90% gray 60 Snow White 92 Front #56, Top #51, Back #44 93 Front #59, Top #56, Back #51 280 15% Grey



WhiteFox

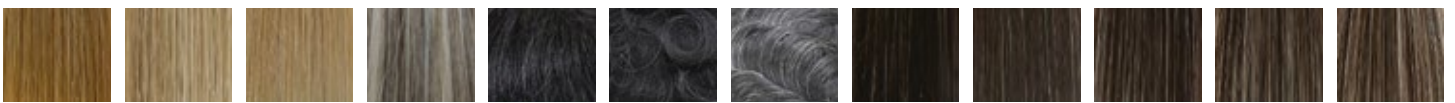
MENS HAIR COLORS



01 01B 01B/30 01B05 01B10 01B20 01B30 01B40 01B60 01B80 02 03



04 04/06/08 05 06 06/10 07 08 10 12 14 16 17



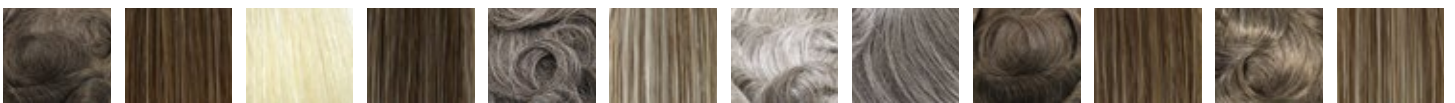
18 20 22 92 0103 0105 0110 0205 0210 0220 0230 0240



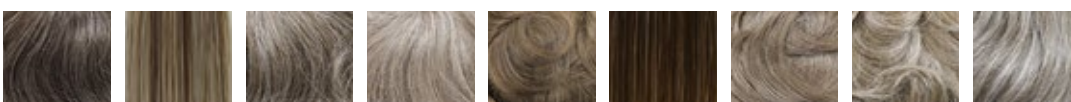
0260 0280 0305 0310 0320 0330 0340 0360 0380 0405 0410 0420



0430 0440 0450 0460 0470 0480 0505 0510 0520 0540 0560 0580



0605 0610 613 0620 0640 0650 0660 0680 0705 0710 0720 0730



0740 0750 0760 0780 0805 0810 1010 1820 1860

Color Rings

1000 - Human Hair Color Ring

5000A - Synthetic Hair Color Ring

BA5000 - Bali Synthetic Hair Color Ring

4500 - OCH Extensions Color Ring

4000 - Men's Color Ring

Wig Pro Human hair Color Descriptions

Color	Description
1	Jet Black
1B	Off Black
1B/30	Off Black blended with Medium Auburn
2	Darkest Brown
2/4	Darkest Brown w/ Dark Brown
02/04GR	Darkest Brown w/ Dark Brown Front and Temple
2/33	Darkest Brown w/ Dark Auburn
4	Dark Brown
04/06	Dark Brown w/Medium Chestnut Brown
4/6/8/33	Darkest Brown blended with medium and light chestnut brown and dark auburn
6	Medium Chestnut Brown
6/10T	Medium Chestnut Brown tipped w/ Medium Golden Brown
6/30T	Medium Chestnut Brown tipped w/ Medium Auburn
6/33	Medium Chestnut Brown tipped w/ Dark Auburn
8	Light Chestnut Brown
8/14T	Light Chestnut Brown tipped w/ Honey Blonde
10	Medium Golden Brown
10/12	Medium Golden Brown w/ Light Golden Brown
10/14T	Medium Golden Brown tipped w/Honey blonde
10/16	Medium Golden Brown blended w/ Dark Ash Blonde
12	Light Golden Brown
12/27	Light Golden Brown w/Strawberry Blonde
14	Honey Blonde
14/16T	Honey Blonde tipped w/Dark Golden Ash Blonde
14/22	Honey Blonde blended w/ Ash Blonde
14/24	Honey Blonde blended w/ Light Golden Blonde
14/27A	Honey Blonde with Strawberry Blonde
16	Dark Golden Ash Blonde
16/22	Dark Golden Ash Blonde blended w/ Ash Blonde
16/613	Dark Golden Ash Blonde blended w/ Bleach Blonde
18	Ash Blonde
18/22	Light Ash Blonde blended w/ Beige Blonde
18B/24T	Ash Brown tipped w/ Light Golden Blonde
22	Beige Blonde
23	Champaign Blonde
24	Light Golden Blonde
27	Strawberry Blonde
27/30	Strawberry Blonde belnded w/ Medium Auburn
27/613	Strawberry Blonde blended w/ Bleach Blonde
30	Medium Auburn
30/27T	Medium Auburn tipped w/ Strawberry Blonde
31/130	Dark Auburn with Dark Copper Highlights
33	Dark Auburn
34	Darkest Brown with 5% gray
36	Medium Dark Brown blended w/ 6-10% gray
44	Dark Brown blended with 40-50% gray
48	Light Brown blended with 50-60% gray
51	Dark Brown blended with 70-80% gray
56	Dark Brown blended with 80-90% gray
60	Pure White
613	Bleach Blonde
88R	Strawberry Blonde tipped w/ Bleach Blonde
92	Dark brown blended with 90% gray on top, gradually darkening to 50% gray at ends
101	Platinum Blonde
9 tones	A unique blend of 9 warm tones in the blonde & brown family
Butterscotch	Harvest Blonde blended w/ Beige Blonde
Camel Brown	A make up of colors 6,8,12 - Blend of Medium Chestnut Brown, Light Chestnut Brown and Light Golden Brown.
Ginger Brown	DarkBrown, Medium Chestnut Brown highlighted w/ Medium Golden Brown
Dark Ginger Brown	A make up of colors 2,4,33 - Darkest Brown, Dark Brown and Dark Auburn
Flame	Medium Auburn base highlighted w/ Strawberry Blonde & Ash Blonde
Golden Blonde	4 color Blonde Blend = 14,24,613,88 Honey Blonde, Light Golden Blonde, Bleach Blonde, and Strawberry Blonde
Opus One	A make up of colors 31, 33, 6 - Blend of Medium Chestnut Brown, Medium Auburn and Dark Auburn
Pine Cone	A make up of colors 6,27,28 - Medium Brown, Strawberry Blonde, Red Soil with Golden Copper Highlights
Platinum	Brightest Blonde
Rocky Road	Chestnut Brown base highlighted Ash Blonde
Swedish Almond	Honey Blonde blended w/Medium Blonde
Vanilla Lush	27 and White Beach Blonde tipped w/ Bleach Blonde
Wild Fire	27+30+31+32 - Strawberry Blonde, Medium Auburn, with Copper highlights
H8	#1B, #2, #5, #30, #33B - Off Black, Darkest Brown, Medium Auburn & Dark Auburn
Rooted Colors	
2-1	Root 1B/04 - Off Black root, the rest is Dark Brown
2-4	Root 04/12 - Dark Brown Root, the rest is Light Golden Brown
2-6	Root 04/22 - Dark Brown Root, the rest is Beige Blonde
2-7	Root 6,8,33 /16 - Medium Chestnut Brown, Light Chestnut Brown, Dark Auburn Root, the rest is Dark Golden Ash Blonde
2-8	Root 1B,2/22 Off Black & Darkest Brown Root, the rest is Beige Blonde

WigPro Synthetic Color Description

a) Basic Color

1	Jet Black
2	Darkest Brown
4	Dark Brown
6	Medium Chestnut Brown
8	Light Chestnut Brown
10	Medium Golden Brown (Pecan)
12	Light Golden Brown
14	Dark Blond (Dirty Blonde)
16	Honey Blond(Dark Golden Ash Blonde)
22	Beige Blonde
24	Light Golden Blonde
27	Strawberry Blonde
30	Russet
33	Dark Auburn
613	Lightest Blonde
101	Light Ash Blonde

b) GR Color Base Front & Temple

1BGR	1B	4
2GR	2	6
4GR	4	30
6GR	6	12
8GR	8	12
10GR	10	14
12GR	12	14
14GR	14	24
16GR	16	16/613
22GR	22	613
24GR	24	613
27GR	27	14
30GR	30	27
33GR	33	27/30
613GR	613	1001

Tipped Color

06/10T	Medium Brown tipped with Pecan Brown
06/30T	Medium Brown Tipped with Russet
8/14T	Light Chestnut Brown tipped with Dark Blond
10/14T	Pecan Brown tipped with Dark Blonde
14/16T	Dark Blond tipped with Honey Blonde
14/27T	Honey Apricot= 27 Based highlighted with 14
24B/18T	Ash Brown tipped with Gold Blonde
30/27T	Russet tipped with Strawberry Blonde
33B/27T	Dark Auburn tipped with Strawberry Blonde

Grays

34	Darkest Brown (95%) Gray(5%)
36	Darkest Brown(90%+ Gray (10%)
37	Medium Brown (06) +Gray (10%)
38	Light Brown (08) + Gray (10%)
44	Darkest Brown (60~70%) + Gray (30~40%)
48	Medium Golden Brown (#10)+ Gray (10%)
51	Darkest Brown (50%)+ Gray (50%)
56	Darkest Brown (40%)+ Gray(60%)
59	Darkest Brown (10%)+ Gray (90%)
60	Snow White (60 +1001)
92	Front(#56)+Top (#51)+ Back (#44)
93	Front (#59) +Top(#56)+ Back (#51)
280	Darkest Brown (85%)+ Gray (15%)

WigPro Synthetic Colors

Frost Colors (Colors Rotated)

Color #	Description
14/22	Dark Blonde+ Beige Blonde
14/24	Dark Blonde+Gold Blonde
16/22	Honey Blonde+ Beige Blonde
16/613	Honey Blonde+ Lightest Blonde
17/101	Fade Brown+Ash Blonde
18/22	Ash Brown + Beige Blonde
27/30	Strawberry Blonde+ Russet
27/613	Strawberry Blonde+Lightest Blonde
28/130	Red Soil+ Coppery Red
32/130	Red wine+ Coppery Red

Highlight colors

Color #	Base	Highlighted
04/16/27H	04+27	16
8/28F	Light Chestnut Brown (08)	Brassy Red (28)
12HL6	Medium Brown (06)	Light Golden Brown (12)
14HL08	Light Chestnut Brown (08)	Dark Blond (14)
24B/18T	Ash Brown (18)	Light Golden Blond (24)
33B/27T	Dark Auburn (33)	Strawberry Blond (27)
16HL10	Pecan Brown (10)	Honey Blond (16)

New Colors

12/HS8	Light Golden Brown blended with Medium Golden Blonde and Chestnut Brown Roots
12/R8	Dark Blonde blended with Light Golden Blonde with a Warm Medium Brown Base
14/16/R8	Rooted Chestnut Brown blended with Honey Blonde tipped with Dark Ash Blonde
22/1001/R8	Ash Blonde base blended with Platinum Blonde Highlights and Chestnut Brown Roots
23/60/R8	Rooted Chestnut Brown with Platinum White base with Champagne Blonde highlights
27/80/R8	Strawberry Blonde and Gray Blend Rooted in Light Chestnut Brown
8/26/80/HS/12	Golden Brown blended with Sun Bleached Blonde and Chestnut Light Roots
8/29/R2	Darkest Brown Rooted with Chestnut Brown and Honey Apricot blend
8/10/88H	Light Chestnut Brown and Medium Golden Brown Blend With Light Blonde Highlights
14/88A	Honey Blonde blended with Neutral Blonde

Color #	Description
9 Tones	9 different colors irregularly mixed
ButterScotch	27+Gold+14 +ending with 24
Camel Brown	6+8+12
Flame	30+130+27+ ending with# 16
Ginger Brown	#04+#06+ highletd with #10
Gold Blond	#27+#16ending with 25
Honey Apricot	#14 highlighted with 27 Light
Opus One	Wine (31+32+33)
Pine Cone	06+08+ 27+ 28
Platinum	60+ 613+1001
Plum	Mulberry+33
Rocky Rd	#06+#08+14 irregular mixed
Summer Fever	02+04+08+12+highlghted with 16
Swedish Almond	#12+14+ 16 Irregularly mixed
Vanilla Cream	#16+highlghted with 24
Vanilla Lush	27+ ending with white Blonde
Wild Fire	27+31+32+ 30 +Gold

Bali Collection Special colors

R 1B ETC.	Oneshade darker colors ont the base 0.5~1"
08/12A	Light Chestnut Brown Frost with Darker 12 (Golden Brown)
14/88A	Dark Blond highlighted with various light blonds
829 BGR	08 (Medium Chestnut Brown) Highlited with 29 (Yellow Red)
613/14/18	Three Tones Frost

Special Irregular Frost

SF10/26	Medium Golden Brown + Sun Bleached Blonde
SF12/28	Light Golden Brown + Brassy Red
SF23/20	Champaign Blonde +Boldish Brown
SF33/29	Dark Auburn + Yellow Red
SF613/14	Lightest Blonde + Dark Blonde

Rooted Colors

Name	Root Color	Main
R14/88A+8	08 (Medium Chestnut Brown)	Dark Blonde highlighted with various light blonde
SF12/28+4	04 (Dark Brown)	Light Golden Brown + Brassy Red
613L+8	08 (Medium Chestnut Brown)	Gradual light ending with 613 (Lightest Blonde)
829 BGR +2	02 (Darkest Brown)	08 (Medium Chestnut Brown) Highlited with 29 (Yellow Red)