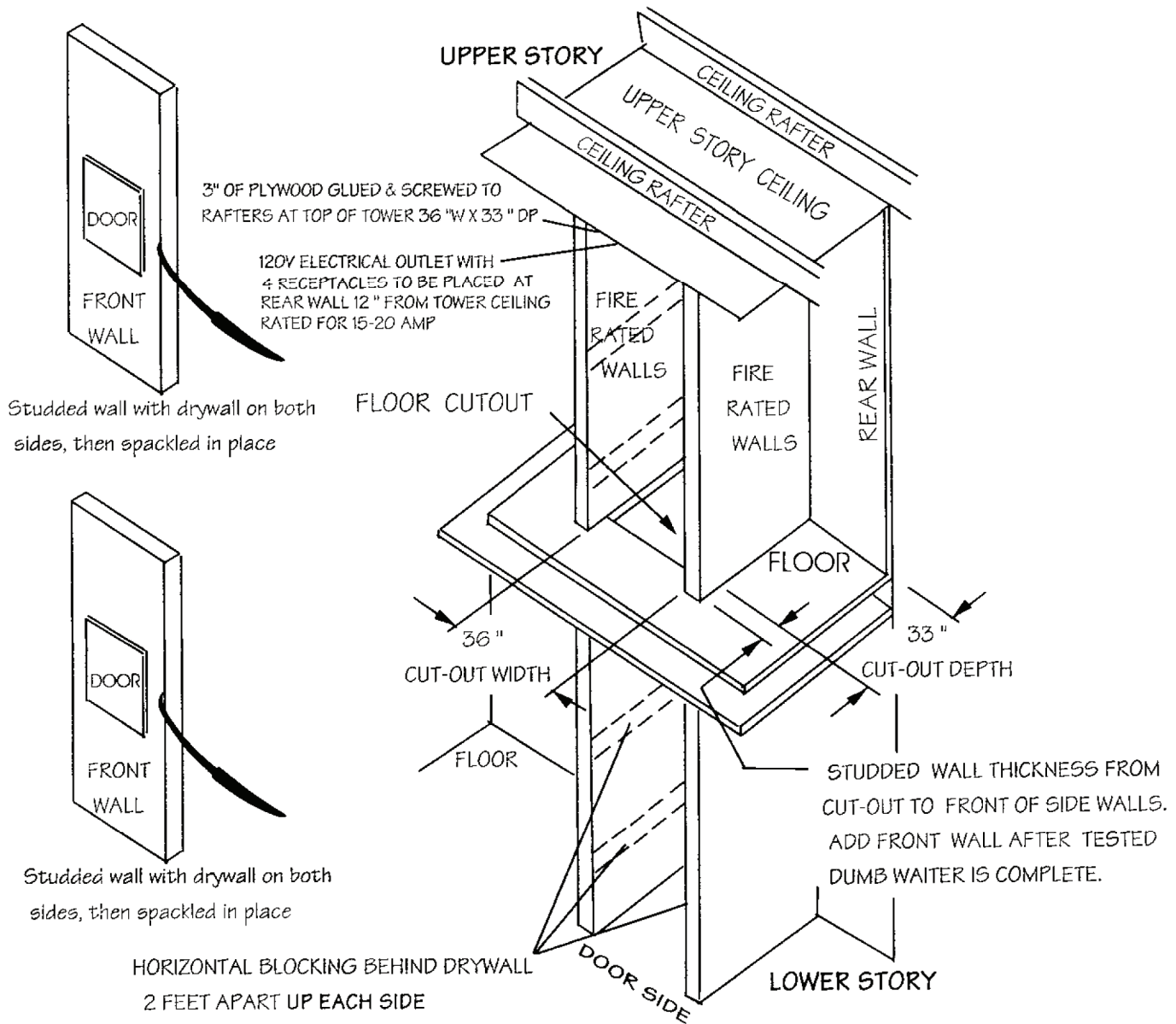


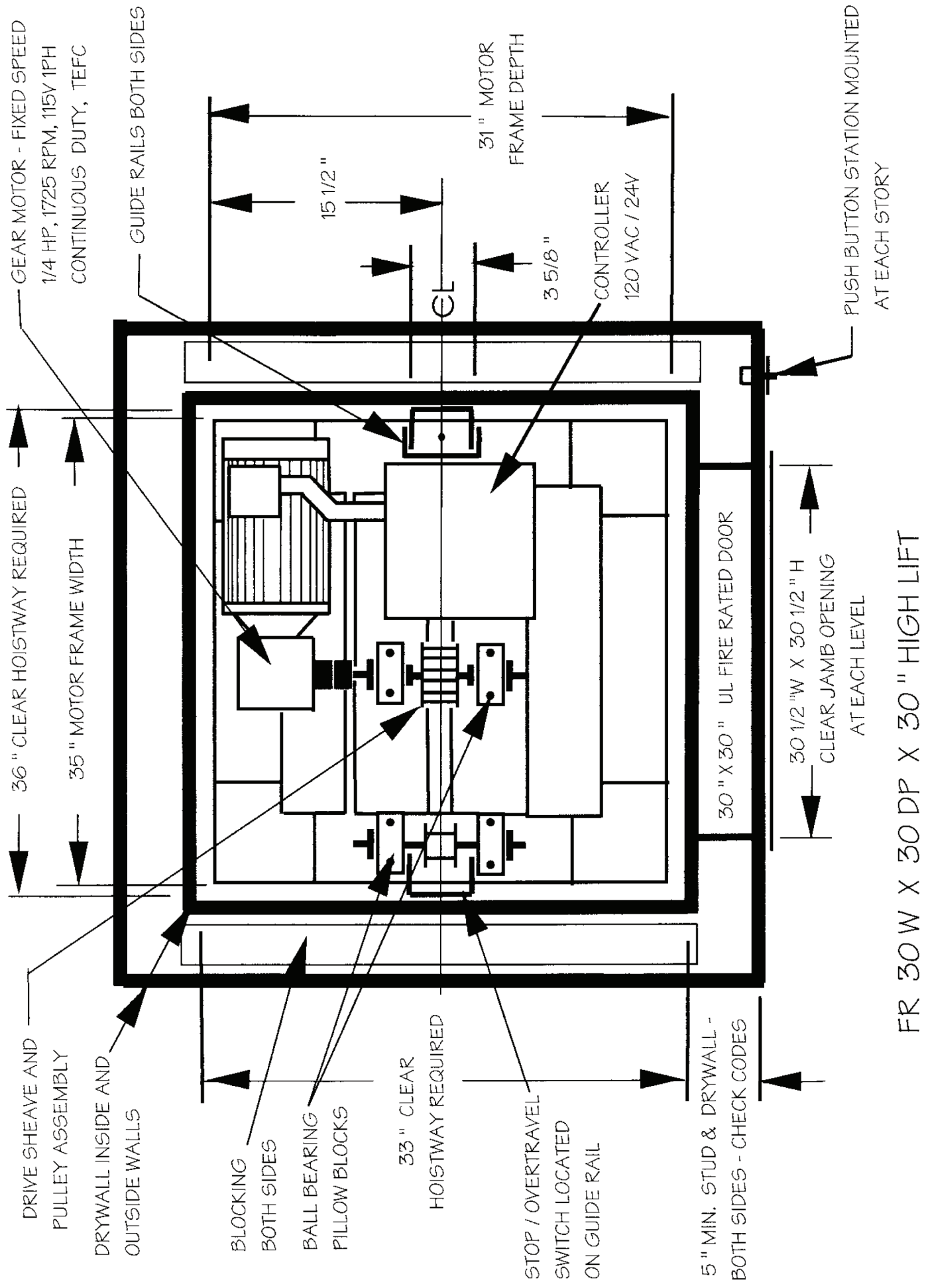
SITE PREPARATION FOR STANDARD "FR" LIFT W/ SIDE GUIDES



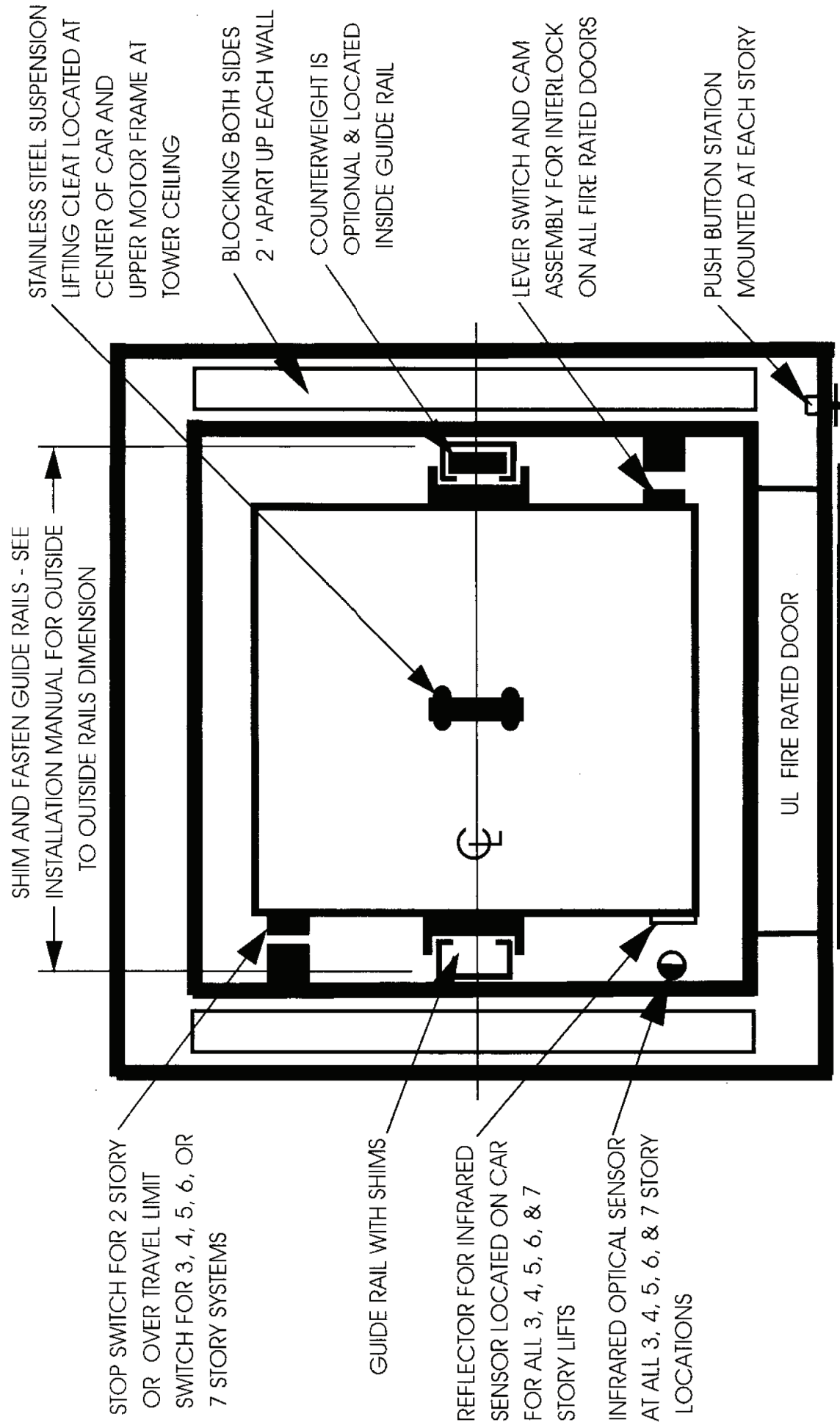
FLOOR CUT-OUT AND TOWER WALL LAYOUT TO CONSTRUCT TYPE "FR" LIFT TOWER

Lift type / Car size	Cut-out width	Cut-out depth
FR 30 x 30 / 30 "w x 30 "dp	36 "	33 "

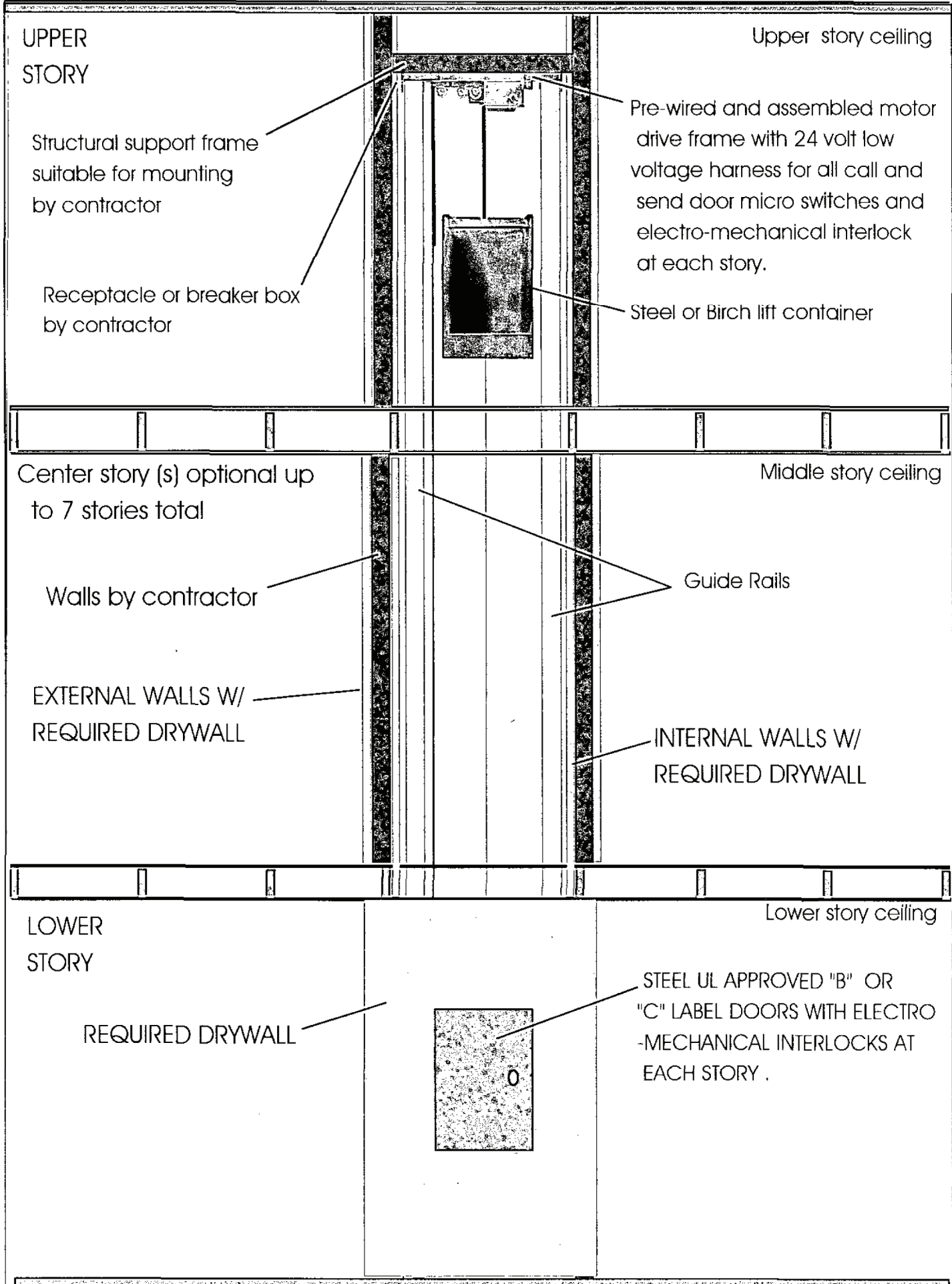
Customer to construct cut-out and walls as shown above. Inside tower dimensions shown are finished dry wall surface. Cynergy Lifts lift components to be installed before last front wall is set in as shown above.



FR 30 W X 30 DP X 30" HIGH LIFT



# GUIDE RAIL DETAILS



UPPER STORY

Upper story ceiling

Structural support frame suitable for mounting by contractor

Receptacle or breaker box by contractor

Pre-wired and assembled motor drive frame with 24 volt low voltage harness for all call and send door micro switches and electro-mechanical interlock at each story.

Steel or Birch lift container

Center story (s) optional up to 7 stories total

Middle story ceiling

Walls by contractor

EXTERNAL WALLS W/ REQUIRED DRYWALL

Guide Rails

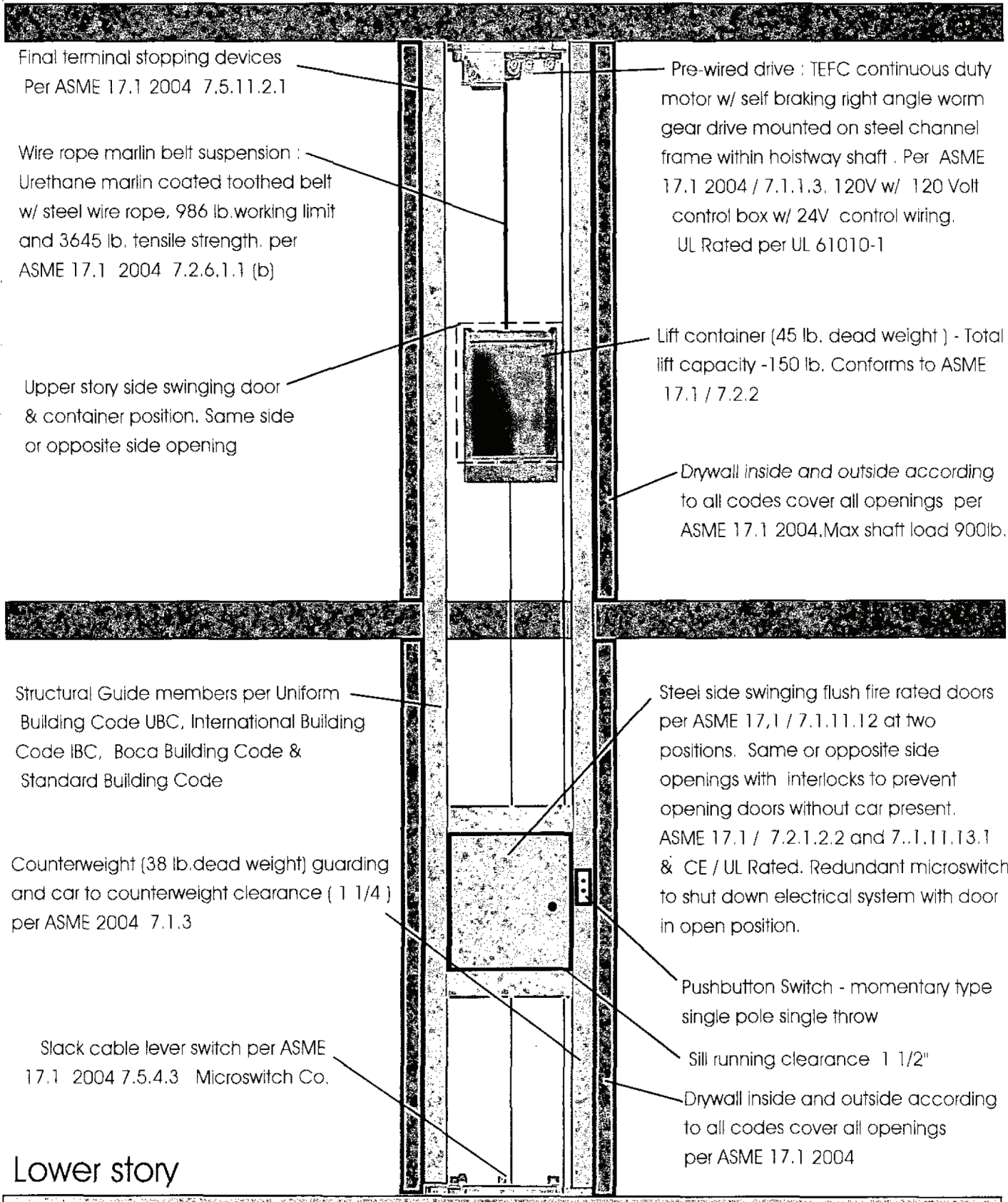
INTERNAL WALLS W/ REQUIRED DRYWALL

LOWER STORY

Lower story ceiling

REQUIRED DRYWALL

STEEL UL APPROVED "B" OR "C" LABEL DOORS WITH ELECTRO-MECHANICAL INTERLOCKS AT EACH STORY .



Final terminal stopping devices  
Per ASME 17.1 2004 7.5.11.2.1

Wire rope marlin belt suspension :  
Urethane marlin coated toothed belt  
w/ steel wire rope, 986 lb. working limit  
and 3645 lb. tensile strength. per  
ASME 17.1 2004 7.2.6.1.1 (b)

Upper story side swinging door  
& container position. Same side  
or opposite side opening

Pre-wired drive : TEFC continuous duty  
motor w/ self braking right angle worm  
gear drive mounted on steel channel  
frame within hoistway shaft . Per ASME  
17.1 2004 / 7.1.1.3. 120V w/ 120 Volt  
control box w/ 24V control wiring.  
UL Rated per UL 61010-1

Lift container (45 lb. dead weight ) - Total  
lift capacity -150 lb. Conforms to ASME  
17.1 / 7.2.2

Drywall inside and outside according  
to all codes cover all openings per  
ASME 17.1 2004. Max shaft load 900lb.

Structural Guide members per Uniform  
Building Code UBC, International Building  
Code IBC, Boca Building Code &  
Standard Building Code

Counterweight (38 lb. dead weight) guarding  
and car to counterweight clearance ( 1 1/4 )  
per ASME 2004 7.1.3

Slack cable lever switch per ASME  
17.1 2004 7.5.4.3 Microswitch Co.

Steel side swinging flush fire rated doors  
per ASME 17.1 / 7.1.11.12 at two  
positions. Same or opposite side  
openings with interlocks to prevent  
opening doors without car present.  
ASME 17.1 / 7.2.1.2.2 and 7.1.11.13.1  
& CE / UL Rated. Redundant microswitch  
to shut down electrical system with door  
in open position.

Pushbutton Switch - momentary type  
single pole single throw

Sill running clearance 1 1/2"

Drywall inside and outside according  
to all codes cover all openings  
per ASME 17.1 2004

Lower story

Patented & patents pending

## Codes related to Dumb Waiters