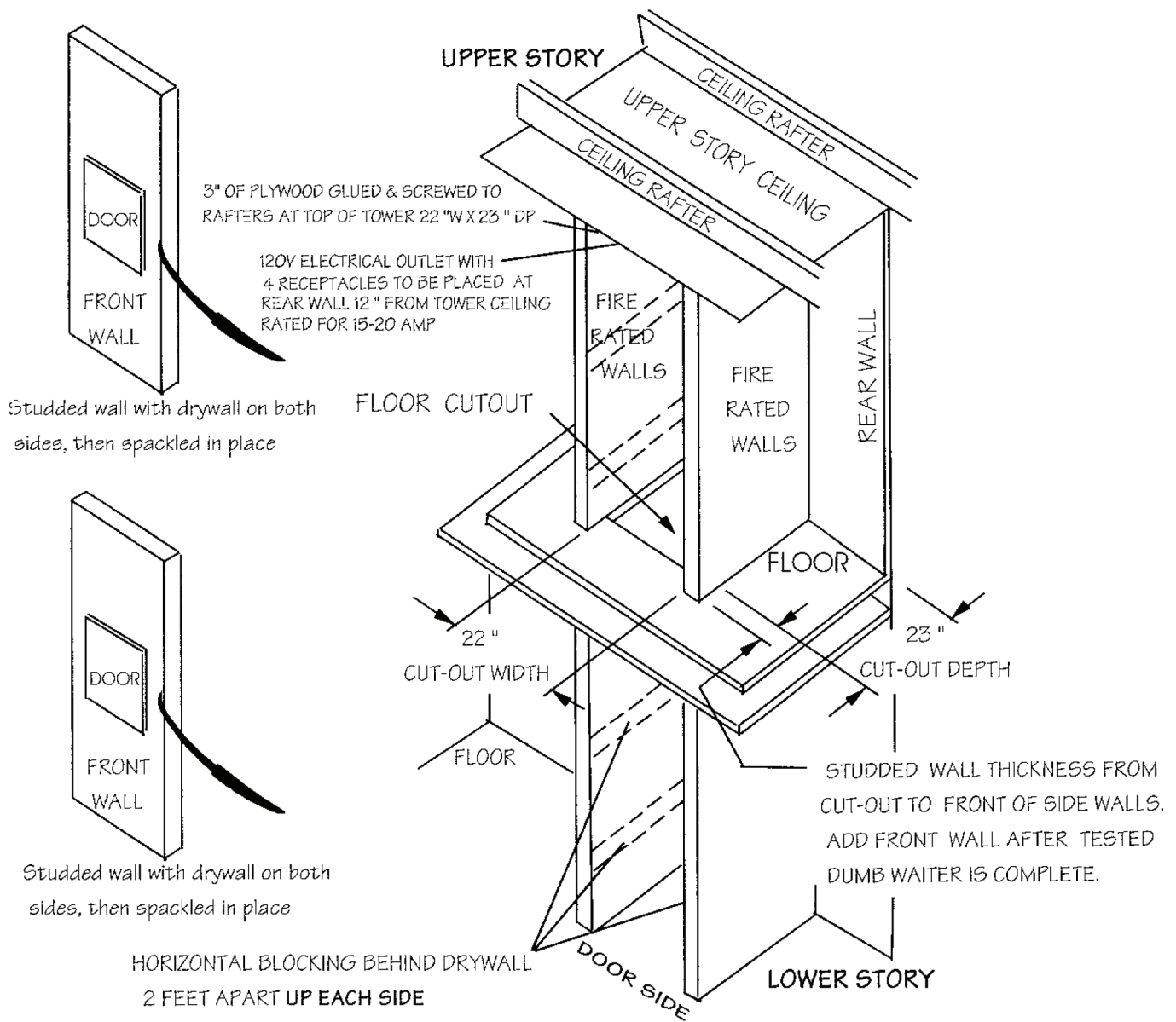


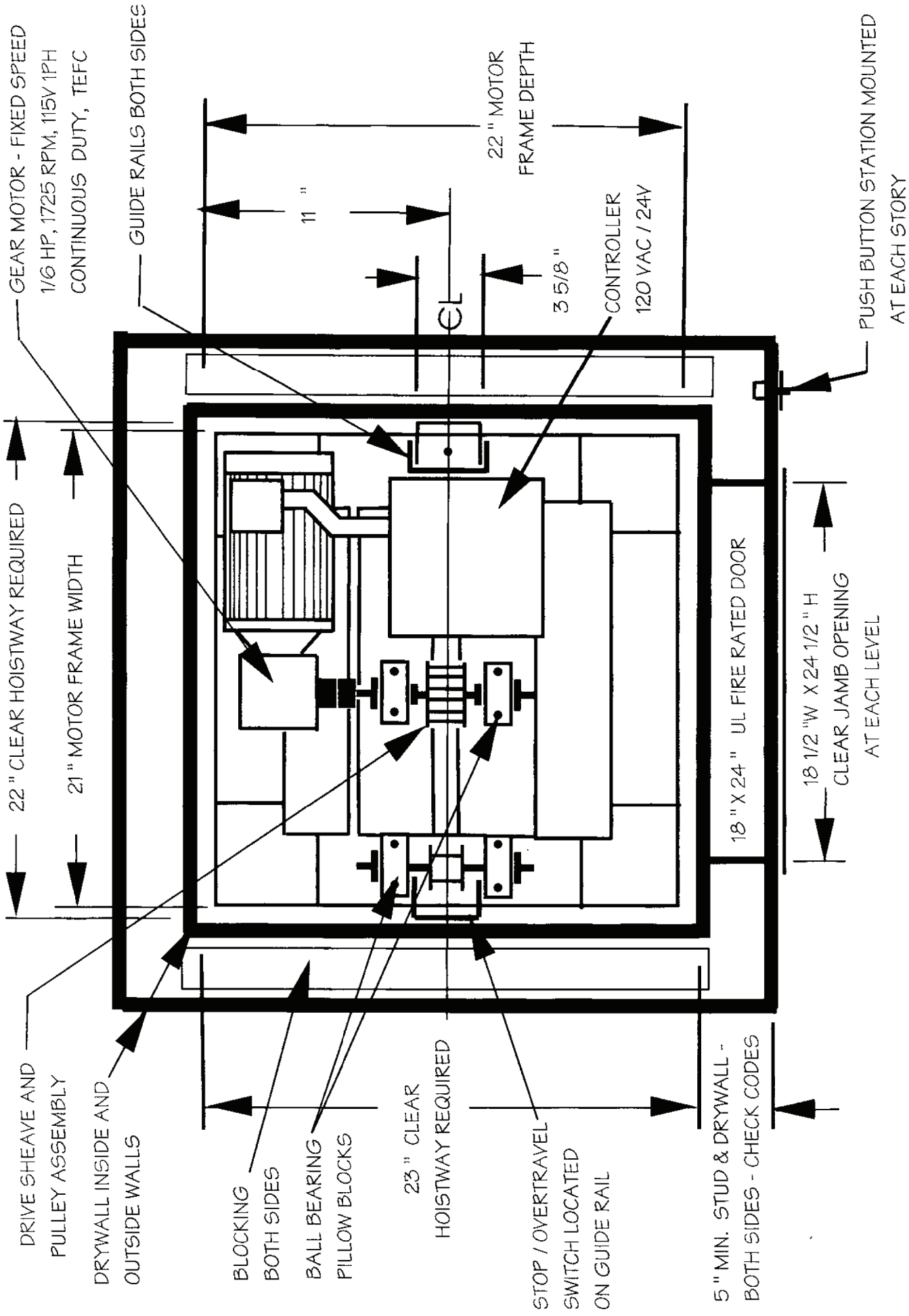
SITE PREPARATION FOR STANDARD "FR" LIFT W/ SIDE GUIDES



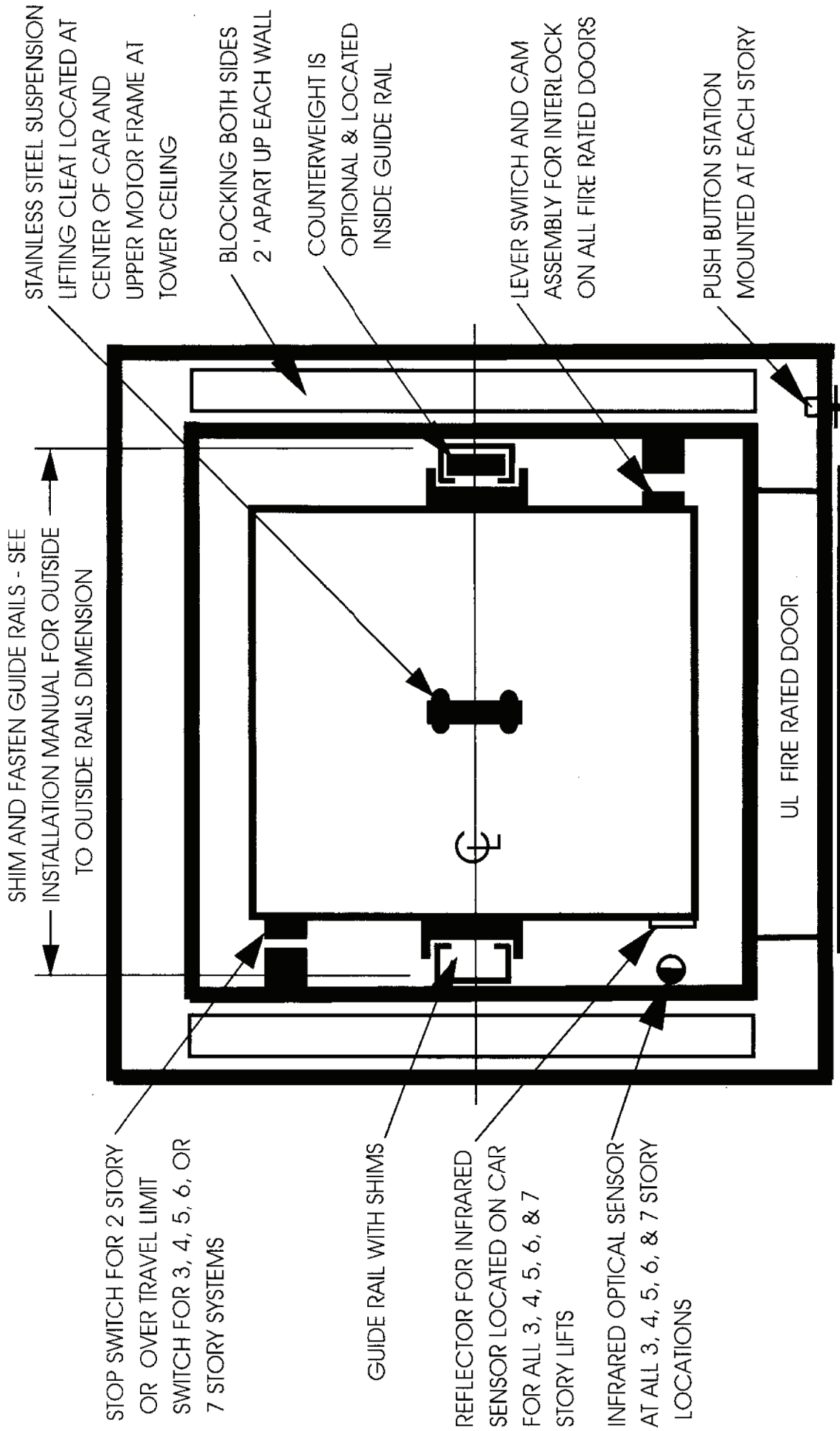
FLOOR CUT-OUT AND TOWER WALL LAYOUT TO CONSTRUCT TYPE "FR" LIFT TOWER

Lift type / Car size	Cut-out width	Cut-out depth
FR 16 x 21 / 16 "w x 21 "dp	22 "	23 "

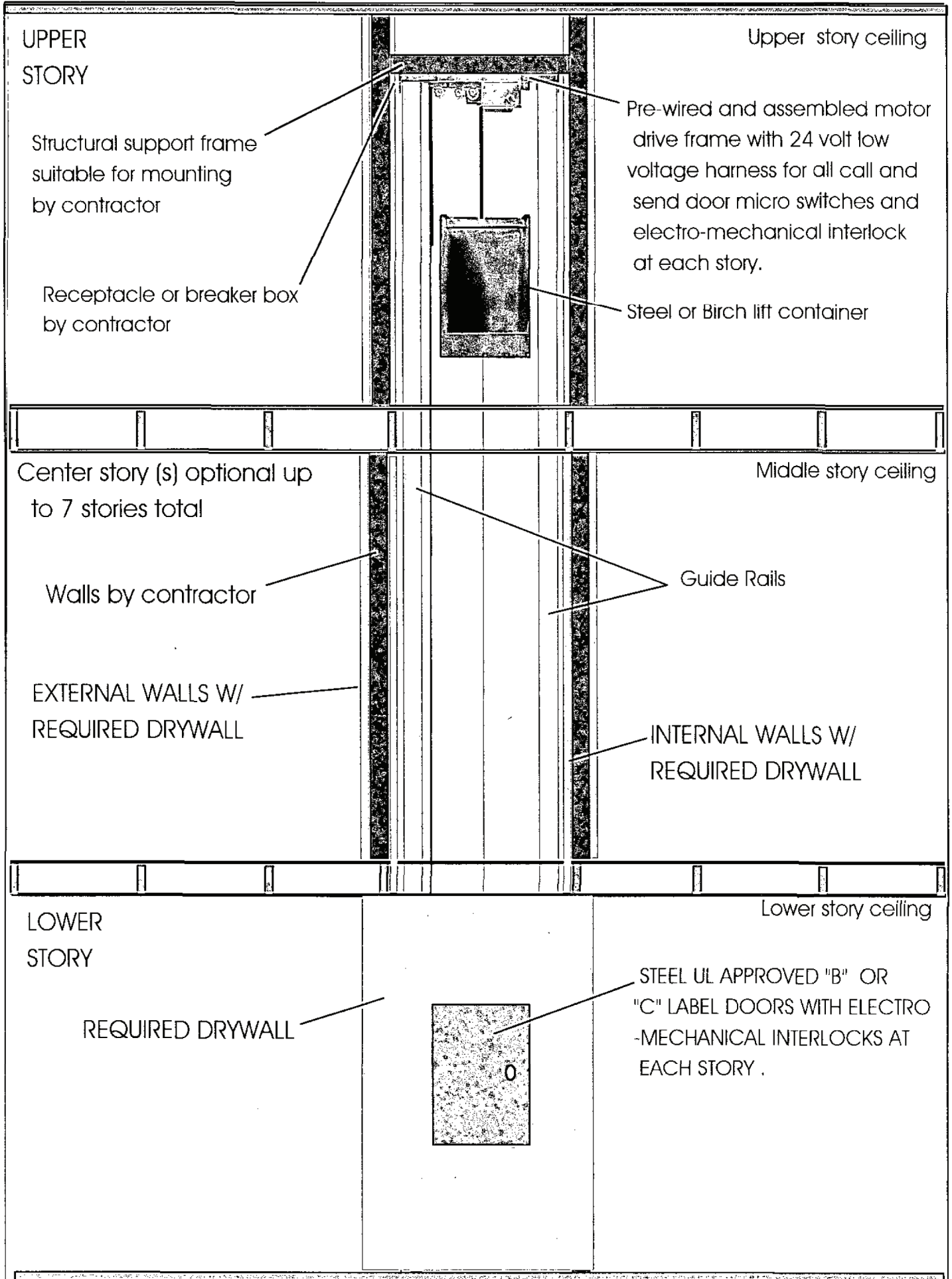
Customer to construct cut-out and walls as shown above. Inside tower dimensions shown are finished dry wall surface. Cynergy Lifts lift components to be installed before last front wall is set in as shown above.



FR 16 W X 21 DP X 24 HIGH LIFT



GUIDE RAIL DETAILS



UPPER STORY

Upper story ceiling

Structural support frame suitable for mounting by contractor

Pre-wired and assembled motor drive frame with 24 volt low voltage harness for all call and send door micro switches and electro-mechanical interlock at each story.

Receptacle or breaker box by contractor

Steel or Birch lift container

Center story (s) optional up to 7 stories total

Middle story ceiling

Walls by contractor

Guide Rails

EXTERNAL WALLS W/ REQUIRED DRYWALL

INTERNAL WALLS W/ REQUIRED DRYWALL

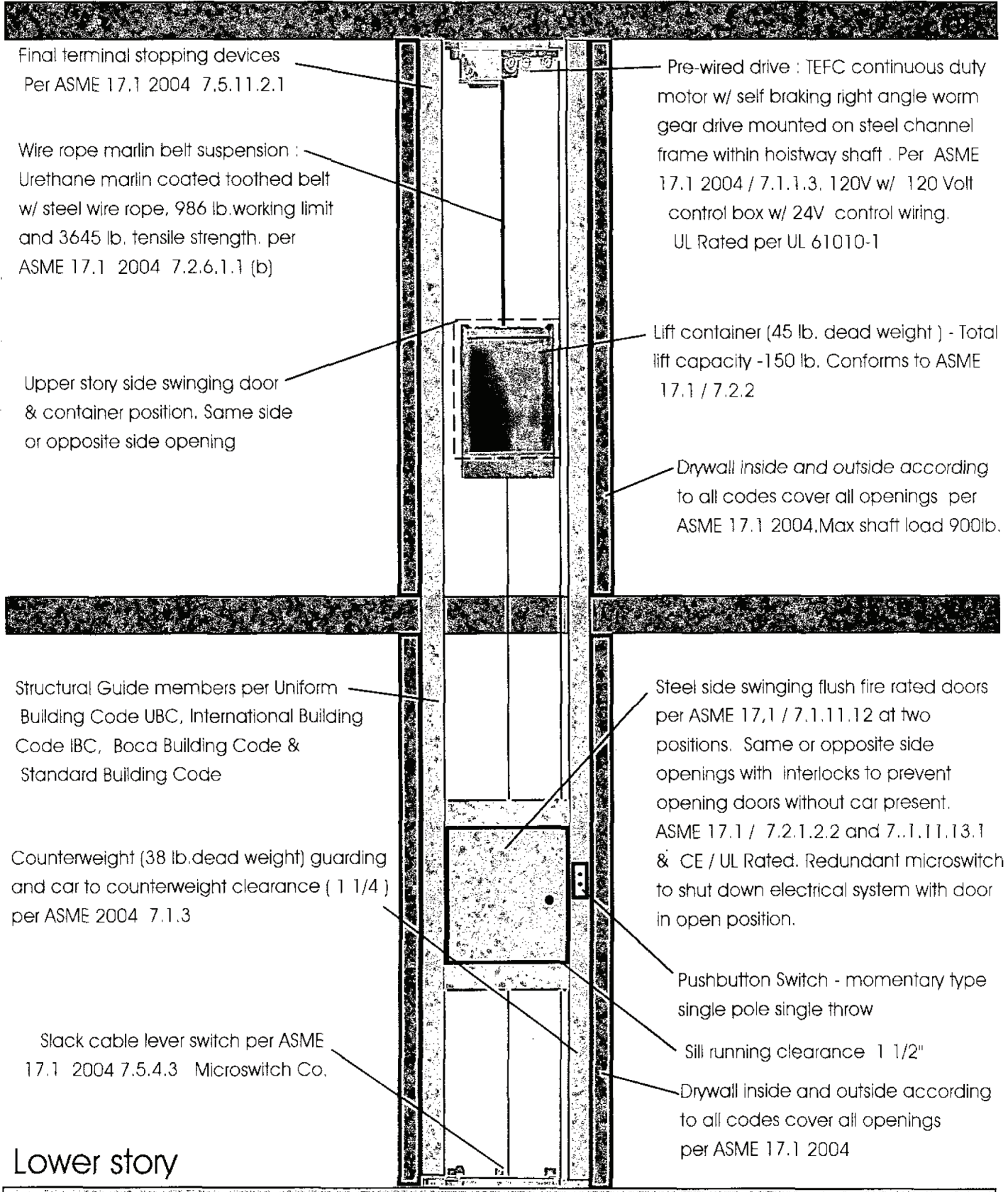
LOWER STORY

Lower story ceiling

REQUIRED DRYWALL

STEEL UL APPROVED "B" OR "C" LABEL DOORS WITH ELECTRO-MECHANICAL INTERLOCKS AT EACH STORY .

O



Final terminal stopping devices
Per ASME 17.1 2004 7.5.11.2.1

Wire rope marlin belt suspension :
Urethane marlin coated toothed belt
w/ steel wire rope, 986 lb. working limit
and 3645 lb. tensile strength. per
ASME 17.1 2004 7.2.6.1.1 (b)

Upper story side swinging door
& container position. Same side
or opposite side opening

Pre-wired drive : TEFC continuous duty
motor w/ self braking right angle worm
gear drive mounted on steel channel
frame within hoistway shaft . Per ASME
17.1 2004 / 7.1.1.3. 120V w/ 120 Volt
control box w/ 24V control wiring.
UL Rated per UL 61010-1

Lift container (45 lb. dead weight) - Total
lift capacity -150 lb. Conforms to ASME
17.1 / 7.2.2

Drywall inside and outside according
to all codes cover all openings per
ASME 17.1 2004. Max shaft load 900lb.

Structural Guide members per Uniform
Building Code UBC, International Building
Code IBC, Boca Building Code &
Standard Building Code

Steel side swinging flush fire rated doors
per ASME 17.1 / 7.1.11.12 at two
positions. Same or opposite side
openings with interlocks to prevent
opening doors without car present.
ASME 17.1 / 7.2.1.2.2 and 7.1.11.13.1
& CE / UL Rated. Redundant microswitch
to shut down electrical system with door
in open position.

Counterweight (38 lb. dead weight) guarding
and car to counterweight clearance (1 1/4)
per ASME 2004 7.1.3

Pushbutton Switch - momentary type
single pole single throw

Slack cable lever switch per ASME
17.1 2004 7.5.4.3 Microswitch Co.

Sill running clearance 1 1/2"

Drywall inside and outside according
to all codes cover all openings
per ASME 17.1 2004

Lower story

Patented & patents pending

Codes related to Dumb Waiters