



BARCELONA

GLAZED PORCELAIN

ALL WHITE | PORCELAIN | STONE | OCEAN
MONTJUIC | RAVAL | SARRIA | BORN | GUELL | SANTS





Barcelona | All White | Montjuic Decor | 6" x 6"

BARCELONA



**6" x 6" Barcelona
All White**
66BARAWT



**6" x 6" Barcelona
Porcelain**
66BARPOR



**6" x 6" Barcelona
Stone**
66BARSTO



**6" x 6" Barcelona
Ocean**
66BAROCN



**6" x 6" Barcelona
Montjuic Decor**
66BARJUI



**6" x 6" Barcelona
Raval Decor**
66BARRAV



**6" x 6" Barcelona
Sarria Decor**
66BARSAR



**6" x 6" Barcelona
Born Decor**
66BARBOR



**6" x 6" Barcelona
Guell Decor**
66BARGUE



**6" x 6" Barcelona
Sants Decor**
66BARSTS

Symbol Guide



Floor Tile



Wall Tile



Frost Resistant



Residential



Light Commercial



Commercial



PEI



Pressed Edge





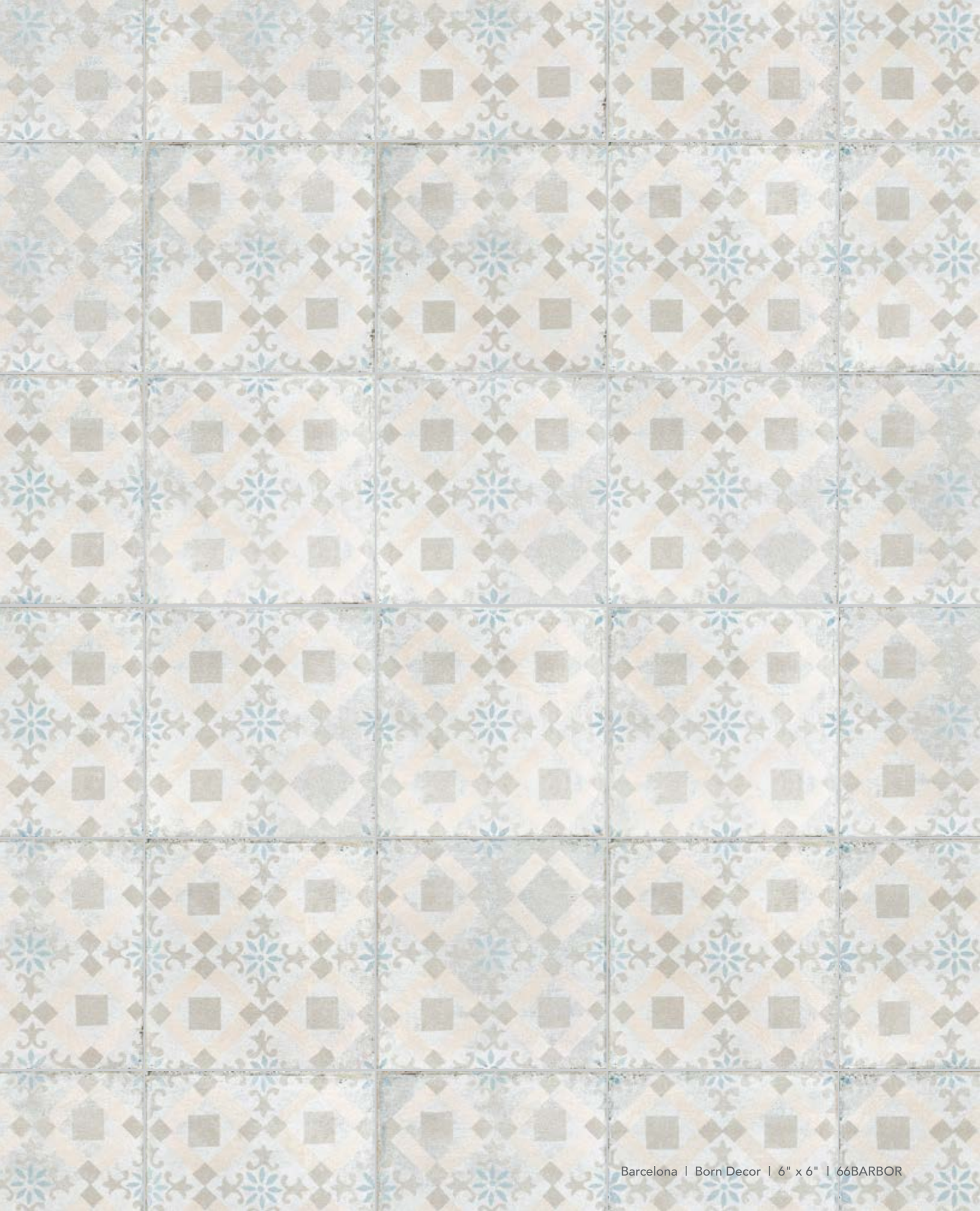
















BARCELONA SPECIFICATIONS

Product Specifications

	Barcelona Series: All White, Porcelain, Stone, Ocean, Montjuic Decor, Raval Decor, Sarria Decor, Sants Decor, Guell Decor, Born Decor	Technical Characteristics GRUP BIII ISO 13006 ANEX L / UNE-EN 14111 ANEX L	Test Standard
Dimensions	+0.6 mm	Length	ISO 10545-2
Thickness	9mm		ISO 10545-2
Surface Flatness	0.30%	Edge and Central Curvature	ISO 10545-2
Water Absorption	> 0.5%	Porcelain	ISO 10545-3
Scratch Hardness	3 Mohs	Mohs	EN-101
Crazing Resistance	Without cracks	Enamel cracks	ISO 10545-11
Chemical Resistance	GLA (No visible effect)		ISO 10545-13
Stain Resistance	5 (Remove using hot water)		ISO 10545-14
Strength Resistance	>35 N/mm ²	Modulus of Rupture	ISO 10545-4
Frost Resistance	Accomplish		ISO 10545-12
Abrasion Resistance	Class 4	PEI	ISO 10545-7
Slip Resistance	Class 2	Pendulum Test	ENV 12633
Slip Resistance	>36 PTV		BS 7976
Slip Resistance	R10		DIN 51130
Slip Resistance	>0.42		DIN 51130
Slip Resistance	Class B		DIN 51097

Installation Information

Before Installing	Please inspect all products before installation. A minimum of 2-3 boxes of tiles should be laid and checked. Before laying, check that the Batch Code is the same on the product labels of all the boxes. Claims will not be accepted after installation. Installation constitutes unconditional acceptance of merchandise.
Adhesive Type	Must be in accordance with ANSI A118.4 or better.

Commercial Usage

	Residential	Light Commercial	Commercial
All White	•	•	•
Porcelain	•	•	•
Stone	•	•	•
Ocean	•	•	•
Montjuic	•	•	•
Raval	•	•	•
Sarria	•	•	•
Sants	•	•	•
Guell	•	•	•
Born	•	•	•

Shade Variation



V2 Slight Variation

Barcelona Product Packaging

	Thickness	Box Qty.	Coverage/Box	Weight/Box	Boxes/Pallet	Coverage/Pallet	Weight/Pallet
6" x 6" Barcelona/Decor	9 mm	44 pieces	10.230000 Sf	39.59 lb	75	767.250000 Sf	2,969.26 lb

Barcelona All White - 66BARAWT Barcelona Porcelain - 66BARPOR Barcelona Stone - 66BARSTO
 Barcelona Ocean - 66BAROCN Barcelona Montjuic Decor - 66BARJUI Barcelona Raval Decor - 66BARRAV
 Barcelona Sarria Decor - 66BARSAR Barcelona Sants Decor - 66BARSTS Barcelona Guell Decor - 66BARGUE
 Barcelona Born Decor - 66BARBOR