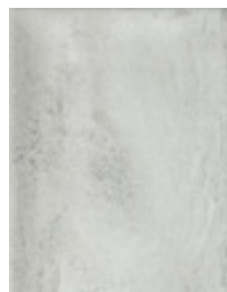




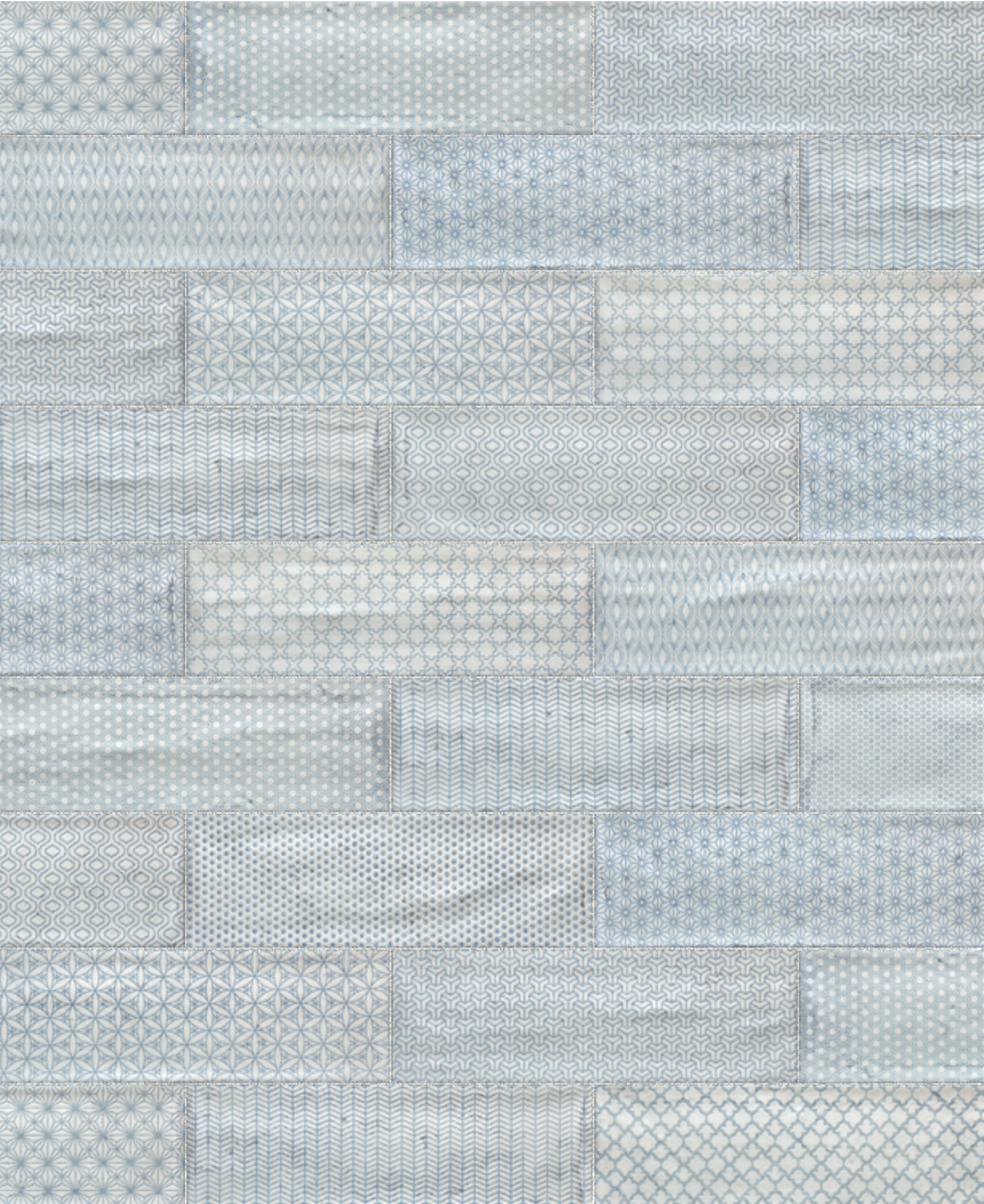
ARLES

DECORATIVE WALL TILES

SNOW | SEA | SILVER | NICKEL | CREAM | FOREST



4"x 12" Arles Snow Decor Mix
412ARLSOD



4" x 12" Arles Snow
412ARLSNW



4" x 12" Arles Sea
412ARLSEA



4" x 12" Arles Silver Decor Mix

412ARLSID



4"x 12" Arles Silver

412ARLSIL

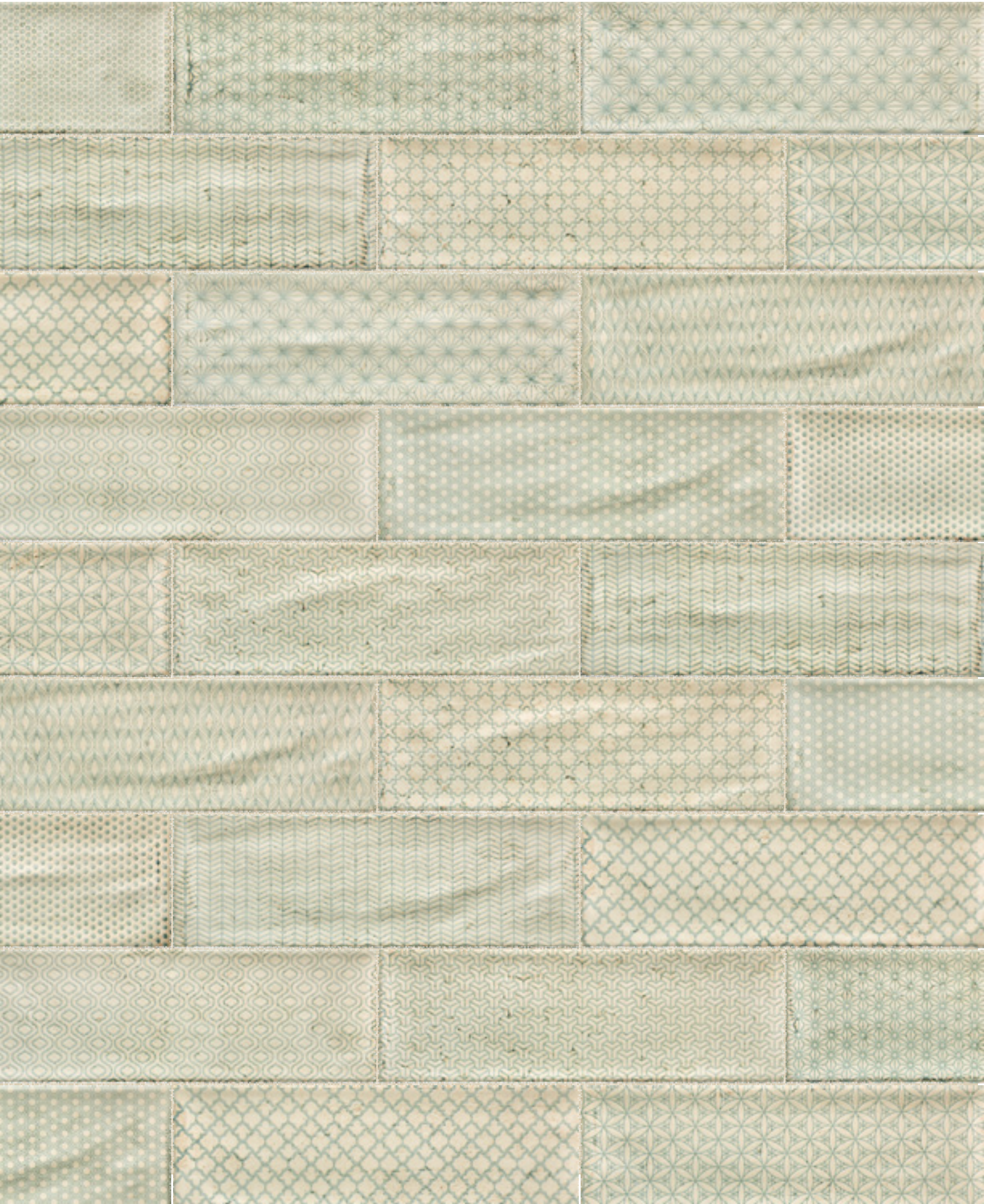


4"x 12" Arles Nickel

412ARLNKL



4" x 12" Arles Cream Decor Mix
412ARLCRD



4"x 12" Arles Cream
412ARLCRE



4"x 12" Arles Forest
412ARLFOR





ARLES SPECIFICATIONS

Product Packaging

	Thickness	Box Qty.	Coverage/Box	Weight/Box	Boxes/Pallet	Coverage/Pallet	Weight/Pallet
4" x 12" Arles Snow	7.6 mm	40 pieces	12.9167 Sf	33.20 lb	72	930.240 Sf	2,390.72 lb
4" x 12" Arles Snow Decor Mix	7.6 mm	40 pieces	12.9167 Sf	32.95 lb	72	930.240 Sf	2,372.11 lb
4" x 12" Arles Sea	7.6 mm	40 pieces	12.9167 Sf	33.59 lb	72	930.240 Sf	2,418.62 lb
4" x 12" Arles Silver	7.6 mm	40 pieces	12.9167 Sf	33.98 lb	72	930.240 Sf	2,446.53 lb
4" x 12" Arles Silver Decor Mix	7.6 mm	40 pieces	12.9167 Sf	32.95 lb	72	930.240 Sf	2,372.11 lb
4" x 12" Arles Nickel	7.6 mm	40 pieces	12.9167 Sf	32.82 lb	72	930.240 Sf	2,362.81 lb
4" x 12" Arles Cream	7.6 mm	40 pieces	12.9167 Sf	32.95 lb	72	930.240 Sf	2,372.11 lb
4" x 12" Arles Cream Decor Mix	7.6 mm	40 pieces	12.9167 Sf	34.37 lb	72	930.240 Sf	2,474.44 lb
4" x 12" Arles Forest	7.6 mm	40 pieces	12.9167 Sf	34.11 lb	72	930.240 Sf	2,455.83 lb

Product Specifications

	Arles Series: Snow, Sea, Silver, Nickel, Cream, Forest, Snow Decor Mix, Silver Decor Mix, Cream Decor Mix	Technical Characteristics GRUP BIII ISO 13006 ANEX L / UNE-EN 14111 ANEX L	Test Standard
Maximum Deviation from Work Size (%)	L: 0.00/0.07 W: 0.10/0.30		ISO 10545-2
Maximum Deviation from Work Size Thickness (mm)	1.33/5.33		ISO 10545-2
Maximum Deviation from Straightness of Sides (%)	L: -0.07/0.13 W: 0.00/0.10		ISO 10545-2
Maximum Deviation from Rectangularity (%)	L: -0.27/0.30 W: -0.30/0.20		ISO 10545-2
Maximum Deviation from Edge Curvature (%)	L: 0.17/0.30 W: -0.30/0.00		ISO 10545-2
Maximum Deviation from Center Curvature (%)	0.03/0.19		ISO 10545-2
Maximum Deviation from Warpage (%)	-0.06/0.06		ISO 10545-2
Surface Quality. % of tiles w/o defect	100%	As indicated by the manufacturer	ISO 10545-2
Water Absorption	Average 14.5%	Maximum 14.8%	ISO 10545-3
Modulus of Rupture	Average 25 N/mm ²	Min. 23 N/mm ²	ISO 10545-4
Crazing Resistance	Resistant	Required	ISO 10545-11
Resistance to Household Chemicals	GA	Min. Class B	ISO 10545-13
Resistance to Acids and Alkalis	GLA	As indicated by the manufacturer	ISO 10545-13
Stain Resistance	5	Min. Class 3	ISO 10545-14
Scratch Hardness	4 Mohs	Min. 3 Mohs	EN 101: 1991

Installation Information

Before Installing	Please inspect all products before installation. A minimum of 2-3 boxes of tiles should be laid and checked. Before laying, check that the Batch Code is the same on the product labels of all the boxes. Claims will not be accepted after installation. Installation constitutes unconditional acceptance of merchandise.
Adhesive Type	Must be in accordance with ANSI A118.4 or better.

Disclaimer:

These tiles have a random distribution of unique faces within each box. Distribution of faces will even out over several boxes. No guarantees are made about the number of unique faces per box. This material is sold by the box only. Only unopened returns will be accepted for this material.