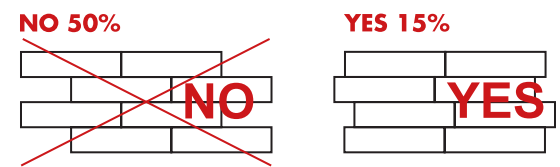




FRENCH QUARTER				
Technical Specifications	Reference Standard	Standard Requirements	Teste Results	
Water Absorption	UNI EN ISO 10545-03	<0.5%	< 0.2%	
Breaking Strength	UNI EN ISO 10545-04	Minimum: 1300 N	≥ 1400 N	
Modulus of Rupture	UNI EN ISO 10545-04	Minimum: 35 N/mm <sup>2</sup>	≥ 37 N/mm <sup>2</sup>	
Shock Resistance	UNI EN ISO 10545-05	Suggested Minimum: e > 0.55	Complies	
Resistance to Deep Abrasion	UNI EN ISO 10545-06	Maximum: 175 mm <sup>3</sup>	Not Applicable	
Thermal Linear Expansion	UNI EN ISO 10545-08	Minimum for Floor Applications: Classe 3	Complies	
Thermal Shock Resistance	UNI EN ISO 10545-09	Resistant	Resistant	
Moisture Expansion	UNI EN ISO 10545-10	As Reported	< 0.06%	
Frost Resistance	UNI EN ISO 10545-12	As Reported	Resistant	
Chemical Resistance	UNI EN ISO 10545-13	Domestic Chemical Products: UB / GB	GA	
		Acids and Alkalis: As Reported	GLA	
Stain Resistance	UNI EN ISO 10545-14	Minimum: Classe 3	Class 5	
PEI Rating (Scratch Resistance)	ASTM C 1027	As Reported	Orleans <b>IV</b>	
			Chartres <b>V</b>	
			Bienville <b>IV</b>	
			Toulouse <b>IV</b>	
DCOF	Dynamic Coefficient of Friction (DCOF)	ANSI A137.1	For level Interior Spaces Expected to be Walked Upon When Wet : > 0.42	> 0.44
V4	Shade Variation	Not Available	As Reported	V4
	Thickness	Not Available	As Reported	8 mm
	Number of Screens	Not Available	As Reported	24 (12"×24")

**GROUP JOINT REQUIRED FOR RECTIFIED EDGE TILE**  
1/2 BROKEN JOINT NOT RECOMMENDED



**HAPPY FLOORS**

I-Design Collection  
www.Happy-Floors.com



# FRENCH QUARTER

## Porcelain



ORLEANS



12"×24"



3"×10" Brick



3"×12" Bullnose



2"×2" Mosaic  
12"×12" Sheet



ORLEANS

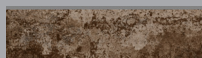
TOULOUSE



12"×24"



3"×10" Brick



3"×12" Bullnose

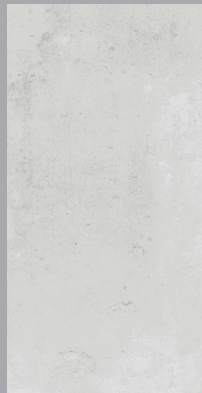


2"×2" Mosaic  
12"×12" Sheet

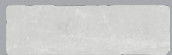


CHARTRES & TOULOUSE

CHARTRES



12"×24"



3"×10" Brick



3"×12" Bullnose



2"×2" Mosaic  
12"×12" Sheet

BIENVILLE



12"×24"



3"×10" Brick



3"×12" Bullnose



2"×2" Mosaic  
12"×12" Sheet



BIENVILLE