

# COLOR APPEAL™

GLASS WALL TILE AND GLASS, GLASS & STONE MOSAICS

WALL



AMERICAN OLEAN®  
PROVEN IN TILE™

AMERICANOLEAN.COM

# COLOR APPEAL™

Color Appeal revisits glass with updated colors, fresh sizes, and on-trend stone and glass blends. Color Appeal offers a sophisticated range of both cool and warm neutrals as well as a new vivid color group designed to add 'pop' to the color palette. Marbles and travertine are combined in harmonic blends with the neutral glass shades that perfectly complement each of the stone selections.



Photo features Color Appeal Willow Brook Blend 1 x 1 mosaic and Plaza Taupe 4 x 12 on the wall.

# COLOR APPEAL™

GLASS WALL TILE AND GLASS, GLASS & STONE MOSAICS

## GLASS WALL TILE SOLIDS



PEARL  
C101



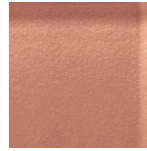
CLOUDBURST  
C120



SILVER  
CLOUD C102



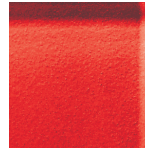
ORCHID  
C118



BRANDIED  
MELON C115



AUBURN  
C116



CHERRY  
C117



ORANGE  
PEEL C126



VIBRANT  
YELLOW C123



VINTAGE  
MINT C107



CELEDON  
C112



POWDER  
C109



FOUNTAIN  
BLUE C108



GRASSHOPPER  
C111



DUSK  
C110



HAWAIIAN  
OCEAN C125



PLUM  
C127



LIME GREEN  
C124



MOONLIGHT  
C106



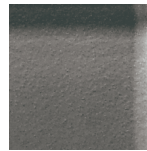
CLOUD  
CREAM C104



OXFORD TAN  
C103



PLAZA TAUPE  
C105



MINK  
C119



CHARCOAL  
GRAY C121



SABLE  
C113

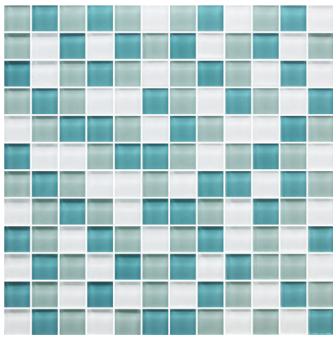


COPPER  
BROWN C114

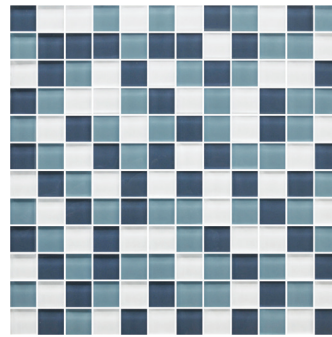


SLATE  
C122

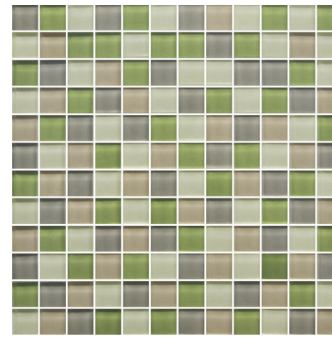
## 1 x 1 GLASS MOSAIC BLENDS



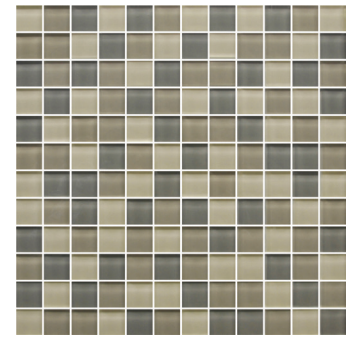
SEA PEARL BLEND C128



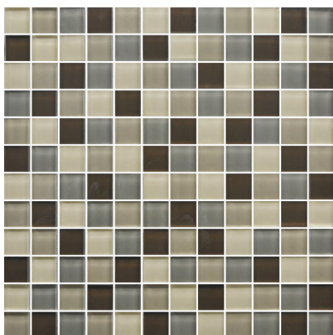
BLUE MOON BLEND C130



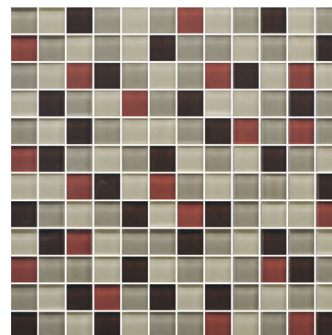
WILLOW BROOK BLEND C129



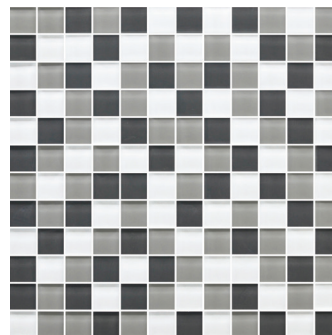
SAND STORM BLEND C133



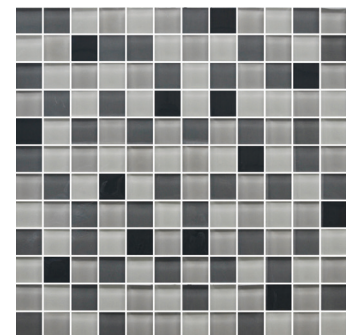
PECAN GROVE BLEND C132



EARTH FIRE BLEND C131



SILVER SPRING BLEND C134



MIDNIGHT SKY BLEND C135



Photo features Color Appeal™ Sea Cliff Blend 3 x Random mosaic on the wall.

# COLOR APPEAL™

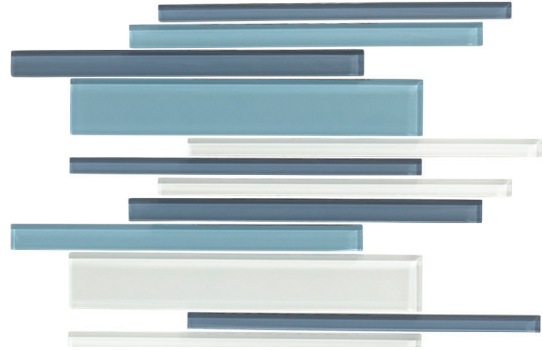
GLASS WALL TILE AND GLASS, GLASS & STONE MOSAICS

## GLASS RANDOM INTERLOCKING MOSAIC BLENDS

---



SEA PEARL BLEND C128



BLUE MOON BLEND C130



WILLOW BROOK BLEND C129



SAND STORM BLEND C133



PECAN GROVE BLEND C132



EARTH FIRE BLEND C131



SILVER SPRING BLEND C134



MIDNIGHT SKY BLEND C135

# COLOR APPEAL™

GLASS WALL TILE AND GLASS, GLASS & STONE MOSAICS

## 3 x RANDOM GLASS & NATURAL STONE MOSAIC BLENDS

---



PACIFIC COAST BLEND C136



SEA CLIFF BLEND C141



MOUNTAIN MORNING BLEND C140



PEBBLE BEACH BLEND C137



CANYON TRAIL BLEND C138



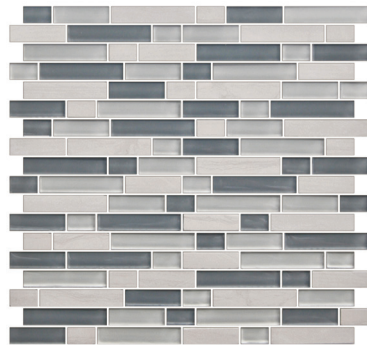
TORTOISE SHELL BLEND C139

## 5/8 x RANDOM GLASS & NATURAL STONE MOSAIC BLENDS

---



PACIFIC COAST BLEND C136



SEA CLIFF BLEND C141



MOUNTAIN MORNING BLEND C140



PEBBLE BEACH BLEND C137



CANYON TRAIL BLEND C138




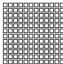


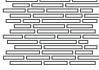


TORTOISE SHELL BLEND C139

# COLOR APPEAL™

GLASS WALL TILE AND GLASS, GLASS & STONE MOSAICS

## SIZES

			THICKNESS	SQ. FT./ CARTON	PIECES/ CARTON
	4 x 12 Wall Tile	3-7/8" x 11-3/4" (9.80 cm x 29.80 cm)	5/16"	6.60	20
	2 x 8 Wall Tile	1-7/8" x 7-7/8" (4.80 cm x 19.80 cm)	5/16"	6.60	60
	3 x 6 Wall Tile	2-7/8" x 5-7/8" (7.30 cm x 14.80 cm)	5/16"	4.00	32
	1 x 1 Glass Mosaic ■	11-3/4" x 11-3/4" Sheet (29.80 cm x 29.80 cm Sheet)	5/16"	10.00	10
	Glass Random Interlocking Mosaic ■ ◇	12" x 18" Sheet (30.48 cm x 45.72 cm Sheet)	5/16"	10.00	10
	3 x Random Glass & Stone Mosaic ■	12-3/4" x 11-3/4" Sheet (32.39 cm x 29.80 cm Sheet)	5/16"	9.50	10
	5/8 x Random Glass & Stone Mosaic ■	11-3/4" x 12-1/2" Sheet (29.80 cm x 31.75 cm Sheet)	5/16"	10.00	10

■ Mesh-mounted ◇ Available in blends only

## INSTALLATION & PRICING

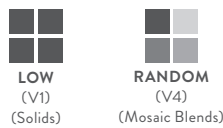
### RECOMMENDED GROUT JOINT:

Wall: 1/8"

Mosaic: 1/8"

RELATIVE PRICING: Medium to High

### SHADE VARIATION



## PERFORMANCE CHARACTERISTICS

	ASTM#	WALL RESULT	MOSAIC RESULT*
Water Absorption	C373	< 0.5%	< 0.5%
Breaking Strength	C648	> 100 lbs.	> 100 lbs.
Scratch Hardness	MOHS	4.0	4.0
Chemical Resistance	C650	Resistant	Resistant
Abrasion Resistance	C1027	N/A	N/A

\* Test results are for glass tile only.

For additional information on test results, visit us at: [americanolean.com/information/TestResults](http://americanolean.com/information/TestResults).

## USAGE

FLOORS	WALLS	COUNTERTOPS
	W	

## APPLICATIONS

	TARGET DCOF WET	SUITABLE
Dry & Level – Interior Floor	N/A	
Wet & Level – Interior Floor	≥ 0.42	
Shower Floors (Residential or Light Commercial)	≥ 0.42	
Exterior Floor Applications (including pool decking & other wet areas with minimal footwear)	≥ 0.60	
Ramps & Inclines	≥ 0.65	
Walls/Backsplashes	N/A	●
Countertops	N/A	
Pool Linings	N/A	●*

A DCOF value of ≥0.42 is the standard for tiles specified for level interior spaces expected to be walked upon when wet, as stated in ANSI A137.1-2012, Section 9.6. For more information about DCOF and the DCOF AcuTest™, visit [americanolean.com/DCOF](http://americanolean.com/DCOF).

### APPLICATION NOTES:

Suitable for exterior applications in freezing and non-freezing climates, when proper installation methods are followed.

\* Glass & Stone blends are not recommended for pool use. C117 Cherry and C125 Hawaiian Ocean are not recommended for exterior use.

## NOTES

For additional information refer to "Factors to Consider" at: [americanolean.com/Factors](http://americanolean.com/Factors).

Random visuals enhance the natural beauty of this product. To achieve optimal results, all tile should be selected from multiple cartons and shading and graphic arrangement planned prior to installation.

Since there are variations in all glass products, tile and trim supplied for your particular installation may not match samples. Final confirmation should be made from actual tiles and trim prior to installation. Manufactured in accordance with ANSI A137.2 standards.

Use of a white latex modified thin-set is recommended for installation.

Stone is sealed at the factory and should be resealed as part of normal maintenance.



Naturally, many of our products can help you earn LEED™ credits.

888.AOT.TILE

©2017 AMERICAN OLEAN (12/17)



AMERICAN OLEAN®  
PROVEN IN TILE™