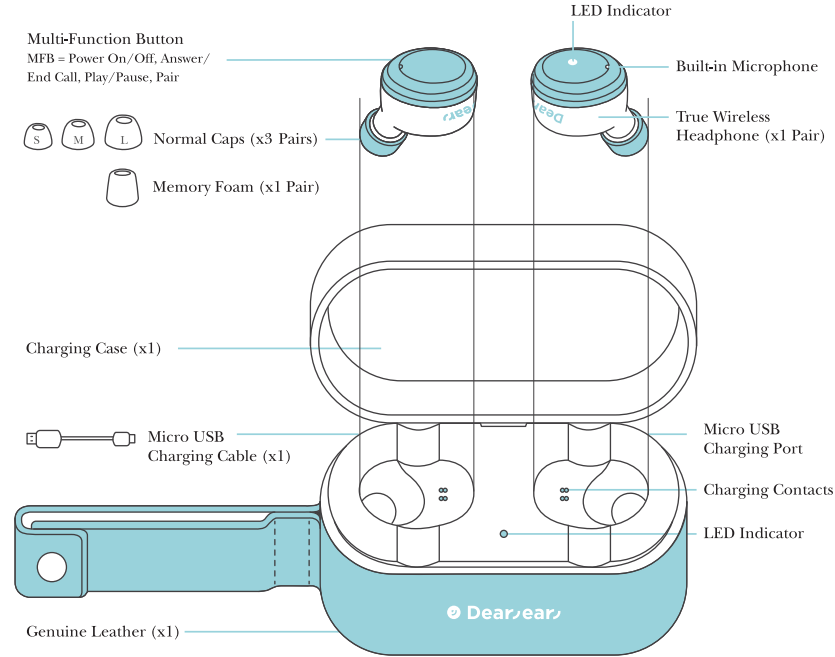


OVAL

In-Ear True Wireless Headphones

DE-TW02
V18-1A



Specs True Wireless Headphones:

Bluetooth specification: V4.2
Frequency response: 20Hz-20KHz
Supported profile: A2DP, AVRCP, HFP, HSP
Operation range: Up to 10 meters
Earphone driver unit: diameter 6mm
SN Ratio: >70dB
Sensitivity: 91dB±3dB
Oval Weight: 5g(each side)
Impedance: 16ohm
Play time: 5-6 hours at 40% Volume
(varies on phone models)

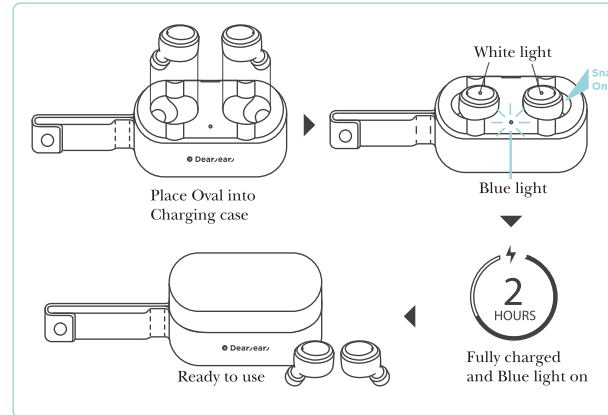
Charge Case:

Backup Battery: 500mAh
Charge time: 2 hours
Battery Capacity: 45mAh (each side)

Safety And General Information

- 1) Please read this User's Manual carefully and follow all instructions.
- 2) To avoid any damage or malfunction of the device do not drop the device from high places.
- 3) Keep device away from humidity, water and any other liquid. If the device is exposed to water, moisture and other liquids do not operate it to avoid any electrical shock, explosion and damage to the device or yourself
- 4) Do not place or keep this device near any heat sources, such as, direct sunlight, radiators, stoves or other apparatus that produce heat. This may cause an explosion, degrade the performance and/or reduce battery life.
- 5) Do not modify, repair or disassemble device (Especially the battery). Doing this will void the warranty.
- 6) Do not place heavy objects on the device.
- 7) Use only the supplied and approved chargers.
- 8) Unplug this device when unused for long periods of time or during lightning storms.
- 9) The battery used in this device may present a risk of fire or chemical burn if mistreated.
- 10) For optimal audio performance, please choose the correct size tip that gives you the best comfort and fit in each ear.

Charging the Headphones



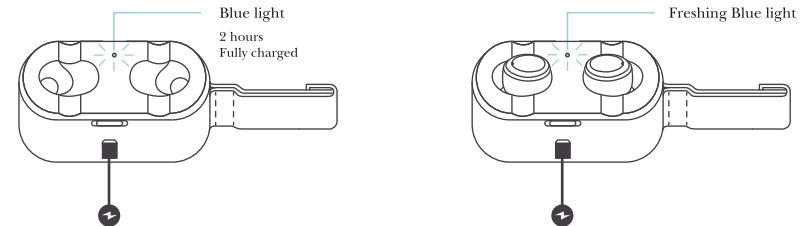
Battery Information

The device is equipped with integrated lithium-polymer battery. The battery cannot be replaced. Do not attempt to remove the battery from the device since it would damage the device. The full performance of a new battery is not achieved until after two or three complete charging-discharging cycles. The battery can be charged and discharged several hundred times, but it loses its capacity over time.

IMPORTANT:

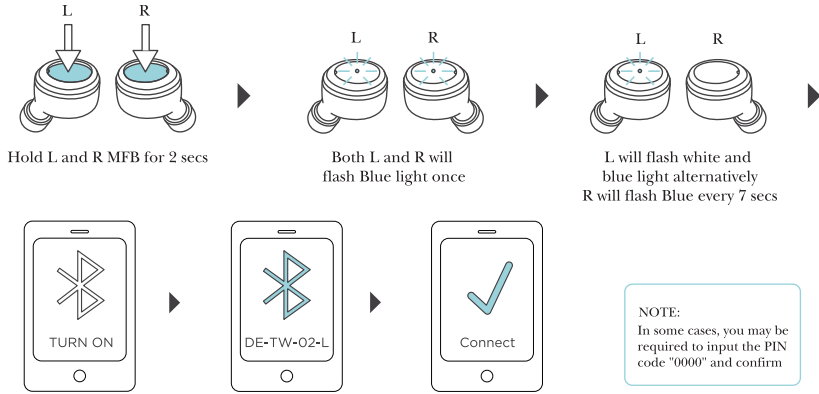
Ensure that the battery is fully charged if you do not use the device for a long period of time. To avoid a complete discharge of the battery, the device should be charged at least every 6 months.

Charging the Case



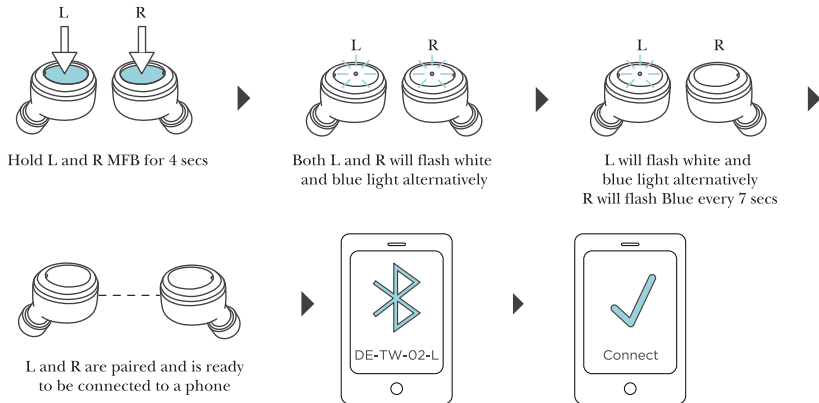
NOTE:
When using Oval with iPhone, an additional battery meter will be activated and the remaining battery capacity will be displayed on your iPhone.

Connecting to Bluetooth® Phone

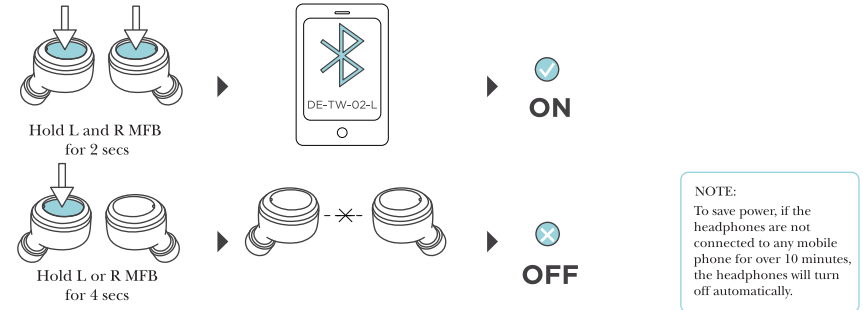


Pairing L and R Headphones

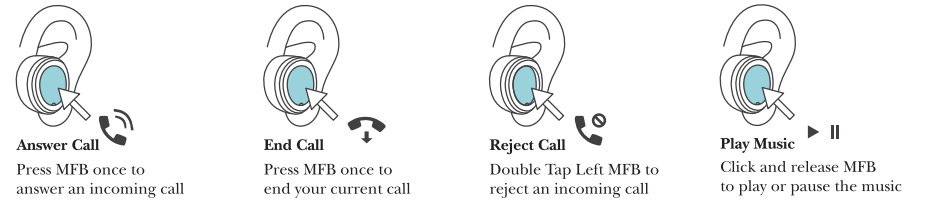
L and R are by default already paired by the factory. Use this as a reset



Turning On + Off Please ensure the phone's Bluetooth® function is active.



Using for Phone call & Music Play



Using for Ambience Aware & Voice Command

