

Whiteboard In A Box

Installation Instructions



This takes two people, one to hold the Whiteboard In A Box so it won't stick together, while the other person smooth's it and pushes out the air.



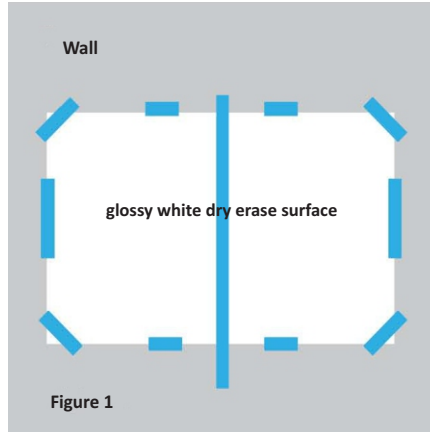
Product temperature is important. During extreme temperatures (cold) allow the adhesive of the Whiteboard In A Box to acclimate to room temp. before applying (24 hours).



Prior to applying, make sure that freshly painted walls have been allowed to cure a minimum of 30 days. (check with paint manufacturing specs)

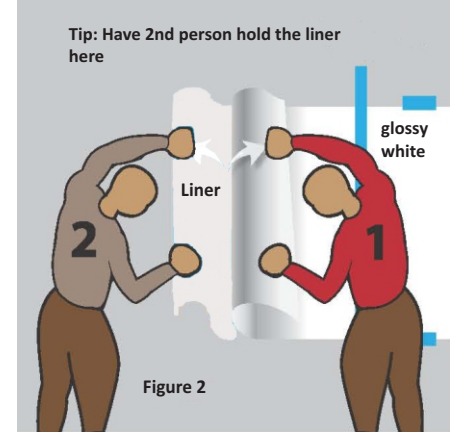
Step 1:

Apply to clean, smooth surface, unroll Whiteboard In A Box. Position Whiteboard In A Box on the wall, use penciled guidelines on your wall for placement. Tape all four corners to the wall with removable tape, such as blue painter's tape. Find the center and apply tape down the center. (Fig1)



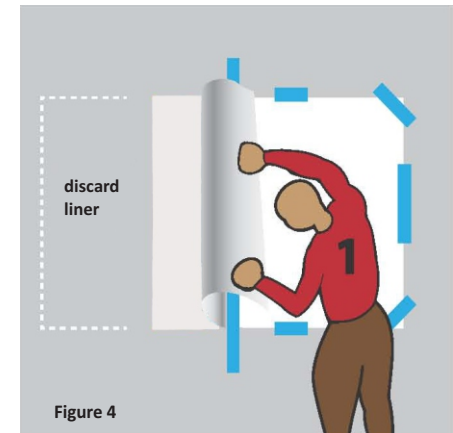
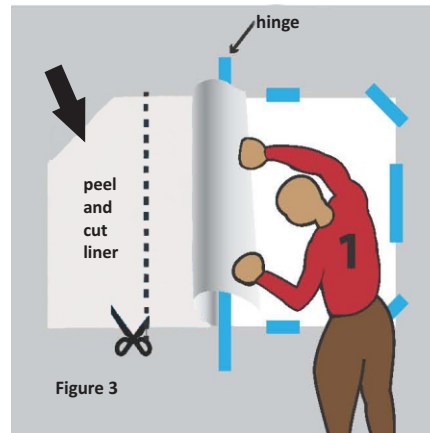
Step 2:

Remove blue tape from the left top, bottom and corners. Person #1 holds the whiteboard away from the wall while Person #2 peels the off white liner away from the whiteboard. (do not allow the whiteboard to come in contact with itself) (Fig 2) Keep the whiteboard as perpendicular as possible and peel apart in a steady even motion. Person #2 cuts the liner near the hinge and discards while Person #1 continues to hold whiteboard straight. (Fig 3) and (Fig 4).



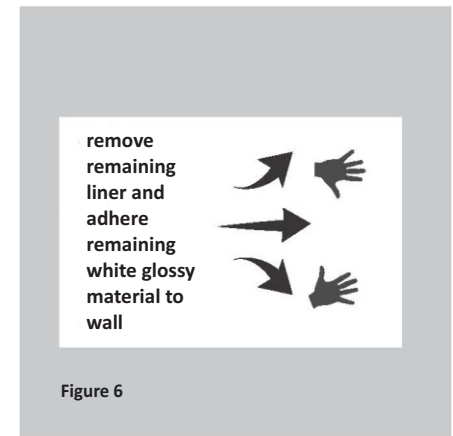
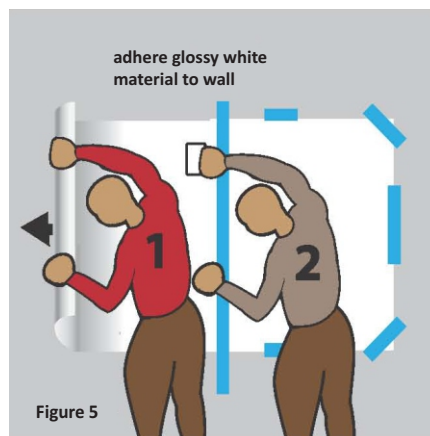
Step 3:

Person #1 continues to hold whiteboard while Person #2 starts smoothing with a squeegee, credit card or soft cloth from the center tape to the left applying even, medium pressure making sure air bubbles are being smoothed out as you work. It's best to work in small increments (18" sections). Maintain your patience in this step, work slow and smooth. (Fig 5).



Step 4:

Carefully remove center blue tape and remaining tape as Person #1 holds the whiteboard away from the wall while Person #2 peels the liner away from the whiteboard. (do not allow whiteboard to come in contact with itself). (Fig 2) Keep the whiteboard as perpendicular as possible and peel apart in a steady even motion. Person #2 starts smoothing with a squeegee, credit card or soft cloth from the center to the right applying even, medium pressure making sure air bubbles are smoothed out as you work. It's best to work in small increments (18" sections). Maintain your patience in this step, work slow and smooth. (Fig 6)



Now step back . . . Uleash your creativity and **Write with ATTITUDE!**