

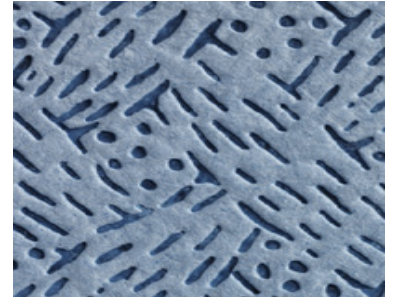


Exceptional Workplaces

Product Data Sheet for KIMTECH* Process Wipers - 1/4 Fold / Blue - 7622

Product Information

Product Long Code 07622000
Customer Facing Code 7622
Description KIMTECH* Process Wipers - 1/4 Fold / Blue
PDS Reference 28/01/2017



Packaging Configuration

Case Contents 12 Bags x 35 Sheets = 420 Sheets
Outer Pack Material Paper
Commodity Code 56031390



Icon	Dimension	Weight(kg)
	38.10 x 49.00	Length x Width(cm)

Product Description

A range of reliable, high-performance wipers, each suited to a specific task in controlled areas like transport, healthcare and manufacturing.

Ideal for: repeat-use cleaning with chemicals and solvents, without leaving lint.

Available as: quarter folded wipers, wrapped in a splash-proof, water-repellent polybag, giving you immediate access to hygienically protected wipers in your work area.

Product Specifications

Fold Type	1/4	Impregnated	No
Bar Code (Case)	05027375018886	Bar Code (Pack)	5033848004294
Virgin Fibre(%)	100	Technology	Meltblown
Colour	Blue		

Product Data Sheet for KIMTECH* Process Wipers - 1/4 Fold / Blue - 7622

International Standards and Symbols

Marketing

Technology – Speciality Wiper

WYPALL*/ KIMTECH PURE Cleaning Wipes



Solution

Safer Workplace

We know staff safety is your top priority. You can rely on our solutions to protect them, their environment and your important work.



Productive Workplace

The success of your business hinges on your work efficiency. That's why our solutions are designed to help improve your productivity.



Packaging

Unit Of Sale	Case	Net Weight(kg)	6.804
Max Weight(kg)	8.43	Case Dimension (LXWXH)(cm)	52.3 x 40.2 x 29.6
Inner Pack Material	Plastic		

Pallet Type	LxWxH (m)	Cases per Layer	Layers per Pallet	Cases per Pallet
A2	1.20 x 1.00 x 1.33	6	4	24

Information

It is the employer's responsibility to assess the risk of the task to be undertaken and determine the correct choice of wipers for the task. The manufacturer, Kimberly-Clark, does not accept any responsibility for the incorrect choice or misuse of wipers shown in this brochure. All care has been taken to ensure that the information contained herein is as accurate as possible at the time of publication, however errors may occur and legislation concerning personal protective equipment is under constant review and may change in the lifetime of this brochure. Accordingly, the specifications for the products may be subject to change. We would advise you to contact INFOFAX if you have any queries concerning the products shown or the suitability of such products for the particular task. Always dispose of used protective equipment in a safe and appropriate manner in accordance with European, National and Local environmental regulations

Infofax Details	infofax@kcc.com	Websites	www.kcprofessional.co.uk
Customer Service Number	For more information please contact Customer Service during regular office hours-0870 551 044		
Country of Origin	UNITED KINGDOM		