

NEXX™

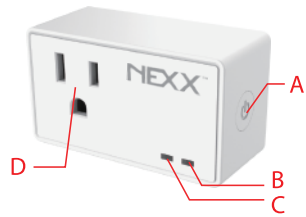
Smart Plug



Thank you for supporting Nexx!

We hope that you ❤️ our products as much as we do. We look forward to reading your awesome 5-star review.

As always, we are here to support you before, during and after your purchase. Just go to www.getnexx.com for support or to check out our other smart products.



A: On/Off/Reset Button. Press and release to turn the device on/off.

To reset the device press and hold until the **Blue Light** is steady. This typically takes about 10 seconds.

B: Blue Light.

a. Direct Connect: Blue Light is steady on. "Direct Connect" mode allows your phone to directly communicate with the device. You will need to change your phone's Wi-Fi network to "NexxPlug-xxxxxx".

b. Registered: Blue Light is off. "Registered" mode allows your phone or third-party devices, like Amazon Alexa or Google Assistant, to control Nexx Plug.

C: Red Light. When the **Red Light is on** the outlet output is active. If the **Red Light is off** then electricity output is off.

D: Power Plug. AC100~240V 50/60Hz.

Setup

Step 1: Install Nexx Home App

From Apple App store or Google Play store, install "Nexx Home" app or use the QR code below:

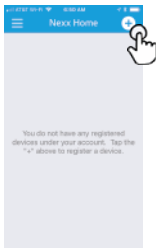
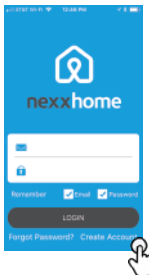


Step 2: Create Nexx Home Account

From login screen tap "Create Account".

Step 3: Register Nexx Plug

Login and tap the "+" icon, then select Nexx Plug.



Step 4: Follow the Registration Screens

Setup Third-Party Apps

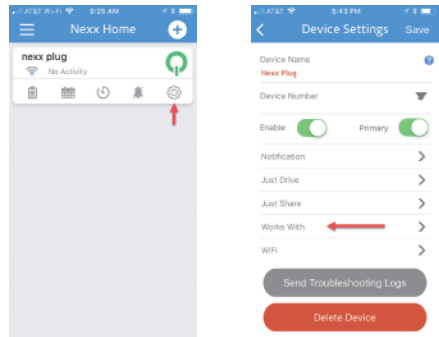
Nexx Plug works with:

- Amazon Alexa
- Google Assistant
- Samsung SmartThings
- More to Come



To setup third-party apps from the Nexx Home mobile app, tap the settings icon. Then choose "Works With" and select the third-party app.

Follow the setup instructions.



Nexx Home → Settings → Works With → Choose Third-Party App → Follow Instructions

Reset Device

Resetting the device will put it back to factory default and in "Direct Connect" mode.

Step 1:

Press and hold the on/off button until the **Blue Light** is steady on.



Product Specifications

WARNING: The Max power of this product is 1250W. It's strictly prohibited to use beyond this rating.

Voltage: AC 100V~240V 50/60Hz

Max. load current: 10A

Wireless standard: 802.11 b/g/n

Supported WiFi: 2.4 GHz

Operating temperature: 0°C ~ 45°C

Operating humidity: ≤80%

Troubleshooting

Make sure the device is powered on.
Phone should be connected to your Wi-Fi network.
Device should be in "Direct Connect" mode.
Steady **Blue Light** should be visible.

Wi-Fi network must be 2.4Ghz. A 5G network will not work.

Make sure the Wi-Fi network name and password is correct.

Ensure Nexx Plug is close to your router.

Support

For more detailed installation instructions, video tutorials, FAQs, and more, please visit our website:

www.getnexx.com

We are available 7 days a week if you need any assistance. Just send us an email:

support@getnexx.com

If you would like to speak to someone, please send us an email and provide us with your name and contact information where our tech agents can reach you.

Follow us on social media:

