

WARNING

FCC WARNING: This equipment may generate or use radio frequency energy. Changes or modifications to this equipment may cause harmful interference unless the modifications are expressly approved in the instruction manual. The user could lose the authority to operate this equipment if an unauthorized change or modification is made. This device complies with part 15 of the FCC Rules. Operation is subject to the following two conditions: (1) This device may not cause harmful interference, and (2) this device must accept any interference received, including interference that may cause undesired operation.

This equipment complies with FCC radiation exposure limits set forth for an uncontrolled environment. This equipment should be installed and operated with minimum distance of 20 cm between the radiator and your body.

NOTE: This equipment has been tested and found to comply with the limits for a Class B digital device, pursuant to part 15 of the FCC Rules. These limits are designed to provide reasonable protection against harmful interference in a residential installation. This equipment generates, uses and can radiate radio frequency energy and, if not installed and used in accordance with the instructions, may cause harmful interference to radio communications. However, there is no guarantee that interference will not occur in a particular installation. If this equipment does cause harmful interference to radio or television reception, which can be determined by turning the equipment off and on, the user is encouraged to try to correct the interference by one or more of the following measures:

- Reorient or relocate the receiving antenna.
- Increase the separation between the equipment and receiver.
- Connect the equipment into an outlet on a circuit different from that to which the receiver is connected.
- Consult the dealer or an experienced radio/TV technician for help.
- The rating information is located at the bottom of the unit.

INDUSTRY CANADA NOTICE:

This device complies with Industry Canada license-exempt RSS standard(s).

Operation is subject to the following two conditions:

1. This device may not cause interference, and
2. This device must accept any interference, including interference that may cause undesired operation of the device.

Le présent appareil est conforme aux CNR d'Industrie Canada applicables aux appareils radio exempts de licence. L'exploitation est autorisée aux deux conditions suivantes:

- (1) l'appareil ne doit pas produire de brouillage, et
- (2) l'utilisateur de l'appareil doit accepter tout brouillage radioélectrique subi, même si le brouillage est susceptible d'en compromettre le fonctionnement.

CAN ICES-3(B)/NMB-3(B)

PRODUCT LIMITED WARRANTY

Simpaltek, LLC warrants to the first retail purchaser of this product that it is free from defects in materials and/or workmanship for a period of one (1) year following the original purchase date of the product, provided the product is used 1) in a home environment protected from the elements and 2) in compliance with the instructions regarding installation, operation, maintenance, and testing. This limited warranty does not cover 1) normal wear and tear 2) failures due to a) improper installation, operation, care, and maintenance b) misuse/unintended use c) abuse, negligence d) accidental damage e) unauthorized repairs or alteration f) use of improper voltage g) electrical outage short circuit 3) consumable parts such as batteries 4) acts of nature.

For products returned for warranty which are confirmed to be defective and are covered by this limited warranty, we will replace or repair the product at no extra cost to you. Products may be repaired or replaced by refurbished parts or units or by different models of similar functionality at our sole discretion. We will not cover any product installation costs or any labor costs associated with other manufacturers' products or any repair or replacement or damage costs related to other products and services.

Any warranty claim must be accompanied by the first retail proof of purchase receipt showing the original first date of purchase, which is used to determine the warranty period.

We do not warrant that the operation of the product will be error-free or uninterrupted. Except to the extent set forth in this limited warranty, the product is provided on an "as is" basis, and all implied warranties, including but not limited to any implied warranties of merchantability and fitness for a particular purpose, are limited in duration to the applicable limited warranty period set forth, and no implied warranties will exist or apply after such period. No person or entity is authorized to assume for us any other liability in connection with the sale of this product.

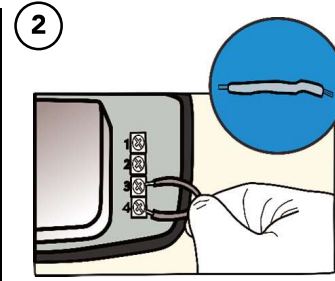
COMPATIBILITY CHECK

1. To verify that your garage door opener is compatible with Nexx Smart Garage Controller, check the opener compatibility list on our website:

getnexx.com/nxg200/support

2. If your opener is not on the list perform the following test. Use the included compatibility test wire and put each end to the same terminals where your wall button wires are terminated to. By doing so, your garage door should activate.

Video tutorial: getnexx.com/nxg200/videos



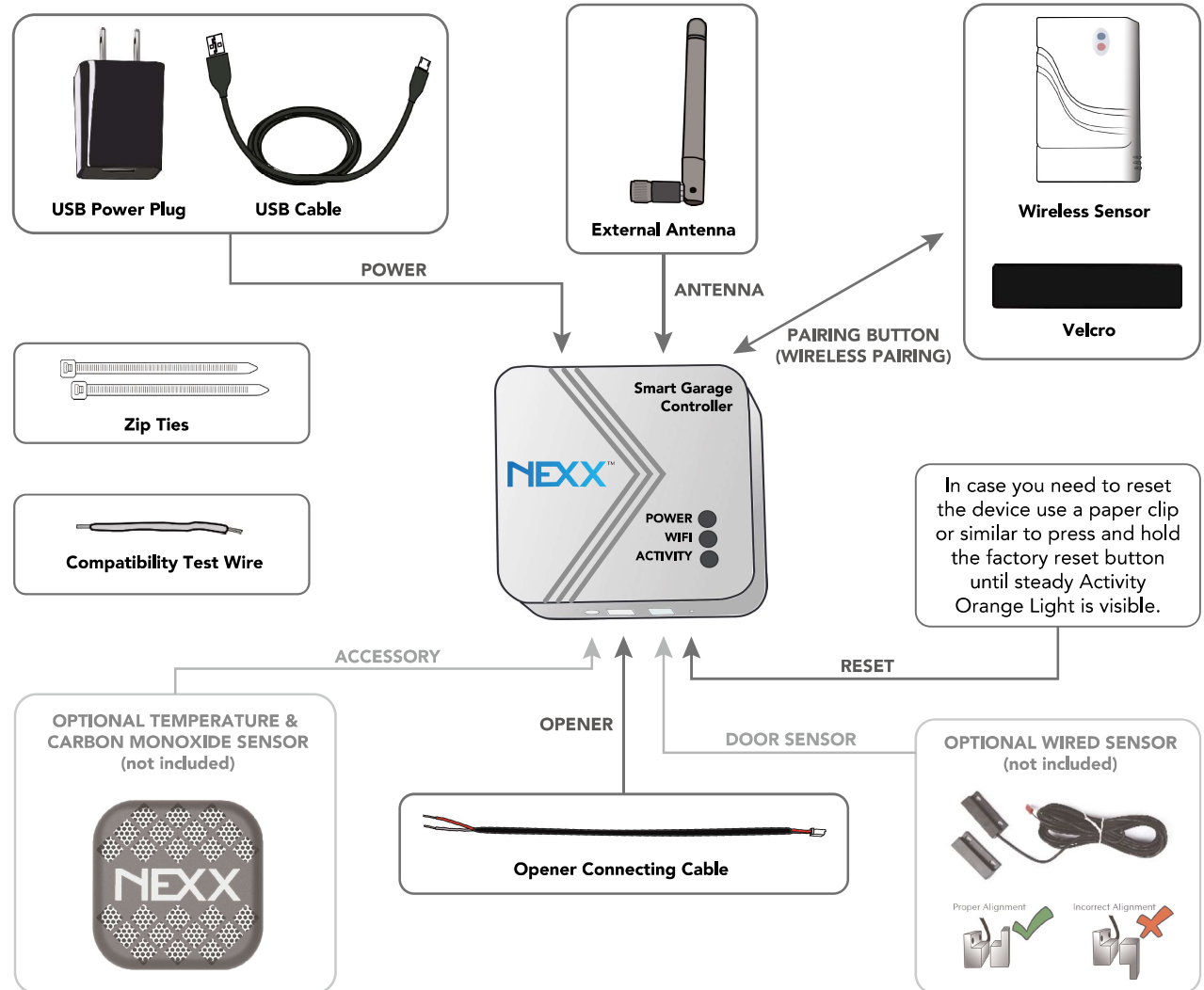
Terminals for wall button

Did your garage door activate?

YES
Continue the installation.

NO
Send email with your garage door model to support@getnexx.com

NEXX SMART GARAGE CONTROLLER NXG-200



1. BEFORE YOU START CHECK LIST

- Compatibility check passed
- 2.4 GHz WiFi Internet Connection
- Mobile Device with enabled Bluetooth
- Garage Door Opener
- Stepladder
- Screwdriver



Video tutorial of the installation process:
getnexx.com/nxg200/videos

If you need help just send an email to
support@getnexx.com

2. INSTALL MOBILE APP

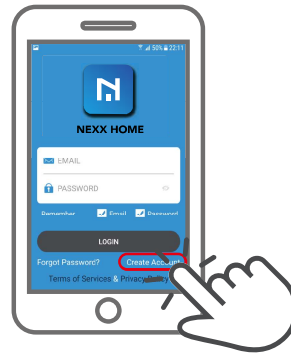
Download and install from
Apple App Store or
Google Play Store:

Nexx Home



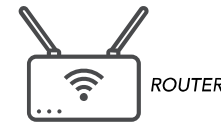
3. CREATE ACCOUNT

Open Nexx Home app and
create an account with Nexx.

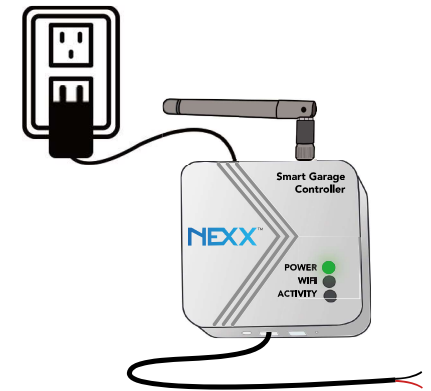


4. STAND CLOSE TO YOUR ROUTER

Make sure your WiFi signal is
strong.



5. ASSEMBLE and CONNECT TO POWER



6. CHECK STATUS OF NXG-200

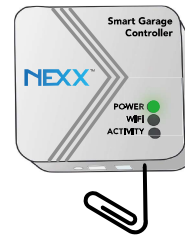
A. Steady Activity Orange Light is ON:

Continue to next step



B. No Activity Orange Light:

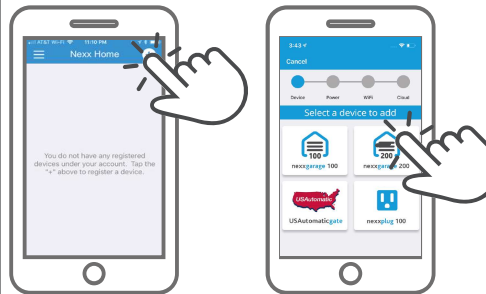
Press and hold the factory reset button
using a paper clip or similar until steady
Activity Orange Light is visible.



7. ADD NXG-200 TO NEXX HOME

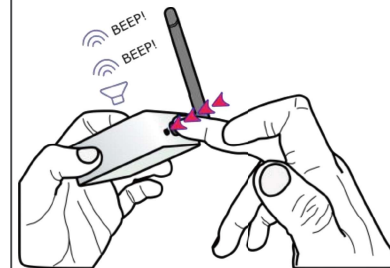
Log in Nexx Home app and tap **+** to add
device.

⇒ Follow the configuration process.



8.1. SENSOR PAIRING

Press the pairing button on the
device.
The device will beep 2 times.



8.2. SENSOR PAIRING

Move wireless sensor horizontally
and vertically.



8.3. SENSOR PAIRING

✓ PAIRED

When pairing is
successful, the
device will beep
3 times.



✗ NOT PAIRED

If pairing has failed, the
device will beep once for
two seconds.
⇒ Retry sensor pairing
from step 8.1.

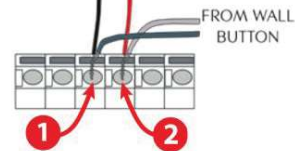


9. CONNECT TO OPENER

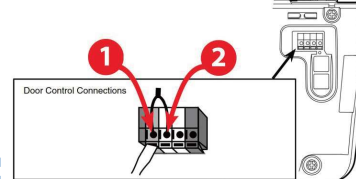
Connect the cable to the
terminals on the back of your
opener, with one wire going
into each of the two terminals.

**It does not matter which wire
is inserted into which terminal.**

If you have a wall button, twist
together the wall button wires to
the Nexx connection wires. Insert
the two combined wires into the
terminals.

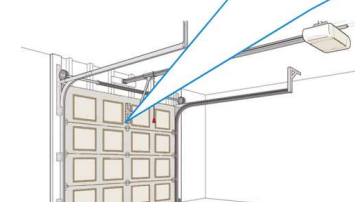
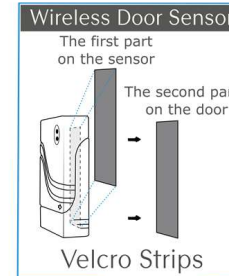


**CONNECT TO SAME TERMINALS
USED BY WALL BUTTON**



10. SENSOR INSTALLATION

Attach the
Wireless Door
Sensor using the
Velcro provided
to the **top
middle** of your
garage door.



CONGRATULATIONS!

You are good to go.

If you have any issues or
questions, please reach us
at

support@getnexx.com

Follow us for promotions,
tips and tricks, and more on:

@getnexx

get.nexx

Nexx
Nexx Support