

Strip Light Connector - STAF Series



The STAF Series connectors are designed to seamlessly connect single color LED strip lights. With an ultra-thin and cover-free design, the connectors not only provide a safer and quicker way to link single color LED strip lights, but also solve the lighting discontinuity issue commonly noticed when using connectors with bulky covers, allowing a more even and continuous light distribution. The connectors are all compatible with our company’s high-density single color 13/32” (10mm) wide LED strips with 112 chips per meter or more (including COB IP20 LED strip lights). The strip-to-strip corner connector provides an additional model that is compatible with 8mm wide LED strip lights. The connectors are suitable for quick installation of LED strips in aluminum channels as well, significantly improving the flexibility and convenience of on-site LED strip installation.

Features

- Cover-free design allows an even and continuous light distribution and helps heat dissipation.
- Suitable for 13/32” (10mm) wide LED strip lights; STAF-S2S-L-8 is compatible with 5/16” (8mm) wide LED strip lights.
- Easy and effective connection for LED strip lights.
- Eco-friendly anti-corrosion treatment of metal contact plates.



Specification

Rated Voltage	0-36VDC
Rated Current	<5A
Color	Clear

Operating Temperature	14°F~113°F
Heat Resistant	221°F
Applicable	10mm

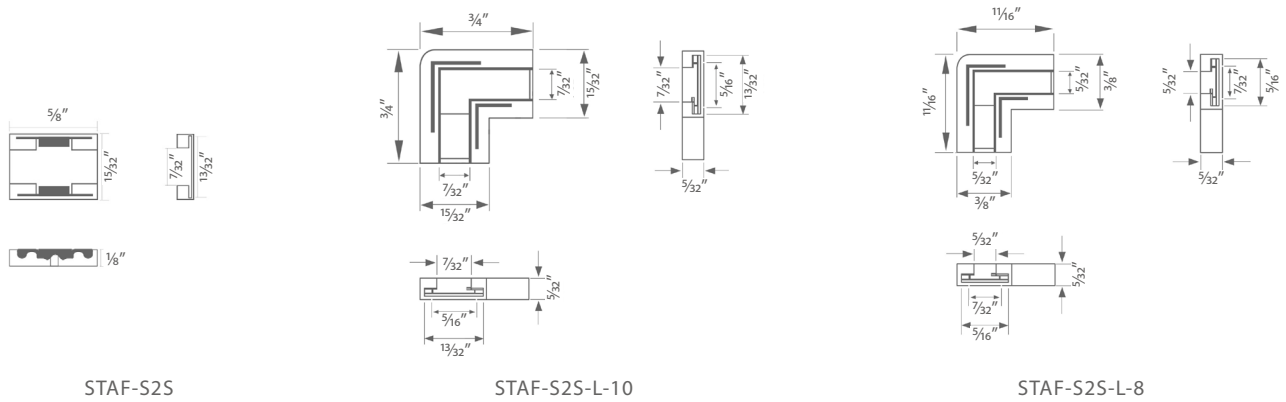
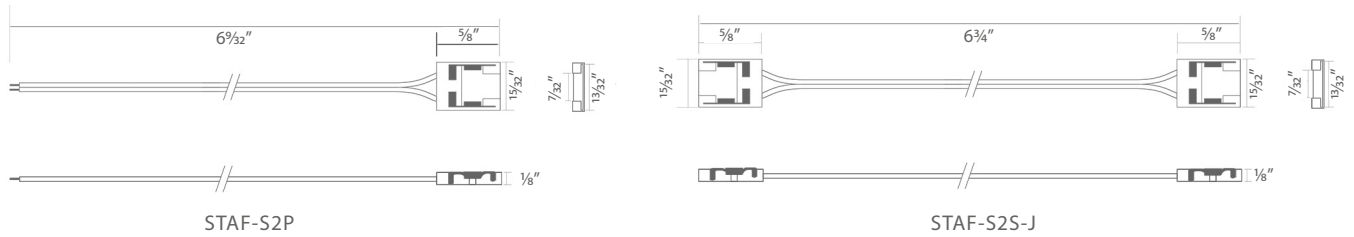
Order Information

Series: **STAF** - Type:

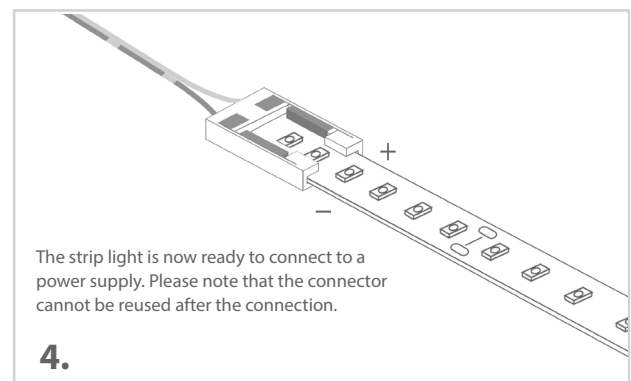
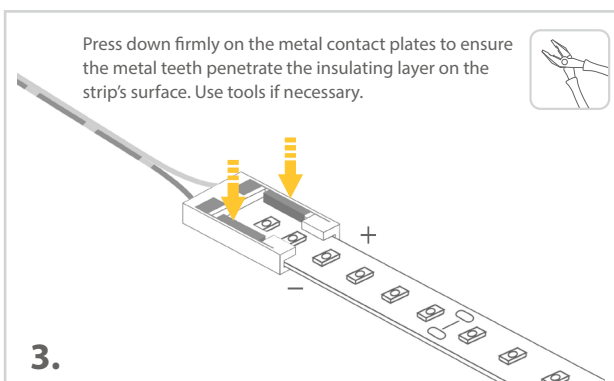
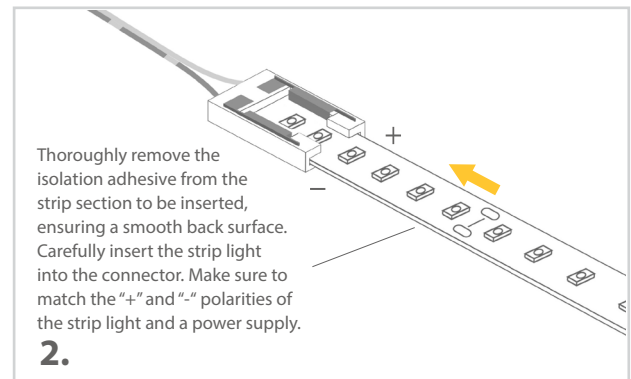
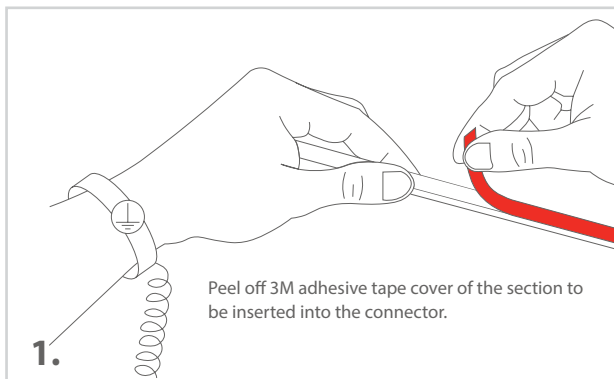
S2P - Strip to Power Connector
S2S-J - Strip to Strip Jumper Connector
S2S - Strip to Strip Connector
S2S-L-10 - Strip to Strip L Shape Connector 10mm
S2S-L-8 - Strip to Strip L Shape Connector 8mm

GL LED US LIGHTING reserves the right to modify this specification without prior notices.

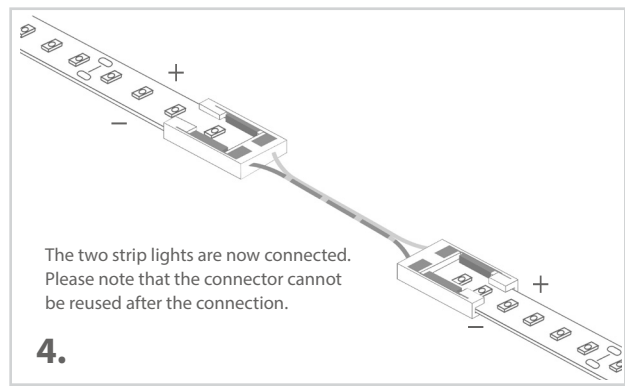
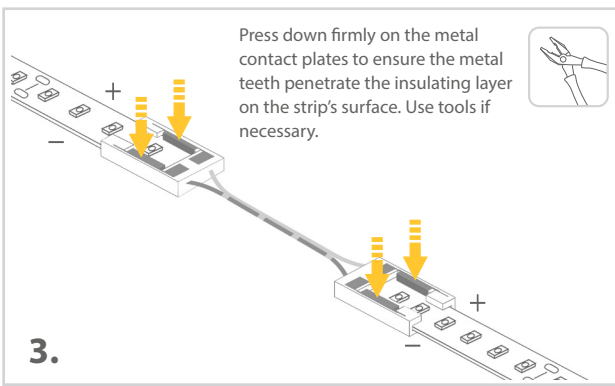
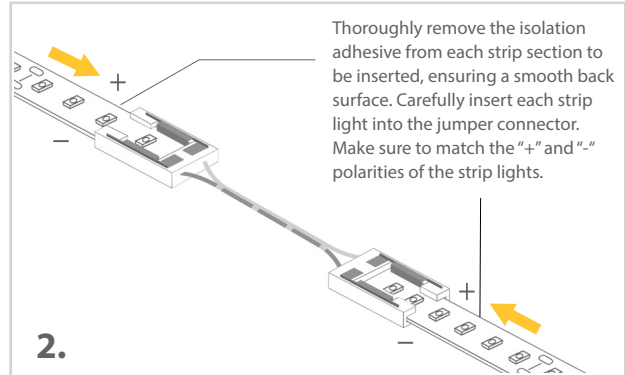
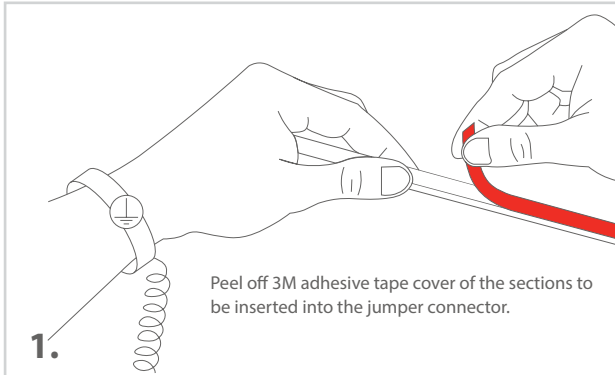
Dimensions



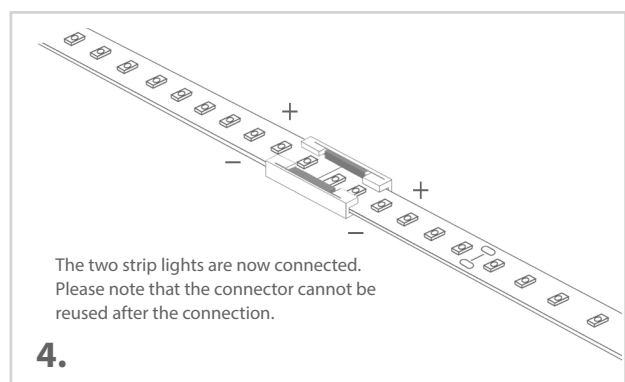
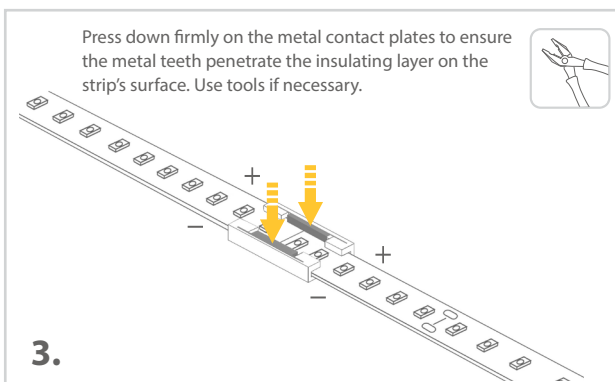
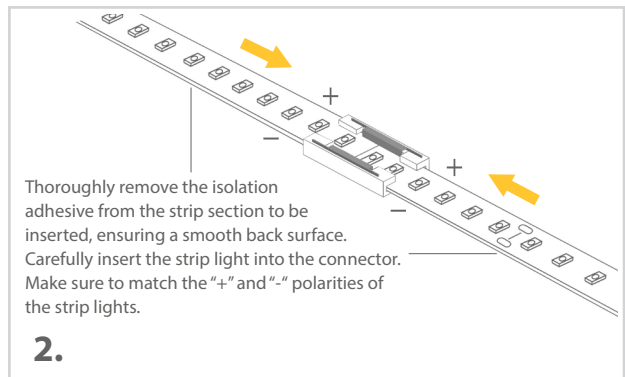
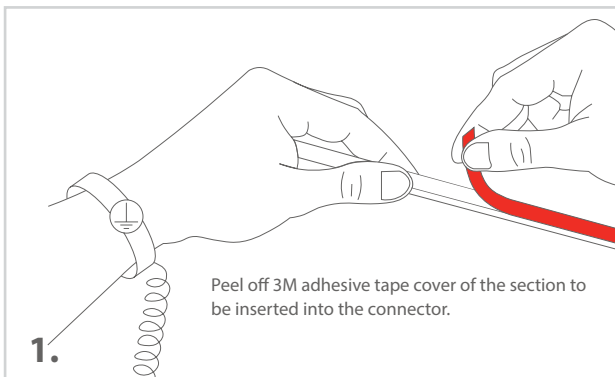
Strip to Power Connector STAF-S2P



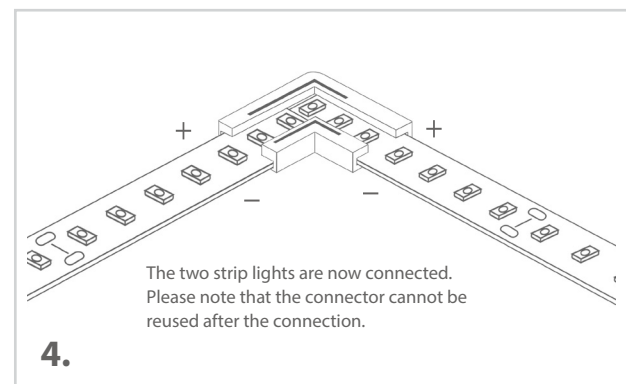
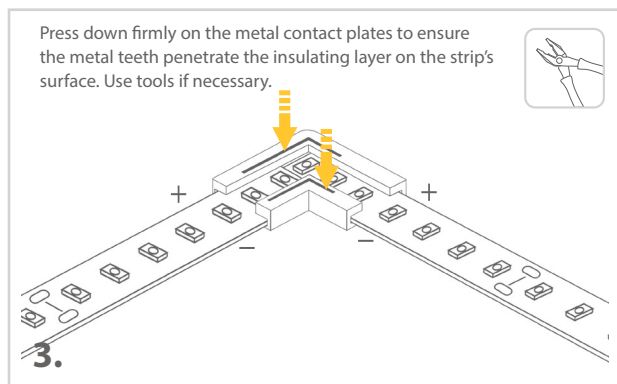
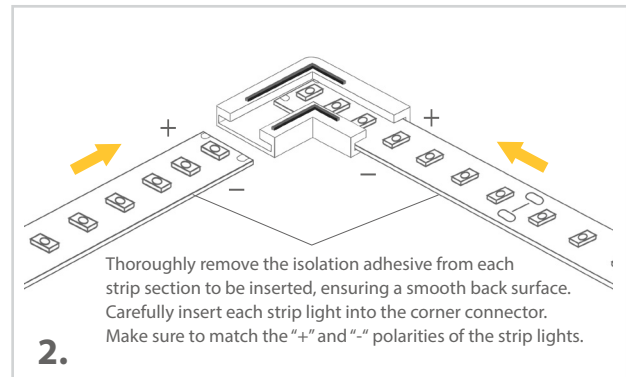
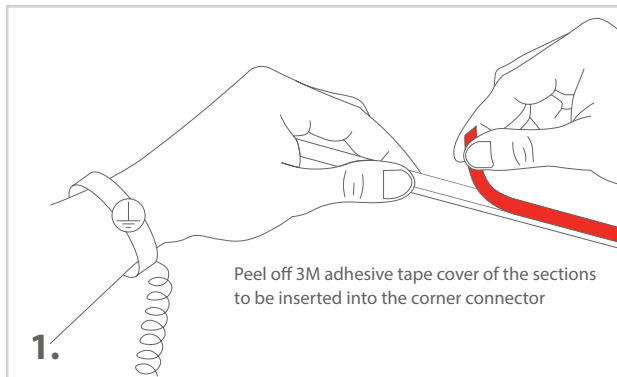
Strip to Strip Jumper Connector STAF-S2S-J



Strip to Strip Connector STAF-S2S



Strip to Strip Corner Connector STAF-S2S-L-10/8



- Note: 1. Storing connectors in high temperature or humid conditions may lead to discoloration of the connectors. Please make sure to keep them in a controlled temperature and humidity environment.
2. The material of the connectors is prone to moisture absorption. Rapid temperature fluctuations may cause color alterations to the connectors, especially when they are in a moist condition. Please make sure to store the connectors in a dry, well-ventilated area away from direct sunlight.