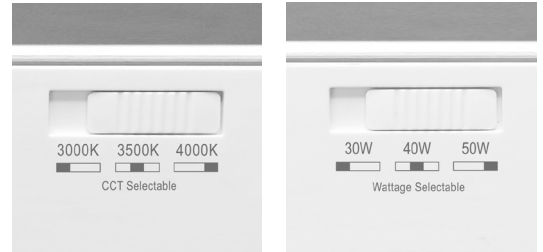


LED Wall Washer Track Light



Color Temperature selectable: 3000K-3500K-4000K
Power selectable: 30W-40W-50W



Asymmetric Optics: 60°x90°



Product Description

LED Wall Washer Track Head is an LED luminaire with optimum light distribution for wall wash applications. Superior coverage and use fewer fixtures for vertical wall wash lighting applications, is an excellent choice for commercial, retail, art gallery and hospitality applications, etc. It delivers up to 6,000 lumens of beautiful, uniform high-quality light in multiple color temperatures and powers in just one fixture. 90° aiming horizontal, 360° vertical rotation allow to light where needed. Available in a white or black finish.

Compatible Track System: single circuit track (H Type)

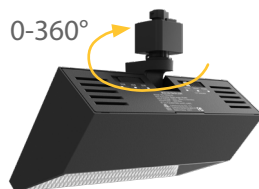
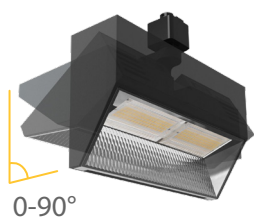


Features

- Patented 3 CCTs & 3 lumens in one design
- Up to 6000lm of 140LM per W system efficacy
- H track system, 120V input
- Flicker free compliant to IEEE 1789
- Arrangement distance a/H=1/3 via asymmetric wall washer.
- Good color consistency: with 3 step SDCM
- Dimmable: Triac/ELV dimming
- Long Lifespan: >50,000hrs(L70B10)
- 5 years limited warranty

Benefits

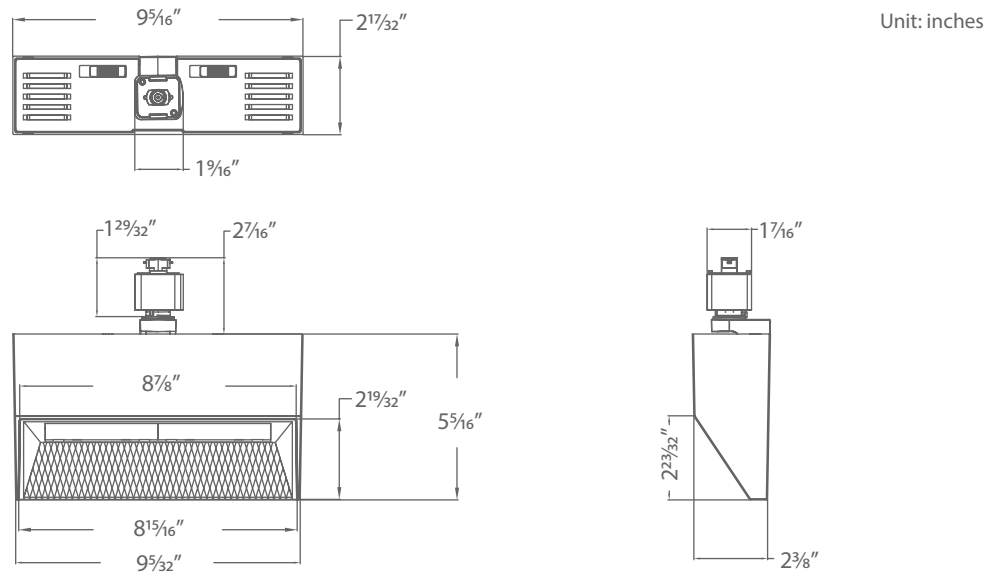
- Superior coverage
- Uniform illumination from top to bottom, free of hot spots or visible striations, discoloration
- Excellent cutoff and glare light control
- Over 70% energy saving



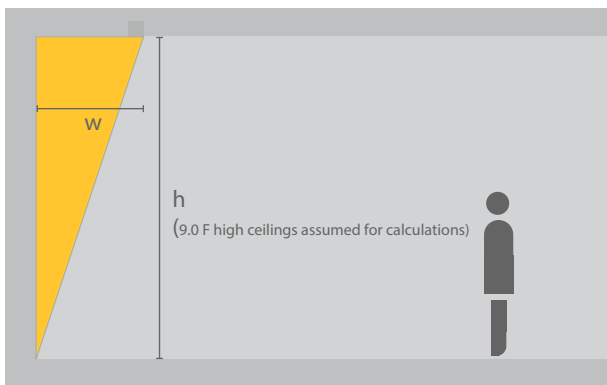
Models

Model	CCT Adjustable	Power (W) - Brightness (LM) Adjustable	CRI	Beam Angle (°)	Dimming	Finish	L x W x H (Inch)
GL-HS-TR078-50-B	3000K/3500K/4000K	30W - 3900LM	82	60x90	Triac/ELV	Black	9.32x2.5x5.3
GL-HS-TR078-50-W		40W - 4800LM				White	
		50W - 6000LM					

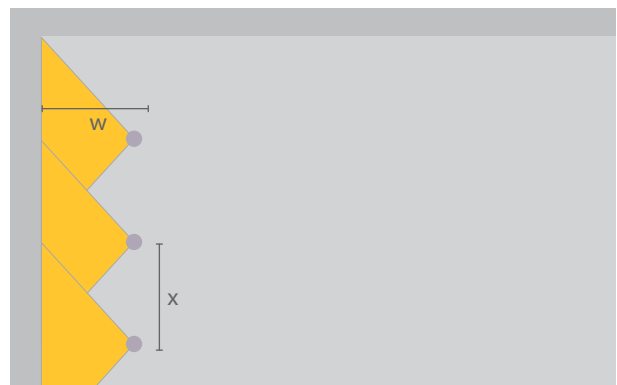
Dimension



Installation Spacing Recommendation



Example:
 $w=3, h=9, w=1/3h$
 If the ceiling is 9 feet high, the light fixtures can be installed 3 feet away from the wall. The distance between the light fixtures and wall should be equal to 1/3 of the wall height to achieve a full wall area light output.



Example:
 $w=3, x=3.9, x \leq 1.30w$
 If light fixtures are 3 feet away from the wall, the space between light fixture should not be bigger than 3.9 feet. So the space between light fixtures should be less than or equal to 1.3 times of the distance between light fixtures and wall to achieve an even light output.

Good optical design can create uniformity, with a good ratio of light across the vertical plane. Maximum coverage of light, without any patchy spots between luminaries.