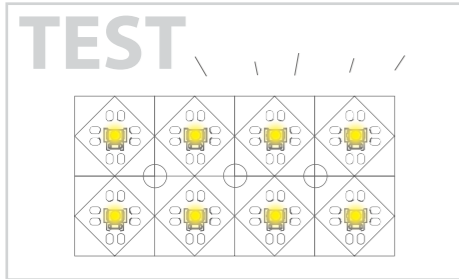


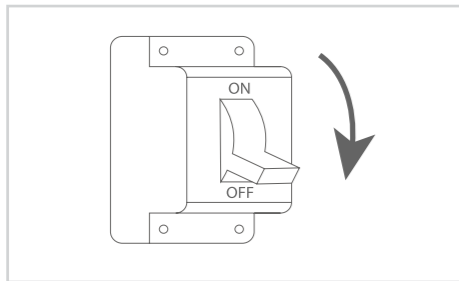
LED Pixels Light Sheet Use Manual

Before Installation

1. When purchasing LED Pixels Light Sheet, please check all parts of the product are in well functional condition.



2. Before installation, always test the connection to ensure that the LED pixels light sheet is operating correctly. If there are any issues with the LED pixels light sheet before installation, please contact our customer services for returning and exchanging.



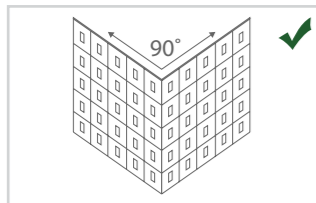
3. Always turn off the power at circuit breaker before any LED pixels light sheet installation.

4. Always make sure to have Antistatic Wrist Strap or Antistatic Gloves prepared for LED pixels light sheet installation.

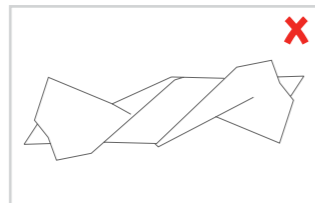


5. Installation and connection of LED pixels light sheet should be performed by a qualified professional, and follow all the safety regulations.

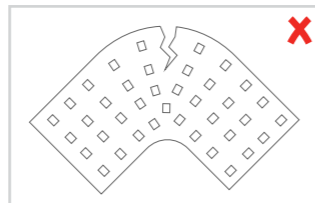
Handle Products with Care



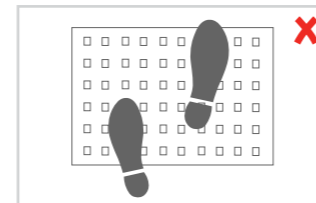
Greater than 90 degree fold only on cut lines.



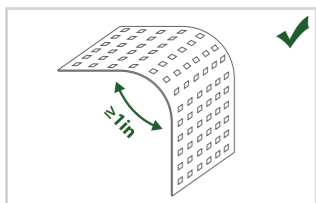
DO NOT twist LED pixels light sheet.



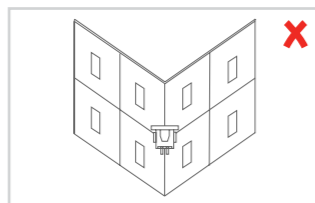
DO NOT bend LED pixels light sheet horizontally.



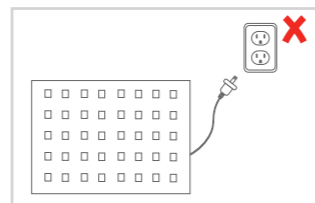
DO NOT step on or put any object on LED pixels sheet.



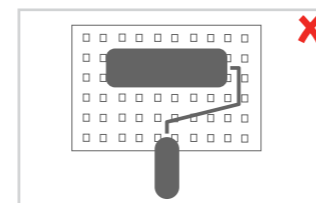
The bending radian must be wider than 1in.



DO NOT fold or bend the line of on board connector.

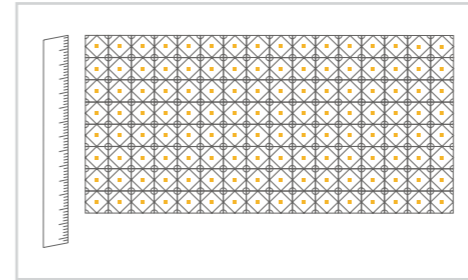


DO NOT plug in to line voltage power directly.

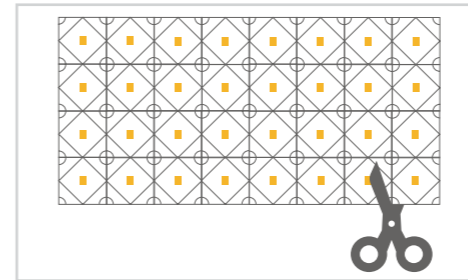


DO NOT paint on any part of LED pixels light sheet.

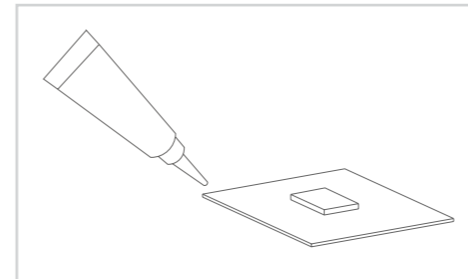
Installation Instructions



1. Before cutting the LED pixels light sheet, always measure and calculate the shape you want and check the splitting lines which show you where to cut on the LED pixels light sheet.



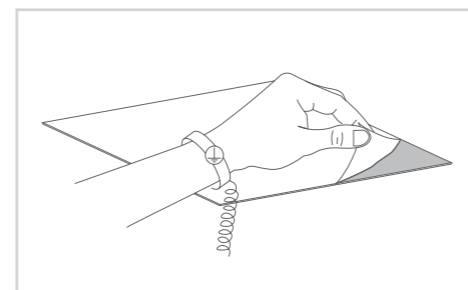
2. When cutting the LED pixels light sheet, one must cut along the splitting lines on the sheet. The electrostatic ring is needed at this step. \*DO NOT cut anywhere outside of the designated splitting lines.



3. All ends of the section must be sealed with silicone sealant or silicone adhesive to prevent short circuits.

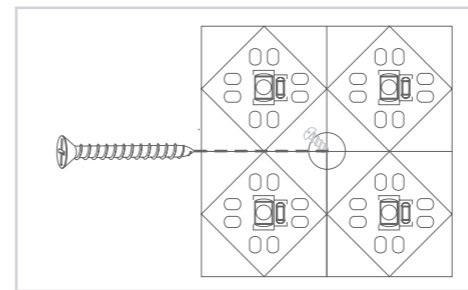
Mounting Methods

\*Before Mounting, always test the connection to make sure the whole lighting system is operating correctly.



Method 1: 3M Tape

Please ensure the installation surface remains clean, smooth and dry, free of sharp objects. When installing the LED pixels light sheet, please wear the electrostatic ring or gloves. There is 3M adhesive tape already on the back side, and users only need to remove the protective film to mount. Always give a pressure to avoid air bubbles while installing. 3M tape performs with heat. Therefore the tape will achieve the max adhesiveness in one hour with the LED strips turned on.



Method 2: Screws

Please ensure the installation surface remains clean and dry, free of sharp objects. When installing the LED pixels light sheet, please wear the electrostatic ring or gloves. You may only screw the places where the screw signs are. \*DO NOT screw anywhere outside of the designated screw holes.

Caution: There should be at least two people working together during the installation.

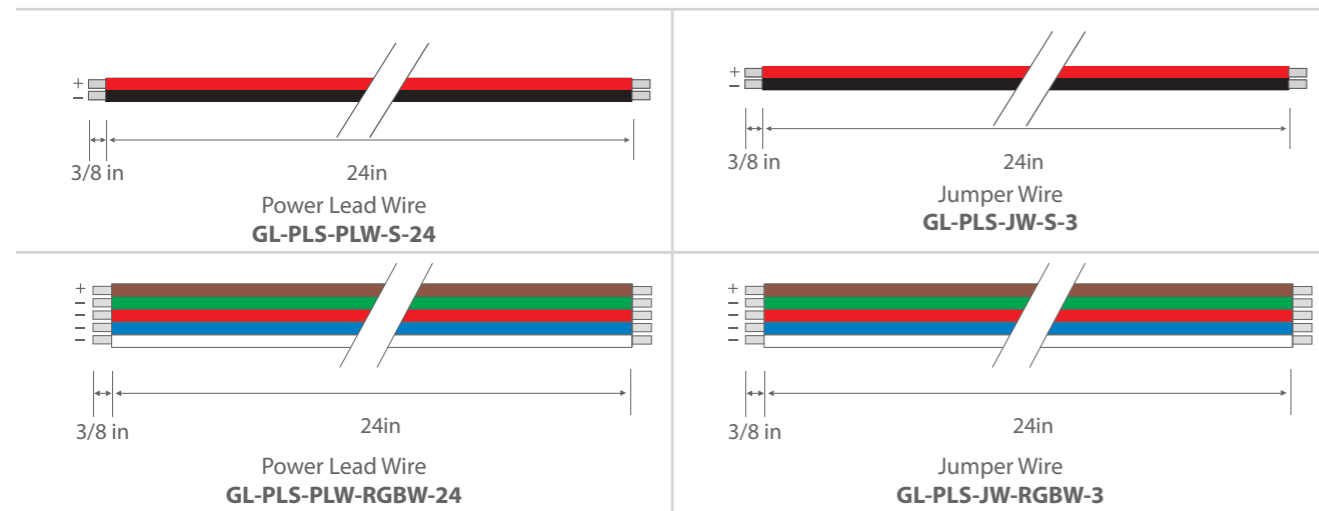
### Connecting Methods

Each LED pixels light sheet comes with a 2ft power lead wire and a 3in jumper wire. Connecting between sheet to power and/or sheet to sheet can be achieved by on-board connector or soldering after the sheet was cut to the desired shape. We also provide customized soldering services, ask your sales representative for more details.

### Connecting with Soldering

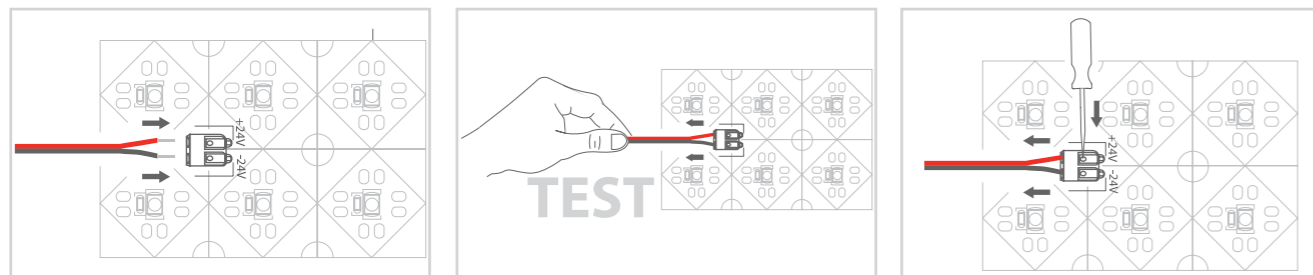
When soldering the low voltage LED lights, the temperature should be no more than 662°F and soldering time should be less than 5 seconds.

### Connecting Accessories



### Connection Instructions

Connecting the LED Pixels light sheet to power lead wire or jumper wire with the on-board connectors. Check your +/- connection everytime before connecting.

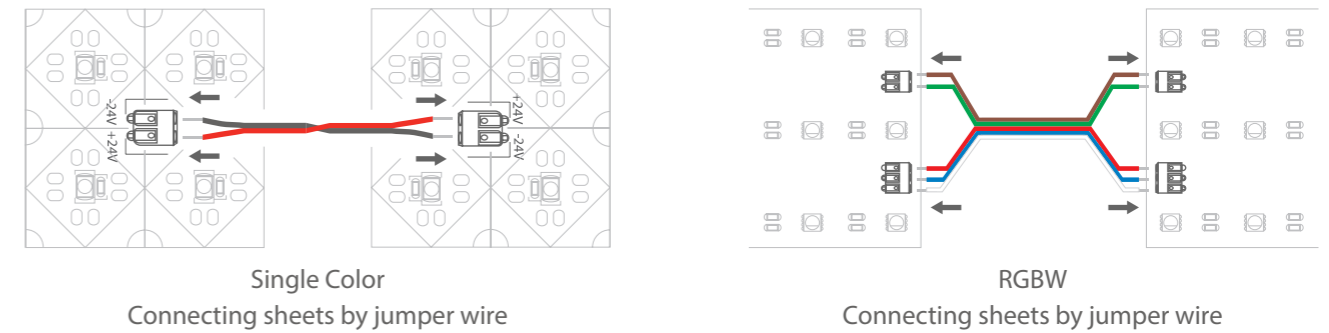


Insert the power lead wire or jumper wire into connector. Make sure to insert it **all the way in** until non of the copper core is visible.

Always test the secured connection by **gently** pulling the wire after connecting the wire. Re-do the connection step if the wires can be pulled out easily.

**Disconnecting:** Use awl to push down the small button on on-board connector. Then pull out the wire.

### Connecting Sheets



### Max Load Chart (No Voltage Drop)

| Model No.                         | Power Consumption | Wire Gauge | Max Current | # of Power Lead | No Voltage Drop |
|-----------------------------------|-------------------|------------|-------------|-----------------|-----------------|
| GL-PLS-288-125-24V-10W-xxxxK      | 10W/sheet         | 20AWG      | 5A          | 1               | 12 sheets Max   |
| GL-PLS-288-125-24V-30W-xxxxK      | 30W/sheet         | 20AWG      | 5A          | 1               | 4 sheets Max    |
| GL-PLS-288-125-24V-40W-RGBW-3000K | 40W/sheet         | 20AWG      | 5A          | 1               | 6 sheets Max    |

\*When there is only one power input cable, 10w/sheet can connect up to 12 sheets, 30w/sheet can connect up to 4 sheets, and 40w/sheet can connect up to 6 sheets. If you add a power input cable, 10w/sheet can connect 24 sheets, 30w/sheet can connect 8 sheets, 40w/sheet can connect 12 sheets, and so on.

### Recommended Display Methods

For a spotless even illumination, we recommend to use a diffuser on top of the LED pixels light sheet. You can also use LED pixels light sheet to backlight any translucent materials.

### Display with Regular Diffuser



For spotless effect, the distance between light sheet and diffuser should be  $\geq 1.18$ in

### Used as Backlight for Marble Panels



The pixel light sheet is the perfect light to illuminate natural stones such as marble, granite, agate, etc. It can be directly attached to the marble to highlight the texture of the marble without dark spots.

\*Measured using a 1.12" thick natural marble panel. It is recommended that each project be tested before use.