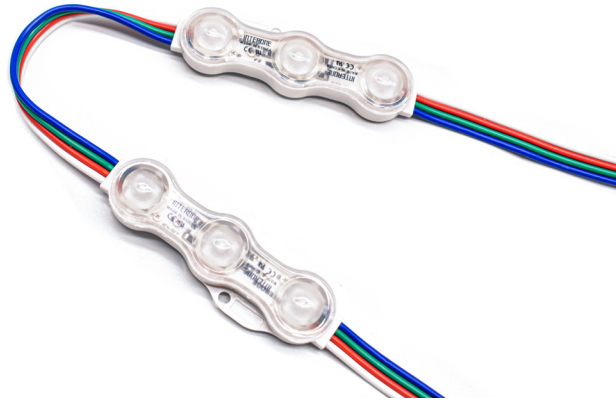


LED Module Light - RGB



Features

- Ensure excellent transmittance and uniform lighting
- Compact size
- RGB-Full color with natural color projection
- Safe Operation with 12 VDC
- Wide viewing angle for even light flux
- Capable of wet exposed applications with durable weather protective molding, IP68
- Easy installation with double sided 3M tape and screw holes for extra security
- 160° wide angle allows the light to spread evenly and eliminates hot spots
- CE, UL, RoHS Approved



Specification

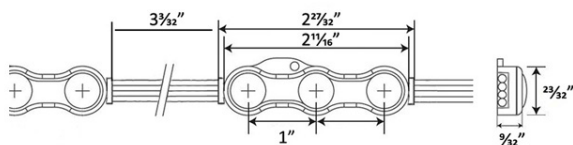
Input Voltage	12VDC
Chip	Samsung
Wire Size	18 AWG, 4 wire
Length	2 modules/ft

Work Temperature	-22°F ~ 158°F
Storage Temperature	-40°F-167°F
Waterproof Rate	IP68
Warranty	2 years

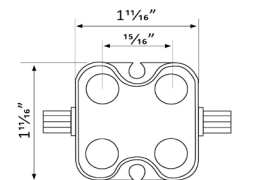
Models

Model No.	Watts/Module	Color Temperature	Lens	LED	Viewing Angle	Qty/Bag
Z3V-5F-F-a6-072-K5	0.72	RGB	Clear	3	160°	100
Z4V-5F-F-a6-144-K2	1.44	RGB	Clear	4	160°	100

Dimensions



Z3V-5F-F-a6-072-K5



Z4V-5F-F-a6-144-K2