



# LED Linear Light

L8456 continuous run - 4ft/8ft

## Description:

L8456 linear light is combination of separated structures, it is convenient to dismantle and maintain because of its replaceable power supply and lighting emitting parts(PCB+LEDs), simple shape and random jointing can be realized. IP40 waterproof, so it is can be widely used in home, school, shopping mall, hotel and other indoor public places, and it is mainly made of aluminum alloy, PC.

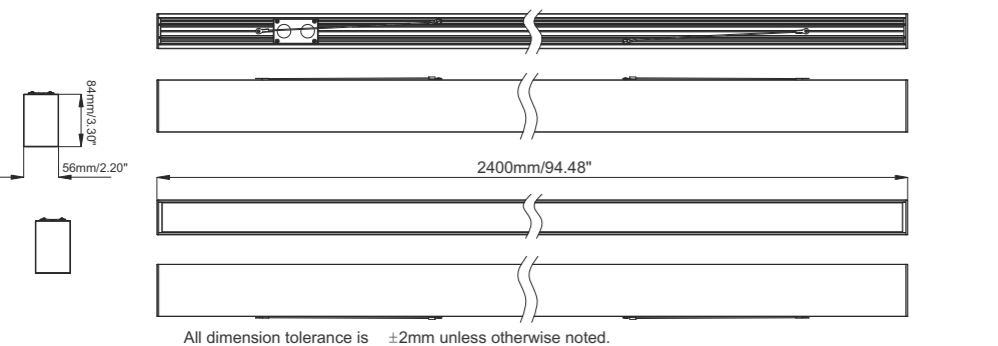
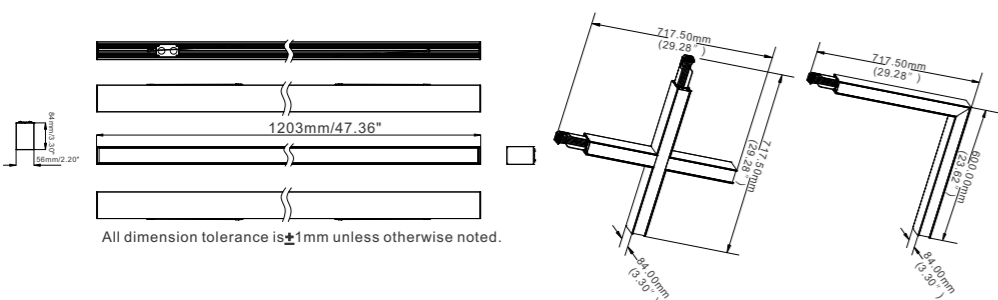
## Applications:

Can be widely used in home, school, shopping mall, hotel and other indoor public places.

## Features:

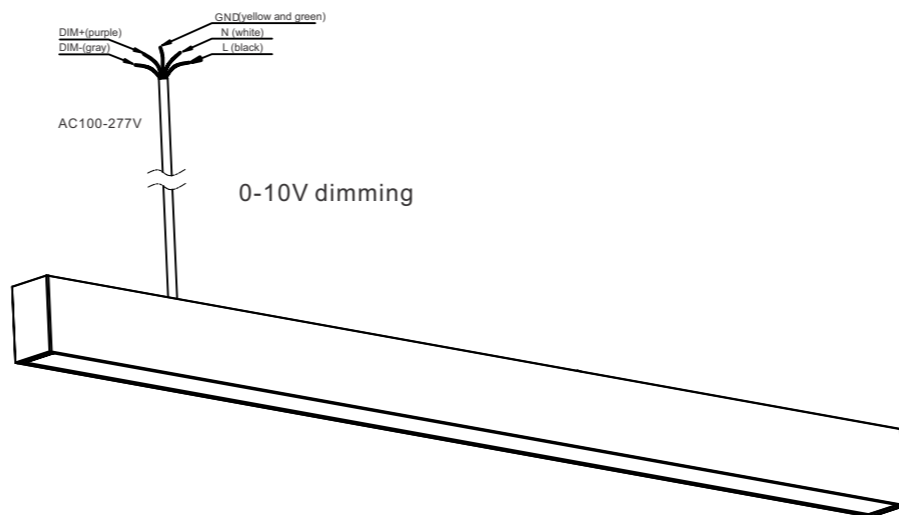
- 1.seamless continuous connection without any gap.
- 2.the lamp with built-in connection accessories, to connect the electronic parts and structure.
- 3.Three colors of lamp body, with black and grey.
- 4.Two installation methods, ceiling and suspendent .
- 5.high lumen lighting efficiency up to 105LM/W.
- 6.Preinstall 5 wire 14AWG copper core;,1500W can be installed continuously in 110V, and 3600W an be installed continuously in 277V.
7. Multiple jointing can realized via "十" "L" shape connecting accessories

## Dimensions (Unit:mm/inch)



# INSTRUCTION MANUAL

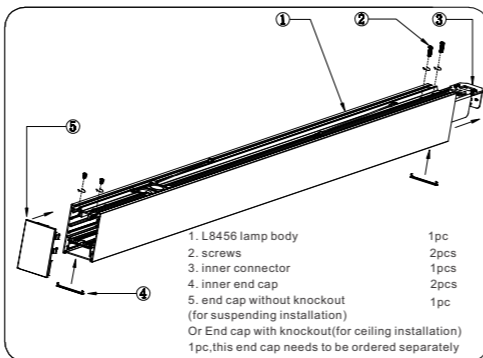
## Electrical Connection



(Remark:The max current consumption of our driver to 0-10V dimmer is 2mA each one)

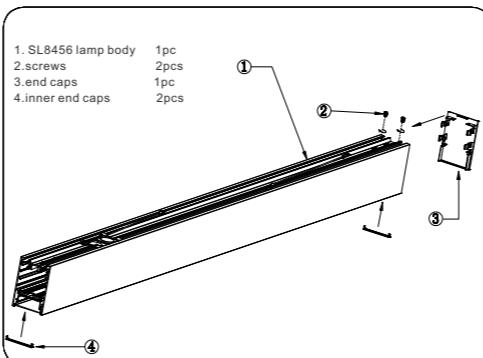
## Installation instruction

### How to make the first run?

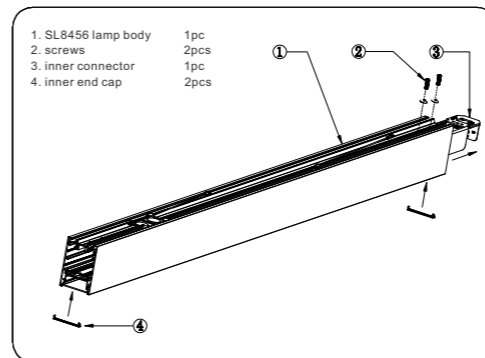


Firstly, loose the 2 screws at the lamp end, and pull out the inner connector from the lamp body, then fix the inner connector by 2 screws again. After finishing the wiring connection(see the steps on the continuous connection),fix the end cap by screws and insert the inner end caps at both sides.

### How to make the last run?



### How to make the middle run?

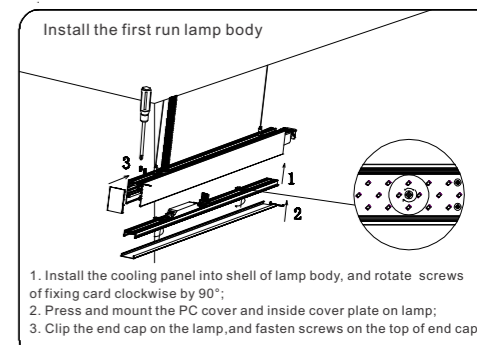
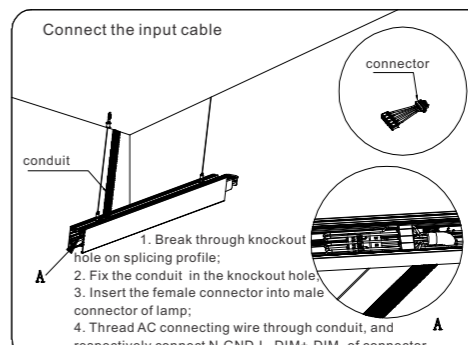
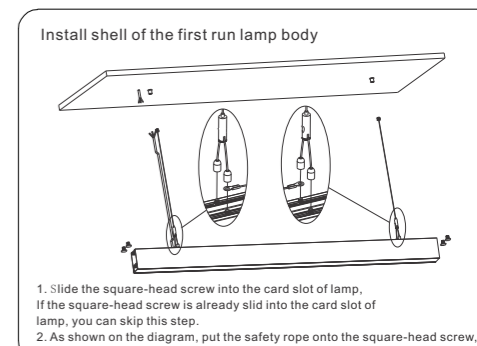
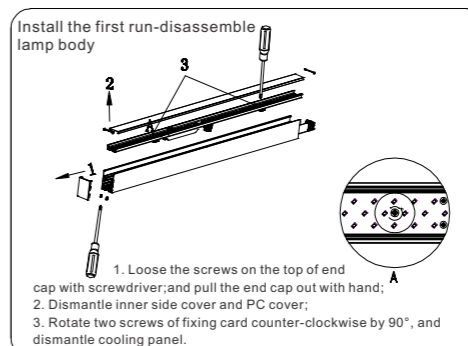
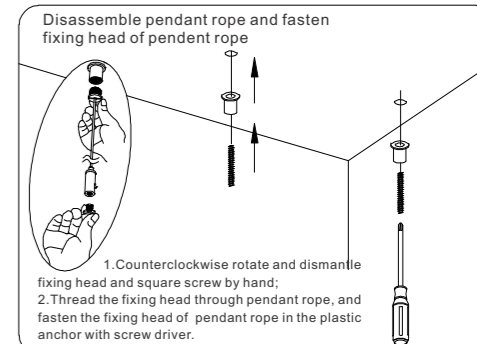
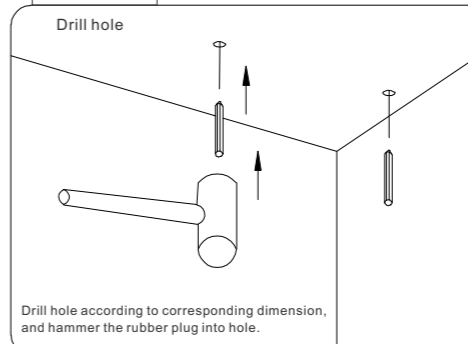
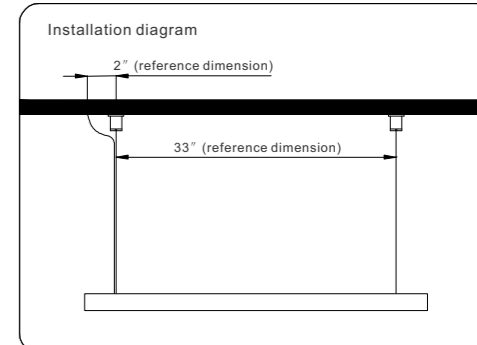
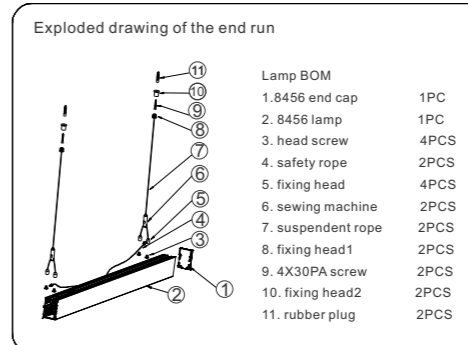
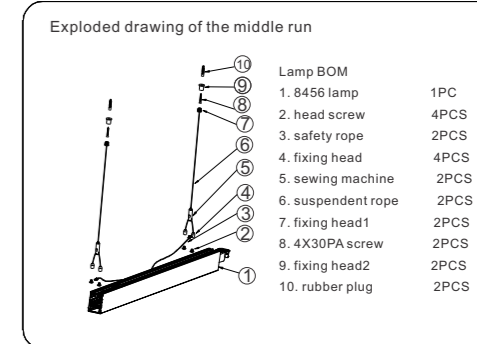
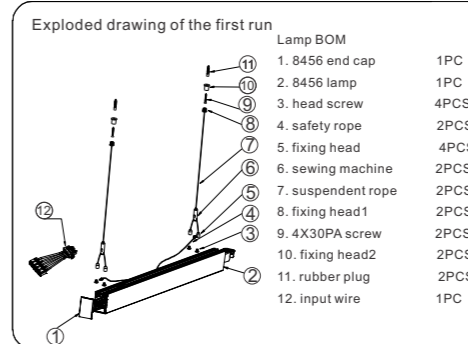


loose the 2 screws at the lamp end, and pull out the inner connector from the lamp body, then fix the inner connector by 2 screws again, insert the inner end caps at both sides.

Just fix the end cap at the last end by screws, and insert the two inner end caps.

# INSTRUCTION MANUAL

## Suspension Installation Instructions





# INSTRUCTION MANUAL

**Install lamp body of the middle run**

1. Install ceiling lamp into profile slot of the middle run lamp;
2. Insert female connector of the first middle run into the male connector of the first run; and insert female connector of the next middle run into male connector of previous middle run;
3. Fasten the screws on joining with screwdriver;
4. Splicing quantity  
When input voltage is 110V, N\*P <1500W  
When input voltage is 277V, N\*P <3600W  
N is total run, and P is power of single lamp

**Install lamp body of the end run**

1. Snap the clamp of suspender rope into slot of lamp profile;
2. Insert female connector of end run into male connector of previous run;
3. Fasten the screws on joining with screwdriver.

Installation drawing for "+" shape lamp

Installation drawing for "L" shape lamp

## Ceiling Installation Instructions of L8456

**Exploded drawing of the first run**

BOM

- 1. end cap of inlet wire 1pc
- 2. 8456 lamp 1pc
- 3. 4\*25PA screw 2pcs
- 4. clamp 2pcs
- 5. rubber plug 2pcs
- 6. input wire 1pc

**Exploded drawing of the middle run**

BOM

- 1. 8456 lamp 1pc
- 2. 4\*25PA screw 2pcs
- 3. clamp 2pcs
- 4. rubber plug 2pcs

**Exploded drawing of end run**

BOM

- 1. 8456 end cap 1pc
- 2. 8456 lamp 1pc
- 3. 4\*25PA screw 2pcs
- 4. clamp 2pcs
- 5. rubber plug 2pcs

**Installation diagram**

33" (reference dimension)

**Drill hole**

Drill hole according to corresponding dimension, and hammer the rubber plug into hole

**Installation of the first run-disassemble lamp body**

1. Unscrew the screws on the side of end cap with screwdriver; pull the end cap out by hand;
2. Dismantle inner side cover and PC cover;
3. Rotate two screws of fixing card counter-clockwise by 90°, and dismantle cooling panel.

# INSTRUCTION MANUAL

**Connect the input cable**

1. Break through knockout hole on splicing profile;
2. Fix the conduit in the knockout hole;
3. Insert the female connector into male connector of lamp;
4. Thread AC connecting wire through conduit, and respectively connect N,GND,L, DIM+, DIM- of connector. nsion, and hammer the rubber plug into hole

**Install the first run lamp body**

1. Install the cooling panel into shell of lamp body, and rotate screws of fixing card clockwise by 90° to fasten the cooling panel into the lamp;
2. Press and mount the PC cover and inside cover plate on lamp;
3. Clip the end cap on the lamp, and fasten screws on the top of end cap.

**Install the clamp of the first run lamp body**

Thread the screw through fixing holes of safety rope and clamp, and fasten the screw with rubber plug in the ceiling

**Install the first run lamp body**

According to the figure, install the clamp on one side, then rotate and press mounting to another side of the clamp;

**Install lamp body of the middle run**

1. Install ceiling lamp into profile slot of the middle run lamp;
2. Insert female connector of the first middle run into the male connector of the first run; and insert female connector of the next middle run into male connector of previous middle run.
3. Splicing quantity  
When input voltage is 110V, N\*P <800W  
When input voltage is 277V, N\*P <2270W  
N is total run, and P is power of single lamp

**Install lamp body of the end run**

1. Snap the clamp of suspender rope into slot of lamp profile;
2. Insert female connector of end run into male connector of previous run.

## Product packaging information:

1.2m lamp:	2.4m lamp:
<ul style="list-style-type: none"> <li>● net weight/pc:3.24kg</li> <li>● gross weight/CTN:24.8kg</li> <li>● inner size: 1274*130*106mm</li> <li>● carton size: 1288*404*230mm</li> <li>● 1pc/inner box,6 inner boxes/ carton</li> </ul>	<ul style="list-style-type: none"> <li>● net weight/pc:6.5kg</li> <li>● gross weight/CTN:33kg</li> <li>● inner size: 2448*133*106mm</li> <li>● carton size: 2462*413*230mm</li> <li>● 1pc/inner box,4 inner boxes/ carton</li> </ul>
"L" lamp	"+" lamp:
<ul style="list-style-type: none"> <li>● net weight/pc:3.294kg</li> <li>● gross weight/CTN:16.631kg</li> <li>● inner size: 735*105*683mm</li> <li>● carton size: 750*225*701mm</li> <li>● 2pcs/inner box,2 inner boxes/ carton</li> </ul>	<ul style="list-style-type: none"> <li>● net weight/pc:3.667kg</li> <li>● gross weight/CTN:9.818kg</li> <li>● inner size: 632*105*566mm</li> <li>● carton size: 647*225*584mm</li> <li>● 1pc/inner box,2 inner boxes/ carton</li> </ul>

# INSTRUCTION MANUAL

## Notice

1. Please read the specification first, to make sure the service environment matches the condition in the specification before using.
2. Please confirm the input voltage, frequency before using.
3. The lamp must be installed by professional personnel
4. If there is any damage on the power line or the shell of the product, it should be taken as defective product and do not use it.;
5. Dangerous high voltage, Non-professionals are not allowed to maintain the products.
6. If the exterior flexible cable or wire is damaged, it must be exchanged by the supplier, its agent or other similar qualified personnel to avoid dangers.