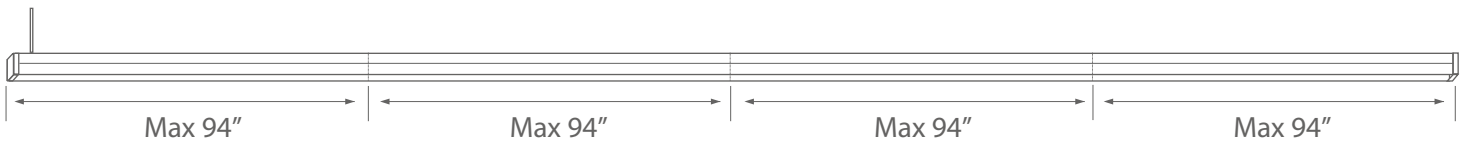
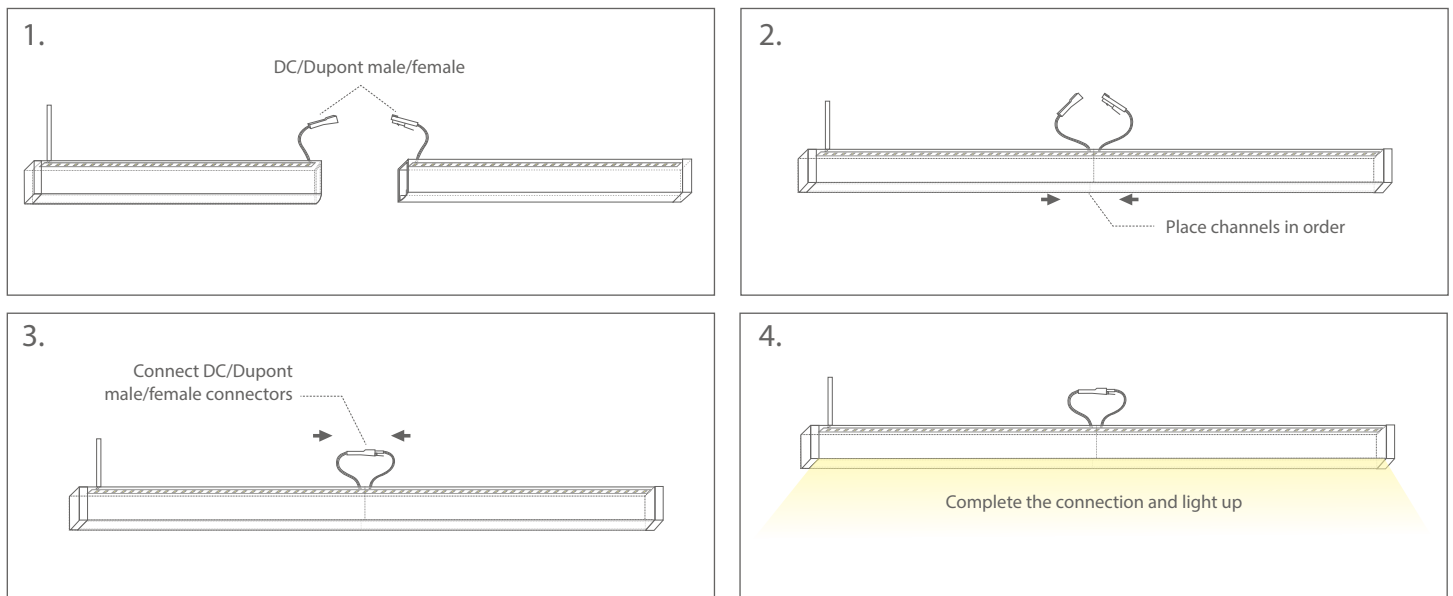


Instructions for connecting and installing extended undercabinet light fixtures



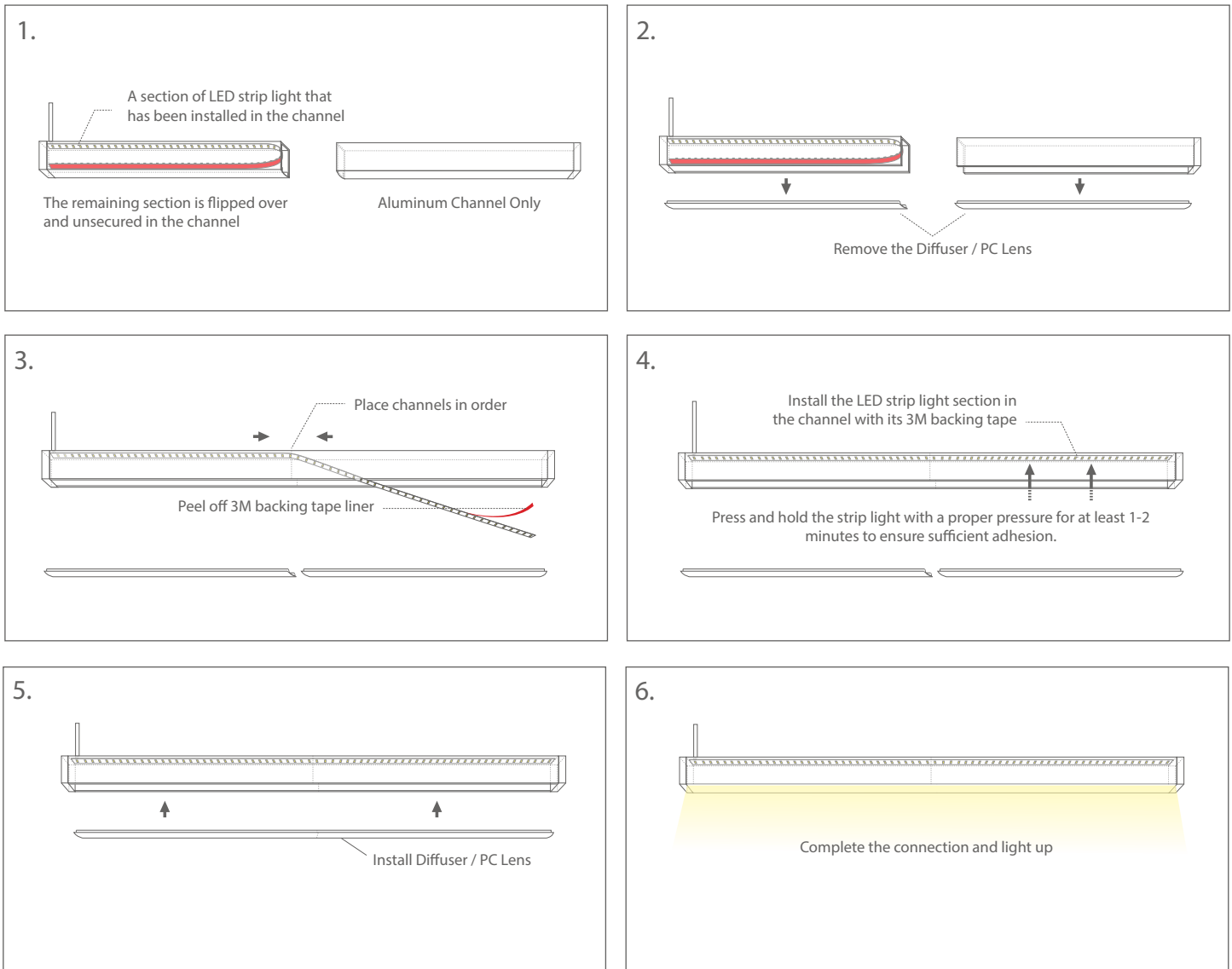
There are two approaches to handle extended (more than 94”), customized undercabinet light fixtures.

1. Fixtures with DC/Dupont male/female connectors



This approach simplifies installation and protects LED strip lights from potential damage. On the other hand, extra efforts may be needed to avoid a less tidy appearance with visible connectors.

2. LED strip light partially secured in channels



This approach creates a tidy and sleek appearance for the straight fixture, eliminating any unsightly hanging wires. On the other hand, extra caution may be taken to handle the unsecured section of strip light during installation to avoid any potential damage.